

## Product datasheet for **RC217965**

### ZNF629 (NM\_001080417) Human Tagged ORF Clone

#### Product data:

Product Type:	Expression Plasmids
Product Name:	ZNF629 (NM_001080417) Human Tagged ORF Clone
Tag:	Myc-DDK
Symbol:	ZNF629
Synonyms:	ZNF; ZNF65
Mammalian Cell Selection:	Neomycin
Vector:	pCMV6-Entry (PS100001)
E. coli Selection:	Kanamycin (25 ug/mL)



[View online »](#)

ORF Nucleotide  
Sequence:

>RC217965 representing NM\_001080417  
Red=Cloning site Blue=ORF Green=Tags(s)

TTTTGTAATACGACTCACTATAGGGCGGCCGGGAATTCGTCGACTGGATCCGGTACCGAGGAGATCTGCC  
GCCCGCATCGCC

ATGGAGCCCGAGACTGCGCTGTGGGGCCGGATCTGCAGGGTCCGGAACAGAGCCCCAACGATGCTCACA  
GAGGTGCCGAGAGTGAAAACGAAGAGGAGAGCCCTCGGCAGGAAAGTTCTGGGGAGGAGATCATCATGGG  
AGACCCGGCTCAGAGTCCAGAATCCAAGGACTCAACAGAGATGTCCTTGAGAGATCCTCCCAGGACCCC  
TCTGTCCCCCAGAACCCCCAACCCCACTGGGTCACTCCAATCCCTTGACCACCAGATCCCCCTGGACC  
CCCCAGCCCCGGAGGTAGTCCCTACCCATCTGACTGGACCAAGGCTGCGAGGCCAGCTGGCAGTGGGG  
CGCTCTCACCACATGGAACAGCCCCCAGTCGTCCCGCAACGAGCCAGCCTGCGGGAGCTGGTGCAG  
GGCCGCCGGGGGGCGGAGAAGCCCTACATCTGCAACGAGTGCGGCAAGAGCTTCAGCCAGTGGTCCA  
AGCTGCTCGGCCACCAGCGCATCCACACGGGAGAGCGGCCAACACCTGCTCCGAGTGCGGCAAGAGCTT  
CACGCAGAGCTCGCACCTGGTGCAGCACCAGCGCACGCACACCGGCGAGAAGCCCTACAAGTGCCCCGAC  
TGGCGGAAGTGCTCAGCTGGAGCTCCAACCTGGTGCAGCACCAGCGCACGCACACGGGAGAGAAGCCCT  
ACAAGTGACGGAGTGCAGAAAAGCCTTACCCAGAGCACAACCTCATCAAGCACCAGCGATCCCACAC  
CGGCGAGAAGCCCTACAAGTGCCGCGAGTGCAGCCGGGCTTTCTACCGCAGCTCGGACCTCATCCAGCAC  
CAGGCCACCCACAGGGCAGAAAACCCCTACAAGTGCCCGAGTGCGGGAAGCGCTTCGGCCAGAACCACA  
ACCTCCTCAAGCACCAGAAGATCCACGCGGGCGAGAAGCCATACCGCTGCACCGAGTGCGGGAAGAGCTT  
CATCCAGAGCTCGGAGCTGACCCAGCACCAGCGCACGCACACAGGCGAGAAGCCCTACGAGTGCCTAGAG  
TGCGGCAAGAGCTTCGGCCACAGCTCCACCTCATCAAGCACCAGCGGACTCACCTGCGCGAGGACCCGT  
TCAAGTGCCAGTGTGCGGAAGACCTTACCCCTGAGCGCCACGTTGCTGCGGCACACGCGCACAC  
GGCGAGCGGCCCTACAAGTGCCAGAGTGCGGCAAGAGCTTCAGCGTCAGCTCCAACCTCATCAACCAC  
CAGCGCATCCACCGGGCGAGCGGCCCTACATCTGCGCCGACTGCGGCAAGAGCTTCATCATGAGCTCCA  
CCCTTATCCGCCACCAGCGCATCCACACCGGTGAGAAGCCCTACAAGTGTTCGACTGCGGCAAGAGCTT  
CATCCGAGCTCCACCTTATCCAGCACCGCCGACGCACACCGGCGAGAAGCCCTACAAGTGCCCCGAG  
TGCGGCAAGAGCTTCAGCCAGAGCTCCAACCTTATTACCCAGTCCGCACGCACATGGACGAGAACCTGT  
TCGTGTGCTCCGACTGCGGGAAGGCCTTCTGGAAGCCACGAGCTGGAGCAGCACCAGGATGATCCATGA  
GAGGGGAAGACCCAGCGGTAGGGCCAGGGGACAGCCTGCTGGGGCTCGGGGACCCCTCCCTGCTG  
ACCCCGCCGCGGAGCCAAGCCGACAAGTGTCTCGTGTGCGGAAAGGGCTTCAACGACGAGGGCATCT  
TCATGCAACATCAGAGGATCCACATCGGAGAAAACCCCTACAAAATGCAGACGGCCTCATCGCACACGC  
AGCCCCAAACCTCCTCAGTTACGATCCCCAAGGCTCCCTTTAGAGGGAATTCCTACCCGGGGTGC  
GAGGGCAGAGCGGAGGCCCCCGGACAGCCCTTAAAGCCGCGGAGGGTCAAGGAGGCTTCAGCCAGAGGC  
GGGGGCTGCTGTCTCCAAGACCTACATCTGCTCCCACTGCGGAGAGAGCTTCTGGATCGCTCTGTGCT  
CCTCCAGCATCAGCTACCCACGGCAACGAAAAGCCCTTCTCTTTCTGATTATAGAATTGGCCTAGGG  
GAAGGCGCAGGGCCAGCCCTTCTTAAGTGGGAAGCCCTTAAATGCCCTGAATGCAAAACAAAGCTTTG  
GCCTCAGCTCTGAGCTGCTGTGACCAGAAAGTCCATGCAGGCGGGAAGAGCTCCAGAAAGATCCAGA  
GCTGGGAAGAGCTTTCGTCCTCCTGGAGCATCTCAGGAGCCCTCGGGGCGAGCCCTACCGCTGC  
TCAGATTGCAGGGCTCCTTCTCGACCGCGTGGCCCTACCCGCGACCAAGAAAACCCACACCCAGGAAA  
AACCCCCAATCCGAGGACCCCTCCAGAGGAGTACCCTGTCCACAGATCAGGAAGGTGAGGGCGA  
GACCCCTACCCACAGAGAGCAGCAGCCTAGGGGAAGGGCAAAACCCAAAACCCCTAGTGAAGAAAAG  
CCCTATCTGTGCCCGAGTGTGGAGCCGGCTTACAGAAGTCGCAGCCCTCCTGCTCCATAGGAGCTGCC  
ACCCAGGTGTCTCCCTG

ACGCGTACGCGGCCGCTCGAGCAGAACTCATCTCAGAAGAGGATCTGGCAGCAATGATATCCTGGATT  
ACAAGGATGACGACGATAAGGTTTAA

**Protein Sequence:** >RC217965 representing NM\_001080417  
 Red=Cloning site Green=Tags(s)

MEPETALWGPLDQGPEQSPNDAHRGAESENEEESPRQESSGEEIIMGDPAQSPESKSTEMSLERSSQDP  
 SVPQNPPPTPLGHSNPLDHQIPLDPPAPEVVPTPSDWTKACEASWQWGALTTWNSPPVVPANEPSLRELVQ  
 GRPAGAEEKPYICNECGKSFQWSKLLRHQRIHTGERPNTCSECGKSFQSSHLVQHQRTHTGEKPYKCPD  
 CGKCFSWSSNLVQHQRTHTGEKPYKCTECEKAFQSTNLIKHQRSHTGEKPYKCGECRRAFYRSSDLIQH  
 QATHTGEKPYKPECGKRFQNHLLKHQKIHAGEKPYRCTEKGKSFQSSSELTQHQRTHTGEKPYECLE  
 CGKSFHGSSTLIKHQRTHLREDPFKCPVCGKFTFLSATLLRHQRTHTGERPYKPECGKSFVSSNLIH  
 QRIRGERPYICADCGKSFIMSSTLIRHQRIHTGEKPYKSCDCGKSFIRSSHLIQRRTHTGEKPYKPE  
 CGKSFQSSNLIHVRTHMDENLFVCSDCGKAFLEAHELEQHRVIHERGKTPARRAQGDSLLGLGDPSSL  
 TPPPAGAKPHKCLVCGKGFNDEGIFMQHQRIHIGENPYKNADGLIAHAAPKPPQLRSPRLPFRGNSYPGAA  
 EGRAEAPGQPLKPPGEGEGFSQRRGLLSKTYICSHCGESFLDRSVLLQHLTHGNEKPFLLPDYRIGLG  
 EGAGSPFLSGKPFKCECKQSFGLSSELLLHQKVHAGGKSSQKSPELGKSSVLLLEHLSPLGARPYRC  
 SDCRASFLDRVALTRHQETHTQEKPPNPPPEAVTLSTDQEGEGETPTPTESSHGEQNPKTLVEEK  
 PYLCPECGAGFTEVAALLLHRSCHPGVSL

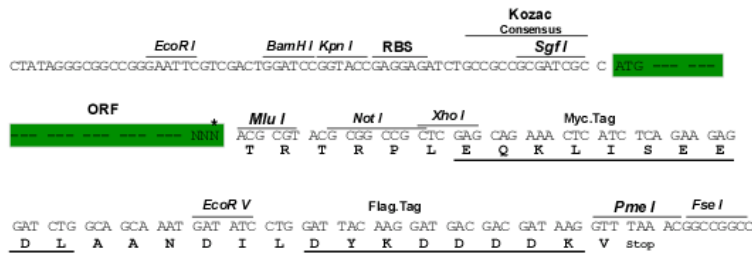
TRTRPLEQKLISEEDLAANDILDYKDDDDKV

**Chromatograms:** [https://cdn.origene.com/chromatograms/mk8016\\_e07.zip](https://cdn.origene.com/chromatograms/mk8016_e07.zip)

**Restriction Sites:** SgfI-MluI

**Cloning Scheme:**

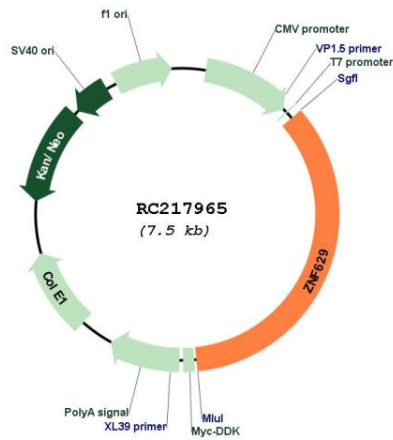
Cloning sites used for ORF Shuttling:



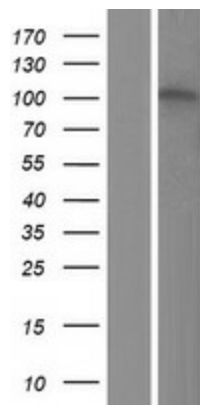
\* The last codon before the Stop codon of the ORF

<b>ACCN:</b>	NM_001080417
<b>ORF Size:</b>	2607 bp
<b>OTI Disclaimer:</b>	The molecular sequence of this clone aligns with the gene accession number as a point of reference only. However, individual transcript sequences of the same gene can differ through naturally occurring variations (e.g. polymorphisms), each with its own valid existence. This clone is substantially in agreement with the reference, but a complete review of all prevailing variants is recommended prior to use. <a href="#">More info</a>
<b>OTI Annotation:</b>	This clone was engineered to express the complete ORF with an expression tag. Expression varies depending on the nature of the gene.
<b>Components:</b>	The ORF clone is ion-exchange column purified and shipped in a 2D barcoded Matrix tube containing 10ug of transfection-ready, dried plasmid DNA (reconstitute with 100 ul of water).
<b>Reconstitution Method:</b>	<ol style="list-style-type: none"><li>1. Centrifuge at 5,000xg for 5min.</li><li>2. Carefully open the tube and add 100ul of sterile water to dissolve the DNA.</li><li>3. Close the tube and incubate for 10 minutes at room temperature.</li><li>4. Briefly vortex the tube and then do a quick spin (less than 5000xg) to concentrate the liquid at the bottom.</li><li>5. Store the suspended plasmid at -20°C. The DNA is stable for at least one year from date of shipping when stored at -20°C.</li></ol>
<b>RefSeq:</b>	<a href="#">NM_001080417.3</a>
<b>RefSeq Size:</b>	6087 bp
<b>RefSeq ORF:</b>	2610 bp
<b>Locus ID:</b>	23361
<b>UniProt ID:</b>	<a href="#">Q9UEG4</a>
<b>Cytogenetics:</b>	16p11.2
<b>MW:</b>	96.4 kDa
<b>Gene Summary:</b>	May be involved in transcriptional regulation.[UniProtKB/Swiss-Prot Function]

Product images:



Circular map for RC217965



Western blot validation of overexpression lysate (Cat# [LY421634]) using anti-DDK antibody (Cat# [TA50011-100]). Left: Cell lysates from untransfected HEK293T cells; Right: Cell lysates from HEK293T cells transfected with RC217965 using transfection reagent MegaTran 2.0 (Cat# [TT210002]).