

## Product datasheet for **RC217960**

### **RBFOX1 (NM\_018723) Human Tagged ORF Clone**

#### Product data:

Product Type:	Expression Plasmids
Product Name:	RBFOX1 (NM_018723) Human Tagged ORF Clone
Tag:	Myc-DDK
Symbol:	RBFOX1
Synonyms:	2BP1; A2BP1; FOX-1; FOX1; HRNBP1
Mammalian Cell Selection:	Neomycin
Vector:	pCMV6-Entry (PS100001)
E. coli Selection:	Kanamycin (25 ug/mL)
ORF Nucleotide Sequence:	>RC217960 representing NM_018723 Red=Cloning site Blue=ORF Green=Tags(s)

TTTTGTAATACGACTCACTATAGGGCGGCCGGAATTCGTCGACTGGATCCGGTACCGAGGAGATCTGCC  
GCC**CGGATCGCC**

ATGAATTGTGAAAGAGAGCAGCTAAGGGTAATCAGGAAGCAGCCGCTGCCCTGACACAATGGCTCAGC  
CTTACGCTTCGGCCAGTTTGTCTCCCCGAGAACGGTATCCCCGCGGAATACACGGCCCTCATCCCCA  
CCCCGCGCAGAGTACACAGGCCAGACCAGGTTCCCGAGCACACATTAAACCTGTACCCTCCCGCCAG  
ACGCACTCCGAGCAGAGCCGGCGGACACGAGCGCTCAGACCGTCTCTGGCACCACACAGACAGATG  
ACGCAGACCCGAGGATGCCAGCCCCAGACACAACCTTCTGAAAACACGAAAACAAGTCTCAGCCAA  
GCGGCTGCATGTCTCAATATCCCTTCAGGTTCCGGATCCGGACCTCAGACAAATGTTTGGTCAATTT  
GGTAAAATCTTAGATGTTGAAATATTTTTAATGAGCGAGGCTCAAAGGGATTTGGTTTCGTAACTTTCG  
AAAATAGTGCCGATGCGGACAGGGCAGGGAGAAAATTACACGGCACCGTGGTAGAGGGCCGTAATAATCGA  
GGTAAATAATGCCACAGCACGTGTAATGACAAAATAAAAGACCGTCAACCCTTATACAAATGGCTGGAAA  
TTGAATCCAGTTGTGGGTGACGTCTACAGTCCCGAATTCTATGCAGGCACGGTCTGTGTGCCAGGCCA  
ACCAGGAGGGATCTTCCATGTACAGTCCCCAGTTCACTTGTATATACTTCTGCAATGCCAGGCTTCCC  
GTATCCAGCAGCCACCGCGCGGCCCTACCGAGGGCGCACCTGCGAGGCCGGTTCGACCCGTGTAC  
AACACCTTCAGGGCCGCGCGCCCCGCCCGATCCCGGCTACGGCGGTGTTGTTTACCAGGATGGAT  
TTTATGGTGCAGACATTTATGGTGGTTATGCTGCATACCGCTACGCCAGCCTACCCCTGCCACTGCCGC  
TGCTACAGTGACAGTTACGGACGAGTTTATGCTGCCAGCCCTACCACCACGCCTTGCTCCAGCCCC  
ACCTACGGCGTTGGTGCCATGAATGCTTTTGCACCTTTGACTGATGCCAAGACTAGGAGCCATGCTGATG  
ATGTGGTCTCGTTCTTTCTTCATTGCAGGCTAGTATATACCGAGGGGATACAACCGTTTTGCTCCATA  
C

**ACGCGT**ACGCGGCCGCTCGAGCAGAACTCATCTCAGAAGAGGATCTGGCAGCAAATGATATCCTGGATT  
ACAAGGATGACGACGATAAGGTTTAA



[View online >](#)



**Reconstitution Method:**

1. Centrifuge at 5,000xg for 5min.
2. Carefully open the tube and add 100ul of sterile water to dissolve the DNA.
3. Close the tube and incubate for 10 minutes at room temperature.
4. Briefly vortex the tube and then do a quick spin (less than 5000xg) to concentrate the liquid at the bottom.
5. Store the suspended plasmid at -20°C. The DNA is stable for at least one year from date of shipping when stored at -20°C.

**RefSeq:** [NM\\_018723.4](#)

**RefSeq Size:** 2279 bp

**RefSeq ORF:** 1194 bp

**Locus ID:** 54715

**UniProt ID:** [Q9NWB1](#)

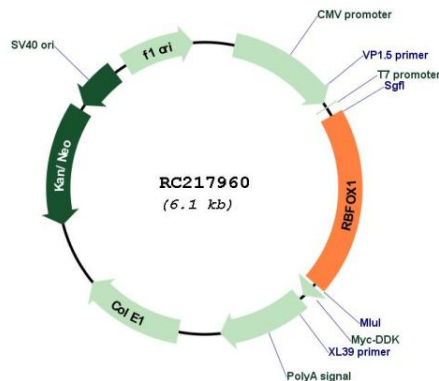
**Cytogenetics:** 16p13.3

**Domains:** RRM

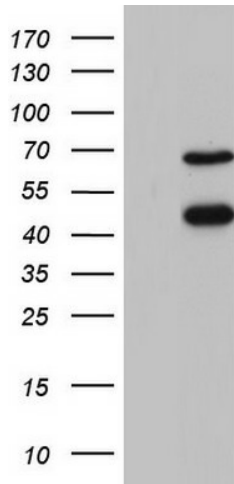
**MW:** 42.6 kDa

**Gene Summary:** The Fox-1 family of RNA-binding proteins is evolutionarily conserved, and regulates tissue-specific alternative splicing in metazoa. Fox-1 recognizes a (U)GCAUG stretch in regulated exons or in flanking introns. The protein binds to the C-terminus of ataxin-2 and may contribute to the restricted pathology of spinocerebellar ataxia type 2 (SCA2). Ataxin-2 is the product of the SCA2 gene which causes familial neurodegenerative diseases. Fox-1 and ataxin-2 are both localized in the trans-Golgi network. Several alternatively spliced transcript variants encoding different isoforms have been found for this gene. [provided by RefSeq, Nov 2011]

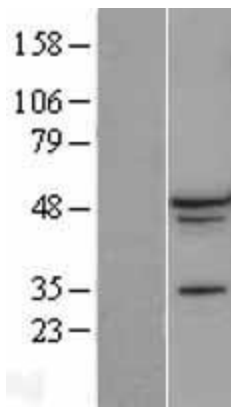
### Product images:



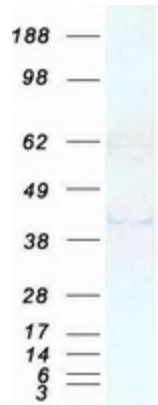
Circular map for RC217960



HEK293T cells were transfected with the pCMV6-ENTRY control (Cat# [PS100001], Left lane) or pCMV6-ENTRY RBFOX1 (Cat# RC217960, Right lane) cDNA for 48 hrs and lysed. Equivalent amounts of cell lysates (5 ug per lane) were separated by SDS-PAGE and immunoblotted with anti-RBFOX1 (Cat# [TA803488]). Positive lysates [LY402712] (100ug) and [LC402712] (20ug) can be purchased separately from OriGene.



Western blot validation of overexpression lysate (Cat# [LY428043]) using anti-DDK antibody (Cat# [TA50011-100]). Left: Cell lysates from untransfected HEK293T cells; Right: Cell lysates from HEK293T cells transfected with [RC226569] using transfection reagent MegaTran 2.0 (Cat# [TT210002]).



Coomassie blue staining of purified RBFOX1 protein (Cat# [TP317960]). The protein was produced from HEK293T cells transfected with RBFOX1 cDNA clone (Cat# RC217960) using MegaTran 2.0 (Cat# [TT210002]).