

Product datasheet for **RC217959**

MAP6 (NM_033063) Human Tagged ORF Clone

Product data:

Product Type:	Expression Plasmids
Product Name:	MAP6 (NM_033063) Human Tagged ORF Clone
Tag:	Myc-DDK
Symbol:	MAP6
Synonyms:	MAP6-N; MTAP6; N-STOP; STOP
Mammalian Cell Selection:	Neomycin
Vector:	pCMV6-Entry (PS100001)
E. coli Selection:	Kanamycin (25 ug/mL)



[View online »](#)

ORF Nucleotide
Sequence:

>RC217959 representing NM_033063
Red=Cloning site Blue=ORF Green=Tags(s)

TTTTGTAATACGACTCACTATAGGGCGGCCGGGAATTCGTCGACTGGATCCGGTACCGAGGAGATCTGCC
GCC**GCGATCGCC**

ATGGCGTGGCCGTGCATCACGAGGGCTGCTGCATCGCCCGTTCTGGAACCACTGGACAAAGCGGACA
TCGCTGTGCCGCTGGTTTTACCAAGTACTCGGAGGCCACCGAGCACCCGGGCGCCCGCCGAGCCACC
GCCGCCGACAGCAGAGCGCAGCCGCGCTCGCGCCCCCTCGGCGCGCGGTTGCCATAGAGACGCAG
CCAGCCCAGGGGAGTTGGATGCAGTTGCCCGGCAACGGGGCCAGCGCTGGCCTACCGCGAGCGCG
AGCCGGCGGGGGCCCCGGCCGAGCGGGCCGGCCGGCTGGGCTCCGGCTCCACTCCGGCCCCGC
GGACTCGTGATGCGGCAGGATTACCGAGCCTGGAAGGTGCAGCGCCGAGCCAGCTGCCGGCCGCGC
AGCGAATACCAGCCCTCCGACGCTCCCTTCGAGCGGAGACCCAGTACCAGAAGGACTTCGCGCCTGGC
CGTGCCTGCGCCGCGGGACCACCCGTTGATCCCAAGCCGTCAGATCTCTCGGCGCTCCAGGGCTC
GGCGCCATTCTCGGGCGCCCAAGCGCCGGCCGAGAGCCAGGAGCGCTGGCCAGTGCAGCGCCGCGCT
GAGGCCCGGGAGCAGGAGCGGCCCCCGCGGAGCGGGTGGCTGGCGGGCGAAAAGGCGTCCGGGGCGG
ACGAGCGCGACACGCGCAGGAAGGCCGGGCTGCCTGGATGGTGCGCCGCGCCGAGGGCCTGGGGCACGA
GCAGAGCCGCTGCCCGCGGCCAGGCCAGGTCCAGGCCACCGGCCCGAGGCTGGCAGGGGGCGCGCC
GCGGGCAGCGCCCTCAACCGGCAATCCGCGAGGAGTGGCGAGTGCAGTGAGCAGCTCCTACAGGAATG
AATTCAGGGCATGGACGGACATCAAGCTGTGAAACCAATAAAGGCCAAGCCCAGTACAAGCCCCAGA
TGATAAGATGGTTCATGAGACGACTACAGTGCTCAGTTCAAAGGAGAGGCCAGCAAGCCAACAACAGT
GACAATAAGGTCATTGATCGCAGAAGAATACGCAGCCTCTACAGCGAACCCCTCAAGGAACCCCCAAGG
TGGAAAAACCTAGTGTTCAGAGTTCCAACCAAAAAAGACCTCAGCGAGCCATAAGCCACGAGGAAGGC
CAAAGACAAGCAGGCGGTGTCAGGCCAGGCTGCCAAGAAAAAGCGCGGAGGGCCCGAGTACCACCAAG
CCAGACGACAAGGAGCAAAGCAAAGAGATGAACAATAAACTGGCTGAGGGCAAAGAGAGCCTGGCTCAAC
CCGTCAAGTCAAGTCAAGGTCTGTAGCCACAGAGCCAGACAAGGATCAAGGTTCTGTGGT
CCCAGGCCCTTCTGAAAGGTCAAGGCTCTATGGTCAAGAGCCTCTGAAGAAGCAAGGTTCTGTGGTCCCA
GGGCTCCAAAGGATCTAGGTCCCATGATCCCATACAGTCAAGGATCAAGATCACACGGTCCCTGAGC
CTTTAAAGAATGAAAGCCTGTTATCTCAGCACCAGTCAAGGACCAAGGTCCCTCGGTCCAGTCTCTCC
AAAGAATCAAAGTCCATGGTCCAGCAAAGTTAAGGATCAAGGCTCTGTGGTACCAGAGTCTCTAAAG
GATCAAGGTCCTAGGATTCTGAGCCTGTGAAGAATCAAGCTCCTATGGTCCCAGCACCTGTCAAGGATG
AAGGTCCTAGGTTCTGAGCATCTGCAAGGATCAAGGTCCATGGTCTCAGCACCTGTCAAGGATCAAGG
TCCCATAGTCCAGCACCTGTCAAGGTTGAAGTCCCATAGTCCAGCACCTGTCAAGGATGAAGTCCC
ATGGTCTCAGCACCTATCAAGGATCAAGATCCCATGGTCCCAGAGCATCCGAAGGATGAAAGTGCCATGG
CCACAGCACCCATAAAGAATCAAGGTTCCATGGTCTCTGAGCCTGTAAAGAATCAAGGTTTGTGGTCTC
AGGGCCAGTCAAGGATCAAGATGTTGTAGTCCCAGAGCATGCAAAGGTTCAAGTCTGCAGTGTGGCA
CCTGTAAGAATCAAGGTCCTGTGGTCCCCGAGTCCGTGAAGAATCAAGACCCATTCTCCAGTACTAG
TTAAGGATCAAGGCCCCACAGTCCACAGCCTCCAAGAATCAAGGTCGTATAGTCCCTGAACTCTGAA
GAATCAAGTTCCTATAGTCCCAGTGCCTCTGAAGGATCAAGATCCTCTGGTGCCAGTACCAGCAAAGGAC
CAAGGTCCTGCAGTCCCTGAACCTCTGAAGACTCAAGGTCCAGGACCCCTCAGCTACCTACTGTCTCAC
CTCTACCCGAGTCTATGATCCCAACTGCCCCCATACGAATACATTGAGAGTCCCT

ACGCGTACGCGGCCGCTCGAGCAGAACTCATCTCAGAAGAGGATCTGGCAGCAAATGATATCTGGATT
ACAAGGATGACGACGATAAGGTTTAA

Protein Sequence: >RC217959 representing NM_033063
Red=Cloning site Green=Tags(s)

MAWPCITRACCIARFWNLKADIAPLVFTKYSEATEHPGAPPQPPPPQQAQALAPPSARAVAIETQ
PAQGELDAVARATGPAPGPTGEREPAAGPGRSGPGPLGSGSTSGPADSVMRQDYRAWKVQRPEPSRPR
SEYQPSDAPFERETQYQDFRAWPLPRRGDHPWIPKPVQISAASQASAPILGAPKRRPQSQERWPVQAAA
EAREQEAAAPGGAGGLAAGKASGADERDTRRKAGPAWVRRRAEGLGHEQTPLPAAQAQVQATGPEAGRGRA
AADALNRQIREEVASAVSSSYRNEFRAWTDIKPVKPIKAKPQYKPPDDKMVHETSYSAQFKGEASKPTTA
DNKVIDRRRIRSLYSEPFKEPPKVEKPSVQSSPKKTSASHKPTRKAKDKQAVSGQAAKKSAEGPSTTK
PDDKEQSKEMNNKLAEAKESLAQPVSDDSSKTQGPVATEPDKDQGSVVPGLLKGQGPVQEPKQGSVVP
GPPKDLGPMIPLPVKDQDHTVPEPLKNESPVISAPVKDQGPSVPVPPKNQSPMVPKVKDQGSVVPESLK
DQGPRIPVKNQAPMVPAPVKDEGPMVSASVKDQGPMSAPVKDQGPVAPVKGEGPIVPAPVKDEGP
MVSAPIKDQDPMVPEHPKDESAMATAPIKNQGSVMSEPVKNQGLVVSQGVKQDQVVVPEHAKVHDSAVVA
PVKNQGPVVPESVKNQDPIPLVVKDQGPVLPVPPKNQGRIVPEPLKNQVPIVPVPLKDQDPLVPVPAKD
QGFVPEPLKTQGPDPQLPTVSPVPLPRVMIPTAPHTEYIESSP

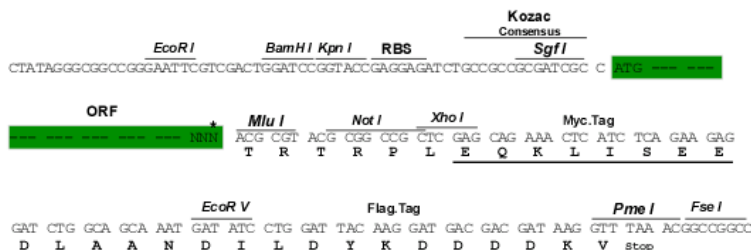
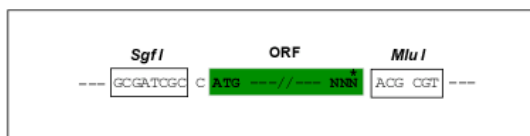
TRTRPLEQKLISEEDLAANDILDYKDDDDKV

Chromatograms: https://cdn.origene.com/chromatograms/mg3816_a08.zip

Restriction Sites: Sgfl-Mlul

Cloning Scheme:

Cloning sites used for ORF Shuttling:



* The last codon before the Stop codon of the ORF

- ACCN:** NM_033063
- ORF Size:** 2439 bp
- OTI Disclaimer:** The molecular sequence of this clone aligns with the gene accession number as a point of reference only. However, individual transcript sequences of the same gene can differ through naturally occurring variations (e.g. polymorphisms), each with its own valid existence. This clone is substantially in agreement with the reference, but a complete review of all prevailing variants is recommended prior to use. [More info](#)
- OTI Annotation:** This clone was engineered to express the complete ORF with an expression tag. Expression varies depending on the nature of the gene.
- Components:** The ORF clone is ion-exchange column purified and shipped in a 2D barcoded Matrix tube containing 10ug of transfection-ready, dried plasmid DNA (reconstitute with 100 ul of water).

Reconstitution Method:

1. Centrifuge at 5,000xg for 5min.
2. Carefully open the tube and add 100ul of sterile water to dissolve the DNA.
3. Close the tube and incubate for 10 minutes at room temperature.
4. Briefly vortex the tube and then do a quick spin (less than 5000xg) to concentrate the liquid at the bottom.
5. Store the suspended plasmid at -20°C. The DNA is stable for at least one year from date of shipping when stored at -20°C.

RefSeq: [NM_033063.1](#), [NP_149052.1](#)

RefSeq Size: 2666 bp

RefSeq ORF: 2442 bp

Locus ID: 4135

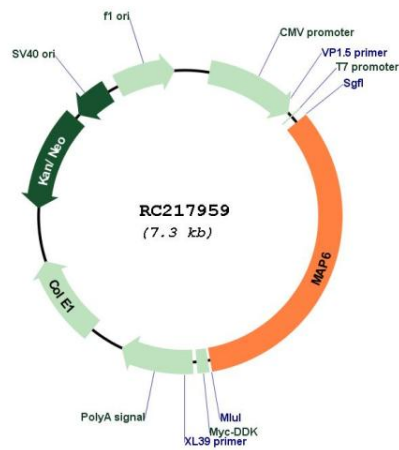
UniProt ID: [Q96JE9](#)

Cytogenetics: 11q13.5

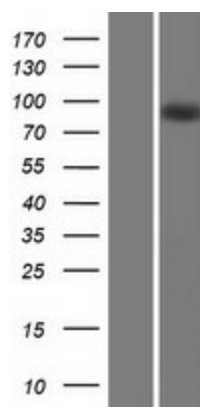
MW: 86.3 kDa

Gene Summary: This gene encodes a microtubule-associated protein. The encoded protein is a calmodulin-binding and calmodulin-regulated protein that is involved in microtubule stabilization. Two transcript variants encoding distinct isoforms have been identified for this gene. [provided by RefSeq, Jul 2008]

Product images:



Circular map for RC217959



Western blot validation of overexpression lysate (Cat# [LY409773]) using anti-DDK antibody (Cat# [TA50011-100]). Left: Cell lysates from untransfected HEK293T cells; Right: Cell lysates from HEK293T cells transfected with RC217959 using transfection reagent MegaTran 2.0 (Cat# [TT210002]).