

Product datasheet for **RC217952**

ANKFN1 (NM_153228) Human Tagged ORF Clone

Product data:

Product Type:	Expression Plasmids
Product Name:	ANKFN1 (NM_153228) Human Tagged ORF Clone
Tag:	Myc-DDK
Symbol:	ANKFN1
Mammalian Cell Selection:	Neomycin
Vector:	pCMV6-Entry (PS100001)
E. coli Selection:	Kanamycin (25 ug/mL)



[View online »](#)

ORF Nucleotide Sequence:

>RC217952 representing NM_153228
 Red=Cloning site Blue=ORF Green=Tags(s)

TTTTGTAATACGACTCACTATAGGGCGGCCGGGAATTCGTCGACTGGATCCGGTACCGAGGAGATCTGCC
 GCC**CGCATCGCC**

ATGGAGGCGTCTCTAACCAGGAGGCTACTCTTTAAAGACAGGCATTTTACTTGCAGCAAAATAATAGGAA
 GGAGATTCGCTTCTTTGCACAGAGGCTGAGCCACAGGAGAAAGCAAAGCCAATGTGATTTATTGAATGA
 AAGCACTGGACAATTACCAACAATTGTTCTCTGCTGCCTCGAACAGCATAAACTGGAATTGTCGTGTG
 AAAATGACGCAACAAATGCAAAATTTACATCTCTGTCAAGTCAAAAAACATAGTGTCTCCCTCATCTCCCA
 ACGCAGCCAAACGCCTGTACAGGAACCTCTCTGAGAACTGAAAGGGAGCCACTTCTCTCGATGAGGC
 CTATTTTAGGACAAGAAGTATCGGCTGAGTCTCAGGAAGACCTCGGTGAATTTCCAGGGCAATGAAGCC
 ATGTTTAGGCGAGTGAACAGCAGGACATGGATGCTGTGCAGATCCTCCTGTATCAGTACACACCAGAAG
 AACTTGACCTCAACACACCTAACAGCGAGGGCTTGACACCCTGGATATTGCCATCATGACCAACAATGT
 GCCATTGCAAGGATTCTTCTGAGGACAGGGGCCGAGAAAGTCCACACTTTGTCAAGCTGGAAAGCCGA
 GCAATGCACCTCAACACACTGGTCCAGGAAGCCAGGAGAGGGTGAAGTGAAGTGTCTGCCAGGTGGAGA
 ATGAAGGATTCACCTCTGGACAACACAGAGAAAGAGAAGCAGCTGAAAGCTGGGAGTGGAGGTATCGGCT
 CTACAGACGCATGAAAACAGGCTTTGAGCATGCCAGAGCCCTGAGATGCCAACCAATGTCTGTCTCATG
 GTAACCAGCAGCACAATCACTCACTGTCAGCTTCCAAGAGCCTCTTAGCGTCAATGCAGCTGTAGTAACCA
 GGTATAAAGTGGAAATGGAGTATGTCGAAGACTTTTCTCCTTTGGCTGGAGAAATCATCATGGATAATCT
 GCAGACTCTGAGATGCACAATCACAGGACTTACAATGGGCCAACAGTATTTTGTCAAGTCTCGGCTTAC
 AATATGAAAGGATGGGGACCTGCTCAGACCACGACACCGGCATGTGCCTCTCCTTCAACTGGAAGACT
 ATGACGACAGAGAGCCAGACACAAGGGACAGAGTGAAGTTTTGGAAGGTCTGCTGCAGCAGGTCGAGC
 CCTTCATCAGCATTACAGTTGCCGGGAAAGCACAAAATTACAAAACACAGGCCGCAAGCAGTCAGTCTCA
 AGAAGCCTGAAACACCTGTTCCATTCTCGAACAAAGTTTGTGAAGACCTTAAAACGGGGACTCTACATAG
 CCGTTATATTTTATTACAAAGACAATATCTTAGTCACCAATGAAGATCAAGTACCAATTGTTGAAATAGA
 TGACTCTCACACCAGTTCTATTACACAAGATTTTCTGTGGTTCACGAAGCTGTCTGTATGTGGGAAGAT
 ATAAGGTGGCTGAGGCAAAGCATACCAATATCCTCATCCTCATCCACAGTGTGCAAACTCGGCAGAAGA
 TGCTCGCAGCAACAGCACAGCTACAGAATTTACTTGGGACACACAACCTGGGAAGAGTTTACTATGAGCC
 CATTAAAGATCGACATGGAACATACTCATAGTACCATCAGGGAGGTGGAGATGCTTTATTCATTTTTT
 AATGGCAATGGATGCAGATCTCAAAGCTGCAAAGCCAGAGAAAGTCTCTATCAACACCTGAGGAGCCAA
 CAGCTTTAGACATTCTACTGATAACCATCCAGGATATTCTATCCTATCACAAAAGGAGTCATCAGCGTCT
 CTTTCTGGATTATCTGGTTACCTAAAGCTCTGTAGCTCTGTGGATCAAATCAAAGTCTTGTGTACC
 CAAAAGTTGCCAACATTCTCTGCCAGTGAAGATCCGTGAAAACAATAATTTCTAGAGAGGAATGGG
 AATGGATCCAAAAGCTTTCTGGCTCTGAATCTATGGAAAGTGTGGATCATACTTCTGACTGCCCCATGCA
 ATTGTTCTTCTACGAGCTCCAGATGGCAGTGAAGCTCTCCTCAGCAGATCAATATACCTCTACACCAG
 GCAAGGAACTCCGCCTTACACACAGGAGGTGTTGGAATGGGTCAATGTGTCTTTCTTCTCCTGC
 TCCCTGCCTCAGACGACGTCTGTACAGCCCCAGGACAGAATAATCCTTACACCCCACTCAGGGTTTCT
 TAACCTCCCTCTCAGATGTTTGAACCTGGTATAGTAGCTTGTTCACC

ACGCGTACGCGGCCGCTCGAGCAGAAACTCATCTCAGAAGAGGATCTGGCAGCAAATGATATCCTGGATT
 ACAAGGATGACGACGATAAGGTTTAA

Protein Sequence: >RC217952 representing NM_153228
Red=Cloning site Green=Tags(s)

```
MEASLTRRLLFKDRHFTCSKIIGRRFACFAQRLSHRRKQSQCDLLNESTGQLPTTCSAASNSINWNCRV
KMTQQMQNLHLCSKKSAPSSPNAAKRLYRNLSEKLGSHSSDFEAYFRTRTRDRLSLRKTSVNFQGNEA
MFEAVEQQDMDAVQILLYQYTPPEELDLNTPNSEGLTPLDIAIMTNNVPIARILLRTGARESPHFVLSER
AMHLNLTVQEAQERVSELSAQVENEFTLDNTEKEKQLKAWEWRYRLYRRMKTGFEHARAPEMPTNVCLM
VTSSTSLTVSFQEPLSVNAAVVTRYKVEWSMEDFSPLAGEIIMDNLQTLRCTITGLTMGQQYFVQVSAY
NMKGWGAQTTTTACASPSNWKDYDDREPRHKQSEVLEGLLQQVRLHQHYSCRESTKLQTTGRKQSVS
RSLKHLFHSSNKFKVTKLRGLYIAVIFYKDNILVTNEDQVPIVEIDDSHTSSITQDFLWFTKLSMWED
IRWLRQSIPISSSSSTVLQTRQKMLAATAQLQNLGTHNLGRVYVEPIKDRHGNILIVTIREVEMLYSFF
NGKWMQISKLQSQRSLSTPEEPTALDILLITIQDILSYHKRSHQRLFPGLYLGYLKLCSVDQIKVLVT
QKLPNILCHVKIRENNNISREEWEWIQKLSGSESMESVDHTSDCPMQLFFYELQMAVKALLQQINIPLHQ
ARNFRLYTQEVLEMGNVSFLLLLPASDDVCTAPGQNNPYTPHSGFLNPLQMFELGIVACFT
```

TRTRPLEQKLISEEDLAANDILDYKDDDDKV

Chromatograms: https://cdn.origene.com/chromatograms/mk8016_e09.zip

Restriction Sites: SgfI-MluI

Cloning Scheme:

Cloning sites used for ORF Shuttling:



* The last codon before the Stop codon of the ORF

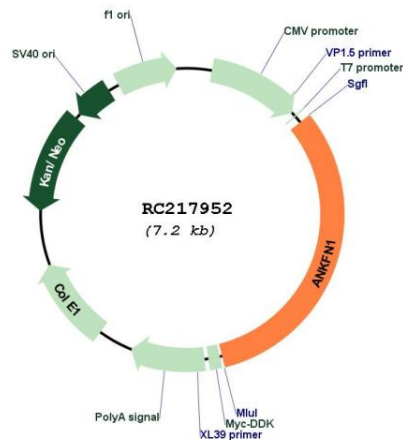
ACCN: NM_153228

ORF Size: 2289 bp

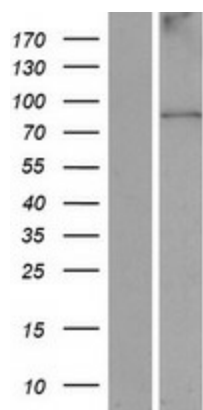
OTI Disclaimer: The molecular sequence of this clone aligns with the gene accession number as a point of reference only. However, individual transcript sequences of the same gene can differ through naturally occurring variations (e.g. polymorphisms), each with its own valid existence. This clone is substantially in agreement with the reference, but a complete review of all prevailing variants is recommended prior to use. [More info](#)

OTI Annotation: This clone was engineered to express the complete ORF with an expression tag. Expression varies depending on the nature of the gene.

Components:	The ORF clone is ion-exchange column purified and shipped in a 2D barcoded Matrix tube containing 10ug of transfection-ready, dried plasmid DNA (reconstitute with 100 ul of water).
Reconstitution Method:	<ol style="list-style-type: none"> 1. Centrifuge at 5,000xg for 5min. 2. Carefully open the tube and add 100ul of sterile water to dissolve the DNA. 3. Close the tube and incubate for 10 minutes at room temperature. 4. Briefly vortex the tube and then do a quick spin (less than 5000xg) to concentrate the liquid at the bottom. 5. Store the suspended plasmid at -20°C. The DNA is stable for at least one year from date of shipping when stored at -20°C.
RefSeq:	<u>NM_153228.2</u> , <u>NP_694960.2</u>
RefSeq Size:	2426 bp
RefSeq ORF:	2292 bp
Locus ID:	162282
UniProt ID:	<u>Q8N957</u>
Cytogenetics:	17q22
Domains:	ANK, FN3
Protein Families:	Druggable Genome
MW:	87.4 kDa

Product images:


Circular map for RC217952



Western blot validation of overexpression lysate (Cat# [LY407154]) using anti-DDK antibody (Cat# [TA50011-100]). Left: Cell lysates from untransfected HEK293T cells; Right: Cell lysates from HEK293T cells transfected with RC217952 using transfection reagent MegaTran 2.0 (Cat# [TT210002]).