

Product datasheet for RC217951

Galectin 8 (LGALS8) (NM_201545) Human Tagged ORF Clone

Product data:

Product Type:	Expression Plasmids
Product Name:	Galectin 8 (LGALS8) (NM_201545) Human Tagged ORF Clone
Tag:	Myc-DDK
Symbol:	Galectin 8
Synonyms:	Gal-8; PCTA-1; PCTA1; Po66-CBP
Mammalian Cell Selection:	Neomycin
Vector:	pCMV6-Entry (PS100001)
E. coli Selection:	Kanamycin (25 ug/mL)
ORF Nucleotide Sequence:	>RC217951 representing NM_201545 Red=Cloning site Blue=ORF Green=Tags(s)

TTTTGTAATACGACTCACTATAGGGCGGCCGGAATTCGTCGACTGGATCCGGTACCGAGGAGATCTGCC
GCC**CGATCGCC**

ATGATGTTGTCCTTAAACAACCTACAGAATATCATCTATAACCCGGTAATCCCGTTTGTGGCACCATTCC
CTGATCAGCTGGATCCTGGAACCTTGGATTGTGATACGTGGGCATGTTCTAGTGACGCAGACAGATTCCA
GGTGGATCTGCAGAATGGCAGCAGCATGAAACCTCGAGCCGATGTGGCCTTTCATTTCAATCCTCGTTTC
AAAAGGGCCGGCTGCATTGTTTGAATACTTTGATAAATGAAAAATGGGACGGGAAGAGATCACCTATG
ACACGCCCTTCAAAGAGAAAAGTCTTTGAGATCGTGATTATGGTGCTGAAGGACAAATCCAGGTGGC
TGTAATGAAAAACATACTCTGCTCTATGGCCACAGGATCGGCCAGAGAAAATAGACACTCTGGGCATT
TATGGCAAAGTGAATATCACTCAATTGTTTTAGCTTCAGCTCGGACTTACAAAGTACCAAGCATCTA
GTCTGGAAGTACAGAGATAAGTAGAGAAAATGTTCCAAGTCTGGCAGCCCGAGCTTCTAGTAATAG
AGGAGGAGACATTTCTAAAATCGCACCCAGAAGTGTCTACACCAAGAGCAAAGATTGACTGTCAATCAC
ACTTTGACTTGCACAAAATACCACCTATGAACTATGTGTCAAAGAGGCTGCCATTGCTGCAAGGTTGA
ACACCCCATGGGCCCTGGACGAACTGTCGTGTTAAAGGAGAAGTGAATGCAATGCCAAAAGCTTTAA
TGTTGACCTACTAGCAGGAAAATCAAAGGATATTGCTCTACACTGAACCCACGCTGAATATTAAGCA
TTTGTAAGAAATCTTTTCTTCAGGAGTCTGGGAGAAGAAGAGAAAATATTACCTCTTTCCCATTTA
GTCCTGGGATGTACTTTGAGATGATAATTTATTGTGATGTTAGAGAATTCAGGTTGACGTAATGGCGT
ACACAGCTGGAGTACAAACACAGATTTAAAGAGCTCAGCAGTATTGACACGCTGAAAATTAATGGAGAC
ATCCACTACTGGAAGTAAGGAGCTGG

ACGCGTACGCGGCCGCTCGAGCAGAAAATCATCTCAGAAGAGGATCTGGCAGCAAATGATATCCTGGATT
ACAAGGATGACGACGATAAGGTTTAA



[View online »](#)

Protein Sequence: >RC217951 representing NM_201545
 Red=Cloning site Green=Tags(s)

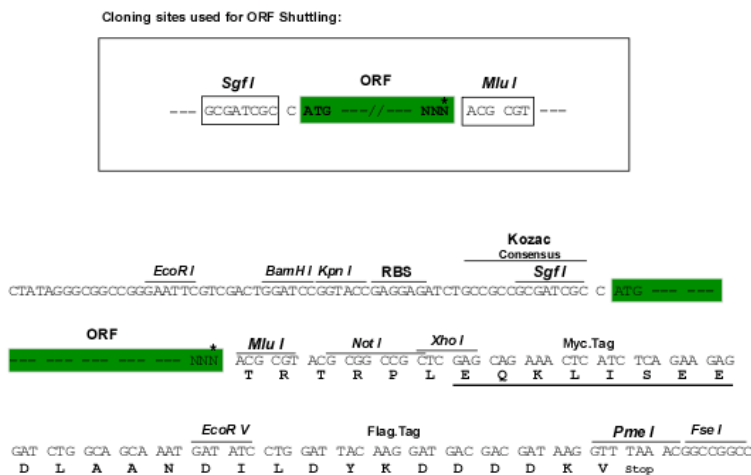
MMLSLNNLQNIINYNPVPIFVGTIPDQLDPGTLIVIRGHVPSDADRQVDLQNGSSMKPRADVAFFHNPRF
 KRAGCIVCNTLINEKWGREEITYDTPFKREKSFEIVIMVLKDKFQVAVNGKHTLLYGHRI GPEKIDTLGI
 YGKVNIIHSIGFSFSSDLQSTQASLEL TEISRENVPKSGTPQLPSNRGGDISKIAPRTVYTKSKDSTVNH
 TLTCTKIPPMNYVSKRLPFAARLNTMPMGPGRTVVVKGEVNANAKSFNVDLLAGKSKDIALHLNPRLNKA
 FVRNSFLQESWGEEERNITSFPPSPGMYFEMIIYCDVREFKVAVNGVHSLEYKHRFKELSSIDTLEINGD
 IHLLEVRSW

TRTRPLEQKLISEEDLAANDILDYKDDDDKV

Chromatograms: https://cdn.origene.com/chromatograms/mk8054_e12.zip

Restriction Sites: SgfI-MluI

Cloning Scheme:



* The last codon before the Stop codon of the ORF

ACCN: NM_201545

ORF Size: 1077 bp

OTI Disclaimer: The molecular sequence of this clone aligns with the gene accession number as a point of reference only. However, individual transcript sequences of the same gene can differ through naturally occurring variations (e.g. polymorphisms), each with its own valid existence. This clone is substantially in agreement with the reference, but a complete review of all prevailing variants is recommended prior to use. [More info](#)

OTI Annotation: This clone was engineered to express the complete ORF with an expression tag. Expression varies depending on the nature of the gene.

Components: The ORF clone is ion-exchange column purified and shipped in a 2D barcoded Matrix tube containing 10ug of transfection-ready, dried plasmid DNA (reconstitute with 100 ul of water).

Reconstitution Method:

1. Centrifuge at 5,000xg for 5min.
2. Carefully open the tube and add 100ul of sterile water to dissolve the DNA.
3. Close the tube and incubate for 10 minutes at room temperature.
4. Briefly vortex the tube and then do a quick spin (less than 5000xg) to concentrate the liquid at the bottom.
5. Store the suspended plasmid at -20°C. The DNA is stable for at least one year from date of shipping when stored at -20°C.

RefSeq: [NM_201545.2](#)

RefSeq Size: 2815 bp

RefSeq ORF: 1080 bp

Locus ID: 3964

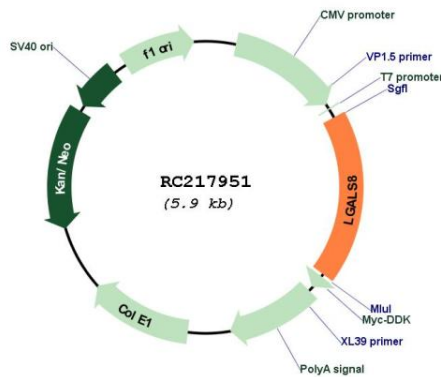
UniProt ID: [O00214](#)

Cytogenetics: 1q43

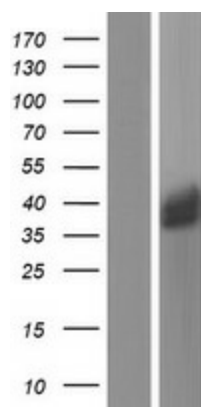
MW: 40.2 kDa

Gene Summary: This gene encodes a member of the galectin family. Galectins are beta-galactoside-binding animal lectins with conserved carbohydrate recognition domains. The galectins have been implicated in many essential functions including development, differentiation, cell-cell adhesion, cell-matrix interaction, growth regulation, apoptosis, and RNA splicing. This gene is widely expressed in tumoral tissues and seems to be involved in integrin-like cell interactions. Alternatively spliced transcript variants encoding different isoforms have been identified. [provided by RefSeq, Jul 2008]

Product images:



Circular map for RC217951



Western blot validation of overexpression lysate (Cat# [LY416600]) using anti-DDK antibody (Cat# [TA50011-100]). Left: Cell lysates from untransfected HEK293T cells; Right: Cell lysates from HEK293T cells transfected with [RC220102] using transfection reagent MegaTran 2.0 (Cat# [TT210002]).