

Product datasheet for **RC217949**

ZNF549 (NM_153263) Human Tagged ORF Clone

Product data:

Product Type:	Expression Plasmids
Product Name:	ZNF549 (NM_153263) Human Tagged ORF Clone
Tag:	Myc-DDK
Symbol:	ZNF549
Mammalian Cell Selection:	Neomycin
Vector:	pCMV6-Entry (PS100001)
E. coli Selection:	Kanamycin (25 ug/mL)



[View online »](#)

ORF Nucleotide Sequence:

>RC217949 representing NM_153263
 Red=Cloning site Blue=ORF Green=Tags(s)

TTTTGTAATACGACTCACTATAGGGCGGCCGGAATTCGTCGACTGGATCCGGTACCGAGGAGATCTGCC
 GCC**CGATCGCC**

ATGGCCGAGGCAGCGCTAGTGAATACGCCGAGGGCCATGTGACCTTTGAGGATATTGCTGTGACTTCT
 CCCAGGAGGAGTGGGCCCTCCTTGATGAAGCTCAAAGGTCCCTGTATCATGATGTGATGCTGGAGAACTT
 TTCGTTATGGCCTCAGTAGGTTGTTTGCATGGAATAGAGGCTGAGGAGGCCCTTCTGAGCAGACTCTT
 TCTGCGCAAGGAGTGTACAGGCCAGGACTCCAAAGCTAGGTCCTTCCATCCCAAATGCTCATTCTGTG
 AGATGTGTATCCTGGTCAAGAAACATTTTGTACCTCAGTGAGCATCAGGGGACACTTCCCTGGCAGAA
 ACCTTATACGCTGTGGCCAGTGGGAAATGGTTTTTCAATTTGGTTCTAACCTGCAACAGCACCAGAACCAG
 GACAGTGGAGAGAAACACATCAGAAAGGAGGAGAGCAGTGCCTTGCTTCTGAATAGCTGCAAAATCCTC
 TGTCAGACAATCTTTCCATGCAAAGATGTTGAGAAGGATTTTCAACCATCTGGGCCTTCTCCAACA
 CCAGACCACCCACAGCAGACAAGAGTATGCACATAGAAGCAGGGAGACCTTTCAACAAAGACGTTACAAA
 TGTGAGCAAGTTTTCAATGAGAAAGTTCATGTTACTGAGCATCAGAGAGTCCACACTGGAGAAAAAGCTT
 ATAAGCGTAGGGAATATGGGAAATCCTTGAACCTAAATACTTATTTGTTGAACACCAGAGAACCATAA
 TGCAGAAAAGCCTTATGTGTGCAATATATGTGGGAAATCATTCCCTCCATAAAACAACTCGTTGGGCAC
 CAGCAGAGAATTCACACTAGAGAAAGGCTTATGTGTGCATCGAATGTGGGAAATCCTTGAGCTCCAAAT
 ACTCACTTGTGGAAACACCAGAGAACCATAATGGAGAAAAGCCTTATGTGTGCAATGTATGTGGGAAATC
 ATTCGCCACAACAAACATTTGTTGGCCATCAGCAGAGAATCCACACTGGAGAGAGGCCTTATGTGTGT
 ATGGAATGTGGGAAATCTTTTATTCATTCCTATGACCGCATTGACACCCAGAGAGTTCACACTGGAGAAG
 GGGCTTATCAGTGCAGTGAATGTGGGAAATCCTTCATATACAAACAGTCACTTCTTGATCACCATAAGA
 CCACACGGGAGAAAAGCCTTATGAGTGCAAAGAATGTGGGAAAGCCTTCATTACAAAAAAGACTTCTT
 GAGCACCAGAGAATTCATACTGGAGAAAAGCCTTATGTGTGCATCATATGTGGGAAATCATTATCCGCT
 CGTCTGACTACATGCGACACCAGAGAATTCACACTGGAGAAAAGGCTTATGAATGCAGTACTGTGGGAA
 AGCCTTCACTCCAAACAAACACTTCTTAAGCATCACAAATCCACACTAGAGAAAAGCCTTATGAATGC
 AGTGAATGTGGAAAAGCCTTCTACCTTGAGGTTAACTTCTTTCAGCACCAGAAATCCATACTAGAGAAC
 AACTTTGTGAGTGAATGAATGTGGAAAAGTCTTACGCCACCAAAAAGACTTCTTGAGCACCAGAAAAGT
 TCACACTGGCGAAAAGCCTGTGAGTGCAGTGAATGTGGGAAATGCTTTAGACACCGCACCAGCCTCATT
 CAACACCAGAAAAGTTCACAGTGGAGAGAGCCTTATAACTGCATGCATGTGAGAAGCCTTATCTATA
 AAAACAACTTGTGAGCATCAGCGAATCCACACCGGAGAAAAGCCTATGAATGTGGTAAATGTGGGAA
 AGCCTTCAACAAAAGATATCCCTTGTGAGCACCAGAAAGGTACATATAACAGAAGAGCC

ACGCGTACGCGGCCGCTCGAGCAGAAACTCATCTCAGAAGAGGATCTGGCAGCAAATGATATCCTGGATT
 ACAAGGATGACGACGATAAGGTTTAA

Protein Sequence:

>RC217949 representing NM_153263
 Red=Cloning site Green=Tags(s)

MAEAAALVNTQPQGHVTFEDIAVYFSQEEWGLLDEAQRCLYHDVMLENFSLMASVGLHGIEAEEAPSEQTL
 SAQGVVSQARTPKLGPSIPNAHSCEMCILVMKDILYLSEHQGTLPWQKPYTSVASGKWFSGSNLQQHQHQ
 DSGEKHIRKEESSALLLNCKIPLSDNLFPCKDVEKDFPTILGLLQHQTTHSRQEYAHRSRETFQQRRYK
 CEQVFNEKVHVTEHQRVHTGEKAYKRREYKSLNSKYLFEHQRTTHNAEKPYVNCICGKSFHLKQTLVGH
 QQRITRERSYVCIIECGKSLSSKYSLVEHQRTNNGEKPYVNCVCGKSFHRKQTFVGHQQRITGERPYVC
 MECGKSF IHSYDRIRHQRVHTGEGAYQCSECGKSF IYKQSLLDHHRITHTGERPYECKEGKAF IHHKRL
 EHQRITHTGEKPYVCIIECGKSFIRSSDYMRHQRIHTGERAYECSDCGKAFISKQTLKHHKIHTRERPYEC
 SECCKGFYLEVKLLQHQRITHTREQLCECNECGKVFVSHQKRLLEHQVHTGEKPECECGKCFRHRISLI
 QHQKVHSGERPYNCTACEKAFIYKNKLVEHQRIHTGEKPYECGKCGKAFNKRYSLVRHQKVHITTEP

TRTRPLEQKLISEEDLAANDILDYKDDDDKV

Chromatograms:

https://cdn.origene.com/chromatograms/mk6596_e09.zip

Restriction Sites: SgfI-MluI

Cloning Scheme:



ACCN: NM_153263

ORF Size: 1881 bp

OTI Disclaimer: The molecular sequence of this clone aligns with the gene accession number as a point of reference only. However, individual transcript sequences of the same gene can differ through naturally occurring variations (e.g. polymorphisms), each with its own valid existence. This clone is substantially in agreement with the reference, but a complete review of all prevailing variants is recommended prior to use. [More info](#)

OTI Annotation: This clone was engineered to express the complete ORF with an expression tag. Expression varies depending on the nature of the gene.

Components: The ORF clone is ion-exchange column purified and shipped in a 2D barcoded Matrix tube containing 10ug of transfection-ready, dried plasmid DNA (reconstitute with 100 ul of water).

Reconstitution Method:

1. Centrifuge at 5,000xg for 5min.
2. Carefully open the tube and add 100ul of sterile water to dissolve the DNA.
3. Close the tube and incubate for 10 minutes at room temperature.
4. Briefly vortex the tube and then do a quick spin (less than 5000xg) to concentrate the liquid at the bottom.
5. Store the suspended plasmid at -20°C. The DNA is stable for at least one year from date of shipping when stored at -20°C.

RefSeq: [NM_153263.2](#)

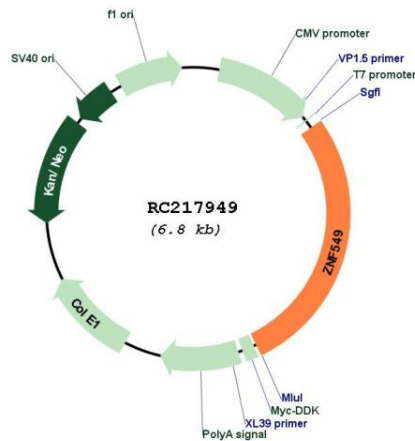
RefSeq Size: 3969 bp

RefSeq ORF: 1884 bp

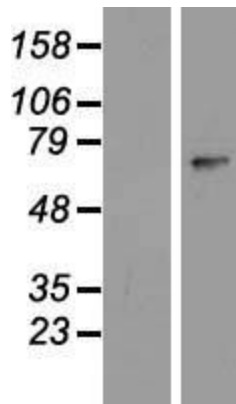
Locus ID: 256051

UniProt ID: [Q6P9A3](#)

Cytogenetics: 19q13.43
Domains: KRAB, zf-C2H2
Protein Families: Transcription Factors
MW: 72.8 kDa
Gene Summary: May be involved in transcriptional regulation.[UniProtKB/Swiss-Prot Function]

Product images:


Circular map for RC217949



Western blot validation of overexpression lysate (Cat# [LY407113]) using anti-DDK antibody (Cat# [TA50011-100]). Left: Cell lysates from untransfected HEK293T cells; Right: Cell lysates from HEK293T cells transfected with RC217949 using transfection reagent MegaTran 2.0 (Cat# [TT210002]).