

## Product datasheet for **RC217948**

### CT62 (NM\_001102658) Human Tagged ORF Clone

#### Product data:

**Product Type:** Expression Plasmids  
**Product Name:** CT62 (NM\_001102658) Human Tagged ORF Clone  
**Tag:** Myc-DDK  
**Symbol:** CT62  
**Mammalian Cell Selection:** Neomycin  
**Vector:** pCMV6-Entry (PS100001)  
**E. coli Selection:** Kanamycin (25 ug/mL)  
**ORF Nucleotide Sequence:** >RC217948 representing NM\_001102658  
Red=Cloning site Blue=ORF Green=Tags(s)

TTTTGTAATACGACTCACTATAGGGCGGCCGGAATTCGTCGACTGGATCCGGTACCGAGGAGATCTGCC  
GCC**CGATCGCC**

ATGATGCATACGACATCCTATAGAAGACTGTCACCACCCACCTCACTGATCAGCCCTCTGCCTACAGCC  
ACACCCACAGAACATTCAGCCATTTCTCCTGTGGTTCCCAGCCTGCAGCACAGCGTCTGCACGTGGA  
CTGGAATGCTGACCTACAGTCTGAGTTCCTGTGCCCTTGCTGGGGCTGACTCTCTACTTGACCTGTAAC  
CCACAACCTGGGCAAGAGAAAATTCTGCAGCCACAGCTCTGAGGACATGAGCAAAATGGTTCCAGACGGA  
ATGTCAAGGATCCCATGAAGTGCAGGGAGTCTTCAGGCCACACTTCAGGTTATCTCCTCTTTCCC  
TTTTCTGCTTCACACTTGCTCTCATCTTTCTCACCCACATCTGGTCAGAGGAGA

**ACGCGT**ACGCGGCCGCTCGAGCAGAACTCATCTCAGAAGAGGATCTGGCAGCAAATGATATCCTGGATT  
ACAAGGATGACGACGATAAGGTTTAA

**Protein Sequence:** >RC217948 representing NM\_001102658  
Red=Cloning site Green=Tags(s)

MMHTTSYRRLSPPHLTDQPSAYSHTHRFESHFSCGSQPAQRLHVELWNADLQSEFLCPCLGLTLYLTCN  
PQLGKRKFCSHSSEDMSKMVSRRNVKDSHEVSGSLQATLQVISFSPFLLHTCSHPLSHPTSGQRR

**TR**TRPLEQKLISEEDLAANDILDYKDDDDKV

**Chromatograms:** [https://cdn.origene.com/chromatograms/mk8016\\_d10.zip](https://cdn.origene.com/chromatograms/mk8016_d10.zip)

**Restriction Sites:** Sgfl-MluI



[View online »](#)

**Cloning Scheme:**


**ACCN:** NM\_001102658

**ORF Size:** 408 bp

**OTI Disclaimer:** The molecular sequence of this clone aligns with the gene accession number as a point of reference only. However, individual transcript sequences of the same gene can differ through naturally occurring variations (e.g. polymorphisms), each with its own valid existence. This clone is substantially in agreement with the reference, but a complete review of all prevailing variants is recommended prior to use. [More info](#)

**OTI Annotation:** This clone was engineered to express the complete ORF with an expression tag. Expression varies depending on the nature of the gene.

**Components:** The ORF clone is ion-exchange column purified and shipped in a 2D barcoded Matrix tube containing 10ug of transfection-ready, dried plasmid DNA (reconstitute with 100 ul of water).

- Reconstitution Method:**
1. Centrifuge at 5,000xg for 5min.
  2. Carefully open the tube and add 100ul of sterile water to dissolve the DNA.
  3. Close the tube and incubate for 10 minutes at room temperature.
  4. Briefly vortex the tube and then do a quick spin (less than 5000xg) to concentrate the liquid at the bottom.
  5. Store the suspended plasmid at -20°C. The DNA is stable for at least one year from date of shipping when stored at -20°C.

**RefSeq:** [NM\\_001102658.1](#), [NP\\_001096128.1](#)

**RefSeq Size:** 1842 bp

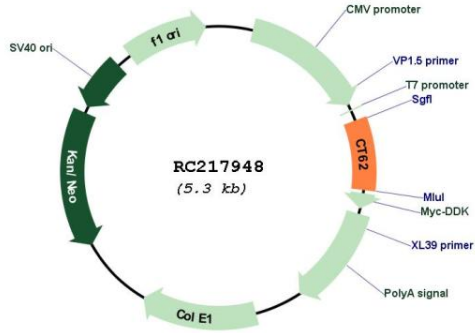
**RefSeq ORF:** 411 bp

**Locus ID:** 196993

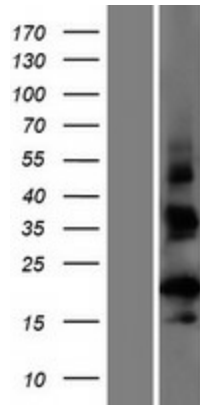
Cytogenetics: 15q23

MW: 15.2 kDa

**Product images:**



Circular map for RC217948



Western blot validation of overexpression lysate (Cat# [LY420183]) using anti-DDK antibody (Cat# [TA50011-100]). Left: Cell lysates from untransfected HEK293T cells; Right: Cell lysates from HEK293T cells transfected with RC217948 using transfection reagent MegaTran 2.0 (Cat# [TT210002]).