

Product datasheet for **RC217945**

UBE2I (NM_194259) Human Tagged ORF Clone

Product data:

Product Type: Expression Plasmids
Product Name: UBE2I (NM_194259) Human Tagged ORF Clone
Tag: Myc-DDK
Symbol: UBE2I
Synonyms: C358B7.1; P18; UBC9
Mammalian Cell Selection: Neomycin
Vector: pCMV6-Entry (PS100001)
E. coli Selection: Kanamycin (25 ug/mL)
ORF Nucleotide Sequence: >RC217945 representing NM_194259
Red=Cloning site Blue=ORF Green=Tags(s)

TTTTGTAATACGACTCACTATAGGGCGGCCGGAATTCGTCGACTGGATCCGGTACCGAGGAGATCTGCC
GCC**CGATCGCC**

ATGTCGGGGATCGCCCTCAGCAGACTCGCCAGGAGAGAAAGCATGGAGGAAAGACCACCCATTTGGTT
TCGTGGCTGTCCCAACAAAAATCCCGATGGCAGCATGAACCTCATGAACGGGAGTGGCCATTCCAGG
AAAGAAAGGGACTCCGTGGGAAGGAGGCTTGTTTAAACTACGGATGCTTTTCAAAGATGATTATCCATCT
TCGCCACCAAAATGTAATTCGAACCACCATTATTTACCCGAATGTGTACCCTTCGGGGACAGTGTGCC
TGTCATCTTAGAGGAGGACAAGGACTGGAGGCCAGCCATCACAATCAAACAGATCCTATTAGGAATACA
GGAACCTCTAAATGAACCAATATCCAAGACCCAGCTCAAGCAGAGGCCTACACGATTTACTGCCAAAAC
AGAGTGGAGTACGAGAAAAGGTCGAGCACAAGCCAAGAAGTTTGCGCCCTCA

ACGCGTACGCGGCCGCTCGAGCAGAACTCATCTCAGAAGAGGATCTGGCAGCAAATGATATCCTGGATT
ACAAGGATGACGACGATAAGGTTTAA

Protein Sequence: >RC217945 representing NM_194259
Red=Cloning site Green=Tags(s)

MSGIALSRLAQRKAWRKDHPFGFVAVPTKNPDGTMNLMNWECAIPGKKGTPWEGGLFKLRMLFKDDYPS
SPPKCKFEPPLFHPNVYPSGTVCLSILEEDKDWRAITIKQILLGIQELLNEPNIQDPAQAEAYTIYQCN
RVEYEKRVRAQAKKFAPS

TRTRPLEQKLISEEDLAANDILDYKDDDDKV

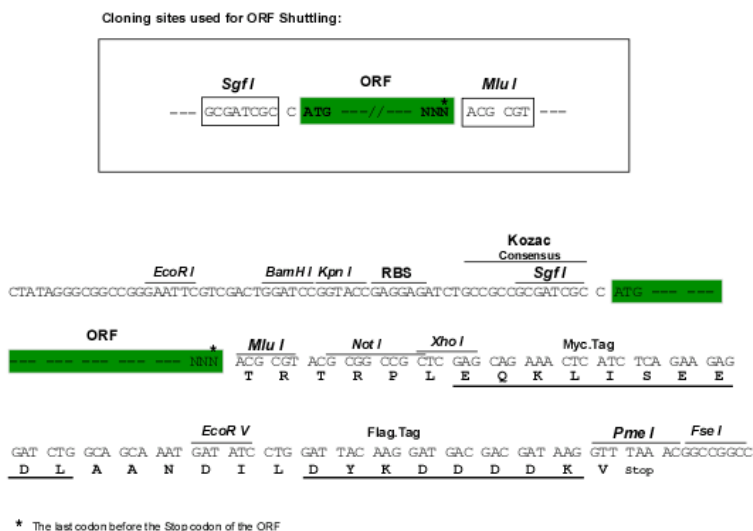
Chromatograms: https://cdn.origene.com/chromatograms/mk6119_a12.zip



[View online »](#)

Restriction Sites: SgfI-MluI

Cloning Scheme:



ACCN: NM_194259

ORF Size: 474 bp

OTI Disclaimer: The molecular sequence of this clone aligns with the gene accession number as a point of reference only. However, individual transcript sequences of the same gene can differ through naturally occurring variations (e.g. polymorphisms), each with its own valid existence. This clone is substantially in agreement with the reference, but a complete review of all prevailing variants is recommended prior to use. [More info](#)

OTI Annotation: This clone was engineered to express the complete ORF with an expression tag. Expression varies depending on the nature of the gene.

Components: The ORF clone is ion-exchange column purified and shipped in a 2D barcoded Matrix tube containing 10ug of transfection-ready, dried plasmid DNA (reconstitute with 100 ul of water).

Reconstitution Method:

1. Centrifuge at 5,000xg for 5min.
2. Carefully open the tube and add 100ul of sterile water to dissolve the DNA.
3. Close the tube and incubate for 10 minutes at room temperature.
4. Briefly vortex the tube and then do a quick spin (less than 5000xg) to concentrate the liquid at the bottom.
5. Store the suspended plasmid at -20°C. The DNA is stable for at least one year from date of shipping when stored at -20°C.

RefSeq: [NM_194259.3](#)

RefSeq Size: 1478 bp

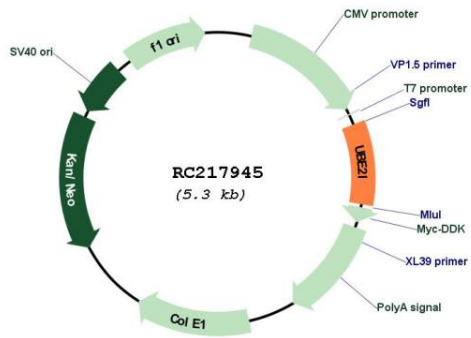
RefSeq ORF: 477 bp

Locus ID: 7329

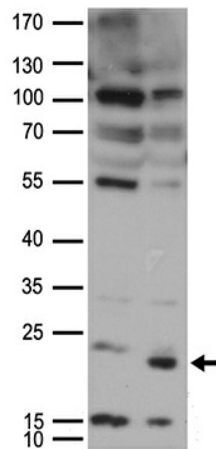
UniProt ID: [P63279](#)
Cytogenetics: 16p13.3
Protein Pathways: Ubiquitin mediated proteolysis
MW: 17.8 kDa

Gene Summary: The modification of proteins with ubiquitin is an important cellular mechanism for targeting abnormal or short-lived proteins for degradation. Ubiquitination involves at least three classes of enzymes: ubiquitin-activating enzymes, or E1s, ubiquitin-conjugating enzymes, or E2s, and ubiquitin-protein ligases, or E3s. This gene encodes a member of the E2 ubiquitin-conjugating enzyme family. Four alternatively spliced transcript variants encoding the same protein have been found for this gene. [provided by RefSeq, Jul 2008]

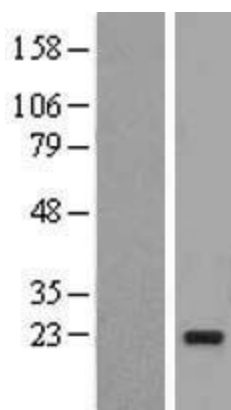
Product images:



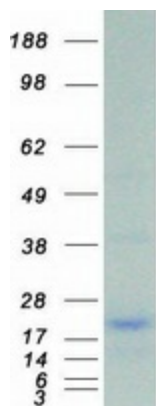
Circular map for RC217945



HEK293T cells were transfected with the pCMV6-ENTRY control (Cat# [PS100001], Left lane) or pCMV6-ENTRY UBE2I (Cat# RC217945, Right lane) cDNA for 48 hrs and lysed. Equivalent amounts of cell lysates (5 ug per lane) were separated by SDS-PAGE and immunoblotted with anti-UBE2I antibody (Cat# [TA890019]). Positive lysates [LY403663] (100ug) and [LC403663] (20ug) can be purchased separately from OriGene.



Western blot validation of overexpression lysate (Cat# [LY403663]) using anti-DDK antibody (Cat# [TA50011-100]). Left: Cell lysates from untransfected HEK293T cells; Right: Cell lysates from HEK293T cells transfected with RC217945 using transfection reagent MegaTran 2.0 (Cat# [TT210002]).



Coomassie blue staining of purified UBE2I protein (Cat# [TP317945]). The protein was produced from HEK293T cells transfected with UBE2I cDNA clone (Cat# RC217945) using MegaTran 2.0 (Cat# [TT210002]).