

## Product datasheet for **RC217939**

### **RAP1GDS1 (NM\_001100429) Human Tagged ORF Clone**

#### **Product data:**

Product Type:	Expression Plasmids
Product Name:	RAP1GDS1 (NM_001100429) Human Tagged ORF Clone
Tag:	Myc-DDK
Symbol:	RAP1GDS1
Synonyms:	GDS1; SmgGDS
Mammalian Cell Selection:	Neomycin
Vector:	pCMV6-Entry (PS100001)
E. coli Selection:	Kanamycin (25 ug/mL)



[View online »](#)

**ORF Nucleotide Sequence:**

>RC217939 representing NM\_001100429  
 Red=Cloning site Blue=ORF Green=Tags(s)

TTTTGTAATACGACTCACTATAGGGCGGCCGGAATTCGTCGACTGGATCCGGTACCGAGGAGATCTGCC  
 GCCGCGATCGCC

ATGGATAATCTCAGTGATACCTGAAGAAGCTGAAGATAACAGCTGTTGACAAGACTGAGGATAGTTTAG  
 AAGGATGCTTGGATTGTCTGCTTCAAGCCCTGGCTCAAAAATAACGGAACAAGTGAAAAATCCAAGC  
 AAGTGGAAATACTCAGCTGTTTGAAGTCTGTTGACTCCACAGTCTTCTGCAAAGCCAAAGTAGCTAAC  
 ATCATAGCAGAAGTAGCCAAAAATGAGTTTATGCGAATCCATGTGTGGATGCTGGATTGATTTACCAC  
 TGGTGCAGCTGCTAAATAGCAAAGACCAGGAAGTCTGCTTCAAACGGGCAGGGCTCTAGGAAACATATG  
 TTACGATAGCCATTGCTTCAAGCTCAGCTTATCAATATGGGTGTTATTCTACCTTAGTAAAATTACTG  
 GGCATCCACTGCCAAAATGCAGCTCTTACAGAAATGTGCTTGTGCAATTTGTAATTTAGCAGAACTTG  
 AGTCAAGTAAAGAACAGTTTGCAGTACAACATTGCTGAAGAGCTAGTAAAACCTTCAAGAAACAAAT  
 AGAACATGATAAGAGAGAAATGATTTTTGAAGTCTTGTCCATTGGCAGAAAATGATGCTATTAACATA  
 CAGCTGGTTGAAGCAGGCCTAGTAGAGTGTCTACTAGAGATTGTTGAGCAAAAAGTGATAGTGAACAA  
 AAGATGATATTACTGAGCTCAAACTGGTTCAGATCTCATGGTTTTATTCTTCTGGAGATGAATCCAT  
 GCAGAAGTATTTGAAGGAGGAAAAGGTAGTGTATTTCAAAGGACTCTCTTGGATCCCATCAAATAAC  
 CACCAGCTACAGCTTGTGGAGCATTGGCAATTGCAAAATTTGCCAGAAATGATGCAAAATGATTCATA  
 TGGTAGACAATGGGATTGTAGAAAACTTATGGATTTACTGGACAGACATGTAGAAGATGGAAATGTAAC  
 AGTACAGCATGCAGCACTAAGTGCCTCAGAAACCTGGCCATTCCAGTTATAAATAAGCAAAGATGTTA  
 TCAGCTGGGGTCACAGAGGCAGTTTGAATTTCTTAACTGAAATGCCTCTGTTCAAGTCAAACCTTC  
 TGGGAACATTAAGAATGTTAATAGATGCACAAGCAGAAGCTGTAACAATGGGAAAGAATGTTAAGTT  
 AGTGGAGCGTTTGGTGAATGGTGTGAAGCCAAAGATCATGCTGGTGTGATGGGGAGTCAAACAGACTG  
 CTGTCTGCCCTTATACGACACAGTAAATCAAAGATGTAATTAACCATTGTGCAGAGTGGTGGCATCA  
 AGCATCTAGTTACCATGGCAACTAGTGAACATGTAATAATGCAGAATGAAGCTCTTGTGCTTTGGCATT  
 AATAGCAGCTTTAGAATTGGGCACTGCTGAGAAAGATCTAGAAAGTCTAACTTGTACAGATTTTACAT  
 AGACTGCTAGCAGATGAGAGAAGTCTCCTGAAATCAAATATAATTCCATGGTCTGATATGTGCTCTTA  
 TGGGATCTGAATGTCTACACAAGGAAGTACAGGATTTGGCTTTTCTAGATGTCGATCCAACTTCGCAG  
 TCATGAGAACAAAAGTGTGCCAGCAGGCCTCTCTCACAGAGCAGAGACTTACTGTGAAAAGC

ACGCGTACGCGGCCGCTCGAGCAGAACTCATCTCAGAAGAGGATCTGGCAGCAAATGATATCCTGGATT  
 ACAAGGATGACGACGATAAGGTTTAA

**Protein Sequence:**

>RC217939 representing NM\_001100429  
 Red=Cloning site Green=Tags(s)

MDNLSDTLKKLKITAVDKTEDSLEGCLDCLLQALAQNNTESEKIQASGILQLFASLLTPQSSCKAKVAN  
 IIAEVAKNEFMRI PCVDAGLISPLVQLLNSKDQEVLLQTGRALGNICYDSHSLQAQLINMGVIPTLVKLL  
 GIHCQNAALTEMCLVAFGNLAELESSKEQFASTNIAEELVKLFKKQIEHDKREMIFEVLAPLAENDAIKL  
 QLVEAGLVECLLEIVQKQVDSKEDDITELKTGSDLMVLLLLGDESMQKLFEGGKGSVFRVLSWIPSN  
 HQLQLAGALAIANFARNDANCIHMVDNGIVEKLMDLLDRHVEDGNVTVQHAALSALRNLAIIPVINKAKML  
 SAGVTEAVLKFLKSEMPVQFKLLGTLRMLIDAQAEAEQLGKNVKLVERLVEWCEAKDHAGVMGESNRL  
 LSALIRHSKSKDVIKTI VQSGGIKHLVTMATSEHVIMQNEALVALALIAALELGTAEKDLESAKLVQILH  
 RLLADERSAPEIKYNSMVLICALMGSECLHKEVQDLAFLDVVSKLRSHENKSVAAQASL TEQRLTVES

TRTRPLEQKLI SEEDLAANDILDYKDDDDKV

**Chromatograms:**

[https://cdn.origene.com/chromatograms/mk8067\\_c01.zip](https://cdn.origene.com/chromatograms/mk8067_c01.zip)

**Restriction Sites:**

Sgfl-Mlul

**Cloning Scheme:**


**ACCN:** NM\_001100429

**ORF Size:** 1674 bp

**OTI Disclaimer:** The molecular sequence of this clone aligns with the gene accession number as a point of reference only. However, individual transcript sequences of the same gene can differ through naturally occurring variations (e.g. polymorphisms), each with its own valid existence. This clone is substantially in agreement with the reference, but a complete review of all prevailing variants is recommended prior to use. [More info](#)

**OTI Annotation:** This clone was engineered to express the complete ORF with an expression tag. Expression varies depending on the nature of the gene.

**Components:** The ORF clone is ion-exchange column purified and shipped in a 2D barcoded Matrix tube containing 10ug of transfection-ready, dried plasmid DNA (reconstitute with 100 ul of water).

- Reconstitution Method:**
1. Centrifuge at 5,000xg for 5min.
  2. Carefully open the tube and add 100ul of sterile water to dissolve the DNA.
  3. Close the tube and incubate for 10 minutes at room temperature.
  4. Briefly vortex the tube and then do a quick spin (less than 5000xg) to concentrate the liquid at the bottom.
  5. Store the suspended plasmid at -20°C. The DNA is stable for at least one year from date of shipping when stored at -20°C.

**RefSeq:** [NM\\_001100429.2](#)

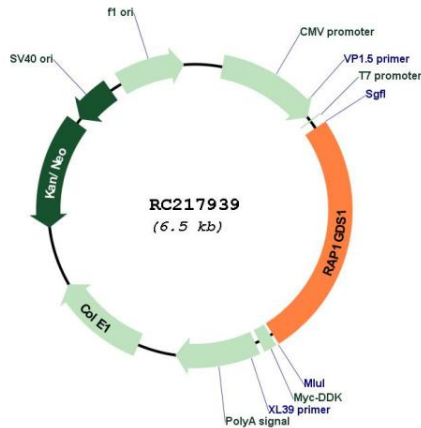
**RefSeq Size:** 3620 bp

**RefSeq ORF:** 1677 bp

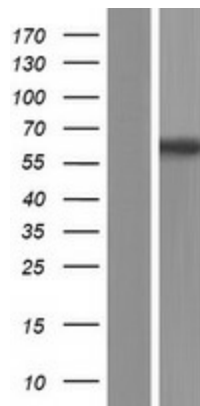
**Locus ID:** 5910

**UniProt ID:** [P52306](#)

**Cytogenetics:** 4q23  
**MW:** 60.9 kDa  
**Gene Summary:** The smg GDP dissociation stimulator (smgGDS) protein is a stimulatory GDP/GTP exchange protein with GTPase activity (Riess et al., 1993 [PubMed 8262526]).[supplied by OMIM, Feb 2010]

**Product images:**


Circular map for RC217939



Western blot validation of overexpression lysate (Cat# [LY420268]) using anti-DDK antibody (Cat# [TA50011-100]). Left: Cell lysates from untransfected HEK293T cells; Right: Cell lysates from HEK293T cells transfected with RC217939 using transfection reagent MegaTran 2.0 (Cat# [TT210002]).