

Product datasheet for **RC217934**

IRF7 (NM_001572) Human Tagged ORF Clone

Product data:

Product Type:	Expression Plasmids
Product Name:	IRF7 (NM_001572) Human Tagged ORF Clone
Tag:	Myc-DDK
Symbol:	IRF7
Synonyms:	IMD39; IRF-7; IRF-7H; IRF7A; IRF7B; IRF7C; IRF7H
Mammalian Cell Selection:	Neomycin
Vector:	pCMV6-Entry (PS100001)
E. coli Selection:	Kanamycin (25 ug/mL)



[View online »](#)

ORF Nucleotide Sequence:

>RC217934 representing NM_001572
 Red=Cloning site Blue=ORF Green=Tags(s)

TTTTGTAATACGACTCACTATAGGGCGGCCGGAATTCGTCGACTGGATCCGGTACCGAGGAGATCTGCC
 GCC**CGGATCGCC**

ATGGCCTTGGCTCCTGAGAGGGCAGCCCCACGCTGCTGTTCCGAGAGTGGCTCCTTGGAGAGATCAGCA
 GCGGCTGCTATGAGGGGCTGCAGTGGCTGGACGAGGCCCGCACCTGTTCCGCGTGCCTGGAAGCACTT
 CGCGCGCAAGGACCTGAGCGAGGCCGACGCGCATCTTCAAGGCCTGGGCTGTGGCCCGCGCAGGTGG
 CCGCTAGCAGCAGGGGAGGTGGCCCGCCCCGAGGCTGAGACTGCGGAGCGCGCCGGCTGAAAAACCA
 ACTTCCGCTGCGCACTGCGCAGCACGCTCGTTCGTGATGCTGCGAGATAACTCGGGGACCCGGCCGA
 CCCGCACAAGGTGTACGCGCTCAGCCGGGAGCTGTGCTGGCGAGAAGGCCAGGCACGGACCAGACTGAG
 GCAGAGGCCCGCGAGCTGTCCACCACCACAGGGTGGGCCCCAGGGCCATTCTGGCACACACATG
 CTGGACTCCAAGCCCAGGCCCTCCCTGCCAGCTGGTGACAAGGGGACCTCCTGCTCCAGGCAGT
 GCAACAGAGCTGCCTGGCAGACCATCTGCTGACAGCGTCATGGGGGCGAGATCCAGTCCCAACCAAGGCT
 CCTGGAGAGGGACAAGAAGGGCTTCCCCTGACTGGGGCCTGTGCTGGAGGCCAGGGCTCCTGTGGGG
 AGCTGTACGGGTGGCAGTAGAGACGACCCCCAGCCCCGGGCCAGCCCGCGGCACTAACGACAGGCGA
 GGCCGCGGCCAGAGTCCCCGACAGGCAGAGCCGTACCTGTACCCCTCCCAAGCGCTGCACCGCG
 GTGCAAGAGCCCAGCCCAGGGGCGCTGGACGTGACCATCATGTACAAGGGCCGACGGTGTGAGAAGG
 TGGTGGGACACCCGAGCTGCACGTTCTATACGGCCCCAGACCAGCTGTCCGGGCCACAGACCCCA
 GCAGGTAGCATTCCCAGCCCTGCCGAGCTCCCGACAGAAAGCAGCTGCGCTACACGGAGGAAGTGTG
 CGGCACGTGGCCCTGGTTGCACCTGGAGCTTCGGGGCCACAGCTGTGGGCCCGCGCATGGCAAGT
 GCAAGGTGTAAGGAGGTGGCGGACCCAGGCTCCGCCAGCCCTCCACCCAGCCCTGCTGCTGCC
 TCGGAAGTGTGACACCCCATCTTCGACTTCAGAGTCTTCTTCCAAGAGCTGGTGAATTCCGGGCACGG
 CAGCGCGTGGCTCCCCACGCTATACCATCTACCTGGGCTTCGGGAGGACCTGTGAGTGGGAGGCCCA
 AGGAGAAGAGCCTGGTCTGGTGAAGCTGGAACCTGGCTGTGCCGAGTGCACCTAGAGGGCACGCAGCG
 TGAGGGTGTGCTTCCCTGGATAGCAGCAGCCTCAGCCTCTGCCTGTCCAGCGCCAACAGCCTCTATGAC
 GACATCGAGTGTCTTATGGAGCTGGAGCAGCCGCCAGCGGACCG

AG**CGGACCG**ACGCGTACGCGGCCGCTCGAGCAGAAACTCATCTCAGAAGAGGATCTGGCAGCAAATGATATCC
 TGGATTACAAGGATGACGACGATAAGGTTTAA

Protein Sequence:

>RC217934 representing NM_001572
 Red=Cloning site Green=Tags(s)

MALAPERAAPRVLFGEWLLGEISSGCEYGLQWLDEARTCFRVPWKHFARKDLSEADARIFKAWAVARGRW
 PPSSRGGPPPEAETAERAGWKTNFRCALRSTRRFVMLRDNSGDPADPHKVYALSRELCWREGPGTDQTE
 AEAPAAVPPPQGGPPGFLAHTHAGLQAPGPLPAPAGDKDLLLLQAVQQSCLADHLLTASWGADPVPTKA
 PGEGQEGLPLTGACAGGPLPAGELYGWAVETTPSPGPQPAALTTGAAAPESPHQAEPLYSPSPSACTA
 VQEPSPGALDVTIMYKGRVTLQKVVGHPSCTFLYGPPDAVRATDPQQVAFPSPAELPDQKQLRYTEELL
 RHVAPGLHLELRGPQLWARRMGKCKVYVEVGGPPGSASPSTPACLLPRNCDTPIFDVRVFFQELVEFRAR
 QRRGSPRYTIYLFQDL SAGRPKEKSLVLVKLEPWL CRVHLEGTQREGVSSLDSSSLSLCLSSANSLYD
 DIECFLELEQPASGP

SGPTRRRLEQKLISEEDLAANDILDYKDDDDKV

Chromatograms:

https://cdn.origene.com/chromatograms/mk6187_b03.zip

Restriction Sites:

Sgfl-RsrII

Cloning Scheme:


ACCN: NM_001572

ORF Size: 1518 bp

OTI Disclaimer: The molecular sequence of this clone aligns with the gene accession number as a point of reference only. However, individual transcript sequences of the same gene can differ through naturally occurring variations (e.g. polymorphisms), each with its own valid existence. This clone is substantially in agreement with the reference, but a complete review of all prevailing variants is recommended prior to use. [More info](#)

OTI Annotation: This clone was engineered to express the complete ORF with an expression tag. Expression varies depending on the nature of the gene.

Components: The ORF clone is ion-exchange column purified and shipped in a 2D barcoded Matrix tube containing 10ug of transfection-ready, dried plasmid DNA (reconstitute with 100 ul of water).

Reconstitution Method:

1. Centrifuge at 5,000xg for 5min.
2. Carefully open the tube and add 100ul of sterile water to dissolve the DNA.
3. Close the tube and incubate for 10 minutes at room temperature.
4. Briefly vortex the tube and then do a quick spin (less than 5000xg) to concentrate the liquid at the bottom.
5. Store the suspended plasmid at -20°C. The DNA is stable for at least one year from date of shipping when stored at -20°C.

Note: Plasmids are not sterile. For experiments where strict sterility is required, filtration with 0.22um filter is required.

RefSeq: [NM_001572.5](#)

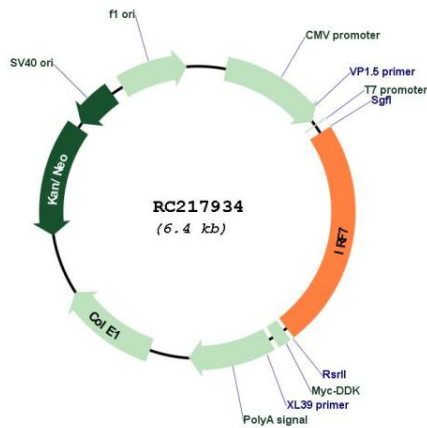
RefSeq Size: 1890 bp

RefSeq ORF: 1512 bp

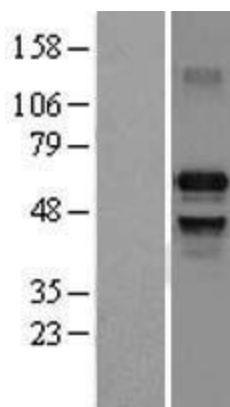
Locus ID: 3665

UniProt ID: [Q92985](#)
Cytogenetics: 11p15.5
Domains: IRF
Protein Families: Transcription Factors
Protein Pathways: Cytosolic DNA-sensing pathway, RIG-I-like receptor signaling pathway, Toll-like receptor signaling pathway
MW: 54.1 kDa
Gene Summary: IRF7 encodes interferon regulatory factor 7, a member of the interferon regulatory transcription factor (IRF) family. IRF7 has been shown to play a role in the transcriptional activation of virus-inducible cellular genes, including interferon beta chain genes. Inducible expression of IRF7 is largely restricted to lymphoid tissue. Multiple IRF7 transcript variants have been identified, although the functional consequences of these have not yet been established. [provided by RefSeq, Jul 2008]

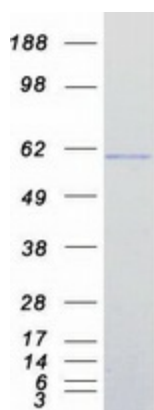
Product images:



Circular map for RC217934



Western blot validation of overexpression lysate (Cat# [LY400601]) using anti-DDK antibody (Cat# [TA50011-100]). Left: Cell lysates from untransfected HEK293T cells; Right: Cell lysates from HEK293T cells transfected with RC217934 using transfection reagent MegaTran 2.0 (Cat# [TT210002]).



Coomassie blue staining of purified IRF7 protein (Cat# [TP317934]). The protein was produced from HEK293T cells transfected with IRF7 cDNA clone (Cat# RC217934) using MegaTran 2.0 (Cat# [TT210002]).