

## Product datasheet for **RC217931**

### Transglutaminase 6 (TGM6) (NM\_198994) Human Tagged ORF Clone

#### Product data:

Product Type:	Expression Plasmids
Product Name:	Transglutaminase 6 (TGM6) (NM_198994) Human Tagged ORF Clone
Tag:	Myc-DDK
Symbol:	Transglutaminase 6
Synonyms:	dj734P14.3; SCA35; TG6; TGM3L; TGY
Mammalian Cell Selection:	Neomycin
Vector:	pCMV6-Entry (PS100001)
E. coli Selection:	Kanamycin (25 ug/mL)



[View online »](#)

ORF Nucleotide  
Sequence:

>RC217931 representing NM\_198994  
Red=Cloning site Blue=ORF Green=Tags(s)

TTTTGTAATACGACTCACTATAGGGCGGCCGGGAATTCGTCGACTGGATCCGGTACCGAGGAGATCTGCC  
GCCGCGATCGCC

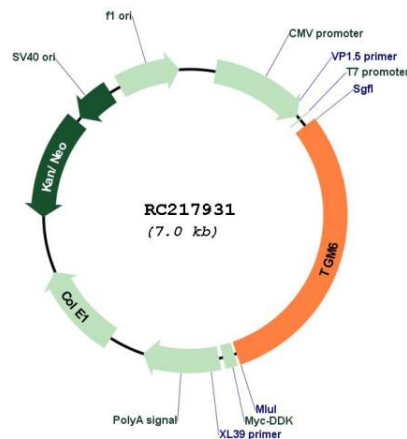
ATGGCAGGGATCAGAGTACCAAGTGGACTGGCAGCGGTGAGGAATGGCGCTGCCACACACCCAGG  
AGTACCCCTGCCCTGAGCTGGTGGTTCGACAGGGGCCAGTCGTTACGCCTCACGCTGGAGCTGAGCAGAGC  
CCTGGACTGTGAGGAGATCCTCATCTTACGATGGAGACAGGACCCCGGGCTTCTGAGGCCCTCCACACC  
AAAGCTGTGTTCCAGACATCGGAGCTGGAGCGGGTGGAGGCTGGACAGCAGCAAGGGAGGCTCAGATGG  
AGAAAACCTGACCGTCAGTCTCGCCAGCCCTCCAGTGTGTCATTGGCCGCTACCTGCTGAGCATCAG  
GCTTCTCTCACCGCAAACACAGCAACCGGAGGCTGGGCGAGTTTGTCTCTTTCAACCCATGGTGT  
GCAGAGGACGATGTGTTCTGGCCTCAGAGGAGGAGACAGGAGTACGTGCTCAGCGACAGCGGCATCA  
TCTCCGAGGCGTGGAGAAGCACATACGAGCCCAGGGCTGGAACACGGGCAGTTTGGAGGACATCCT  
GAACATCTGCCTCTCCATCCTGGATCGAAGCCCCGGTACCAAAAACAACCCAGCCACCGAGTGTCTGC  
CGCCACAACCCCATCTAGCTCACCAGGGTCATCAGTGCCATGGTGAACAGCAACAACGACCGAGGTGTGG  
TGCAAGGACAGTGGCAGGGCAAGTACGGCGGGCCAGCCCGCTGCACTGGCGCGGCAGCGTGGCCAT  
TCTGCAGAAGTGGCTCAAGGGCAGGTACAAGCCAGTCAAGTACGGCCAGTGTGGGTCTTCGCCGGAGTC  
CTGTGCACAGTCTCAGGTGCTTGGGGATAGCCACACGGGTGCTGTCCAACCTCAACTCAGCCCACGACA  
CAGACCAGAACCTGAGTGTGGACAAATACGTGGACTCCTTCGGGCGGACCTGGAGGACCTGACAGAAGA  
CAGCATGTGGAATTTCCATGTCTGGAATGAGAGCTGGTTTGGCCGGCAGGACCTAGGCCCTCTTACAAT  
GGCTGGCAGGTTCTGGATGCCACCCCCAGGAGGAGTGAAGGTGTGTTCCGGTGGCCCGCCAGCCTCAG  
TCACCCCATCCGCGAGGGTGTGTGACCTGGCTCAGATGGCCCTTCGTGTTTGGGAGGTCAACGC  
CGACTACATCACCTGGCTGTGGCACGAGGATGAGAGCCGGGAGCGTGTATACTCAAACACGAAGAAGATT  
GGGAGATGCATCAGCACCAAGGCGGTGGCAGTACTCCCGCTGGACATCACTGACCTCTACAAGTATC  
CGGAAGGGTCCCGAAAGAGAGGCGAGGTGTACAGCAAGGCGGTGAACAGGCTGTTCCGGCTGGAAGCCTC  
TGGAAGGAGAATCTGGATCCGACAGGCTGGGGTCTGCTCTGGCGTGACGACCTCCTGGAGCCTGCC  
ACCAAGCCAGCATCGCTGGCAAGTTCAAGGTGCTAGAGCCTCCCATGCTGGGCCACGACCTGAGACTGG  
CCCTGTGCTTGGCCAACCTCACCTCCCGGGCCAGCGGTGAGGGTCAACCTGAGCGGTGCCACCATCCT  
CTATACCCGCAAGCCAGTGGCAGAGATCCTGCATGAATCCACGCCGTGAGGCTGGGCGCCGAAGAAGAG  
AAGAGAATCCCAATTACAATATCTTACTCTAAGTATAAAGAAGACCTGACAGAGGACAAGAAGATCCTGT  
TGGCTGCCATGTGCTTGTACCAAAGGAGAGAAGCTTCTGGTGGAGAAGGACATTACTCTAGAGGACTT  
CATCCACATCAAGTTCTGGGCCAGCCATGGTGGGAGTGGCAGTTACAGTGGAAAGTGCAGTAGTCAAC  
CCCCTCATAGAGAGAGTGAAGGACTGTGCGCTGATGGTGGAGGGCAGCGCCCTTCCAGGAACAGCTCA  
GCATCGACGTGCCTACCTGGAGCCTCAGGAGAGGGCCTCAGTCCAGTTTGCATCACCCCTCCAAAAG  
TGGCCCAAGGCAGCTGCAGGTGGACCTTGTAAAGCCCTCACTTCCCGGACATCAAGGGCTTGTGATCGTC  
CATGTGGCCACTGCCAAG

ACGCGTACGCGCGGCTCGAGCAGAACTCATCTCAGAAGAGGATCTGGCAGCAAATGATATCCTGGATT  
ACAAGGATGACGACGATAAGGTTTAA

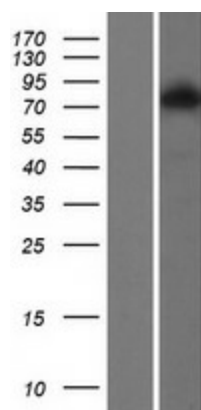


<b>Components:</b>	The ORF clone is ion-exchange column purified and shipped in a 2D barcoded Matrix tube containing 10ug of transfection-ready, dried plasmid DNA (reconstitute with 100 ul of water).
<b>Reconstitution Method:</b>	<ol style="list-style-type: none"><li>1. Centrifuge at 5,000xg for 5min.</li><li>2. Carefully open the tube and add 100ul of sterile water to dissolve the DNA.</li><li>3. Close the tube and incubate for 10 minutes at room temperature.</li><li>4. Briefly vortex the tube and then do a quick spin (less than 5000xg) to concentrate the liquid at the bottom.</li><li>5. Store the suspended plasmid at -20°C. The DNA is stable for at least one year from date of shipping when stored at -20°C.</li></ol>
<b>RefSeq:</b>	<a href="#">NM_198994.3</a>
<b>RefSeq Size:</b>	2292 bp
<b>RefSeq ORF:</b>	2121 bp
<b>Locus ID:</b>	343641
<b>UniProt ID:</b>	<a href="#">O95932</a>
<b>Cytogenetics:</b>	20p13
<b>Protein Families:</b>	Druggable Genome
<b>MW:</b>	79.1 kDa
<b>Gene Summary:</b>	The protein encoded by this gene belongs to the transglutaminase superfamily. It catalyzes the cross-linking of proteins and the conjugation of polyamines to proteins. Mutations in this gene are associated with spinocerebellar ataxia type 35 (SCA35). Alternatively spliced transcript variants encoding different isoforms have been found for this gene. [provided by RefSeq, Dec 2011]

## Product images:



Circular map for RC217931



Western blot validation of overexpression lysate (Cat# [LY404707]) using anti-DDK antibody (Cat# [TA50011-100]). Left: Cell lysates from untransfected HEK293T cells; Right: Cell lysates from HEK293T cells transfected with RC217931 using transfection reagent MegaTran 2.0 (Cat# [TT210002]).