

Product datasheet for **RC217921**

RSPO1 (NM_001038633) Human Tagged ORF Clone

Product data:

Product Type:	Expression Plasmids
Product Name:	RSPO1 (NM_001038633) Human Tagged ORF Clone
Tag:	Myc-DDK
Symbol:	RSPO1
Synonyms:	CRISTIN3; RSPO
Mammalian Cell Selection:	Neomycin
Vector:	pCMV6-Entry (PS100001)
E. coli Selection:	Kanamycin (25 ug/mL)
ORF Nucleotide Sequence:	>RC217921 representing NM_001038633 Red=Cloning site Blue=ORF Green=Tags(s)

TTTGTAAATACGACTCACTATAGGGCGGCCGGAATTCGTCGACTGGATCCGGTACCGAGGAGATCTGCC
 GCC**CGATCGCC**

ATGCGGCTTGGGCTGTGTGGTGGCCCTGGTTCTGAGCTGGACGCACCTCACCATCAGCAGCCGGGGGA
 TCAAGGGGAAAAGGCAGAGGCGGATCAGTGCCGAGGGGAGCCAGGCCTGTGCCAAAGGCTGTGAGCTCTG
 CTCTGAAGTCAACGGCTGCCTCAAGTGCTACCCAAGCTGTTTCATCCTGCTGGAGAGGAACGACATCCGC
 CAGGTGGGCGTCTGCTTGCCGCTCTGCCACCTGGATACTTCGACGCCGCAACCCGACATGAACAAGT
 GCATCAAATGCAAGATCGAGCACTGTGAGGCCTGCTTCAGCCATAACTTCTGCACCAAGTGAAGGAGGG
 CTGTGTACCTGCACAAGGGCCGCTGCTATCCAGCTTGTCCTGAGGGCTCCTCAGCTGCCAATGGCACCATG
 GAGTGCAGTAGTCTGCGCAATGTGAAATGAGCGAGTGGTCTCCGTGGGGGCCCTGCTCCAAGAAGCAGC
 AGCTCTGTGGTTTCCGGAGGGGCTCCGAGGAGCGGACACGCAGGGTGCTACATGCCCTGTGGGGGACCA
 TGCTGCCTGCTCTGACACCAAGGAGACCCGGAGGTGCACAGTGAAGGAGAGTGCCGTGTCTGAGGGGCA
 AAGAGGAGGAAGGGAGGCCAGGGCCGGCGGAGAATGCCAACAGGAACCTGGCCAGGAAGGAGAGCAAGG
 AGGCGGTGCTGGCTCTCGAAGACGCAAGGGGCAGCAACAGCAGCAGCAGCAAGGGACAGTGGGGCCACT
 CACATCTGCAGGGCCTGCC

ACGCGTACGCGGCGCTCGAGCAGAACTCATCTCAGAAGAGGATCTGGCAGCAAATGATATCCTGGATT
 ACAAGGATGACGACGATAAGGTTTAA


[View online »](#)

Protein Sequence: >RC217921 representing NM_001038633
 Red=Cloning site Green=Tags(s)

MRLGLCVVALVLSWHLTISSRGIKGKRQRRISAEGSQACAKGCELCSEVNGCLKCSPKLFILLERNDIR
 QVGVCPLPSCPPGYFDARNPDMNKCIKCKIEHCEACFSHNFCCKEGLYLHKGRCPACPEGSSAANGTM
 ECSSPAQCEMSEWSPWGPCSKKQQLCGFRRGSEERTRRVLHAPVDHAACSDTKETRRTVRRVPCPEGQ
 KRRKGGQGRRENANRNLARKEKEAGAGSRRRKGQQQQQGGTVGPLTSAGPA

TRTRPLEQKLISEEDLAANDILDYKDDDDKV

Chromatograms: https://cdn.origene.com/chromatograms/mg2569_c07.zip

Restriction Sites: SgfI-MluI

Cloning Scheme:



ACCN: NM_001038633

ORF Size: 789 bp

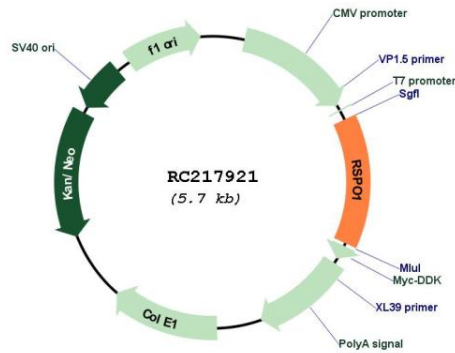
OTI Disclaimer: Due to the inherent nature of this plasmid, standard methods to replicate additional amounts of DNA in E. coli are highly likely to result in mutations and/or rearrangements. Therefore, OriGene does not guarantee the capability to replicate this plasmid DNA. Additional amounts of DNA can be purchased from OriGene with batch-specific, full-sequence verification at a reduced cost. Please contact our customer care team at custsupport@origene.com or by calling 301.340.3188 option 3 for pricing and delivery.

The molecular sequence of this clone aligns with the gene accession number as a point of reference only. However, individual transcript sequences of the same gene can differ through naturally occurring variations (e.g. polymorphisms), each with its own valid existence. This clone is substantially in agreement with the reference, but a complete review of all prevailing variants is recommended prior to use. [More info](#)

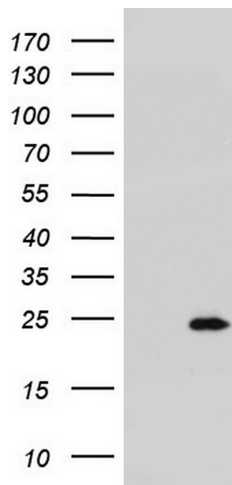
OTI Annotation: This clone was engineered to express the complete ORF with an expression tag. Expression varies depending on the nature of the gene.

Components:	The ORF clone is ion-exchange column purified and shipped in a 2D barcoded Matrix tube containing 10ug of transfection-ready, dried plasmid DNA (reconstitute with 100 ul of water).
Reconstitution Method:	<ol style="list-style-type: none"> 1. Centrifuge at 5,000xg for 5min. 2. Carefully open the tube and add 100ul of sterile water to dissolve the DNA. 3. Close the tube and incubate for 10 minutes at room temperature. 4. Briefly vortex the tube and then do a quick spin (less than 5000xg) to concentrate the liquid at the bottom. 5. Store the suspended plasmid at -20°C. The DNA is stable for at least one year from date of shipping when stored at -20°C.
Note:	Plasmids are not sterile. For experiments where strict sterility is required, filtration with 0.22um filter is required.
RefSeq:	NM_001038633.4
RefSeq Size:	2995 bp
RefSeq ORF:	792 bp
Locus ID:	284654
UniProt ID:	Q2MKA7
Cytogenetics:	1p34.3
Protein Families:	Secreted Protein
MW:	28.8 kDa
Gene Summary:	This gene encodes a secreted activator protein with two cysteine-rich, furin-like domains and one thrombospondin type 1 domain. The encoded protein is a ligand for leucine-rich repeat-containing G-protein coupled receptors (LGR proteins) and positively regulates the Wnt signaling pathway. In mice, the protein induces the rapid onset of crypt cell proliferation and increases intestinal epithelial healing, providing a protective effect against chemotherapy-induced adverse effects. Alternative splicing results in multiple transcript variants. [provided by RefSeq, Apr 2014]

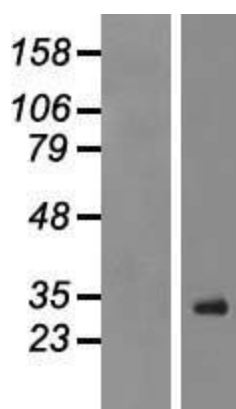
Product images:



Circular map for RC217921



HEK293T cells were transfected with the pCMV6-ENTRY control (Cat# [PS100001], Left lane) or pCMV6-ENTRY RSPO1 (Cat# RC217921, Right lane) cDNA for 48 hrs and lysed. Equivalent amounts of cell lysates (5 ug per lane) were separated by SDS-PAGE and immunoblotted with anti-RSPO1 (Cat# [TA804626]). Positive lysates [LY422005] (100ug) and [LC422005] (20ug) can be purchased separately from OriGene.



Western blot validation of overexpression lysate (Cat# [LY422005]) using anti-DDK antibody (Cat# [TA50011-100]). Left: Cell lysates from untransfected HEK293T cells; Right: Cell lysates from HEK293T cells transfected with RC217921 using transfection reagent MegaTran 2.0 (Cat# [TT210002]).