

Product datasheet for RC217918

RNF41 (NM_005785) Human Tagged ORF Clone

Product data:

Product Type:	Expression Plasmids
Product Name:	RNF41 (NM_005785) Human Tagged ORF Clone
Tag:	Myc-DDK
Symbol:	RNF41
Synonyms:	FLRF; NRDP1; SBB103
Mammalian Cell Selection:	Neomycin
Vector:	pCMV6-Entry (PS100001)
E. coli Selection:	Kanamycin (25 ug/mL)
ORF Nucleotide Sequence:	>RC217918 representing NM_005785 Red=Cloning site Blue=ORF Green=Tags(s)

TTTTGTAATACGACTCACTATAGGGCGGCCGGAATTCGTCGACTGGATCCGGTACCGAGGAGATCTGCC
GCC**CGATCGCC**

ATGGGGTATGATGTAACCCGTTTCCAGGGGATGTTGACGAAGATCTTATCTGCCCTATTTGCAGTGGAG
TCTTGGAGGAGCCAGTACAGGCACCTCATTGTGAACATGCTTTCTGCAACGCCTGCATCACCCAGTGTT
CTCTCAGCAACAGACATGTCCAGTGGACCGTAGTGTGTGACGGTCGCCCATCTGCGCCAGTACCTCGG
ATCATGCGGAACATGTTGTCAAAGCTGCAGATTGCTGTGACAACGCTGTGTTCCGGCTGTAGTCCGTTG
TCCGGCTTGACAACCTCATGTCTCACCTCAGCGACTGTGAGCACAACCCGAAGCGCCTGTGACCTGTGA
ACAGGGCTGTGGCTGGAGATGCCCAAAGATGAGCTGCCAACCATAACTGCATTAAGCACCTGCGCTCA
GTGGTACAGCAGCAGACACGCATCGCAGAGCTGGAGAAGACGTCAGCTGAACACAAACACAGCTGG
CGGAGCAGAAGCGAGACATCCAGCTGCTAAAGGCATACATGCGTGCAATCCGCAGTGTCAACCCCAACCT
TCAGAACCTGGAGGAGACAATTGAATACAACGAGATCCTAGAGTGGGTGAACTCCCTTCAGCCAGCAAGA
GTGACCCGCTGGGGAGGGATGATCTCGACTCCTGATGCTGTGCTCCAGGCTGTAATCAAGCGCTCCCTGG
TGGAGAGTGGCTGTCTGCTTCTATTGTCAACGAGCTGATTGAAAATGCCACGAGCGTAGCTGGCCCCA
GGTCTGGCCACACTAGAGACTAGACAGATGAACCGACGCTACTATGAGAACTACGTGCCAAGCGCATC
CCTGGCAAGCAGGCTGTTGTGCGGATGGCTGTGAGAACCGACATGGGGGATGACATGGTGAAGAGC
CAGGCCTTGTCATGATATTTGCGCATGGCGTGAAGAGATA

ACGCGTACGCGGCCGCTCGAGCAGAACTCATCTCAGAAGAGGATCTGGCAGCAAATGATATCCTGGATT
ACAAGGATGACGACGATAAGGTTTAA



[View online »](#)

Protein Sequence: >RC217918 representing NM_005785
Red=Cloning site Green=Tags(s)

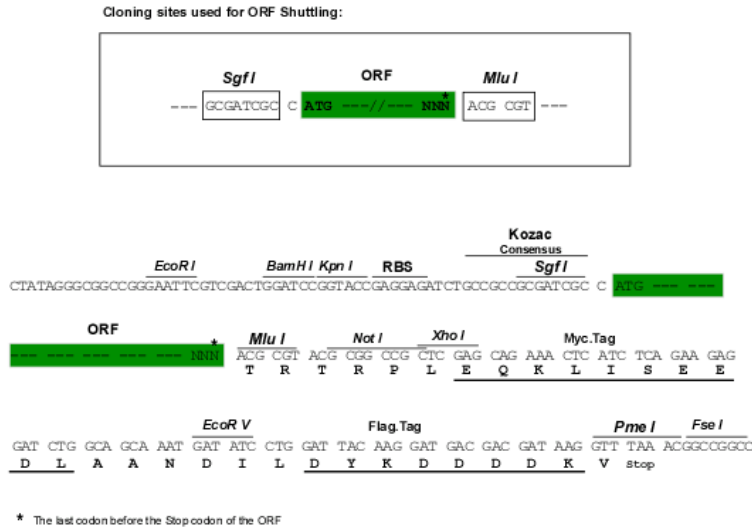
MGYDVTRFQGDVDEDL I C P I C S G V L E E P V Q A P H C E H A F C N A C I T Q W F S Q Q Q T C P V D R S V V T V A H L R P V P R
 I M R N M L S K L Q I A C D N A V F G C S A V V R L D N L M S H L S D C E H N P K R P V T C E Q G C G L E M P K D E L P N H N C I K H L R S
 V V Q Q Q T R I A E L E K T S A E H K H Q L A E Q K R D I Q L L K A Y M R A I R S V N P N L Q N L E E T I E Y N E I L E W N S L Q P A R
 V T R W G G M I S T P D A V L Q A V I K R S L V E S G C P A S I V N E L I E N A H E R S W P Q G L A T L E T R Q M N R R Y Y E N Y V A K R I
 P G K Q A V V A M A C E N Q H M G D D M V Q E P G L V M I F A H G V E E I

TRTRPLEQKLISEEDLAANDILDYKDDDDKV

Chromatograms: https://cdn.origene.com/chromatograms/mk6046_c04.zip

Restriction Sites: SgfI-MluI

Cloning Scheme:



ACCN: NM_005785

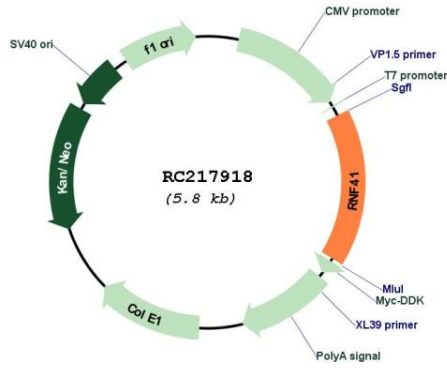
ORF Size: 951 bp

OTI Disclaimer: Due to the inherent nature of this plasmid, standard methods to replicate additional amounts of DNA in E. coli are highly likely to result in mutations and/or rearrangements. Therefore, OriGene does not guarantee the capability to replicate this plasmid DNA. Additional amounts of DNA can be purchased from OriGene with batch-specific, full-sequence verification at a reduced cost. Please contact our customer care team at custsupport@origene.com or by calling 301.340.3188 option 3 for pricing and delivery.

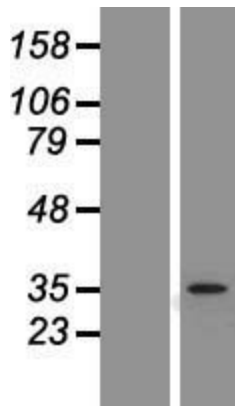
The molecular sequence of this clone aligns with the gene accession number as a point of reference only. However, individual transcript sequences of the same gene can differ through naturally occurring variations (e.g. polymorphisms), each with its own valid existence. This clone is substantially in agreement with the reference, but a complete review of all prevailing variants is recommended prior to use. [More info](#)

OTI Annotation:	This clone was engineered to express the complete ORF with an expression tag. Expression varies depending on the nature of the gene.
Components:	The ORF clone is ion-exchange column purified and shipped in a 2D barcoded Matrix tube containing 10ug of transfection-ready, dried plasmid DNA (reconstitute with 100 ul of water).
Reconstitution Method:	<ol style="list-style-type: none">1. Centrifuge at 5,000xg for 5min.2. Carefully open the tube and add 100ul of sterile water to dissolve the DNA.3. Close the tube and incubate for 10 minutes at room temperature.4. Briefly vortex the tube and then do a quick spin (less than 5000xg) to concentrate the liquid at the bottom.5. Store the suspended plasmid at -20°C. The DNA is stable for at least one year from date of shipping when stored at -20°C.
RefSeq:	NM_005785.4
RefSeq Size:	3286 bp
RefSeq ORF:	954 bp
Locus ID:	10193
UniProt ID:	Q9H4P4
Cytogenetics:	12q13.3
Domains:	RING
Protein Pathways:	Endocytosis
MW:	35.7 kDa
Gene Summary:	This gene encodes an E3 ubiquitin ligase. The encoded protein plays a role in type 1 cytokine receptor signaling by controlling the balance between JAK2-associated cytokine receptor degradation and ectodomain shedding. Alternative splicing results in multiple transcript variants. [provided by RefSeq, Jun 2011]

Product images:



Circular map for RC217918



Western blot validation of overexpression lysate (Cat# [LY417072]) using anti-DDK antibody (Cat# [TA50011-100]). Left: Cell lysates from untransfected HEK293T cells; Right: Cell lysates from HEK293T cells transfected with RC217918 using transfection reagent MegaTran 2.0 (Cat# [TT210002]).