

## Product datasheet for **RC217904**

### **GPR86 (P2RY13) (NM\_023914) Human Tagged ORF Clone**

#### Product data:

|                           |   |
|---------------------------|---|
| Product Type:             | Expression Plasmids   |
| Product Name:             | GPR86 (P2RY13) (NM_023914) Human Tagged ORF Clone   |
| Tag:                      | Myc-DDK   |
| Symbol:                   | GPR86   |
| Synonyms:                 | FKSG77; G-protein coupled receptor 94; GPCR1; GPCR1, GPR86, GPR94, P2Y13, SP174, FKSG77; GPR86; GPR94; G protein-coupled receptor 86; P2Y13; P2Y purinoceptor 13; purinergic receptor P2Y, G-protein coupled, 13; SP174 |
| Mammalian Cell Selection: | Neomycin  |
| Vector:                   | pCMV6-Entry (PS100001)  |
| E. coli Selection:        | Kanamycin (25 ug/mL)  |
| ORF Nucleotide Sequence:  | >RC217904 representing NM_023914<br>Red=Cloning site Blue=ORF Green=Tags(s)   |

TTTTGTAATACGACTCACTATAGGGCGGCCGGAATTCGTCGACTGGATCCGGTACCGAGGAGATCTGCC  
GCC**GCGATCGCC**

ATGAACACCACAGTGATGCAAGGCTTCAACAGATCTGAGCGGTGCCCCAGAGACTCGGATAGTACAGC  
TGGTATCCCAGCCCTACACAGTGGTTTTCTTGACCGCATCTGCTGAATACTTTGGCTCTGTGGGT  
GTTTGTTACATCCCAGCTCCTCCACCTTCATCATCTACCTCAAAAACCTTTGGTGGCCGACTTGATA  
ATGACTCATGCTTCTTTCAAATCCTCTGACTCACACCTGGCACCTGGCAGCTCAGAGCTTTTG  
TGTGTCGTTTTCTTCGGTGATTTTTATGAGACCATGTATGTGGGCATCGTGTGTTAGGGCTCATAGC  
CTTTGACAGATTCCTCAAGATCATCAGACCTTTGAGAAATATTTTTCTAAAAAACCTGTTTTGCAAAA  
ACGGTCTCAATCTTCATCTGGTTCTTTTGTCTTCATCTCCCTGCCAAATATGATCTTGAGCAACAAGG  
AAGCAACACCATCGTCTGTGAAAAAGTGTGCTTCTTAAAGGGCCTCTGGGGCTGAAATGGCATCAAT  
GGTAAATAACATATGCCAGTTTATTTTCTGGACTGTTTTATCCTAATGCTTGTGTTTTATGTGGTTATT  
GCAAAAAAAGTATATGATTCTTATAGAAAGTCCAAAAGTAAAGGACAGAAAAACAACAAAAGCTGGAAG  
GCAAAAGTATTTGTTGTCGTGGCTGTCTTTTGTGTGTTTTGCTCCATTTTCAATTTGCCAGAGTTCCATA  
TACTCACAGTCAAACCAACAATAAGACTGACTGTAGACTGCAAAATCAACTGTTTATTGCTAAAGAAACA  
ACTCTCTTTTGGCAGCAACTAACATTTGTATGGATCCCTTAATATACATATTCTTATGTAAAAAATTC  
CAGAAAAGCTACCATGTATGCAAGGGAGAAAGACCACAGCATCAAGCCAAGAAAATCATAGCAGTCAGAC  
AGACAACATAACCTTAGGC

**ACGCGT**ACGCGGCCGCTCGAGCAGAAACTCATCTCAGAAGAGGATCTGGCAGCAAATGATATCTGGATT  
ACAAGGATGACGACGATAAGGTTTAA



[View online >](#)

**Protein Sequence:** >RC217904 representing NM\_023914  
 Red=Cloning site Green=Tags(s)

MNTTVMQGFNRSERCPRDTRIVQLVFPALYTVVFLTGILLNLTALWVVFHIPPSSSTFIIYLKNTLVADLI  
 MTLMLPFKILSDSHLAPWQLRAFVCRFSSVIFYETMYVIGIVLLGLIAFDRFLKIIIRPLRNIFLKKPVFAK  
 TVSIFIWFLLFFISLPMILSNKEATPSSVKKCASLKGPLGLKWHQMVNNICQFIFWTVFVILMLVFYVVI  
 AKKVYDSYRKS SKDRKNNKLEGVFVVAVFVCFAPFHFARVPYTHSQTNNTDCRLQNLFI AKET  
 TLFLAATNICMDPLIYIFLCKKFTEKLPCMQRKTTASSQENHSSQTDNITLG

TRTRPLEQKLISEEDLAANDILDYKDDDDKV

**Chromatograms:** [https://cdn.origene.com/chromatograms/mk6106\\_d02.zip](https://cdn.origene.com/chromatograms/mk6106_d02.zip)

**Restriction Sites:** SgfI-MluI

**Cloning Scheme:**

Cloning sites used for ORF Shuttling:



\* The last codon before the Stop codon of the ORF

**ACCN:** NM\_023914

**ORF Size:** 999 bp

**OTI Disclaimer:** The molecular sequence of this clone aligns with the gene accession number as a point of reference only. However, individual transcript sequences of the same gene can differ through naturally occurring variations (e.g. polymorphisms), each with its own valid existence. This clone is substantially in agreement with the reference, but a complete review of all prevailing variants is recommended prior to use. [More info](#)

**OTI Annotation:** This clone was engineered to express the complete ORF with an expression tag. Expression varies depending on the nature of the gene.

**Components:** The ORF clone is ion-exchange column purified and shipped in a 2D barcoded Matrix tube containing 10ug of transfection-ready, dried plasmid DNA (reconstitute with 100 ul of water).

**Reconstitution Method:**

1. Centrifuge at 5,000xg for 5min.
2. Carefully open the tube and add 100ul of sterile water to dissolve the DNA.
3. Close the tube and incubate for 10 minutes at room temperature.
4. Briefly vortex the tube and then do a quick spin (less than 5000xg) to concentrate the liquid at the bottom.
5. Store the suspended plasmid at -20°C. The DNA is stable for at least one year from date of shipping when stored at -20°C.

**RefSeq:** [NM\\_023914.1](#)

**RefSeq Size:** 2858 bp

**RefSeq ORF:** 1001 bp

**Locus ID:** 53829

**Cytogenetics:** 3q25.1

**Domains:** 7tm\_1

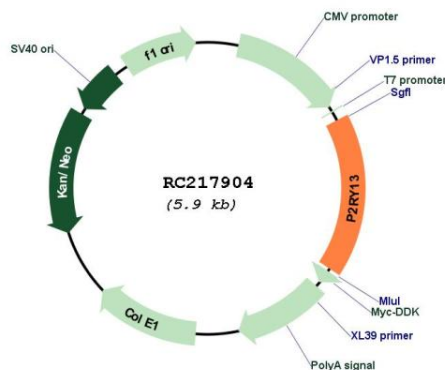
**Protein Families:** Druggable Genome, GPCR, Transmembrane

**Protein Pathways:** Neuroactive ligand-receptor interaction

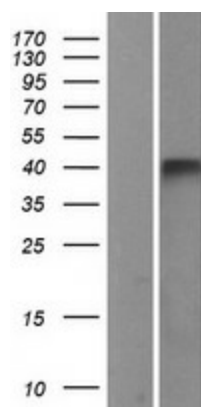
**MW:** 38.9 kDa

**Gene Summary:** The product of this gene belongs to the family of G-protein coupled receptors. This family has several receptor subtypes with different pharmacological selectivity, which overlaps in some cases, for various adenosine and uridine nucleotides. This receptor is activated by ADP. [provided by RefSeq, Sep 2008]

### Product images:



Circular map for RC217904



Western blot validation of overexpression lysate (Cat# [LY402959]) using anti-DDK antibody (Cat# [TA50011-100]). Left: Cell lysates from untransfected HEK293T cells; Right: Cell lysates from HEK293T cells transfected with RC217904 using transfection reagent MegaTran 2.0 (Cat# [TT210002]).