

Product datasheet for RC217903L1

Phospholipase C beta 4 (PLCB4) (NM_182797) Human Tagged Lenti ORF Clone

Product data:

Product Type:	Expression Plasmids
Product Name:	Phospholipase C beta 4 (PLCB4) (NM_182797) Human Tagged Lenti ORF Clone
Tag:	Myc-DDK
Symbol:	Phospholipase C beta 4
Synonyms:	ARCND2; PI-PLC
Mammalian Cell Selection:	None
Vector:	pLenti-C-Myc-DDK (PS100064)
E. coli Selection:	Chloramphenicol (34 ug/mL)
ORF Nucleotide Sequence:	The ORF insert of this clone is exactly the same as(RC217903).
Restriction Sites:	SgfI-MluI
Cloning Scheme:	

Cloning sites used for ORF Shuttling:



* The last codon before the Stop codon of the ORF.

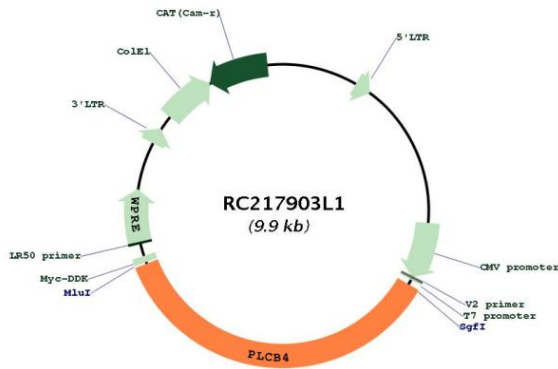
ACCN:	NM_182797
ORF Size:	3525 bp



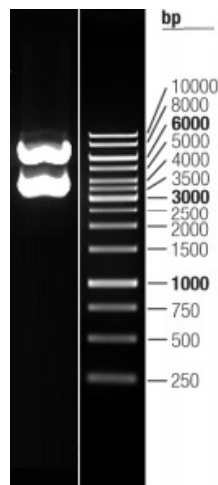
[View online >](#)

OTI Disclaimer:	The molecular sequence of this clone aligns with the gene accession number as a point of reference only. However, individual transcript sequences of the same gene can differ through naturally occurring variations (e.g. polymorphisms), each with its own valid existence. This clone is substantially in agreement with the reference, but a complete review of all prevailing variants is recommended prior to use. More info
OTI Annotation:	This clone was engineered to express the complete ORF with an expression tag. Expression varies depending on the nature of the gene.
Components:	The ORF clone is ion-exchange column purified and shipped in a 2D barcoded Matrix tube containing 10ug of transfection-ready, dried plasmid DNA (reconstitute with 100 ul of water).
Reconstitution Method:	<ol style="list-style-type: none">1. Centrifuge at 5,000xg for 5min.2. Carefully open the tube and add 100ul of sterile water to dissolve the DNA.3. Close the tube and incubate for 10 minutes at room temperature.4. Briefly vortex the tube and then do a quick spin (less than 5000xg) to concentrate the liquid at the bottom.5. Store the suspended plasmid at -20°C. The DNA is stable for at least one year from date of shipping when stored at -20°C.
RefSeq:	NM_182797.1
RefSeq Size:	5509 bp
RefSeq ORF:	3528 bp
Locus ID:	5332
UniProt ID:	Q15147
Cytogenetics:	20p12.3-p12.2
Protein Families:	Druggable Genome
Protein Pathways:	Alzheimer's disease, Calcium signaling pathway, Chemokine signaling pathway, Gap junction, GnRH signaling pathway, Huntington's disease, Inositol phosphate metabolism, Long-term depression, Long-term potentiation, Melanogenesis, Metabolic pathways, Phosphatidylinositol signaling system, Vascular smooth muscle contraction, Wnt signaling pathway
MW:	134.3 kDa
Gene Summary:	The protein encoded by this gene catalyzes the formation of inositol 1,4,5-trisphosphate and diacylglycerol from phosphatidylinositol 4,5-bisphosphate. This reaction uses calcium as a cofactor and plays an important role in the intracellular transduction of many extracellular signals in the retina. Multiple transcript variants encoding different isoforms have been found for this gene. [provided by RefSeq, Feb 2010]

Product images:



Circular map for RC217903L1



Double digestion of RC217903L1 using SgfI and MluI