

Product datasheet for **RC217900**

RAB27A (NM_183234) Human Tagged ORF Clone

Product data:

Product Type: Expression Plasmids
Product Name: RAB27A (NM_183234) Human Tagged ORF Clone
Tag: Myc-DDK
Symbol: RAB27A
Synonyms: GS2; HsT18676; RAB27; RAM
Vector: pCMV6-Entry (PS100001)
E. coli Selection: Kanamycin (25 ug/mL)
Cell Selection: Neomycin
ORF Nucleotide Sequence: >RC217900 ORF sequence
Red=Cloning site Blue=ORF Green=Tags(s)

TTTTGTAATACGACTCACTATAGGGCGGCCGGAATTCGTCGACTGGATCCGGTACCGAGGAGATCTGCC
GCC**CGGATCGCC**

ATGTCTGATGGAGATTATGATTACCTCATCAAGTTTTAGCTTTGGGAGACTCTGGTGTAGGAAGACCA
GTGTACTTTACCAATATACAGATGGTAAATTTAACTCAAATTTATCACAAAGTGGGCATTGATTTTCAG
GGAAAAAAGAGTGGTGTACAGAGCCAGTGGCCGGATGGAGCCACTGGCAGAGCCAGAGAATCCACCTG
CAGTTATGGGACACAGCAGGGCAGGAGAGGTTTCGTAGCTTAACGACAGCGTTCTTCAGAGATGCTATGG
GTTTTCTTCTACTTTTTGATCTGACAAATGAGCAAAGTTTCTCAATGTCAGAACTGGATAAGCCAGCT
ACAGATGCATGCATATTGTGAAAACCCAGATATAGTGCTGTGGAAACAAGAGTGATCTGGAGGACCAG
AGAGTAGTGAAAGAGGAGGAAGCCATAGCACTCGCAGAGAAAATATGGAATCCCCTACTTTGAAACTAGTG
CTGCCAATGGGACAAACATAAGCCAAGCAATTGAGATGCTTCTGGACCTGATAATGAAGCGAATGGAACG
GTGTGTGGACAAGTCCTGGATTCCTGAAGGAGTGGTGCATCAAATGGTCATGCCTCTACGGATCAGTTA
AGTGAAGAAAAGGAGAAAAGGGGCATGTGGCTGT

ACGCGTACGCGGCCGCTCGAGCAGAACTCATCTCAGAAGAGGATCTGGCAGCAAATGATATCCTGGATT
ACAAGGATGACGACGATAAGGTTTAA



[View online »](#)

Protein Sequence: >RC217900 protein sequence
Red=Cloning site Green=Tags(s)

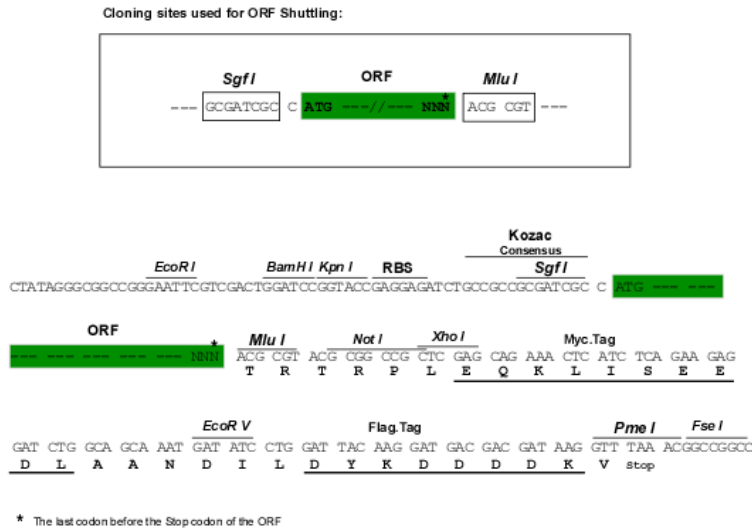
MSDGDYDYLKFLALGDSGVGKTSVLYQYTDGKFNKSFITTVGIDFREKRVVYRASGPDGATGRGQRIHL
 QLWDTAGQERFRSLTTAFFRDAMGFLLLFDLTNEQSFLNVRNWI SQLQMHAYCENPDIVLCGNKSDLEDQ
 RVVKEEEAIALAEKYGIPYFETSAANGTNISQAIEMLLDLIMKRMERCVDKSWIPEGVVRNSNGHASTDQL
 SEEKEKGACGC

TRTRPLEQKLISEEDLAANDILDYKDDDDKV

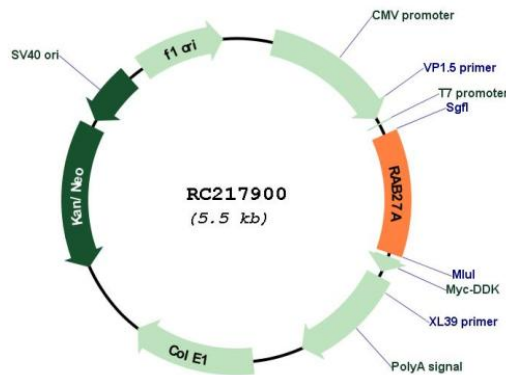
Chromatograms: https://cdn.origene.com/chromatograms/mk6470_c02.zip

Restriction Sites: Sgfl-MluI

Cloning Scheme:



Plasmid Map:

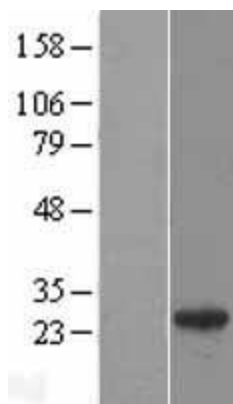


ACCN: NM_183234

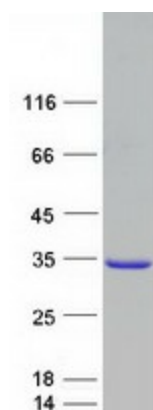
ORF Size: 663 bp

OTI Disclaimer:	The molecular sequence of this clone aligns with the gene accession number as a point of reference only. However, individual transcript sequences of the same gene can differ through naturally occurring variations (e.g. polymorphisms), each with its own valid existence. This clone is substantially in agreement with the reference, but a complete review of all prevailing variants is recommended prior to use. More info
OTI Annotation:	This clone was engineered to express the complete ORF with an expression tag. Expression varies depending on the nature of the gene.
Components:	The ORF clone is ion-exchange column purified and shipped in a 2D barcoded Matrix tube containing 10ug of transfection-ready, dried plasmid DNA (reconstitute with 100 ul of water).
Reconstitution Method:	<ol style="list-style-type: none">1. Centrifuge at 5,000xg for 5min.2. Carefully open the tube and add 100ul of sterile water to dissolve the DNA.3. Close the tube and incubate for 10 minutes at room temperature.4. Briefly vortex the tube and then do a quick spin (less than 5000xg) to concentrate the liquid at the bottom.5. Store the suspended plasmid at -20°C. The DNA is stable for at least one year from date of shipping when stored at -20°C.
RefSeq:	NM_183234.2
RefSeq Size:	3455 bp
RefSeq ORF:	666 bp
Locus ID:	5873
UniProt ID:	P51159
Cytogenetics:	15q21.3
Protein Families:	Druggable Genome
MW:	24.9 kDa
Gene Summary:	The protein encoded by this gene belongs to the small GTPase superfamily, Rab family. The protein is membrane-bound and may be involved in protein transport and small GTPase mediated signal transduction. Mutations in this gene are associated with Griscelli syndrome type 2. Alternative splicing occurs at this locus and four transcript variants encoding the same protein have been identified. [provided by RefSeq, Jul 2008]

Product images:



Western blot validation of overexpression lysate (Cat# [LY405231]) using anti-DDK antibody (Cat# [TA50011-100]). Left: Cell lysates from untransfected HEK293T cells; Right: Cell lysates from HEK293T cells transfected with [RC223511] using transfection reagent MegaTran 2.0 (Cat# [TT210002]).



Coomassie blue staining of purified RAB27A protein (Cat# [TP317900]). The protein was produced from HEK293T cells transfected with RAB27A cDNA clone (Cat# RC217900) using MegaTran 2.0 (Cat# [TT210002]).