

Product datasheet for **RC217899**

PTP epsilon (PTPRE) (NM_130435) Human Tagged ORF Clone

Product data:

Product Type:	Expression Plasmids
Product Name:	PTP epsilon (PTPRE) (NM_130435) Human Tagged ORF Clone
Tag:	Myc-DDK
Symbol:	PTP epsilon
Synonyms:	HPTPE; PTPE; R-PTP-EPSILON
Mammalian Cell Selection:	Neomycin
Vector:	pCMV6-Entry (PS100001)
E. coli Selection:	Kanamycin (25 ug/mL)



[View online »](#)

ORF Nucleotide
Sequence:

>RC217899 representing NM_130435
Red=Cloning site Blue=ORF Green=Tags(s)

TTTTGTAATACGACTCACTATAGGGCGGCCGGAATTCGTGCGACTGGATCCGGTACCGAGGAGATCTGCC
GCC**CGGATCGCC**

ATGAGCAACAGGAGTAGCTTTCCCGGCTCACCTGGTTCAGGAAGCAGAGGAAAGCTGTGGTCAGCACCA
GCGACAAGAAGATGCCAACGGAATCTTGAGGAGCAAGAGCAGCAAAGGGTGATGCTGCTCAGCAGGTC
ACCCTCAGGGCCCAAGAAGTATTTCCCATCCCCGTGGAGCACCTGGAGGAGGAGATCCGTATCAGATCC
GCCGACGACTGCAAGCAGTTTCGGGAGGAGTTCAACTCATTGCCATCTGGACACATAAAGGAACTTTG
AACTGGCAAATAAAGAAGAAAACAGAGAAAAAACAGATATCCCAACATCCTTCCCAATGACCATTCTAG
GGTGATTCTGAGCCAACGGATGGAATTCCTGTTGACTACATCAATGCTTCTACATAGATGGTTAC
AAAGAGAAGAATAAATTCATAGCAGCTCAAGGTCCTAACAGGAAACGGTTAACGACTTCTGGAGAATGG
TCTGGGAGCAAAGTCTGCGACCATCGTCATGTTAACAACTTGAAGAAAGGAAAGAGGAAAAGTGCCA
TCAGTACTGGCCGACCAAGGCTGCTGGACCTATGGAAACATCCGGGTGTGCGTGGAGGACTGCGTGTT
TTGGTTCGACTACACCATCCGGAAGTTCGCATACAGCCACAGCTCCCGACGGCTGCAAAGCCCCAGGC
TGGTCTCACAGCTGCACTTCACCAGCTGGCCCGACTTCGGAGTGCCTTTTACCCCATTTGGGATGCTGAA
GTTCTCAAGAAAGTAAAGACGCTCAACCCCGTGCACGCTGGGCCATCGTGGTCCACTGTAGCGCGGGC
GTGGGCCGGACGGGCACCTTCATTGTGATCGATGCCATGATGGCCATGATGCACGCGGAGCAGAAGGTGG
ATGTGTTTGAATTTGTGCTCGAATCCGTAATCAGCGCCCTCAGATGGTTCAAACGGATATGCAGTACAC
GTTTCATCTACCAAGCCTTACTCGAGTACTACCTACGGGGACACAGAGCTGGACGTGCTCCTCCCTGGAG
AAGCACCTGCAGACCATGCACGGCACCACCACCACTTCGACAAGATCGGGCTGGAGGAGGAGTTCAGGA
AATTGACAAATGTCCGGATCATGAAGGAGAACATGAGGACGGGCAACTTGCCGGCAAACATGAAGAAGGC
CAGGGTCCATCCAGATCATCCCGTATGACTTCAACCGAGTGATCCTTTCCATGAAAAGGGGTCAAGAATAC
ACAGACTACATCAACGCATCCTTCATAGACGGCTACCGACAGAAGGACTATTTTCATCGCCACCCAGGGC
CACTGGCACACACGGTTGAGGACTTCTGGAGGATGATCTGGGAATGGAATCCCACACTATCGTGATGCT
GACGGAGGTGCAGGAGAGAGCAGGATAAATGCTACCAGTATTGGCCAACCGAGGGCTCAGTTACTCAT
GGAGAAATAACGATTGAGATAAAGAATGATACCCTTTCAGAAGCCATCAGTATACGAGACTTTCTGGTCA
CTCTCAATCAGCCCCAGGCCCGCCAGGAGGAGCAGGTCAGTGTGCGCCAGTTTCACTTCCACGGCTG
GCCTGAGATCGGGATTCGCGCCGAGGGCAAAGGCATGATTGACCTCATCGCAGCCGTGCAGAAGCAGCAG
CAGCAGACAGGCAACCACCCATCACCGTGCAGTGCAGTCCGGAGCTGGCGAACAGGTACATTTCATAG
CCCTCAGCAACATTTTGGAGCGAGTAAAAGCCGAGGGACTTTTAGATGTATTTCAAGCTGTGAAGAGTTT
ACGACTTCAGAGACCACATATGGTGAAACCCTGGAACAGTATGAATTCTGCTACAAAGTGGTACAAGAT
TTTATTGATATATTTCTGATTATGCTAATTTCAA

ACGCGTACGCGGCCGCTCGAGCAGAACTCATCTCAGAAGAGGATCTGGCAGCAAATGATATCCTGGATT
ACAAGGATGACGACGATAAGGTTTAA

Reconstitution Method:

1. Centrifuge at 5,000xg for 5min.
2. Carefully open the tube and add 100ul of sterile water to dissolve the DNA.
3. Close the tube and incubate for 10 minutes at room temperature.
4. Briefly vortex the tube and then do a quick spin (less than 5000xg) to concentrate the liquid at the bottom.
5. Store the suspended plasmid at -20°C. The DNA is stable for at least one year from date of shipping when stored at -20°C.

RefSeq: [NM_130435.5](#)

RefSeq Size: 5002 bp

RefSeq ORF: 1929 bp

Locus ID: 5791

UniProt ID: [P23469](#)

Cytogenetics: 10q26.2

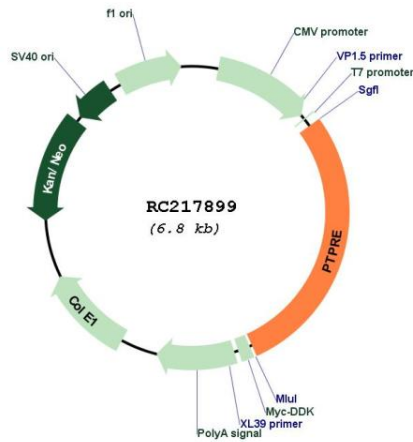
Domains: Y_phosphatase, PTPc_motif

Protein Families: Druggable Genome, Phosphatase, Transmembrane

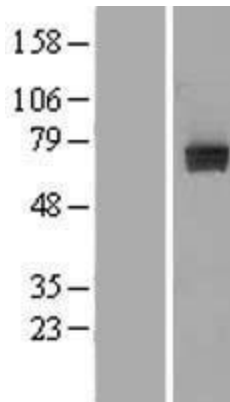
MW: 74.4 kDa

Gene Summary: The protein encoded by this gene is a member of the protein tyrosine phosphatase (PTP) family. PTPs are known to be signaling molecules that regulate a variety of cellular processes including cell growth, differentiation, mitotic cycle, and oncogenic transformation. Several alternatively spliced transcript variants of this gene have been reported, at least two of which encode a receptor-type PTP that possesses a short extracellular domain, a single transmembrane region, and two tandem intracytoplasmic catalytic domains; another one encodes a PTP that contains a distinct hydrophilic N-terminus, and thus represents a nonreceptor-type isoform of this PTP. Studies of the similar gene in mice suggested the regulatory roles of this PTP in RAS related signal transduction pathways, cytokine-induced SATA signaling, as well as the activation of voltage-gated K⁺ channels. [provided by RefSeq, Oct 2015]

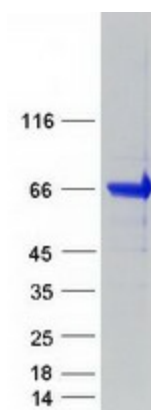
Product images:



Circular map for RC217899



Western blot validation of overexpression lysate (Cat# [LY408966]) using anti-DDK antibody (Cat# [TA50011-100]). Left: Cell lysates from untransfected HEK293T cells; Right: Cell lysates from HEK293T cells transfected with RC217899 using transfection reagent MegaTran 2.0 (Cat# [TT210002]).



Coomassie blue staining of purified PTPRE protein (Cat# [TP317899]). The protein was produced from HEK293T cells transfected with PTPRE cDNA clone (Cat# RC217899) using MegaTran 2.0 (Cat# [TT210002]).