

Product datasheet for RC217896

TRPM3 (NM_206945) Human Tagged ORF Clone

Product data:

Product Type:	Expression Plasmids
Product Name:	TRPM3 (NM_206945) Human Tagged ORF Clone
Tag:	Myc-DDK
Symbol:	TRPM3
Synonyms:	GON-2; LTRPC3; MLSN2
Vector:	pCMV6-Entry (PS100001)
E. coli Selection:	Kanamycin (25 ug/mL)
Cell Selection:	Neomycin
ORF Nucleotide Sequence:	>RC217896 representing NM_206945 Red=Cloning site Blue=ORF Green=Tags(s)

TTTTGTAATACGACTCACTATAGGGCGCCGGAATTCGTCGACTGGATCCGGTACCGAGGAGATCTGCC
GCC**CGATCGCC**

ATGTATGTGCGAGTATCTTTTGATACAAAACCTGATCTCCTCTTACACCTGATGACCAAGGAATGGCAGT
TGGAGCTTCCCAAGCTTCTCATCTCTGTCCATGGGGCCTGCAGAACTTTGAACTCCAGCCAAAACCTCAA
GCAAGTCTTTGGAAAGGGCTCATCAAAGCAGCAATGACAACCTGGAGCGTGGATATTCACCTGGAGGGTT
AACACAGGTGTTATTCGTCATGTTGGCGATGCCTTGAAGGATCATGCCTCTAAGTCTCGAGGAAAGATAT
GCACCATAGGTATTGCCCTGGGGAATTGTGGAAAACAGGAGGACCTCATTGGAAGAGATGTTGTCCG
GCCATACCAGACCATGTCCAATCCCATGAGCAAGCTCACTGTTCTCAACAGCATGCATTCCTCACTTCACT
CTGGCTGACAACGGGACCACTGGAAAATATGGAGCAGAGGTGAACTTCGAAGACAACCTGGAAAAGCATA
TTTCACTCCAGAAGATAAACACAAGAATCGGTCAAGGTGTTCTGTGGTGGCACTCATAGTGAAGGAGG
ACCCAATGTGATCTCGATTGTTTTGGAGTACCTTCGAGACACCCCTCCCGTCCAGTGGTGTCTGTGAT
GGGAGTGGACGGGCATCGGACATCCTGGCCTTTGGCATAAATACTCAGAAGAAGCGGCACTGATAAATG
AATCTTTGAGGGACAGCTGTTGGTACTATACAGAAGCTTTCACATACACTCGAACCAAGCTCAGCA
TCTGTTTATCATCCTCATGGAGTGCATGAAGAAGAAGGAATTGATTACGGTATTTTCGGATGGGATCAGAA
GGACACCAGGACATTGATTTGGCTATCCTGACAGCTTTACTCAAAGGAGCCAATGCCTCGCCCCAGACC
AACTGAGCTTAGCTTTAGCCTGGAACAGAGTCGACATCGCTCGCAGCCAGATCTTTATTTACGGGCAACA
GTGGCCGGTGGGATCTCTGGAGCAAGCCATGTTGGATGCCTTAGTTCTGGACAGAGTGGATTTTGTGAAA
TTACTCATAGAGAATGGAGTAAGCATGCACCGTTTTCTCACCATCTCCAGACTAGAGGAATTGTACAATA
CGAGACATGGGCCCTCAAATACATTGTACCACTGGTCAGGGATGTCAAAAAGCGAGAGTATCCAGGTTT
CGGTTGGATCTATTTAAGGGGAACCTGCCCCAGACTACAGAATCAGCCTGATTGACATCGGCCTGGT
ATCGAGTACCTGATGGGCGGGCTTATCGCTGCAACTACACGCGCAAGCGCTTCCGACCTCTACCACA
ACCTCTTCGGCCCAAGAGGGATGATATTCCTTGAGGGCAGGAAGAAAGACAACCAAGAACCTGAAGA
AGAGGTGGACATTGACTTGGATGATCCTGAGATCAACCACTTCCCTTCCCTTCCATGAGCTCATGGTG
TGGGCTGTTCTCATGAAGCGGCAGAAGATGGCCCTGTTCTTCTGGCAGCACGGTGAAGGAGCCATGGCCA



[View online »](#)

AGGCCCTGGTGGCCTGCAAGCTCTGCAAAGCCATGGCTCATGAGGCCTCTGAGAACGACATGGTTGACGA
CATTTCAGGAGCTGAATCACAAATCCAGAGACTTTGGCCAGCTGGCTGTGGAGCTCCTGGACAGTCC
TACAAGCAGGACGAACAGCTGGCCATGAACTGCTGACGTATGAGCTGAAGAACTGGAGCAACGCCACGT
GCCTGCAGCTTGGCGTGGCTGCCAAACACCGGACTTCATCGCGCACACGTGCAGCCAGATGCTGCTCAC
CGCATGTGGATGGGCCGGCTCCGCATGCGCAAGAACTCAGGCCTCAAGGTAATTCTGGGAATCTACTT
CCTCCTCAATCTCAGCTTGGAGTTCAGAACAAGACGACATGCCCTATATGTCTCAGGCCAGGAAA
TCCACCTCCAAGAGAAGGAGGCAGAAGAACCAGAGAAGCCACAAGGAAAAAGGGAAGAGGACATGGA
GCTCACAGCAATGTTGGGACGAAACAACGGGGAGTCTCCAGGAAGAAGGATGAAGAGGAAGTTCAGAGC
AAGCACCGGTTAATCCCCCTCGGCAGAAAAATCTATGAATTCTACAATGCACCCATCGTGAAGTTCTGGT
TCTACACACTGGCGTATATCGGATACCTGATGCTCTTCAACTATATCGTGTAGTGAAGTGAACGCTG
GCCGTCCACCCAGGAATGGATCGTAATCTCCTATATTTTACCCTGGGAATAGAAAAGTGAAGAGATT
CTGATGTCAGAGCCAGGGAAGTTGCTACAGAAAGTGAAGGTATGGCTGCAGGAGTACTGGAATGTCACGG
ACCTCATCGCCATCCTTCTGTTTTCTGTCGGAATGATCCTTCGTCTCCAAGACCAGCCCTCAGGAGTGA
CGGGAGGGTCACTACTCGTGAACATCATTTACTGGTATATCCGTCTCCTAGACATCTTCGGCGTGAAC
AAGTATTTGGGCCGTATGTAATGATGATTGAAAAATGATGATAGACATGATGACTTTGTCATCATT
TGCTGGTGGTTCTGATGAGCTTTGGGGTGGCCAGGCAAGCCATCCTTTTTCCCAATGAGGAGCCATCATG
GAAACTGGCCAAGAACATCTTCTACATGCCCTATTGGATGATTTATGGGGAAGTGTGGCGACAGATA
GACCTCCCTGTGGACAGAATGAGACCCGAGAGGATGGTAAAAATCCAGCTGCCTCCCTGCAAGACAG
GAGCTTGATCGTGGCGCCATCATGGCCTGCTACCTCTAGTGGCAAACATCTTGTGGTCAACCTCCT
CATTGCTGCTTTAACAATACATTTTTGAAGTAAAAATCGATATCCAACCAAGTCTGGAAGTTTCAGAGG
TATCAGCTCATGACTTTCCATGAAAGGCCAGTTCTGCCCCACCCTGATCATCTTCAGCCACATGA
CCATGATATCCAGCACCTGTGCTGCCGATGGAGGAAACAGGAGCGACCCGGATGAAAGGGACTACGG
CCTGAAACTCTTATAACCGATGATGAGCTCAAGAAAGTACATGACTTTGAAGAGCAATGCATAGAAGAA
TACTTCAGAGAAAAGGATGATCGGTTCAACTCATCTAATGATGAGAGGATACGGGTGACTTCAGAAAAGG
TGGAGAACATGTCTATGCGGCTGGAGGAAGTCAACGAGAGAGAGCACTCCATGAAGGCTTCACTCCAGAC
CGTGGACATCCGGCTGGCGCAGCTGGAAGACCTTATCGGGCGCATGGCCACGGCCCTGGAGCGCTGACA
GGTCTGGAGCGGGCCGAGTCCAACAAAAATCCGCTCGAGGACCTCGTCAGACTGCACGGACGCCCTACA
TTGTCCGTGAGAGCAGCTTCAACAGCCAGGAAGGGAACACCTTCAAGCTCCAAGAGAGTATAGACCTGC
AGGTGAGGAGACCATGTCCCAACTTCTCAACCTTAATGCCCGTATGCGAAGCCATTCTTTCTATTTCG
GTCAATATGAAAGACAAAGGTGGTATAGAAAAGTTGAAAAGTATTTTTAAAGAAAGTCCCTGAGCTAC
ACCGGGCTACTAGTTCCTACTCTGTAGCAAAGAACCCTCAAGCTCCTGCAGCCCTGCCAACACCTTGGC
CATTGTTCTGATTCAGAAAGACCATCATCGTGTATAGACATCTATGTCTCTGCTATGGATGAGCTCCAC
TGTGATATAGACCCTCTGGACAATTCCTGAAACATCCTTGGGCTGGGCGAGCCAAGCTTTTCAACTCCAG
TACCTTCCACAGCCCTTCAAGTAGTGCCTATGCAACACTTGCACCCACAGACAGACCTCCAAGCCGGAG
CATTGATTTTGGAGACATCACCTCCATGGACACTAGATCTTTTTCTTCCAGACTACACCCACCTCCAGAA
TGCCAAAACCCCTGGGACTCAGAGCCTCCGATGTACCACACCATGAGCGTTCCAAAAGTAGCCGCTACC
TAGCCACCACACCTTTCTTCTAGAAGAGGCTCCCATTTGTGAAATCTCATAGCTTTATGTTTTCCCTC
AAGGAGCTATTATGCCAACTTTGGGGTGCCTGTAAAAACAGCAGAATACACAAGTATTACAGACTGTATT
GACACAAGGTGTCAATGCCCTCAAGCAATTGCGGACAGAGCTGCCTTCCCTGGAGGCTTGGAGACA
AAGTGGAGGACTTAACTTGTGCCATCCAGAGCGAGAAGCAGAAGTCAAGTCAAGTCAAGTCAAGTCAAGT
GGAGAATGAGGCCAAAGGCCGAGACCCATTGCAATATCCTCCAGGAGGGTGATAACTCAGAGAGA
ACCCTGTCCAACAACATCACTGTTCCAAAGATAGAGCGCGCAACAGCTACTCGGAGAGGAGCCAAAGT
CGCCATATGCACACACCAGGAAGAGCTTCCATCAGTGACAACTCGACAGGACGCGGAACACAGCAAG
CCTGCGAAATCCCTTCCAGAGAAGCAAGTCTCCAAGCCGGAGGGCCGAGGGGACAGCCTGTCCATGAGG
AGACTGTCCAGAACATCGGCTTTCAAAGCTTTGAAAGCAAGCACAAAC

ACGCGTACGCGGCCGCTCGAGCAGAACTCATCTCAGAAGAGGATCTGGCAGCAATGATATCCTGGATT
ACAAGGATGACGACGATAAGGTTTAA

Protein Sequence: >RC217896 representing NM_206945
 Red=Cloning site Green=Tags(s)

MYVRVSFDTKPDLHLMTKEWQLELPKLLISVHGGLQNFELQPKLKQVFGKGLIKAAMTTGAWIFTGGV
 NTGVIHVGDALDHDASKSRGICTIGIAPWGIENQEDLIGRDVVRPYQTMSPMSKLTVLNSMHSFI
 LADNGTTGKYGAEVKLRRLQLEKHSIQKINTRIGQGVVVALIVEGGPNVISIVLEYLRDTPPVVVVCD
 GSGRASDILAFGHKYSEEGGLINESLRDQLLVTIQKFTTYTRTQAQHLFIILMECKKKELITVFRMGSE
 GHQDIDLAILTALLKGANASAPDQLSLALAWNVRVDIARSQFIYQQWPVGSLEQAMLDALVLDRVDFVK
 LLIEGVSMHRFLTISRLEELYNTRHGPSNTLYHLVRDVKREYPGFGWYFKGNLPPDYRISLIDIGLV
 IEYLMGGAYRCNYTRKFRFTLYHNLFGPKRDDIPLRRGRKTTKKREEEVDIDLDDPEINHFPPFHLMV
 WAVLMKRQKMAFFWQHGEEMAKALVACKLCKAMAHEASENDMVDDISQELNHNRSRDFGQLAVELLDQS
 YKQDEQLAMKLLTYELKNWSNATCLQLAVAAKHRDFIAHTCSQMLLTDMMGRLMRKNSGLKVLGILL
 PPSILSLEFKNKDDMPYMSQAQEIHLQEKEAEEPEKPTKEKEEEDMELTAMLGRNNGESSRKKDEEEVQS
 KHRLIPLGRKIYEFYNAPIVKFWFYTLAYIGYMLFNVIYLVKMERWPSTQEWIVISYIFTLGIEKMREI
 LMSEPGLLQKVKVWLQEYWNVTDLIAILLFVGMILRLQDQPPFRSDGRVIYCVNIIYWIYRLLDIFGVN
 KYLGPYMMIGKMMIDMYFVIIMLVLMFSGVARQAILFPNEEPSWKLAKNIFYPYWMIYGEVADQI
 DPPCGQNETREDGKIIQLPPCKTGAWIVPAIMACYLLVANILLVNLIAVFNNTFFEVKSI SNQVWKFQR
 YQLIMTFHERPVLPPPLIIFSHMTMIFQHLCCRWRKHESDPDERDYGLKLFITDDELKKVHDFEEQCIEE
 YFREKDDRFNSSNDERIRVTSERVENMSMRLEEENEREHSMKASLQTVDIRLAQLEDLIGRMATALERLT
 GLERAESNKIRSRTSSDCTDAAYIVRQSSFNSQEGNTFKLQESIDPAGEETMSPTSPTLMPRMRSHSFYS
 VNMKDKGGIEKLESIKERSLSLHRATSSHVAKEPKAPAANTLAIVPDSRRPSSCIDIYVSAMDELH
 CDIDPLDNSVNILGLGEPFSFSTPVPSTAPSSAYATLAPTRPPSRSIDFEDITSMDFRSSFSDYTHLPE
 CQNPWDSEPPMYHTIERSKSSRYLATTPFLLEEAPIVKSHSFMFSPSRSYANFGVVPVIAEYTSITDCI
 DTRCVNAPQAIADRAAFPGLGDKVEDLTCCHPEREAELSHPSSDSENEAKGRRATIAISSQEGDNSER
 TLSNNITVPKIERANSYSAEAPSAPYATRKSFSISDKLDRQRNTASLRNPFQRSKSSKPEGRGDSLMSR
 RLSRTSAFQSFESKHN

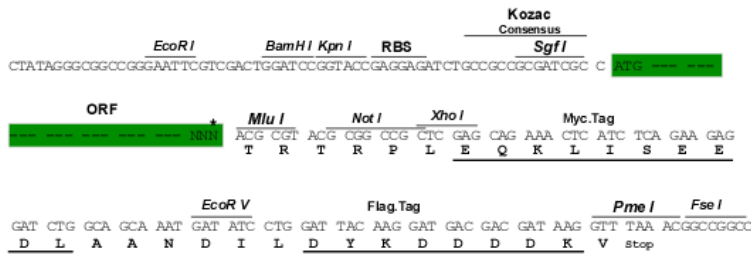
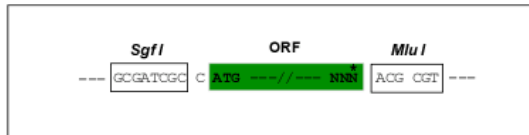
TRTRPLEQKLISEEDLAANDILDYKDDDDKV

Restriction Sites:

SgfI-MluI

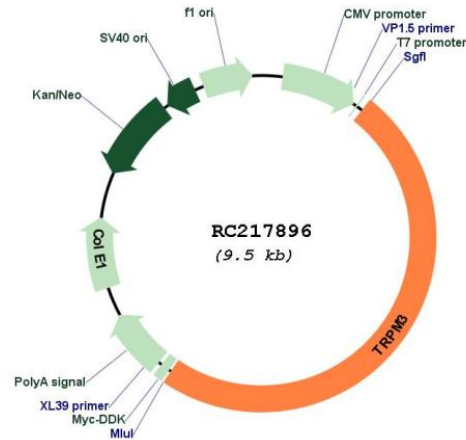
Cloning Scheme:

Cloning sites used for ORF Shuttling:



* The last codon before the Stop codon of the ORF

Plasmid Map:



ACCN: NM_206945

ORF Size: 4668 bp

OTI Disclaimer: The molecular sequence of this clone aligns with the gene accession number as a point of reference only. However, individual transcript sequences of the same gene can differ through naturally occurring variations (e.g. polymorphisms), each with its own valid existence. This clone is substantially in agreement with the reference, but a complete review of all prevailing variants is recommended prior to use. [More info](#)

OTI Annotation: This clone was engineered to express the complete ORF with an expression tag. Expression varies depending on the nature of the gene.

Components: The ORF clone is ion-exchange column purified and shipped in a 2D barcoded Matrix tube containing 10ug of transfection-ready, dried plasmid DNA (reconstitute with 100 ul of water).

Reconstitution Method:

1. Centrifuge at 5,000xg for 5min.
2. Carefully open the tube and add 100ul of sterile water to dissolve the DNA.
3. Close the tube and incubate for 10 minutes at room temperature.
4. Briefly vortex the tube and then do a quick spin (less than 5000xg) to concentrate the liquid at the bottom.
5. Store the suspended plasmid at -20°C. The DNA is stable for at least one year from date of shipping when stored at -20°C.

RefSeq:	NM_206945.5
RefSeq Size:	5946 bp
RefSeq ORF:	4671 bp
Locus ID:	80036
Cytogenetics:	9q21.12-q21.13
Protein Families:	Druggable Genome, Ion Channels: Transient receptor potential, Transmembrane
MW:	177.8 kDa
Gene Summary:	The product of this gene belongs to the family of transient receptor potential (TRP) channels. TRP channels are cation-selective channels important for cellular calcium signaling and homeostasis. The protein encoded by this gene mediates calcium entry, and this entry is potentiated by calcium store depletion. Alternatively spliced transcript variants encoding different isoforms have been identified. [provided by RefSeq, Jul 2008]