

## Product datasheet for **RC217885**

### **SNF5 (SMARCB1) (NM\_001007468) Human Tagged ORF Clone**

#### **Product data:**

Product Type:	Expression Plasmids
Product Name:	SNF5 (SMARCB1) (NM_001007468) Human Tagged ORF Clone
Tag:	Myc-DDK
Symbol:	SNF5
Synonyms:	BAF47; CSS3; hSNFS; INI1; MRD15; PPP1R144; RDT; RTPS1; Sfh1p; SNF5; SNF5L1; Snr1; SWNTS1
Mammalian Cell Selection:	Neomycin
Vector:	pCMV6-Entry (PS100001)
E. coli Selection:	Kanamycin (25 ug/mL)



[View online »](#)

**ORF Nucleotide Sequence:**

>RC217885 ORF sequence  
 Red=Cloning site Blue=ORF Green=Tags(s)

TTTTGTAATACGACTCACTATAGGGCGGCCGGGAATTCGTGACTGGATCCGGTACCGAGGAGATCTGCC  
 GCC**CGGATCGCC**

ATGATGATGATGGCGCTGAGCAAGACCTTCGGGCAGAAGCCCGTGAAGTCCAGCTGGAGGACGACGGCG  
 AGTTCTACATGATCGGCTCCGAGGTGGGAACTACCTCCGTATGTTCCGAGGTTCTCTGTACAAGAGATA  
 CCCCTCACTCTGGAGGCGACTAGCCACTGTGGAAGAGAGGAAGAAAATAGTTGCATCGTCACATGATCAC  
 GGATACACGACTCTAGCCACCAGTGTGACCCTGTTAAAAGCCTCGGAAGTGAAGAGATTCTGGATGGCA  
 ACGATGAGAAGTACAAGGCTGTGTCCATCAGCACAGAGCCCCCACCTACCTCAGGGAACAGAAGGCCAA  
 GAGGAACAGCCAGTGGGTACCCACCCTGCCAACAGCTCCACCACCTTAGATGCCGTGCCATGCTCCACA  
 ACCATCAACAGGAACCGCATGGGCCGAGACAAGAAGAGAACCTTCCCCCTTGGCTTTGATGACCATGACC  
 CAGCTGTGATCCATGAGAACGCATCTCAGCCCAGGTGCTGGTCCCCATCCGGCTGGACATGGAGATCGA  
 TGGGCAGAAGCTGCGAGACGCCCTCACCTGGAACATGAATGAGAAGTTGATGACGCTGAGATGTTTTCA  
 GAAATCCTCTGTGACGATCTGGATTTGAACCCGCTGACGTTTGTGCCAGCCATCGCCTCTGCCATCAGAC  
 AGCAGATCGAGTCTACCCACGGACAGCATCCTGGAGGACCAGTCAGACCAGCGCGTCATCATCAAGCT  
 GAACATCCATGTGGAAACATTTCCCTGGTGGACCAAGTTTGTGAGTGGGACATGTCAGAGAAGGAGAACTCA  
 CCAGAGAAGTTTGCCTGAAGCTGTGCTCGGAGCTGGGGTTGGGCGGGGAGTTTGTACCACCATCGCAT  
 ACAGCATCCGGGGACAGCTGAGCTGGCATCAGAAGACCTACGCCCTCAGCGAGAACCCTCTGCCACAGT  
 GGAGATTGCCATCCGGAACACGGGCGATGCGGACCAGTGGTGGCCACTGCTGGAGACTCTGACAGACGCT  
 GAGATGGAGAAGAAGATCCGCGACCAGGACAGGAACACGAGGCGGATGAGGCGTCTTGCCAACACGGCCC  
 CGGCTGG

**ACGCGT**ACGCGGCCGCTCGAGCAGAACTCATCTCAGAAGAGGATCTGGCAGCAAATGATATCCTGGATT  
 ACAAGGATGACGACGATAAGGTTTAA

**Protein Sequence:**

>RC217885 protein sequence  
 Red=Cloning site Green=Tags(s)

MMMALSKTFGQKPVKFQLEDDGEFYMIGSEVGNLYLRFGRSLYKRYPSLWRRLATVEERKKIVASSHDH  
 GYTTLATSVTLKASEVEEILDGNDEKYKAVSISTEPPTYLREQKAKRNSQWVPTLPNSSHHLDAVPCST  
 TINRNRMRDKKRTFPLCFDDHDPVAVIHENASQPEVLVPIRLDMEIDGQKLRDAFTWNMNEKLMTPEMFS  
 EILCDDLNLPLTFVPAIASAIRQQIESYPTDSILEDQSDQRVVIKLNIVHGNISLVDQFEWDMSEKENS  
 PEKFALKLCELGLGGEFVTIIAYSIRGQLSWHQKTYAFSENPLPTVEIAIRNTGDADQWCPLLETLDTA  
 EMEKKIRDQDRNTRRMRRLANTAPAW

**TRTRPLEQKLI**SEEDLAANDILDYKDDDDKV

**Chromatograms:**

[https://cdn.origene.com/chromatograms/mk6463\\_g11.zip](https://cdn.origene.com/chromatograms/mk6463_g11.zip)

**Restriction Sites:**

Sgfl-Mlul

**Cloning Scheme:**

Cloning sites used for ORF Shutting:



\* The last codon before the Stop codon of the ORF

**ACCN:** NM\_001007468

**ORF Size:** 1128 bp

**OTI Disclaimer:** The molecular sequence of this clone aligns with the gene accession number as a point of reference only. However, individual transcript sequences of the same gene can differ through naturally occurring variations (e.g. polymorphisms), each with its own valid existence. This clone is substantially in agreement with the reference, but a complete review of all prevailing variants is recommended prior to use. [More info](#)

**OTI Annotation:** This clone was engineered to express the complete ORF with an expression tag. Expression varies depending on the nature of the gene.

**Components:** The ORF clone is ion-exchange column purified and shipped in a 2D barcoded Matrix tube containing 10ug of transfection-ready, dried plasmid DNA (reconstitute with 100 ul of water).

**Reconstitution Method:**

1. Centrifuge at 5,000xg for 5min.
2. Carefully open the tube and add 100ul of sterile water to dissolve the DNA.
3. Close the tube and incubate for 10 minutes at room temperature.
4. Briefly vortex the tube and then do a quick spin (less than 5000xg) to concentrate the liquid at the bottom.
5. Store the suspended plasmid at -20°C. The DNA is stable for at least one year from date of shipping when stored at -20°C.

**RefSeq:** [NM\\_001007468.3](#)
**RefSeq Size:** 1690 bp

**RefSeq ORF:** 1131 bp

**Locus ID:** 6598

**UniProt ID:** [Q12824](#)

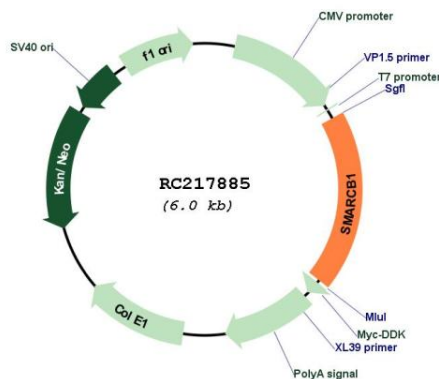
**Cytogenetics:** 22q11

**Protein Families:** Transcription Factors

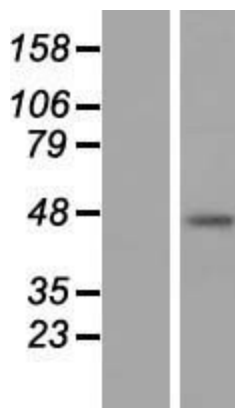
**MW:** 43.2 kDa

**Gene Summary:** The protein encoded by this gene is part of a complex that relieves repressive chromatin structures, allowing the transcriptional machinery to access its targets more effectively. The encoded nuclear protein may also bind to and enhance the DNA joining activity of HIV-1 integrase. This gene has been found to be a tumor suppressor, and mutations in it have been associated with malignant rhabdoid tumors. Alternatively spliced transcript variants have been found for this gene. [provided by RefSeq, Dec 2015]

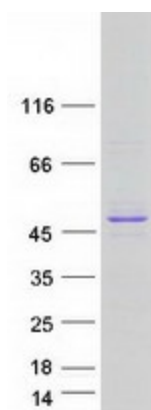
**Product images:**



Circular map for RC217885



Western blot validation of overexpression lysate (Cat# [LY423489]) using anti-DDK antibody (Cat# [TA50011-100]). Left: Cell lysates from untransfected HEK293T cells; Right: Cell lysates from HEK293T cells transfected with RC217885 using transfection reagent MegaTran 2.0 (Cat# [TT210002]).



Coomassie blue staining of purified SMARCB1 protein (Cat# [TP317885]). The protein was produced from HEK293T cells transfected with SMARCB1 cDNA clone (Cat# RC217885) using MegaTran 2.0 (Cat# [TT210002]).