

Product datasheet for RC217883

MEGF10 (NM_032446) Human Tagged ORF Clone

Product data:

Product Type:	Expression Plasmids
Product Name:	MEGF10 (NM_032446) Human Tagged ORF Clone
Tag:	Myc-DDK
Symbol:	MEGF10
Synonyms:	EMARDD; SR-F3
Mammalian Cell Selection:	Neomycin
Vector:	pCMV6-Entry (PS100001)
E. coli Selection:	Kanamycin (25 ug/mL)
ORF Nucleotide Sequence:	>RC217883 representing NM_032446 Red=Cloning site Blue=ORF Green=Tags(s)

TTTTGTAATACGACTCACTATAGGGCGGCCGGAATTCGTCGACTGGATCCGGTACCGAGGAGATCTGCC
GCC**CGATCGC**C

ATGGTTATTTCTTTGAACACTCATGCCTGAGCTTTATTTGTTTATTGTTATGCCACTGGATTGGGACAGCAT
CACCTCTGAATCTTGAAGACCCTAATGTGTGTAGCCACTGGGAAAGCTACTCAGTGACTGTGCAAGAGTC
ATACCCACATCCCTTTGATCAAATTTACTACAGAGCTGCACTGACATTCTAACTGGTTTAAATGCAGC
CGGCACAGAGTCAGCTATCGGACAGCCTATCGACATGGGAGAAGACTATGTATAGGCGCAAGTCTCAGT
GTTGTCCTGGATTTTATGAAAGCGGGAAATGTGTGTCCCCACTGTGCTGATAAATGTGTCATGGTGC
CTGATTGCTCCAAACACCTGTCAGTGTGAGCCTGGCTGGGAGGGACCAACTGCTCCAGTGCCTGCGAT
GGTGATCACTGGGGTCCCCACTGCACCAGCCGGTGCCAGTGCAAAAATGGGGCTCTGTGCAACCCCATCA
CCGGGGCTTGCCACTGTGCTGCGGGCTTCCGGGGCTGGCGCTGCGAGGACCGCTGTGAGCAGGGCACCTA
TGGTAACGACTGTCATCAGAGATGCCAGTGCCAGAATGGAGCCACCTGCGACCACGTACCGGGGAATGC
CGCTGCCACCAGGATACACCGGAGCCTTCTGTGAGGATCTTGTCTCCTGGTAAACATGGTCCACAGT
GTGAGCAGAGATGCCCTTGTCAAATGGAGGAGTGTGTATCACGTCCTGGAGAATGCTCTTGCCTTC
TGGCTGGATGGGCACAGTGTGTGGTCAGCCTTGCCCGAGGGTCTGTTGGAAAGAACTGTTCCCAAGAA
TGCCAGTGCCATAATGGAGGGACGTGTGATGCTGCCACAGGCCAATGTCATTGCAGTCCAGGATACACAG
GGGAACGGTGCCAGGATGAGTGTCTGTTGGGACCTATGGCGTTCTCTGTGCTGAGACCTGCCAGTGTGT
CAACGGAGGGAAGTGTACCACGTGAGCGGCGCATGCCTCTGTGAAGCAGGCTTTGCTGGCGAGCGCTGC
GAAGCACGCTGTGCTGAGGGGCTCTACGGCATCAAATGTGACAAACGGTGTCCCTGCCACCTGGAAA
ACACTCATAGCTGTACCCCATGTCTGGAGAGTGTGCCTGCAAGCCGGGCTGGTCAGGACTCTACTGTAA
TGAGACATGTTCTCCTGGATTCTACGGGAAGCTTGCACAGATCTGCAGCTGCCAAAATGGGGCAGAC
TGTGACAGTGTGACTGAAAAGTGCACCTGTGCCAGGATTCAAAGGAATTGACTGCTCTACCCATGCC
CTCTGGGAACCTATGGATAAACTGTTCTCTCGCTGTGGCTGTAAAAATGATGCAGTCTGCTCTCCTGT
GGACGGGCTTTGACTTGAAGCAGGCTGGCACGGGGTGGACTGCTCCATCAGATGTCCAGTGGCACA



TGGGGCTTTGGCTGTAACCTAACATGCCAGTGCCTCAACGGGGGAGCCTGCAACACCCTGGACGGGACCT
GCACGTGTGCACCTGGATGGCGCGGGGAGAAATGCGAACTTCCCTGCCAGGATGGCACGTACGGGCTGAA
CTGTGCTGAGCGCTGCGACTGCAGCCACGCAGATGGTGGCCACCCTACCACGGGCCATTGCCGCTGCCTC
CCCGGATGGTCAGGTGTCCACTGTGACAGCGTGTGTGCTGAGGGACGCTGGGGCCCCAACTGCTCCCTGC
CCTGCTACTGTAAAAATGGGGCTTCATGCTCCCCTGATGATGGCATCTGCGAGTGTGCACCAGGCTTCCG
AGGCACCACCTGTCAGAGGATCTGCTCCCCTGGTTTTATGGGCATCGCTGCAGCCAGACATGCCACAG
TGCGTTACAGCAGCGGGCCCTGCCACCACATCACGGCCTGTGTGACTGCTTGCCTGGTTACAGGGC
CCCTCTGCAATGAAGTGTGTCCCAGTGGCAGATTTGGGAAAAACTGTGCAGGAATTTGTACCTGCACCAA
CAACGGAACCTGTAACCCATTGACAGATCTTGTCAAGTGTACCCCGTTGGATTGGCAGTGACTGCTCT
CAACCATGTCCACCTGCCACTGGGGCCCCAACTGCATCCACACGTGCAACTGCCATAATGGAGCTTTCT
GCAGCGCTACGATGGGGAATGTAATGCACTCCTGGCTGGACAGGGCTCTACTGCACTCAGAGATGTCC
TCTAGGGTTTTATGAAAAAGATTGTGCACTGATATGCCAATGTCAAACGGAGCTGACTGCGACCACATT
TCTGGGCAGTGTACTTGCCGCACTGGATTATGGGACGGCACTGTGAGCAGAAGTCCCTTCAGGAACAT
ATGGCTATGGCTGTCCAGATATGTGATTGTCTGAACAACCTCCACCTGCGACCACATCACTGGGACCTG
TACTGCAGCCCCGATGGAAGGGAGCGAGATGTGATCAAGCTGGTGTATCATAGTTGGAATCTGAAC
AGCTTAAGCCGAACCACTGCTCTCCCTGCTGATTCCCTACCAGATCGGGGCCATTGCAGGCATCATCA
TTCTTGTCTAGTTGTTCTTCTTCTACTGGCATTGTTTATTATAGACACAAGCAGAAGGGAAGGA
ATCAAGCATGCCAGCAGTTACCTACACCCTGCTATGAGGGTCGTCAATGCAGATTATACCATTTACGGA
ACCCTTCTCACAGCAATGGTGGAAACGCTAATAGCCACTACTTCACCAATCCCAGTTACCACACGCTCA
CCCAGTGTGCCACATCCCCTCACGTCAACAACAGGGACAGGATGACTGTACGAAGTCAAAAAACAATCA
ACTGTTTGTGAATCTTAAAAATGTGAACCCTGGGAAGAGAGGCCCTGTGGGGACTGCACTGGGACATTG
CCGGCTGACTGGAACATGGCGGCTACCTCAACGAGCTCGGTGCTTTTGGACTTGACAGAAGCTATATGG
GAAAACTTTAAAGACCTGGGAAAGAATTCTGAATATAATTCAAGTAAGTCTCCCTAAGCAGTTCTGA
GAACCCATATGCCACTATTAAGACCCACCTGTACTTATCCCGAAAAGCTCAGAGTGTGGTTATGTGGAG
ATGAAATCGCCGGCACGAAGAGATTCCCATATGCAGAGATCAATAACTCAACTCAGCCAACAGGAATG
TCTATGAAGTTGAACCTACAGTGAGTGTGTCCAAGGAGTATTCAGCAATAATGGGCGTCTCTCCAGGA
TCCATATGACCTCCCAAAGAAGCAGTCACATCCCTTGTCTTATGACCTGCTGCCAGTCCGAGACAGTTCA
TCCTCCCCTAAGCAAGAGGACAGTGGTGGTAGCAGCAGCAACAGCAGCAGCAGCAGTGA

ACGGTACGCGGCCGCTCGAGCAGAACTCATCTCAGAAGAGGATCTGGCAGCAATGATATCCTGGATT
ACAAGGATGACGACGATAAGGTTTAA

Protein Sequence: >RC217883 representing NM_032446
Red=Cloning site Green=Tags(s)

MVISLNSCLSFICLLCHWIGTASPLNLEDPNVCSHWESYSVTVQESYPHPFDQIYYTSTCDILNWFKCT
RHRVSYRTAYRHGEKTMYYRKSQCCPGFYESGEMCVPHCADKCVHGRCIAPNTCQCEPGWGGTNCSSACD
GDHWGPHCTSRCQCKNGALCNPIITGACHCAAGFRGWRCEDRCEQGTYGNDCHQRCQCQNGATCDHVTGEC
RCPPGYTGAFCEDLCPGKHPQCEQRCPCQNGGVCHHVTGECSCPSGWMGTVCQGPCPEGRFGKNCSQE
CQCHNGGTCDAATGQCHCSPGYTGERCQDECPVGTGVLCAETCQCQVNGGKCYHVSAGLCEAGFAGERC
EARLCPPEGLYGIKDKRCPCHLENTHSCHPMSGECACKPGWSGLYCNETCSPGFYGEACQIQICSCQNGAD
CDSVTGKCTCAPGFKIDCSTPCPLGTGYNCSRCGCKNDAVCSVDGSCTCKAGWHGVDCSIRCSGT
WGFGCNLTCQCLNGGACNTLDGTCTCAPGWRGEKCELPQDGTGYNCAERCDCSHADGCHPTTGHCRL
PGWSGVHCDVCAEGRWGPNCSLPCYCKNGASCPDDGICECAPGFRGTTTCQRICSPGFYGHRCSTQCPQ
CVHSSGPHHITGLCDLPGFTGALCNEVCPGRFGKNCAGICTCTNNGTCNPIDRSCQCYPGWIGSDCS
QCPPAHWGPNCIHTCNCHNGAFCSAYDGECKCTPGWTGLYCTQRCPLGFYKDCALICQCQNGADCDHI
SGQCTCRTGFMGRHCEQKCPSTYGYGCRQICDCLNNSTCDHITGTCTCYSPGWKGARCDQAGVIIVGNLN
LSRTSTALPADSYQIGAIAGIILVVLVLLALFIIYRHKQKGESSMPAVTYTPAMRVVNADYTISG
TLPHSNGGNANSHYFTNPSYHTLTQCATSPHVNNRDRMTVTKSKNNQLFVNLKNVNPGRKRPVGDCTGTL
PADWKHGGYLNELGAFGLDRSYMGKSLKDLGKNSEYNSSNCSLSSENPHYATIKDPPVLIPKSSECGYVE
MKSPARRDSPYAEINNSTSANRNVYEVEPTVSVVQGVFSNNGRLSQDPYDLPKNSHIPCHYDLLPVRDSS
SSPKQEDSGGSSSNSSSSSE

TRTRPLEQKLISEEDLAANDILDYKDDDDKV

Chromatograms: https://cdn.origene.com/chromatograms/mg4769_d08.zip

Restriction Sites: SgfI-MluI

Cloning Scheme:



ACCN: NM_032446

ORF Size: 3420 bp

OTI Disclaimer: Due to the inherent nature of this plasmid, standard methods to replicate additional amounts of DNA in E. coli are highly likely to result in mutations and/or rearrangements. Therefore, OriGene does not guarantee the capability to replicate this plasmid DNA. Additional amounts of DNA can be purchased from OriGene with batch-specific, full-sequence verification at a reduced cost. Please contact our customer care team at custsupport@origene.com or by calling 301.340.3188 option 3 for pricing and delivery.

The molecular sequence of this clone aligns with the gene accession number as a point of reference only. However, individual transcript sequences of the same gene can differ through naturally occurring variations (e.g. polymorphisms), each with its own valid existence. This clone is substantially in agreement with the reference, but a complete review of all prevailing variants is recommended prior to use. [More info](#)

OTI Annotation: This clone was engineered to express the complete ORF with an expression tag. Expression varies depending on the nature of the gene.

Components: The ORF clone is ion-exchange column purified and shipped in a 2D barcoded Matrix tube containing 10ug of transfection-ready, dried plasmid DNA (reconstitute with 100 ul of water).

Reconstitution Method:

1. Centrifuge at 5,000xg for 5min.
2. Carefully open the tube and add 100ul of sterile water to dissolve the DNA.
3. Close the tube and incubate for 10 minutes at room temperature.
4. Briefly vortex the tube and then do a quick spin (less than 5000xg) to concentrate the liquid at the bottom.
5. Store the suspended plasmid at -20°C. The DNA is stable for at least one year from date of shipping when stored at -20°C.

RefSeq: [NM_032446.3](#)

RefSeq Size: 7522 bp

RefSeq ORF: 3423 bp

Locus ID: 84466

UniProt ID: [Q96KG7](#)

Cytogenetics: 5q23.2

Domains: EGF_Lam, EGF, EGF

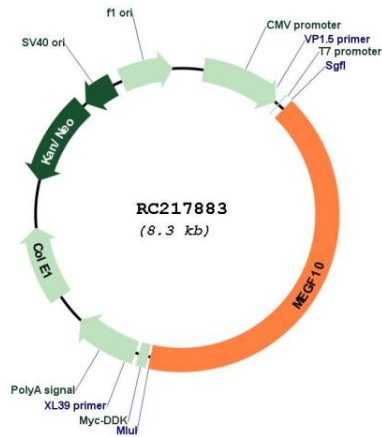
Protein Families: Transmembrane

MW: 122 kDa

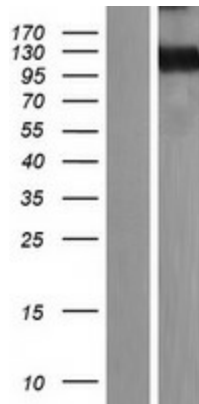
Gene Summary:

This gene encodes a member of the multiple epidermal growth factor-like domains protein family. The encoded protein plays a role in cell adhesion, motility and proliferation, and is a critical mediator of apoptotic cell phagocytosis as well as amyloid-beta peptide uptake in the brain. Expression of this gene may be associated with schizophrenia, and mutations in this gene are a cause of early-onset myopathy, areflexia, respiratory distress, and dysphagia (EMARDD) as well as congenital myopathy with minicores. Alternatively spliced transcript variants have been observed for this gene. [provided by RefSeq, Apr 2012]

Product images:



Circular map for RC217883



Western blot validation of overexpression lysate (Cat# [LY410139]) using anti-DDK antibody (Cat# [TA50011-100]). Left: Cell lysates from untransfected HEK293T cells; Right: Cell lysates from HEK293T cells transfected with RC217883 using transfection reagent MegaTran 2.0 (Cat# [TT210002]).