

## Product datasheet for RC217882

### Integrin alpha 3 (ITGA3) (NM\_002204) Human Tagged ORF Clone

#### Product data:

Product Type:	Expression Plasmids
Product Name:	Integrin alpha 3 (ITGA3) (NM_002204) Human Tagged ORF Clone
Tag:	Myc-DDK
Symbol:	Integrin alpha 3
Synonyms:	CD49C; FRP-2; GAP-B3; GAPB3; ILNEB; MSK18; VCA-2; VL3A; VLA3a
Mammalian Cell Selection:	Neomycin
Vector:	pCMV6-Entry (PS100001)
E. coli Selection:	Kanamycin (25 ug/mL)
ORF Nucleotide Sequence:	>RC217882 representing NM_002204 Red=Cloning site Blue=ORF Green=Tags(s)

TTTTGTAATACGACTCACTATAGGGCGGCCGGAATTCGTCGACTGGATCCGGTACCGAGGAGATCTGCC  
GCC**CGATCGCC**

ATGGGCCCCGGCCCCAGCCGCGGCCCGGCCACGCCTGATGCTCTGTGCGCTCGCCTTGATGGTGG  
CGGCCGGCGGCTGCGTCGCTCCGCCTCAACCTGGATACCCGATTCTGGTAGTGAAGGAGCCGGGAA  
CCCGGGCAGCCTCTCGGCTACTCGGTGCCCCATCGGCAGACAGAGCGGCAGCAGCGCTACCTGCTC  
CTGGCTGGTGCCCCCGGAGCTCGCTGTGCCGATGGCTACACCAACCGGACTGGTGTGTACCTGT  
GCCCACTCACTGCCACAAGGATGACTGTGAGCGGATGAACATCACAGTAAAAATGACCCTGGCCATCA  
CATTATTGAGGACATGTGGCTTGGAGTGACTGTGCCAGCCAGGGCCCTGCAGGCAGAGTTCTGGTCTGT  
GCCACCCTACACCCAGGTGCTGTGGTCAGGGTCAGAAGACCAGCGGCCATGGTGGGCAAGTGCTACG  
TGCGAGGCAATGACCTAGAGCTGGACTCCAGTGATGACTGGCAGACCTACCACAACGAGATGTGCAATAG  
CAACACAGACTACCTGGAGACGGGCATGTGCCAGCTGGGACCAGCGGTGGCTTACCCAGAACACTGTG  
TACTTCGGCGCCCCGGTGCCTACAACCTGGAAAGGAAACAGCTACATGATTACAGCGCAAGGAGTGGGACT  
TATCTGAGTATAGTTACAAGGACCCAGAGGACCAAGGAAACCTCTATATTGGGTACACGATGCAGGTAGG  
CAGCTTCATCCTGCACCCAAAAACATCACCATTGTGACAGGTGCCCCACGGCACGACATATGGGCGCG  
GTGTTCTTGCTGAGCCAGGAGGCGGCGGAGACCTGCGGAGGAGGAGGTGCTGGAGGGCTCGCAGGTGG  
GCGCTATTTTGGCAGCGCCATTGCCCTGGCAGACCTGAACAATGATGGGTGGCAGGACCTCCTGGTGGG  
CGCCCCCTACTACTTTGAGAGGAAAGAGGAAGTGGGGGTGCCATCTATGTCTTCAATGAACCAGGCGGGA  
ACCTCCTTCCCTGCTCACCCCTCACTCCTTCTTCATGGCCCCAGTGGCTCTGCCTTTGGTTTATCTGTGG  
CCAGCATTGGTGACATCAACCAGGATGGATTTCCAGGATATTGCTGTGGGAGCTCCGTTTGAAGGCTTGGG  
CAAAGTGACATCTATCACAGTAGCTCTAAGGGGCTCCTCAGACAGCCCCAGCAGGTAATCCATGGAGAG  
AAGCTGGGACTGCCTGGGTTGGCCACCTTCGGCTATTCCCTCAGTGGGCAGATGGATGTGGATGAGAAT  
TCTACCCAGACCTTCTAGTGGGAAGCCTGTGAGCCACATTGTGCTGCTGCGGGCCCGCCCGTCATCAA  
CATCGTCCACAAGACCTTGGTGCCAGGCCAGCTGTGCTGGACCTGCACCTTTCACGGCCACCTCTTGT



[View online »](#)

```
GTGCAAGTGGAGCTGTGCTTTGCTTACAACCAGAGTGCCGGGAACCCCAACTACAGGCGAAACATCACCC
TGGCCTACACTCTGGAGGCTGACAGGGACCGCCGGCCGCCCGGCTCCGCTTTGCCGGCAGTGAGTCCGC
TGTCTTCCACGGCTTCTTCTCCATGCCCGAGATGCGCTGCCAGAAGCTGGAGCTGCTCCTGATGGACAAC
CTCCGTGACAACTCCGCCCATCATCATCTCCATGAACACTCTTTACCTTTGCCGGATGCCCGATCGCC
CCCGGCTGGGGCTGCGGTCCCTGGACGCCTACCGATCCTCAACCAGGCACAGGCTCTGGAGAACCACAC
TGAGGTCAGTCCAGAAGGAGTGCGGGCTGACAACAAGTGTGAGAGCAACTTCAGATGCGGGCAGCC
TTCGTGTACAGAGCAGCAGAGAAGCTGAGCAGGCTCCAGTACAGCAGAGACGTCGGAAATTGCTCCTGA
GCATCAACGTGACGAACACCCGGACCTCGGAGCGCTCCGGGGAGGACGCCACAGGGCGCTGCTCACCCCT
GGTGGTGCCTCCCGCCCTGCTGTCTCAGTGCGCCCCCGGGGCTGCCAAGCTAATGAGACCATC
TTTTGCGAGCTGGGAACCCCTTCAAACGGAACCAGAGGATGGAGCTGCTCATCACCTTTGAGGTCATCG
GGGTGACCCTGCACACAAGGGACCTTCAGGTGCAGCTGCAGCTCTCCACGTGAGTACCAGGACAACCT
GTGGCCCATGATCCTCACTCTGCTGGTGGACTATACACTCCAGACCTCGTTAGCATGGTAAATCACCGG
CTACAAAGCTTCTTTGGGGGACAGTGATGGGTGAGTCTGGCATGAAAACGTGGAGGATGTAGGAAGCC
CCCTCAAGTATGAATCCAGGTGGGCCAATGGGGAGGGGCTGGTGGGCTGGGACCCCTGGTCTTAGG
TCTGGAGTGGCCCTACGAAGTCAGCAATGGCAAGTGGCTGCTGTATCCACGGAGATCACCGTCCATGGC
AATGGGTCTGGCCCTGCCGACCACCTGGAGACCTTATCAACCCCTCAACCTCACTCTTTCTGACCCTG
GGGACAGGCCATCATCCCCACAGCGCAGGCGGGCAGAGCTGGATCCAGGGGGAGGCCAGGGCCCCCACC
TGTCACTCTGGCTGCTGCCAAAAAGCCAAGTCTGAGACTGTGCTGACCTGTGCCACAGGGCGTGCCAC
TGTGTGTGGCTAGAGTGCCCATCCCTGATGCCCCGTTGTACCAACGTGACTGTGAAGGCACGAGTGT
GGAACAGCACCTTCATCGAGGATTACAGAGACTTTGACCGAGTCCGGGTAATGGCTGGGCTACCCATT
CCTCCGAACCAGCATCCCACCATCAACATGGAGAACAAGACCAGTGGTCTCTGTGGACATTGACTCG
GAGCTGGTGGAGGAGCTGCCGGCCGAAATCGAGCTGTGGCTGGTGTGGTGGCCGTGGGTGCAGGGCTGC
TGCTGTGGGGCTGATCATCCTCCTGCTGTGGAAGTGGGCTTCTTCAAGCGAGCCCGCACTCGCGCCCT
GTATGAAGCTAAGAGGCAGAAGGCGGAGATGAAGAGCCAGCCGTGAGAGCAGAGAGGCTGACCGACGAC
TAC
```

ACGCGTACGCGGCCGCTCGAGCAGAACTCATCTCAGAAGAGGATCTGGCAGCAATGATATCCTGGATT  
ACAAGGATGACGACGATAAGGTTTAA

**Protein Sequence:**

>RC217882 representing NM\_002204

Red=Cloning site Green=Tags(s)

```
MGPGPSRAPRAPRLMLCALALMVAAGGCVVSAFNLDTRFLVVKEAGNPGSLFGYSVALHRQTERQQRYLL
LAGAPRELAVPDGYTNRGTAVYLCPLTAHKDDCERMNITVKNDPGHHIIEDMWLGVTVASQGPAGRVLVC
AHRYTQVLWSGSEDQRRMVGKCYVRGNLELDSSDDWQTYHNEMCNSNTDYLETGMCQLGTSGGFTQNTV
YFGAPGAYNWKNSYMIQRKEWDLSEYSYKDPEDQGNLYIGYTMQVGSFILHPKNITIVTGAPRHRHMGA
VFLLSQEAGGDLRRRQVLEGSQVAYFGSAIALADLNNDGWQDLLVGAPYYFERKEEVGGAIYVFMNQAG
TSFPAHPSLLLHGPGSFAFGLSVASIGDINQDGFQDIIVGAPFEGLGKVYIYHSSKGLLRQPQQVIHGE
KLGLPGLATFGYLSGQMDVDENFYPDLLVGLSDHIVLLRARPVINIVHKTLVPRPAVLDPALCTATSC
VQVELCFAYNQSAGNPNYRRNITLAYTLEADRRRPPRLRFAGSESAVFHGGFFSMPMERCQKLELLMDN
LRDKLRPIIISMNYSPLRMPDRPRLGLRSLDAYPILNQAQALENHTEVQFQKECGPDKNCESNLQMRAA
FVSEQQQKLSRLQYSRDVRKLLLSINVTNTRTSERSGEDAHEALLTLVPPALLLSSVRPPGACQANETI
FCELGPNPFRNQRMEELLITFEVIGVTLHTRDLQVQLQLSTSSHQDNLWPMILTLLVDYTLQTSLSMVNHR
LQSF FGGTVMGESGMKTVEDVGSPLKYEFQVGMGEGLVGLGTLVLGLEWPYEVSNKWLLYPTEITVHG
NGSWPCRPPGDLINPLNLTLSDPDRPSSPQRRRRQLDPGGGQGPPPVTLAAAKKAKSETVLTATGRAH
CWLVECPDPVVTNVTVKARVWNSTFIEDYRDFDRVRVNGWATLFLRTSIPTINMENKTTWFSVDIDS
ELVEELPAEIELWLVLVAVGAGLLLLGLIILLLWKCGFFKRARTRALYEAQRKAEMKSPSETERLTDD
Y
```

TRTRPLEQKLISEEDLAANDILDYKDDDDKV

**Chromatograms:**

[https://cdn.origene.com/chromatograms/mk6220\\_a08.zip](https://cdn.origene.com/chromatograms/mk6220_a08.zip)

**Restriction Sites:** SgfI-MluI

**Cloning Scheme:**



**ACCN:** NM\_002204

**ORF Size:** 3153 bp

**OTI Disclaimer:** The molecular sequence of this clone aligns with the gene accession number as a point of reference only. However, individual transcript sequences of the same gene can differ through naturally occurring variations (e.g. polymorphisms), each with its own valid existence. This clone is substantially in agreement with the reference, but a complete review of all prevailing variants is recommended prior to use. [More info](#)

**OTI Annotation:** This clone was engineered to express the complete ORF with an expression tag. Expression varies depending on the nature of the gene.

**Components:** The ORF clone is ion-exchange column purified and shipped in a 2D barcoded Matrix tube containing 10ug of transfection-ready, dried plasmid DNA (reconstitute with 100 ul of water).

**Reconstitution Method:**

1. Centrifuge at 5,000xg for 5min.
2. Carefully open the tube and add 100ul of sterile water to dissolve the DNA.
3. Close the tube and incubate for 10 minutes at room temperature.
4. Briefly vortex the tube and then do a quick spin (less than 5000xg) to concentrate the liquid at the bottom.
5. Store the suspended plasmid at -20°C. The DNA is stable for at least one year from date of shipping when stored at -20°C.

**RefSeq:** [NM\\_002204.4](#)

**RefSeq Size:** 4637 bp

**RefSeq ORF:** 3156 bp

**Locus ID:** 3675

**UniProt ID:** [P26006](#)

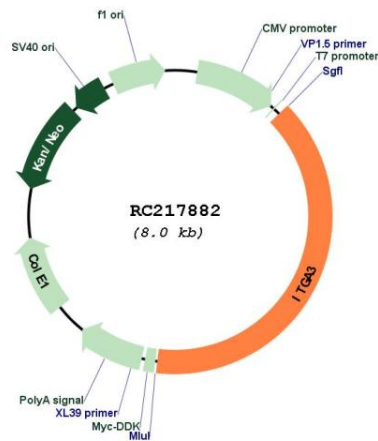
**Cytogenetics:** 17q21.33  
**Protein Families:** Druggable Genome, Transmembrane

**Protein Pathways:** Arrhythmogenic right ventricular cardiomyopathy (ARVC), Dilated cardiomyopathy, ECM-receptor interaction, Focal adhesion, Hematopoietic cell lineage, Hypertrophic cardiomyopathy (HCM), Pathways in cancer, Regulation of actin cytoskeleton, Small cell lung cancer

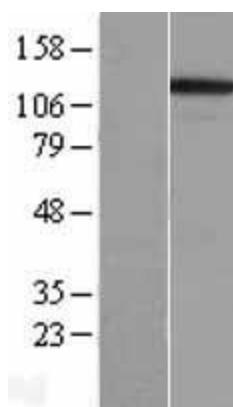
**MW:** 116.64 kDa

**Gene Summary:** The gene encodes a member of the integrin alpha chain family of proteins. Integrins are heterodimeric integral membrane proteins composed of an alpha chain and a beta chain that function as cell surface adhesion molecules. The encoded preproprotein is proteolytically processed to generate light and heavy chains that comprise the alpha 3 subunit. This subunit joins with a beta 1 subunit to form an integrin that interacts with extracellular matrix proteins including members of the laminin family. Expression of this gene may be correlated with breast cancer metastasis. [provided by RefSeq, Oct 2015]

**Product images:**



Circular map for RC217882



Western blot validation of overexpression lysate (Cat# [LY419471]) using anti-DDK antibody (Cat# [TA50011-100]). Left: Cell lysates from untransfected HEK293T cells; Right: Cell lysates from HEK293T cells transfected with RC217882 using transfection reagent MegaTran 2.0 (Cat# [TT210002]).