

Product datasheet for **RC217880**

SLC9A6 (NM_006359) Human Tagged ORF Clone

Product data:

Product Type:	Expression Plasmids
Product Name:	SLC9A6 (NM_006359) Human Tagged ORF Clone
Tag:	Myc-DDK
Symbol:	SLC9A6
Synonyms:	MRSA; NHE6
Mammalian Cell Selection:	Neomycin
Vector:	pCMV6-Entry (PS100001)
E. coli Selection:	Kanamycin (25 ug/mL)



[View online »](#)

ORF Nucleotide
Sequence:

>RC217880 representing NM_006359
Red=Cloning site Blue=ORF Green=Tags(s)

TTTTGTAATACGACTCACTATAGGGCGGCCGGGAATTCGTGCGACTGGATCCGGTACCGAGGAGATCTGCC
GCCCGCATCGCC

ATGGCTCGGCGCGGCTGGCGGCGGGACCCCTCCGCCGTGGCGTGGCAGCAGTCCCCGAGCCCGCAGGC
TCATGCGGCCCTTTGGTTGCTCCTCGCAGTGGGCGTCTTTGACTGGGCAGGGGCTTCGGACGGCGGCGG
CGGAGAGGCTAGAGCCATGGACGAGGAGATCGTGTCCGAGAAGCAAGCCGAGGAGAGCCACCGCAGGAC
AGCGCCAACCTGCTCATCTTTCATCTGCTGCTCACCTCACCATTCTCACAATCTGGCTCTTCAAGCACC
GCCGGGCCGCTTCTGCACGAAACCGGCTGGCTATGATTTATGGTCTTTTGGTGGCCTTGTGCTTCG
GTATGGCATTATGTTCCGAGTGATGTAATAATGTGACCCTGAGCTGTGAAGTGCAGTCAAGTCCAACCT
ACCTTACTGGTTACTTTTATCCAGAAGTATTTTCAACATATTACTTCTCCTATCATATTTTATGCAG
GTTATAGCCTGAAAAGGAGACATTTTTTTCGAAATCTTGGGTCTATCCTAGCATACGCTTTTCTTGAAC
AGCAATTTCTGTTTCGTTATTGGGTCAATAATGTATGGCTGTGAACGCTGATGAAGGTAAACGGGACAA
CTTGCAGGAGATTTTACTTTACAGATTGCCTACTGTTTGGTGCCATTGTATCAGCAACTGATCCAGTGA
CTGTTCTTGCTATATTCCACGAGCTTCAAGTTGATGTTGAACTCTATGCACCTCTTTTTTGGTGAAGGT
CCTCAATGATGCTGTTGCCATAGTGTCTCCTCCTCAATAGTGGCATACCAGCCAGCTGGAGACAACAGT
CACACCTTTGATGTCACAGCGATGTTCAAGTCTATTGGGATCTTCTTGGAACTTTCAGTGGATCTTTTG
CAATGGGTGCTGCTACTGGAGTGGTGACAGCTTATAGTACAAAAGTTCACCAAATTACGGGAGTCCAGTT
GTTGGAGACAGCCCTGTTCTTCTGATGTCCTGGAGTACCTTCTTGGCTGAAGCATGGGGCTTACACA
GGTGTAGTTGCAGTATTGTTTGGCCTCACACAAGCACATTATACGTATAATAATTTGCCACGGAGT
CTCAGCATAGAATAAACAGTTGTTTGGCTTCTCAATTTCTTGGCAGAGAATTTTCATCTTCTCCTACAT
GGGGCTGACACTGTTACCTTCCAGAACCATGTCTTTAACCCAACATTTGTAGTAGGAGCATTTGTTGCT
ATTTTCTTGGGAAGAGCTGCCAATATTTACCCCTTGTCCCTCTTACTTAATTTGGGTAGAAGAAGTAAGA
TTGGATCAAAATTTCAACACATGATGATGTTTGTGGCCTTCGTGGTGAATGGCATTGCTTGGCCAT
TCGAGATACTGCCACTTATGCACGGCAAATGATGTTTCCAGCACCACGCTTCTGATTGTGTTTTTACCCTG
TGGGTATTTGGTGGTGGCACCCTGCAATGCTGTCATGCTTGCATATCAGGGTGGTGGTATTGATTGAGCC
AAGAACAACCTTGGGTGTTCTGAAAATGAAAGGAGAACTACCAAAGCAGAGAGTGTGGCTTTTCCGGAT
GTGGTACAACCTTTGATCATAACTATCTGAAGCCTCTGCTGACCCACAGCGGGCTCCGCTGACAACAACA
CTCCCTGCCTGCTGTGGACCCATCGCCAGGTGCCTCACCAGCCCCAGGCTTACGAAAACAGGAACAGT
TGAAAGATGATGATTCTGATCTTATTCTCAATGATGGTGACATCAGTTTGACATATGGAGATTCTACTGT
GAACACTGAACCGGCCACATCCAGCGCCCCAAGGAGATTTATGGGAAACAGTTCTGAAGATGCCTTGGAT
CGGGAGCTTGATTTGGGGACCATGAACTGGTCATTTCGAGGAACACGCTGGTCTTCCAATGGATGATT
CTGAACCCCGCTAAATTTGTTAGATAATACGAGACATGGTCCAGCC

ACGCGTACGCGGCCGCTCGAGCAGAACTCATCTCAGAAGAGGATCTGGCAGCAAATGATATCCTGGATT
ACAAGGATGACGACGATAAGGTTTAA

Reconstitution Method:

1. Centrifuge at 5,000xg for 5min.
2. Carefully open the tube and add 100ul of sterile water to dissolve the DNA.
3. Close the tube and incubate for 10 minutes at room temperature.
4. Briefly vortex the tube and then do a quick spin (less than 5000xg) to concentrate the liquid at the bottom.
5. Store the suspended plasmid at -20°C. The DNA is stable for at least one year from date of shipping when stored at -20°C.

RefSeq: [NM_006359.3](#)

RefSeq Size: 4452 bp

RefSeq ORF: 2010 bp

Locus ID: 10479

UniProt ID: [Q92581](#)

Cytogenetics: Xq26.3

Domains: Na_H_Exchanger

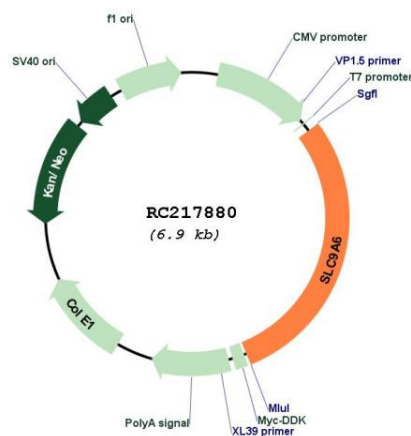
Protein Families: Druggable Genome, Transmembrane

Protein Pathways: Cardiac muscle contraction

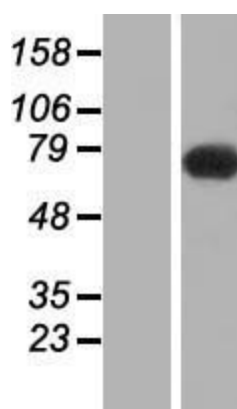
MW: 74 kDa

Gene Summary: This gene encodes a sodium-hydrogen exchanger that is a member of the solute carrier family 9. The encoded protein localizes to early and recycling endosomes and may be involved in regulating endosomal pH and volume. Defects in this gene are associated with X-linked syndromic cognitive disability, Christianson type. Alternate splicing results in multiple transcript variants.[provided by RefSeq, Apr 2010]

Product images:



Circular map for RC217880



Western blot validation of overexpression lysate (Cat# [LY416699]) using anti-DDK antibody (Cat# [TA50011-100]). Left: Cell lysates from untransfected HEK293T cells; Right: Cell lysates from HEK293T cells transfected with RC217880 using transfection reagent MegaTran 2.0 (Cat# [TT210002]).