

Product datasheet for **RC217877**

DEF6 (NM_022047) Human Tagged ORF Clone

Product data:

Product Type:	Expression Plasmids
Product Name:	DEF6 (NM_022047) Human Tagged ORF Clone
Tag:	Myc-DDK
Symbol:	DEF6
Synonyms:	IBP; SLAT; SWAP70L
Mammalian Cell Selection:	Neomycin
Vector:	pCMV6-Entry (PS100001)
E. coli Selection:	Kanamycin (25 ug/mL)



[View online »](#)

ORF Nucleotide
Sequence:

>RC217877 representing NM_022047
Red=Cloning site Blue=ORF Green=Tags(s)

TTTTGTAATACGACTCACTATAGGGCGGCCGGGAATTCGTCGACTGGATCCGGTACCGAGGAGATCTGCC
GCC**CGGATCGCC**

ATGGCCCTGCGCAAGGAAGTCTCAAGTCCATCTGGTACGCCCTTACCGCGCTGGACGTGGAGAAGAGTG
GCAAAGTCTCCAAGTCCCAGCTCAAGGTGCTGTCCACAACCTGTACACGGTCTGCACATCCCCATGA
CCCCGTGGCCCTGGAGGAACACTTCCGAGATGATGATGACGGCCCTGTGTCCAGCCAGGGATACATGCC
TACCTCAACAAGTACATCCTGGACAAGGTGGAGGAGGGGGCTTTTGTAAAGAGCACTTTGATGAGCTGT
GCTGGACGCTGACGGCCAAGAAGAACTATCGGGCAGATAGCAACGGGAACAGTATGCTCTCCAATCAGGA
TGCCTCCGCCTCTGGTGCCTTCAACTTCTGTCTGAGGACAAGTACCCTCTGATCATGGTTCCTGAT
GAGGTGGAATACCTGCTGAAAAAGTACTCAGCAGCATGAGCTTGGAGGTGAGCTTGGGTGAGCTGGAGG
AGCTTCTGGCCCAGGAGGCCAGGTGGCCAGACCACCGGGGGCTCAGCGTCTGGCAGTTCCTGGAGCT
CTTCAATTCGGGCGCTGCCTGCGGGCGTGGCCGGGACACCCTCAGCATGGCCATCCACGAGGTCTAC
CAGGAGCTCATCCAAGATGTCTGAAGCAGGGCTACCTGTGGAAGCGAGGGCACCTGAGAAGGAAGTGGG
CCGAACGCTGGTTCAGCTGCAGCCAGCTGCCTCTGCTACTTTGGGAGTGAAGAGTGCAAAGAGAAAAG
GGGCATTATCCCCTGGATGCACACTGCTGCGTGGAGGTGCTGCCAGACCAGCGACGGAAAGCGCTGCATG
TTCTGTGTGAAGCAGCCACCCGACGTATGAGATGAGCGCTCAGACACGCGCCAGCGCCAGGAGTGGGA
CAGCTGCCATCCAGATGGCGATCCGGCTGCAGGCCGAGGGGAAGACGTCCCTACACAAGGACCTGAAGCA
GAAACGGCGCAGCAGCGGGAGCAGCGGGAGCGGCCCGGGCGGCAAGGAAGAGGAGCTGCTGCGGCTG
CAGCAGCTGCAGGAGGAGAAGGAGCGGAAGCTGCAGGAGCTGGAGCTGCTGCAGGAGCGCAGCGGCAGG
CCGAGCGGCTGCTGCAGGAGGAGGAGAACCGGCCCGCAGCCAGCAGCAGCGGAGCTGCAGCAGGCGTCTCGA
GGCCAACCTGCGCGAGGCGGAGCAGGCCCGGCCCTCCATGCAGGCTGAGATGGAGCTGAAGGAGGAGGAG
GCTGCCCGGCAGCGCAGCGCATCAAGGAGCTGGAGGAGATGCAGCAGCGGTTGCAGGAGGCCCTGCAAC
TAGAGGTGAAAGCTCGGCGAGATGAAGAATCTGTGCGAATCGCTCAGACCAGACTGCTGGAAGAGGAGGA
AGAGAAGCTGAAGCAGTTGATGCAGCTGAAGGAGGAGCAGGAGCGCTACATCGAACGGGCGCAGCAGGAG
AAGGAAGAGCTGCAGCAGGAGATGGCACAGCAGAGCCGCTCCCTGCAGCAGGCCAGCAGCAGCTGGAGG
AGGTGCGGCAGAACCGGCAGAGGGCTGACGAGGATGTGGAGGCTGCCAGAGAAAAGTGCAGGAGGAG
CACCAACGTGAAACTGGAATGTCCAGATGAACCGGCTGATGCATCCAATTGAGCTGGAGATAAGCGT
CCGGTACCCAGCAGCTCCTTCTCAGGCTCCAGCCCCCTGCTTGGCCACCGTACTCCTCCCTAAGC
GCCTGACCCGCTGGGGATCCCAGGGCAACAGGACCCCTCGCCCAACAGCAATGAGCAGCAGAAGTCCCT
CAATGGTGGGGATGAGGCTCCTGCCCGGCTTCCACCCCTCAGGAAGATAAACTGGATCCAGCACCAGAA
AAT

ACGCGTACGCGGCCGCTCGAGCAGAAACTCATCTCAGAAGAGGATCTGGCAGCAAATGATATCCTGGATT
ACAAGGATGACGACGATAAGGTTTAA

Reconstitution Method:

1. Centrifuge at 5,000xg for 5min.
2. Carefully open the tube and add 100ul of sterile water to dissolve the DNA.
3. Close the tube and incubate for 10 minutes at room temperature.
4. Briefly vortex the tube and then do a quick spin (less than 5000xg) to concentrate the liquid at the bottom.
5. Store the suspended plasmid at -20°C. The DNA is stable for at least one year from date of shipping when stored at -20°C.

RefSeq: [NM_022047.2](#), [NP_071330.2](#)

RefSeq Size: 2320 bp

RefSeq ORF: 1896 bp

Locus ID: 50619

UniProt ID: [Q9H4E7](#)

Cytogenetics: 6p21.31

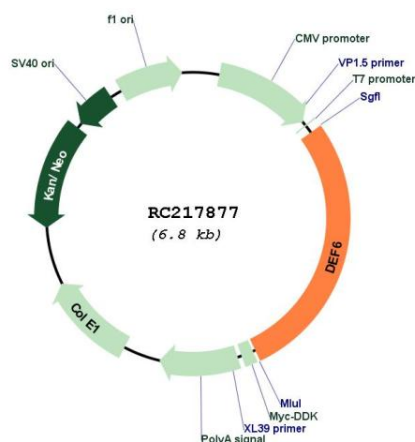
Domains: PH

Protein Families: Druggable Genome

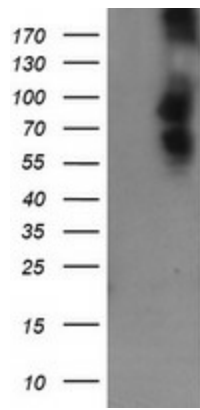
MW: 73.7 kDa

Gene Summary: DEF6, or IBP, is a guanine nucleotide exchange factor (GEF) for RAC (MIM 602048) and CDC42 (MIM 116952) that is highly expressed in B and T cells (Gupta et al., 2003 [PubMed 12923183]).[supplied by OMIM, Mar 2008]

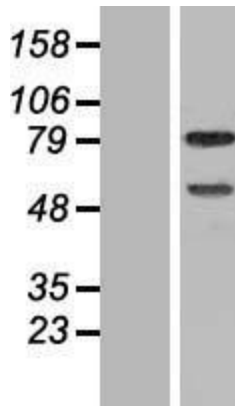
Product images:



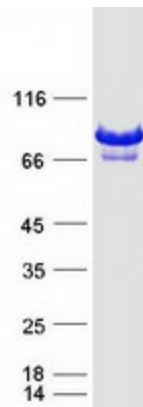
Circular map for RC217877



HEK293T cells were transfected with the pCMV6-ENTRY control (Cat# [PS100001], Left lane) or pCMV6-ENTRY DEF6 (Cat# RC217877, Right lane) cDNA for 48 hrs and lysed. Equivalent amounts of cell lysates (5 ug per lane) were separated by SDS-PAGE and immunoblotted with anti-DEF6 (Cat# [TA505323]). Positive lysates [LY411815] (100ug) and [LC411815] (20ug) can be purchased separately from OriGene.



Western blot validation of overexpression lysate (Cat# [LY411815]) using anti-DDK antibody (Cat# [TA50011-100]). Left: Cell lysates from untransfected HEK293T cells; Right: Cell lysates from HEK293T cells transfected with RC217877 using transfection reagent MegaTran 2.0 (Cat# [TT210002]).



Coomassie blue staining of purified DEF6 protein (Cat# [TP317877]). The protein was produced from HEK293T cells transfected with DEF6 cDNA clone (Cat# RC217877) using MegaTran 2.0 (Cat# [TT210002]).