

Product datasheet for RC217874L1

IRF7 (NM_004029) Human Tagged Lenti ORF Clone

Product data:

Product Type:	Expression Plasmids
Product Name:	IRF7 (NM_004029) Human Tagged Lenti ORF Clone
Tag:	Myc-DDK
Symbol:	IRF7
Synonyms:	IMD39; IRF-7; IRF-7H; IRF7A; IRF7B; IRF7C; IRF7H
Mammalian Cell Selection:	None
Vector:	pLenti-C-Myc-DDK (PS100064)
E. coli Selection:	Chloramphenicol (34 ug/mL)
ORF Nucleotide Sequence:	The ORF insert of this clone is exactly the same as(RC217874).
Restriction Sites:	SgfI-RsrII
Cloning Scheme:	

Cloning sites used for ORF Shuttling:



* The last codon before the Stop codon of the ORF.

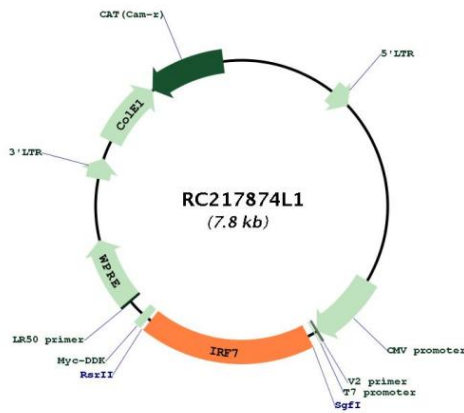
ACCN:	NM_004029
ORF Size:	1422 bp



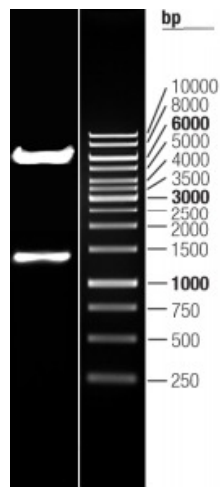
[View online »](#)

OTI Disclaimer:	The molecular sequence of this clone aligns with the gene accession number as a point of reference only. However, individual transcript sequences of the same gene can differ through naturally occurring variations (e.g. polymorphisms), each with its own valid existence. This clone is substantially in agreement with the reference, but a complete review of all prevailing variants is recommended prior to use. More info
OTI Annotation:	This clone was engineered to express the complete ORF with an expression tag. Expression varies depending on the nature of the gene.
Components:	The ORF clone is ion-exchange column purified and shipped in a 2D barcoded Matrix tube containing 10ug of transfection-ready, dried plasmid DNA (reconstitute with 100 ul of water).
Reconstitution Method:	<ol style="list-style-type: none">1. Centrifuge at 5,000xg for 5min.2. Carefully open the tube and add 100ul of sterile water to dissolve the DNA.3. Close the tube and incubate for 10 minutes at room temperature.4. Briefly vortex the tube and then do a quick spin (less than 5000xg) to concentrate the liquid at the bottom.5. Store the suspended plasmid at -20°C. The DNA is stable for at least one year from date of shipping when stored at -20°C.
RefSeq:	NM_004029.1
RefSeq Size:	1816 bp
RefSeq ORF:	1425 bp
Locus ID:	3665
UniProt ID:	Q92985
Cytogenetics:	11p15.5
Domains:	IRF
Protein Families:	Transcription Factors
Protein Pathways:	Cytosolic DNA-sensing pathway, RIG-I-like receptor signaling pathway, Toll-like receptor signaling pathway
MW:	51.3 kDa
Gene Summary:	IRF7 encodes interferon regulatory factor 7, a member of the interferon regulatory transcription factor (IRF) family. IRF7 has been shown to play a role in the transcriptional activation of virus-inducible cellular genes, including interferon beta chain genes. Inducible expression of IRF7 is largely restricted to lymphoid tissue. Multiple IRF7 transcript variants have been identified, although the functional consequences of these have not yet been established. [provided by RefSeq, Jul 2008]

Product images:



Circular map for RC217874L1



Double digestion of RC217874L1 using SgfI and RsrII