

## Product datasheet for **RC217870**

### YIPF5 (NM\_001024947) Human Tagged ORF Clone

#### Product data:

Product Type:	Expression Plasmids
Product Name:	YIPF5 (NM_001024947) Human Tagged ORF Clone
Tag:	Myc-DDK
Symbol:	YIPF5
Synonyms:	FinGER5; SB140; SMAP-5; SMAP5; YIP1A
Mammalian Cell Selection:	Neomycin
Vector:	pCMV6-Entry (PS100001)
E. coli Selection:	Kanamycin (25 ug/mL)
ORF Nucleotide Sequence:	>RC217870 ORF sequence Red=Cloning site Blue=ORF Green=Tags(s)

TTTTGTAATACGACTCACTATAGGGCGCCGGGAATTCGTCGACTGGATCCGGTACCGAGGAGATCTGCC  
GCC**CGGATCGCC**

ATGTCAGGCTTTGAAAACCTAAACACGGATTTCTACCAGACAAGTTACAGCATCGATGATCAGTCACAGC  
AGTCCTATGATTATGGAGGAAGTGGAGGACCCTATAGCAAACAGTATGCTGGCTATGACTATTCGCAGCA  
AGGCAGATTTGCCCTCCAGACATGATGCAGCCACAACAGCCATACACCGGGCAGATTTACCAGCCAAT  
CAGGCATATACTCCAGCTTCACCTCAGCCTTTCTATGAAAACAACCTTTGAGGATGAGCCACCTTTATTAG  
AAGAGTTAGGTATCAATTTTGACCACATCTGGCAAAAAACACTAACAGTATTACATCCGTTAAAAGTAGC  
AGATGGCAGCATCATGAATGAAACTGATTTGGCAGGTCCAATGGTTTTTGCCTTGCTTTGGAGCCACA  
TTGCTACTGGCTGGCAAAATCCAGTTTGCTATGTATACGGGATCAGTGCAATTGGATGTCTAGGAATGT  
TTTGTTTATTAACCTTAATGAGTATGACAGGTGTTTCATTTGGTTGTGTGGCAAGTGCCTTGGATATTG  
TCTTCTGCCCATGATCCTACTTTCCAGCTTTCAGTGATTTTTCTTTGCAAGGAATGGTAGGAATCATT  
CTCACTGCTGGGATTATTGGATGGTGTAGTTTTCTGCTTCCAAAATATTTATTTCTGCATTAGCCATGG  
AAGGACAGCAACTTTTAGTAGCATATCCTTGGCCTTTGTTATATGGAGTCTTGGCCTGATTTCCGCTCT  
T

**ACGCGT**ACGCGGCCGCTCGAGCAGAAACTCATCTCAGAAGAGGATCTGGCAGCAAATGATATCCTGGATT  
ACAAGGATGACGACGATAAGGTTTAA



[View online »](#)

**Protein Sequence:** >RC217870 protein sequence  
Red=Cloning site Green=Tags(s)

MSGFENLNTDFYQTSYSIDDQSQQSYDYGGSGGPYSKQYAGYDYSQQGRFVPPDMMQPQQPYTGQIYQPT  
 QAYTPASPQPFYGNFFEDEPPLLEELGINFDHIWQKTLTVLHPLKVADGSIMNETDLAGPMVFLAFGAT  
 LLLAGKIQFGYVYGISAIGCLGMFCLLNLMSTGVSFGCVASVLGYCLLPMILLSSFAVIFSLQGMVGII  
 LTAGIIGWCSFSASKIFISALAMEGQQLLVAYPCALLYGVFALISVF

TRTRPLEQKLISEEDLAANDILDYKDDDDKV

**Chromatograms:** [https://cdn.origene.com/chromatograms/mk6412\\_h06.zip](https://cdn.origene.com/chromatograms/mk6412_h06.zip)

**Restriction Sites:** SgfI-MluI

**Cloning Scheme:**



**ACCN:** NM\_001024947

**ORF Size:** 771 bp

**OTI Disclaimer:** The molecular sequence of this clone aligns with the gene accession number as a point of reference only. However, individual transcript sequences of the same gene can differ through naturally occurring variations (e.g. polymorphisms), each with its own valid existence. This clone is substantially in agreement with the reference, but a complete review of all prevailing variants is recommended prior to use. [More info](#)

**OTI Annotation:** This clone was engineered to express the complete ORF with an expression tag. Expression varies depending on the nature of the gene.

**Components:** The ORF clone is ion-exchange column purified and shipped in a 2D barcoded Matrix tube containing 10ug of transfection-ready, dried plasmid DNA (reconstitute with 100 ul of water).

**Reconstitution Method:**

1. Centrifuge at 5,000xg for 5min.
2. Carefully open the tube and add 100ul of sterile water to dissolve the DNA.
3. Close the tube and incubate for 10 minutes at room temperature.
4. Briefly vortex the tube and then do a quick spin (less than 5000xg) to concentrate the liquid at the bottom.
5. Store the suspended plasmid at -20°C. The DNA is stable for at least one year from date of shipping when stored at -20°C.

**RefSeq:** [NM\\_001024947.4](#)

**RefSeq Size:** 3463 bp

**RefSeq ORF:** 774 bp

**Locus ID:** 81555

**UniProt ID:** [Q969M3](#)

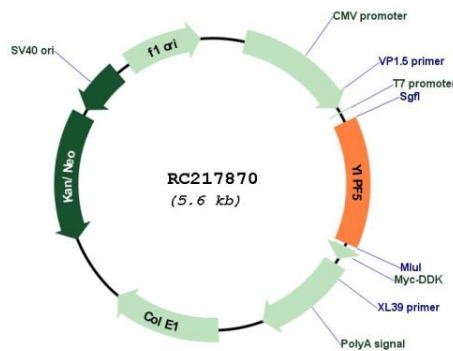
**Cytogenetics:** 5q31.3

**Protein Families:** Transmembrane

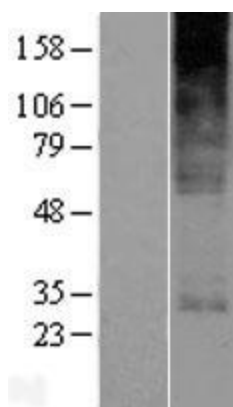
**MW:** 28 kDa

**Gene Summary:** Plays a role in transport between endoplasmic reticulum and Golgi.[UniProtKB/Swiss-Prot Function]

**Product images:**



Circular map for RC217870



Western blot validation of overexpression lysate (Cat# [LY422565]) using anti-DDK antibody (Cat# [TA50011-100]). Left: Cell lysates from untransfected HEK293T cells; Right: Cell lysates from HEK293T cells transfected with RC217870 using transfection reagent MegaTran 2.0 (Cat# [TT210002]).