

## Product datasheet for **RC217865**

### GREB1 (NM\_148903) Human Tagged ORF Clone

#### Product data:

Product Type:	Expression Plasmids
Product Name:	GREB1 (NM_148903) Human Tagged ORF Clone
Tag:	Myc-DDK
Symbol:	GREB1
Mammalian Cell Selection:	Neomycin
Vector:	pCMV6-Entry (PS100001)
E. coli Selection:	Kanamycin (25 ug/mL)
ORF Nucleotide Sequence:	>RC217865 representing NM_148903 Red=Cloning site Blue=ORF Green=Tags(s)

TTTTGTAATACGACTCACTATAGGGCGGCCGGAATTCGTCGACTGGATCCGGTACCGAGGAGATCTGCC  
GCC**CGATCGCC**

ATGGGAAATCTTACGCTGGACAGCTGAAGACGACACGCTTTGAAGAGGTCTTGACAATCCATCGAGG  
CATCCCTGCGGTCCAACAACCTGGTGCCAGGCCCATCTTTCCAGCTGTACCTGGAAGCTGAGCAGCA  
GCTTGCCGCTCTAGAAGGTGGTAGCCGAGTGGACAATGAGGAAGAGGAAGAAGAGGGAGAAGGAGGGCTG  
GAAACAAATGGCCCCCAAACCTTTCCAGCTGCACCTCTGCCTGAAGGATGCTGTACCACAGCCGGT  
TTTGCCAGGCCGGAAGGACCTGCGCCTGTCTCCATTTCCAACGAGCCCATGGATGTCCTGCGGGCTT  
TCTCCTCGTGGGGTCAAGTCCCCAGCCTGCCGACCATCTCCTGGTGTGCGCCGTTGACAAGAGGTTT  
TTGCCAGATGACAATGGCCACAATGCTCTTCTGGTTTCTCTGGGAATTGTGTTGGCTGTGAAAGAAAG  
GCTTCTGTACTTCACGGAATTCTCCAATCATATAAATCTGAAACTGACCACTCAACCAAGAAGCAGAA  
ACACTTGAAGTATTACCTGGTCCGTAATGCACAAGGGACTCTAACCAAGGACCTTTAATCTGTTGGAAA  
GGCTCAGAGTTTAGAAGCCGGCAGATCCCCGCCAGTACTGTTCCAGTTCCTCTTCCAGCCCTGGAGA  
GCACGGCTGCCTTCCCCAGCGAGCCGTTCTGGGACGAACCCAGCATCCTGATGGGAGCTCAGCAGGC  
AGGACCAGCTTCTGATCACCCCTACTAAACGCAGCAATGGGTCCGGCTGTTTTCAACGGCAAAGATTCC  
CCGAAGTGCCAACTGGCAAAGAATAACCTGTTGGCCCTGCCGACCATCGGCTTTAGGTATCTTGT  
CAAACCTCCGGGCCCCCAAAAAACGCCACAAGGGTGGTCTCAGAATCTCCATCAGCTCCAGATGGTGG  
CTGCCCAAGGTGGTGGAAACAGAGCTAAGTATGAGAGCGCAGGCATGTCTGCGTGCCGAGGTTGGC  
TTGGTGGGACCAGCTTACGTACCTTTCCAGTGGTGGCCTCTGGAGAACCAGTGTCTGTTCTGACAACT  
TGCTGAAAATATGCAAGGCCAAGCCAGTGATATTTAAAGTATTTGAAATGGTGTACCCAAATGGTAGC  
CCTTGGTCCGGCAGAACCTGCATCGCCCCGAGCTTA

**ACGCGT**ACGCGGCCGCTCGAGCAGAACTCATCTCAGAAGAGGATCTGGCAGCAATGATATCCTGGATT  
ACAAGGATGACGACGATAAGGTTTAA



[View online »](#)

**Protein Sequence:** >RC217865 representing NM\_148903  
Red=Cloning site Green=Tags(s)

MGNSYAGQLKTRFEVLHNSIEASLRSNL VPRP IFSQLYLEAEQQLAALEGGSRVDNEEEEEEGEGL  
 ETNGPPNPFQLHPLPEGCCTTDGFCQAGKDLRL VSI SNEPMDVPAGFLL VGVKSPSLPDHLLVCAVDKRF  
 LPDDNGHNALLGFSGNCVGCCKGFCYFTEFSNHINLKL TTQPKKQKHLKYLLVRNAQGT LTKGPLICWK  
 GSEFRSRQIPASTCSSSLFPALESTAAFPSEPVPGTNPSILMGAQQAGPASHPSLNAAMGPAVFNGKDS  
 PKCQQLAKNLLALPRPSALGILSNSGPPKRRHKGWSPESPAPDGGCPQGGGNRAKYESAGMSCVPQVG  
 LVGPASVTFPVVASGEPVSVPDNLKICKAKPVI FKFV VNGATQMVALGPAEPASPRSL

TRTRPLEQKLISEEDLAANDILDYKDDDDKV

**Chromatograms:** [https://cdn.origene.com/chromatograms/mk8057\\_h08.zip](https://cdn.origene.com/chromatograms/mk8057_h08.zip)

**Restriction Sites:** SgfI-MluI

**Cloning Scheme:**

Cloning sites used for ORF Shuttling:



\* The last codon before the Stop codon of the ORF

**ACCN:** NM\_148903

**ORF Size:** 1227 bp

**OTI Disclaimer:** The molecular sequence of this clone aligns with the gene accession number as a point of reference only. However, individual transcript sequences of the same gene can differ through naturally occurring variations (e.g. polymorphisms), each with its own valid existence. This clone is substantially in agreement with the reference, but a complete review of all prevailing variants is recommended prior to use. [More info](#)

**OTI Annotation:** This clone was engineered to express the complete ORF with an expression tag. Expression varies depending on the nature of the gene.

**Components:** The ORF clone is ion-exchange column purified and shipped in a 2D barcoded Matrix tube containing 10ug of transfection-ready, dried plasmid DNA (reconstitute with 100 ul of water).

**Reconstitution Method:**

1. Centrifuge at 5,000xg for 5min.
2. Carefully open the tube and add 100ul of sterile water to dissolve the DNA.
3. Close the tube and incubate for 10 minutes at room temperature.
4. Briefly vortex the tube and then do a quick spin (less than 5000xg) to concentrate the liquid at the bottom.
5. Store the suspended plasmid at -20°C. The DNA is stable for at least one year from date of shipping when stored at -20°C.

**RefSeq:** [NM\\_148903.3](#)

**RefSeq Size:** 2341 bp

**RefSeq ORF:** 1230 bp

**Locus ID:** 9687

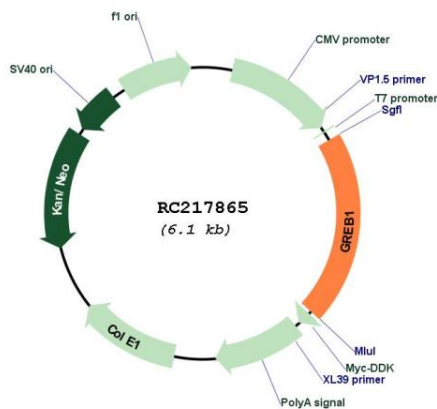
**UniProt ID:** [Q4ZG55](#)

**Cytogenetics:** 2p25.1

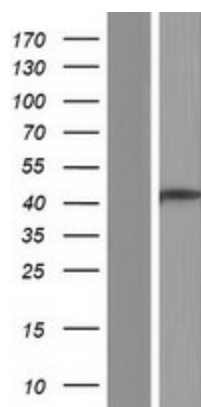
**MW:** 43.1 kDa

**Gene Summary:** This gene is an estrogen-responsive gene that is an early response gene in the estrogen receptor-regulated pathway. It is thought to play an important role in hormone-responsive tissues and cancer. Three alternatively spliced transcript variants encoding distinct isoforms have been found for this gene. [provided by RefSeq, Jul 2008]

### Product images:



Circular map for RC217865



Western blot validation of overexpression lysate (Cat# [LY407759]) using anti-DDK antibody (Cat# [TA50011-100]). Left: Cell lysates from untransfected HEK293T cells; Right: Cell lysates from HEK293T cells transfected with RC217865 using transfection reagent MegaTran 2.0 (Cat# [TT210002]).