

Product datasheet for **RC217861**

SIGLEC11 (NM_052884) Human Tagged ORF Clone

Product data:

| | |
|---------------------------|---|
| Product Type: | Expression Plasmids |
| Product Name: | SIGLEC11 (NM_052884) Human Tagged ORF Clone |
| Tag: | Myc-DDK |
| Symbol: | SIGLEC11 |
| Mammalian Cell Selection: | Neomycin |
| Vector: | pCMV6-Entry (PS100001) |
| E. coli Selection: | Kanamycin (25 ug/mL) |



[View online »](#)

ORF Nucleotide Sequence:

>RC217861 representing NM_052884.
 Blue=ORF Red=Cloning site Green=Tag(s)

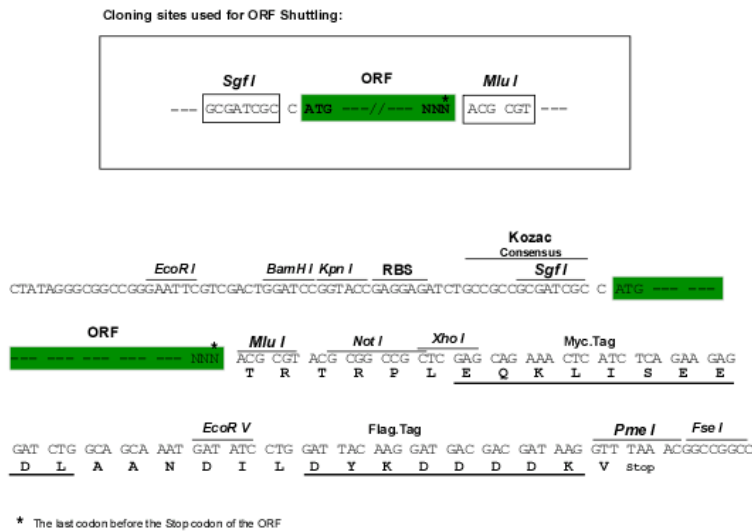
```
GCTCGTTTAGTGAACCGTCAGAATTTTGTAAACGACTCACTATAGGGCGGCCGGGAATTCGTGCACTG
GATCCGGTACCGAGGAGATCTGCCGCCCGGATCGCC
ATGCTGCTGCTGCCCCCTGCTGCTGCCCGTGTGGGGCGGGGTCCCTGAACAAGGATCCCAGTTACAGT
CTTCAAGTGCAGAGGCAGGTGCCGGTCCCGGAGGGCCTGTGTGCATCGTGTCTTGAACCTCTCCTAC
CCCCGGGATGGCTGGGACGAGTCTACTGCTTATGGCTACTGGTTCAAAGACGGACAGCCAAAG
ACGGGTGCTCCTGTGGCCACTAACCAACCAGAGTCGAGAGGTGAAATGAGCACCCGGGACCGATTCCAG
CTCACTGGGGATCCCGGCAAAGGGAGCTGCTCCTTGGTATCAGAGACGCGCAGAGGGAGGATGAGGCA
TGGTACTTCTTTTCGGGTGGAGAGAGGAAGCCGTGTGAGACATAGTTTCTGAGCAATGCGTTCTTTCTA
AAAGTAACAGCCCTGACTAAGAAGCCTGATGTCTACATCCCCGAGACCCTGGAGCCCGGGCAGCCGGTG
ACGGTCATCTGTGTGTTAACTGGGCTTCAAGAAATGCCAGCCCTTCTTTCTCCTGGACGGGGCT
GCCCTCTCCCCTAGAAGAACCAGACCAAGCACCTCCCCTTCTCAGTGTCTCAGCTTACGCCAGCCCC
CAGGACCACGACACCGACCTCACCTGCCATGTGGACTTCCAGAAAGGGTGTGAGCGCACAGAGGACC
GTCGACTCCGTGTGGCCTATGCCCCCAAAGACCTTATTATCAGCATTTACATGACAACACGTCAGCC
CTGGAACTCCAGGAAACGTCATATATCTGGAAGTTCAGAAAGGCCAGTTCTCCTGCCGCTCCTCTGTGCT
GCTGACAGCCAGCCCCCTGCCACGCTGAGCTGGGTCTGCAGGACAGAGTCTCTCCTCGTCCCACCCC
TGGGGCCCAAGACCCTGGGGCTGGAGCTGCGTGGGGTAAAGGCCGGGGATTAGGGCGCTACACCTGC
CGAGCGGAGAACAGGCTTGGCTCCCAGCAGCAAGCCCTGGACCTCTCTGTGCAGTATCCTCCAGAGAAC
CTGAGAGTGATGGTTTCCAAGCAAACAGGACAGTCTGGAAAACCTCGGAAACGGCACATCCCTCCCG
GTCTGGAGGGCCAAAGCCTGCGCCTGGTCTGTGTCAACACAGCAGCCCCCAGCCAGGCTGAGCTGG
ACCCGTTGGGGACAGACCGTGGGCCCTCCCAGCCCTCAGACCCCGGGTCTGGAGCTGCCACCCATT
CAAATGGAGCACGAAGGAGAGTTACCTGCCACGCTCAGCACCCCTCTGGGCTCCCAGCACGTCCTCTC
AGCCTCTCCGTGCACTACCCTCCACAGCTGCTGGGCCCTCCTGCTCCTGGGAGGCTGAGGGTCTGCAC
TGCAGTCTCCTCCCAGGCCAGCCCGGCCCTCCTGCGCTGGTGGCTGGGGAGGAGCTGCTGGAG
GGGAACAGCAGTCAGGGCTCCTTCGAGGTACCCCCAGCTCAGCCGGGCCCTGGGCAACAGCTCCCTG
AGCCTCCATGGAGGGCTCAGCTCCGGCCTCAGGCTCCGCTGTAAGGCCTGGAACCTCCACGGGGCCAG
AGTGGCTCTGTCTCCAGCTGCTACCAGGAAGCTGGAGCATGGGGGAGGACTTGGCCTGGGGGCTGCC
CTGGGAGCTGGCGTCGCTGCCCTGCTCGCTTTCTGTTCTCCTGCCTGTCTGCTTCCAGGTGAAGATCTGC
AGGAAGGAAGCTCGAAGAGGGCAGCAGCTGAGCAGGACGTGCCCTCCACCTGGGACCCATCTCCCAG
GGTCACCAGCATGAATGCTCGGCAGGCAGCTCCAAGACCACCCGCCCCAGGTGAGCCACCTACACC
CCGGGGAAGGGGAAGAGCAGGAGCTCCACTATGCCTCCCTCAGCTTCCAGGGCCTGAGGCTCTGGGAG
CCTGCGGACCAGGAGGCCCCAGCACCCAGTACTCGGAGATCAAGATCCACACAGGACAGCCCTG
AGGGGCCAGGCTTTGGGCTTCAATTGGAGAGGGAGATGTAGGGATGGTTCCAAAG
ACGCGTACGCGGCCGCTCGAGCAGAAACTATCTCAGAAGAGGATCTGGCAGCAATGATATCCTGGAT
TACAAGGATGACGACGATAAGGTTTAAACGGCCGGC
```

Protein Sequence:

>Peptide sequence encoded by RC217861
 Blue=ORF Red=Cloning site Green=Tag(s)

```
MLLLPLLLPVLGAGSLNKDPSYSLQVQRQVPVPEGLCVIVSCNLSYPRDGWDESTAAYGYWFKGRTSPK
TGAPVATNNQSREVMSTRDRFQLTGDPGKGSCSLVIRDAQREDEAWYFFRVERGSRVRHSFLSNAFFL
KVTALTKKPDVYIPETLEPGQPVTVICVFNWAFKKCPAPSFSWTGAALSPRRTRPSTSHFSVLSFTPSP
QDHDLDLCHVDFSRKGVSAQRTVRLRVAYAPKDLIIISHDNTSALELQGNVIYLEVQKGQFLRLCA
ADSQPPATLSWVLQDRVLSSSHWPGRPTLGLRLRGVVRAGDSGRYTCRAENRLGSQQALDLSVQYPPEN
LRVMVSQLANRTVLENLNGTSLPVLEGQLRLVCVTHSSPPARLWTRWQTVGSPQSDPGVLELPII
QMEHEGEFTCHAQHPLGSQHVSLSLSVHYPPQLLGPSCSWEAEGHLCSSSQASPAPSLRWLGEELLE
GNSSQGSFEVTPSSAGPWANSSLHLHGLSSGLRLRCKAWNVAHQSGSVFQLLPGKLEHGGGLGAA
LGAGVAALLAFCSCLVFRVYKICRKEARKRAAAEQDVPSTLGPISQGHQHECSAGSSQDHPPPGAATYT
PGKGEEQELHYASLSFQGLRLWEPADQEAPESTTEYSEIKIHTGQPLRGPFGQLEREMSGMVPK
TRTRPLEQKLISEEDLAANDILDYKDDDDKV
```

Chromatograms: https://cdn.origene.com/chromatograms/mk6167_b05.zip
Restriction Sites: SgfI-MluI
Cloning Scheme:



ACCN: NM_052884
ORF Size: 2058 bp

OTI Disclaimer: The molecular sequence of this clone aligns with the gene accession number as a point of reference only. However, individual transcript sequences of the same gene can differ through naturally occurring variations (e.g. polymorphisms), each with its own valid existence. This clone is substantially in agreement with the reference, but a complete review of all prevailing variants is recommended prior to use. [More info](#)

OTI Annotation: This clone was engineered to express the complete ORF with an expression tag. Expression varies depending on the nature of the gene.

Components: The ORF clone is ion-exchange column purified and shipped in a 2D barcoded Matrix tube containing 10ug of transfection-ready, dried plasmid DNA (reconstitute with 100 ul of water).

Reconstitution Method:

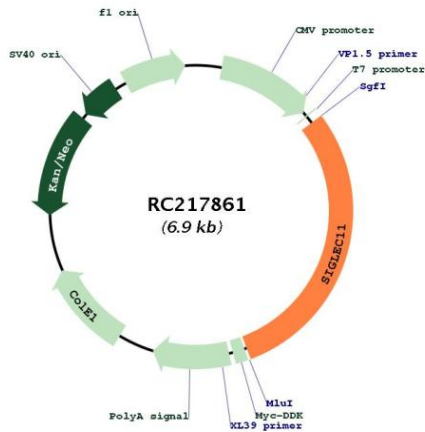
1. Centrifuge at 5,000xg for 5min.
2. Carefully open the tube and add 100ul of sterile water to dissolve the DNA.
3. Close the tube and incubate for 10 minutes at room temperature.
4. Briefly vortex the tube and then do a quick spin (less than 5000xg) to concentrate the liquid at the bottom.
5. Store the suspended plasmid at -20°C. The DNA is stable for at least one year from date of shipping when stored at -20°C.

RefSeq: [NM_052884.1](#), [NP_443116.1](#)
RefSeq Size: 3183 bp
RefSeq ORF: 2097 bp
Locus ID: 114132

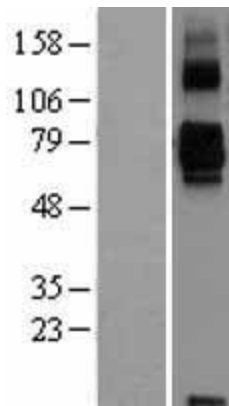
UniProt ID: [Q96RL6](#)
Cytogenetics: 19q13.33
Protein Families: Druggable Genome, Transmembrane
MW: 74.5 kDa

Gene Summary: This gene encodes a member of the sialic acid-binding immunoglobulin-like lectin family. These cell surface lectins are characterized by structural motifs in the immunoglobulin (Ig)-like domains and sialic acid recognition sites in the first Ig V set domain. This family member mediates anti-inflammatory and immunosuppressive signaling. Multiple transcript variants encoding different isoforms have been found for this gene. [provided by RefSeq, Oct 2011]

Product images:



Circular map for RC217861



Western blot validation of overexpression lysate (Cat# [LY403267]) using anti-DDK antibody (Cat# [TA50011-100]). Left: Cell lysates from untransfected HEK293T cells; Right: Cell lysates from HEK293T cells transfected with RC217861 using transfection reagent MegaTran 2.0 (Cat# [TT210002]).