

Product datasheet for **RC217858**

C14ORF140 (ZC2HC1C) (NM_024643) Human Tagged ORF Clone

Product data:

Product Type:	Expression Plasmids
Product Name:	C14ORF140 (ZC2HC1C) (NM_024643) Human Tagged ORF Clone
Tag:	Myc-DDK
Symbol:	C14ORF140
Synonyms:	C14orf140; FAM164C
Mammalian Cell Selection:	Neomycin
Vector:	pCMV6-Entry (PS100001)
E. coli Selection:	Kanamycin (25 ug/mL)



[View online »](#)

ORF Nucleotide Sequence:

>RC217858 representing NM_024643
 Red=Cloning site Blue=ORF Green=Tags(s)

TTTTGTAATACGACTCACTATAGGGCGGCCGGAATTCGTCGACTGGATCCGGTACCGAGGAGATCTGCC
 GCC**CGCATCGCC**

ATGGCTGGTCTCCAGCGTTGGCGTCCACATCTGCCTGTGGCGTTATGCTCCACATAATACAACGGAAG
 CTCCAGGGCCCCACTCAGCCAAGCAAGACTCTTACGAACAAGGTACTCTTCCCAGCAGTCTTGAAGGG
 GCACCTGAGGAACAATTTCCAGAAGCAGCTTTTGGCAACAAGAGTTGATTCTGGATAAAGTCTATACT
 CACCCCAATGGAACACCCAAACAAAAGCCCGGAGCTACTCTATCCCCACTGTACTGGAATCAGCCAGC
 AAGATCCAGAAAGTATTCCCAGGGCCAAGGAAATGGTTTGTTTACTCGTCAGGCCCTCAATCCTGGTA
 TCCCAAAGCCAATAACCAGGACTTTATCCCTTTACAAAGAAACGAGTTGGAGTGGACCGGGCGTCCCA
 TTGAAACCCATGGTCCACAGGAAGTCGTGCAGTACAGGTGAGGCTGGCACTGATGGGACCATAATGTCT
 ACCCAAGGCCCTGAGCCGAGAGATTTTCATCTAGAACTTTGGTGTGAGGAACAGGGCAACTTTTC
 TGTGGTTGGTACTGTTCTTGTGCCACGCAGGCGGAGAAGGCCGTGGCAAACCTTTGACAGGACGGAGTGG
 GTGCAGATCCGAAGACTAGAAGCTGCAGGGGAGAGCTTAGAGGAGGAAATCCGAAGAAAGCAGATTCCTC
 TGAGGGGAAAGCTGAAGAAGACAGAGGAGGAAGCTCAGAAGGATCCAGACGCAAAAAGGAACAGGCCAAGGA
 AAATGAAAACGGAGAGCTACAGAAAATTAATCTCCCAGGAGCAGAGTTAAAGGTAATAAAAGCAACACC
 ATGTACAAACCTATCTTCTCCCAGAAATTTGAGTTTGGAGAAAGATTTAGTAGAGACAGGAGAGAGGATG
 AAATTGGGGACGGTCTCAACAAAATTCAGGTCCATTCCAGTTCTCTGATTATAGAATCCAGAGGCTCAA
 AAGGAAAGGCTGGTAGCAAGCAATAATAAAATTCGAGACCCAGTCTCAGAGCCATCGGTGGAGAAATTC
 TCCCGCCTTCAGAAACACCAGTCGGTGTTCAGGGATCCGCCAGAAATCCAGCCTGTCCATGGCAC
 CAGACTCTCAGGTTCCAGCGGCTCCATTGAAGAGCCACAGCTGGGTGAGTGCAGCCACTGTGGGCGCAA
 ATTCTCTCGTTACGGCTGGAGAGACACTCCAACATCTGCAGCAGGATGCGGGGTTCCAAGAGGAAAGTG
 TTTGACTCTCCAGGGCCCGGGCTAAGGGCACAGAAGTACTGAGCAGTACTTGAAGTGAAGGGGCCAGCTT
 CAGCCAAGGCTGAACCTCCTCAGAAGAGCAACTGGAGA

ACGCGTACGCGGCCGCTCGAGCAGAAACTCATCTCAGAAGAGGATCTGGCAGCAAATGATATCCTGGATT
 ACAAGGATGACGACGATAAGGTTTAA

Protein Sequence:

>RC217858 representing NM_024643
 Red=Cloning site Green=Tags(s)

MAGLQRLASHLPVGVMLPHNTTEAPGPHSAKQDSYEQGDSSQQSLKGHLRNNFQKQLLSNKEILDKVYT
 HPKWNTQTKARSYSYPHCTGISQQDPESDSQQGNGLFYSSGPQSWYPKANNQDFIPFTKKRVGVDRAFP
 LKPMVHRKSCSTGEAGTDGDHNVYPRPPEPREFSSRNFGVRNQGNSFVSVGTVLAATQAEKAVANFDRTEW
 VQIRRLEAAGESLEEEERRKQILLRGKLLKTEEELRRIQTQKEQAKENENGELQKIILPRSRVKGKNSNT
 MYKPIFSPEFEFEFEFSRDRREDETWGRSQQNSGPFQFSDYRIQRLKRERLVASNNKIRDVPVSEPSVEKF
 SPPSETPVGALQGSARNSLSMAPDSSGSSGSIIEPQLGECSHCGRKFLSFRLERHSNICSRMRGSKRKV
 FDSSRARAKGTELEQYLNWKGPAKAEPPQKSNWR

TRTRPLEQKLISEEDLAANDILDYKDDDDKV

Chromatograms:

https://cdn.origene.com/chromatograms/mk8061_b09.zip

Restriction Sites:

Sgfl-Mlul

Cloning Scheme:


ACCN: NM_024643

ORF Size: 1368 bp

OTI Disclaimer: The molecular sequence of this clone aligns with the gene accession number as a point of reference only. However, individual transcript sequences of the same gene can differ through naturally occurring variations (e.g. polymorphisms), each with its own valid existence. This clone is substantially in agreement with the reference, but a complete review of all prevailing variants is recommended prior to use. [More info](#)

OTI Annotation: This clone was engineered to express the complete ORF with an expression tag. Expression varies depending on the nature of the gene.

Components: The ORF clone is ion-exchange column purified and shipped in a 2D barcoded Matrix tube containing 10ug of transfection-ready, dried plasmid DNA (reconstitute with 100 ul of water).

- Reconstitution Method:**
1. Centrifuge at 5,000xg for 5min.
 2. Carefully open the tube and add 100ul of sterile water to dissolve the DNA.
 3. Close the tube and incubate for 10 minutes at room temperature.
 4. Briefly vortex the tube and then do a quick spin (less than 5000xg) to concentrate the liquid at the bottom.
 5. Store the suspended plasmid at -20°C. The DNA is stable for at least one year from date of shipping when stored at -20°C.

RefSeq: [NM_024643.4](#)

RefSeq Size: 2093 bp

RefSeq ORF: 1371 bp

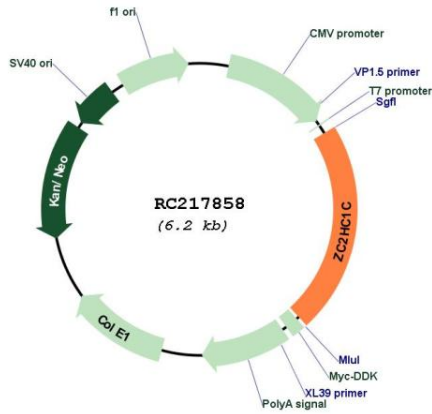
Locus ID: 79696

UniProt ID: [Q53FD0](#)

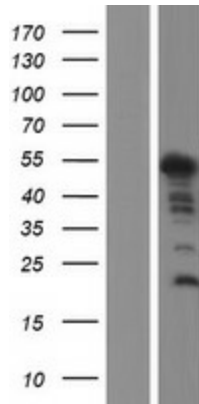
Cytogenetics: 14q24.3

MW: 51.5 kDa

Product images:



Circular map for RC217858



Western blot validation of overexpression lysate (Cat# [LY411092]) using anti-DDK antibody (Cat# [TA50011-100]). Left: Cell lysates from untransfected HEK293T cells; Right: Cell lysates from HEK293T cells transfected with RC217858 using transfection reagent MegaTran 2.0 (Cat# [TT210002]).