

Product datasheet for RC217847

Syndecan 1 (SDC1) (NM_001006946) Human Tagged ORF Clone

Product data:

Product Type:	Expression Plasmids
Product Name:	Syndecan 1 (SDC1) (NM_001006946) Human Tagged ORF Clone
Tag:	Myc-DDK
Symbol:	Syndecan 1
Synonyms:	CD138; SDC; SYND1; syndecan
Mammalian Cell Selection:	Neomycin
Vector:	pCMV6-Entry (PS100001)
E. coli Selection:	Kanamycin (25 ug/mL)
ORF Nucleotide Sequence:	>RC217847 ORF sequence Red=Cloning site Blue=ORF Green=Tags(s)

TTTTGTAATACGACTCACTATAGGGCGGCCGGAATTCGTCGACTGGATCCGGTACCGAGGAGATCTGCCGCCGCGATCGCC

ATGAGGCGCGGGCGCTCTGGCTCTGGCTGTGCGCGCTGGCGCTGAGCCTGCAGCCGGCCCTGCCGAAA
TTGTGGCTACTAATTTGCCCCCTGAAGATCAAGATGGCTCTGGGGATGACTCTGACAACCTCTCCGGCTC
AGGTGCAGGTGCTTTGCAAGATATCACCTTGTACAGCAGACCCCTCCACTTGAAGGACACGCAGCTC
CTGACGGCTATCCACGCTCTCCAGAACCACCGGCTGGAGGCTACAGCTGCCTCCACCTCCACCCTGC
CGGCTGGAGAGGGGCCAAGGAGGGAGAGGCTGTAGTCCTGCCAGAAGTGGAGCCTGGCCTCACCGCCCG
GGAGCAGGAGGCCACCCCGACCCAGGGAGACCACACAGCTCCCGACCACTCATCAGGCCCAACGACC
ACAGCCACCACGGCCAGGAGCCCGCCACCTCCACCCCCACAGGGACATGCAGCCTGGCCACCATGAGA
CCTCAACCCTGCAGGACCCAGCCAAGCTGACCTTCACTCCCCACACAGAGGATGGAGGTCTTCTGTC
CACCGAGAGGGCTGTGAGGATGGAGCCTCCAGTCAGCTCCCAGCAGCAGAGGGCTCTGGGGAGCAGGAC
TTCACCTTTGAAACCTCGGGGAGAATACGGCTGTAGTGGCCGTGGAGCCTGACCGCCGGAACAGTCCC
CAGTGGATCAGGGGGCCACGGGGCCTCACAGGGCCTCCTGGACAGGAAAGAGGTGCTGGGAGGGGTCAT
TGCCGTAGGCCTCGTGGGGCTCATCTTTGCTGTGTGCCTGGTGGGTTTCATGCTGTACCGCATGAAGAAG
AAGGACGAAGGCAGCTACTCCTTGGAGGAGCCGAAACAAGCCAACGGCGGGGCCCTACCAGAAGCCACCA
AACAGGAGGAATTCTATGCC

ACGCGTACGCGGCCGCTCGAGCAGAAACTCATCTCAGAAGAGGATCTGGCAGCAAATGATATCCTGGATT
ACAAGGATGACGACGATAAGGTTTAA



[View online »](#)

Protein Sequence: >RC217847 protein sequence
Red=Cloning site Green=Tags(s)

MRRAALWLWLCALALSLQPALPQIVATNLPPEDQDGGSDSDNFSGSGAGALQDITLSQQTPSTWKDTQL
 LTAIPTSPEPTGLEATAASTSTLPAGEGPKGEAVVLPVEVEPGLTAREQEATPRPRETTQLPTTHQASTT
 TATTAQEPATSHPHRDMQPGHHETSTPAGPSQADLHTPHTEDGGPSATERAAEDGASSQLPAAEGSGEQD
 FTFETSGENTAVVAVEPDRRNQSPVDQAGTASQGLLDRKEVLGGVIAVGLVGLIFAVCLVGFMLYRMKK
 KDEGSYSLEEKQANGGAYQKPTKQEEFYA

TRTRPLEQKLISEEDLAANDILDYKDDDDKV

Chromatograms: https://cdn.origene.com/chromatograms/mk6408_d07.zip

Restriction Sites: SgfI-MluI

Cloning Scheme:



ACCN: NM_001006946

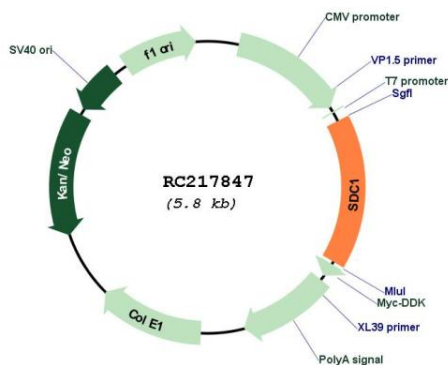
ORF Size: 930 bp

OTI Disclaimer: Due to the inherent nature of this plasmid, standard methods to replicate additional amounts of DNA in E. coli are highly likely to result in mutations and/or rearrangements. Therefore, OriGene does not guarantee the capability to replicate this plasmid DNA. Additional amounts of DNA can be purchased from OriGene with batch-specific, full-sequence verification at a reduced cost. Please contact our customer care team at custsupport@origene.com or by calling 301.340.3188 option 3 for pricing and delivery.

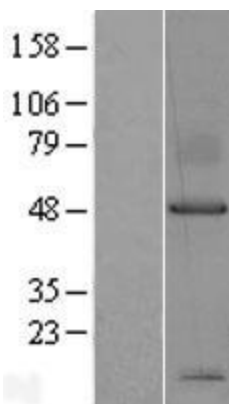
The molecular sequence of this clone aligns with the gene accession number as a point of reference only. However, individual transcript sequences of the same gene can differ through naturally occurring variations (e.g. polymorphisms), each with its own valid existence. This clone is substantially in agreement with the reference, but a complete review of all prevailing variants is recommended prior to use. [More info](#)

OTI Annotation:	This clone was engineered to express the complete ORF with an expression tag. Expression varies depending on the nature of the gene.
Components:	The ORF clone is ion-exchange column purified and shipped in a 2D barcoded Matrix tube containing 10ug of transfection-ready, dried plasmid DNA (reconstitute with 100 ul of water).
Reconstitution Method:	<ol style="list-style-type: none">1. Centrifuge at 5,000xg for 5min.2. Carefully open the tube and add 100ul of sterile water to dissolve the DNA.3. Close the tube and incubate for 10 minutes at room temperature.4. Briefly vortex the tube and then do a quick spin (less than 5000xg) to concentrate the liquid at the bottom.5. Store the suspended plasmid at -20°C. The DNA is stable for at least one year from date of shipping when stored at -20°C.
Note:	Plasmids are not sterile. For experiments where strict sterility is required, filtration with 0.22um filter is required.
RefSeq:	NM_001006946.1 , NP_001006947.1
RefSeq Size:	3309 bp
RefSeq ORF:	933 bp
Locus ID:	6382
UniProt ID:	P18827
Cytogenetics:	2p24.1
Protein Families:	Druggable Genome, ES Cell Differentiation/IPS, Transmembrane
Protein Pathways:	Cell adhesion molecules (CAMs), ECM-receptor interaction
MW:	32.5 kDa
Gene Summary:	The protein encoded by this gene is a transmembrane (type I) heparan sulfate proteoglycan and is a member of the syndecan proteoglycan family. The syndecans mediate cell binding, cell signaling, and cytoskeletal organization and syndecan receptors are required for internalization of the HIV-1 tat protein. The syndecan-1 protein functions as an integral membrane protein and participates in cell proliferation, cell migration and cell-matrix interactions via its receptor for extracellular matrix proteins. Altered syndecan-1 expression has been detected in several different tumor types. While several transcript variants may exist for this gene, the full-length nature of only two have been described to date. These two represent the major variants of this gene and encode the same protein. [provided by RefSeq, Jul 2008]

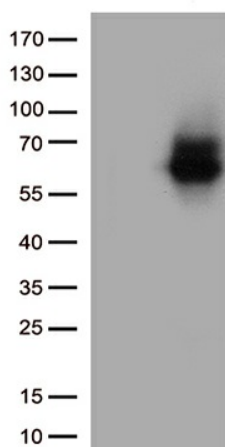
Product images:



Circular map for RC217847



Western blot validation of overexpression lysate (Cat# [LY423561]) using anti-DDK antibody (Cat# [TA50011-100]). Left: Cell lysates from untransfected HEK293T cells; Right: Cell lysates from HEK293T cells transfected with RC217847 using transfection reagent MegaTran 2.0 (Cat# [TT210002]).



HEK293T cells were transfected with the pCMV6-ENTRY control (Cat# [PS100001], Left lane) or pCMV6-ENTRY SDC1 (Cat# RC217847, Right lane) cDNA for 48 hrs and lysed. Equivalent amounts of cell lysates (5 ug per lane) were separated by SDS-PAGE and immunoblotted with anti-SDC1 antibody (Cat# [TA813780])(1:1000)