

Product datasheet for RC217846

Collagen IV (COL4A2) (NM_001846) Human Tagged ORF Clone

Product data:

Product Type:	Expression Plasmids
Product Name:	Collagen IV (COL4A2) (NM_001846) Human Tagged ORF Clone
Tag:	Myc-DDK
Symbol:	Collagen IV
Synonyms:	BSVD2; ICH; POREN2
Mammalian Cell Selection:	Neomycin
Vector:	pCMV6-Entry (PS100001)
E. coli Selection:	Kanamycin (25 ug/mL)
ORF Nucleotide Sequence:	>RC217846 representing NM_001846 Red=Cloning site Blue=ORF Green=Tags(s)

TTTTGTAATACGACTCACTATAGGGCGGCCGGAATTCGTCGACTGGATCCGGTACCGAGGAGATCTGCC
GCC**CGATCGCC**

ATGGGGAGAGACCAGCGCGCGTGGCCGGCCCTGCCCTACGGCGGTGGCTGCTGCTGGGGACAGTGACCG
TGGGGTTCCTCGCCAGAGCGTCTTGGCGGTGTGAAGAAGTTTGTATGTGCCGTGTGGAGGAAGAGATTG
CAGTGGGGGTGCCAGTGTACCTGAGAAAGGTGGACGTGGTCAGCCTGGGCCAGTGGCCCCCAGGGG
TACAATGGGCCACCAGGATTACAAGGATCCCGGGACTGCAGGGACGTAAGGAGACAAGGGTGAAGGG
GAGCCCCCGAGTAACGGGACCAAGGGCGACGTGGGAGCAAGAGCGTTTCTGGATTCCCTGGTGCCGA
TGGAAATCCTGGACACCCGGGGCAAGGTGGGCCAGGGGAAGGCCGGGCTACGATGGCTGCAACGGAACC
CAGGGAGACTCAGGTCCACAGGGGCCCCCGGCTCTGAGGGGTTACCGGGCCTCCCGGGCCCAAGGAC
CAAAGGGCAGAAAGGTGAGCCTTATGCACTGCCTAAAGAGGAGCGCAGATATCGGGGTGAACCTGG
AGAGCCTGGATTGGTCGGTTTCCAGGGACCTCCCGGCCGCTGGGCATGTGGGACAGATGGGTCCAGTT
GGAGCTCCAGGGAGACCAGGACCCTGGACCCCTGGACAAAAGGACAGCAAGGCAACAGAGGACTTG
GTTTCTACGGAGTTAAGGGTGAAAAGGGTGACGTAGGGCAGCCGGGACCAACGGGATCCATCAGACAC
CCTCCACCCCATCATCGCGCCACAGGAGTCACCTTCCACCCAGATCAGTACAAGGGTGAAAAGGCAGT
GAGGGGAACCAGGAATAAGAGGCATTTCTTGAAGGGAGAAGAAGGAATCATGGGCTTTCCTGGACTGA
GGGTTACCCTGGCTTGAGTGGTGAAGGATCACCAGGACAGAAAGGGAAGCCGAGGCCTGGATGGCTA
TCAAGGGCCTGATGGACCCCGGGACCAAGGGAGAAGCCGGAGACCCAGGGCCCCCTGGACTACCTGCC
TACTCCCCTCACCTTCCCTAGCAAAAGGTGCCAGAGGTGACCCGGGATCCAGGGGCCCAAGGGGAGC
CAGGAAGCCAGGGTGAAGCAGGAGACCCGGGCTCCAGGTCCCCTGGCCTCTCCATCGGAGATGGAGA
TCAGAGGAGAGGCTGCCGGGTGAGATGGGACCAAGGGCTTATCGGAGACCCCGGCATCCCTGCGCTC
TACGGGGCCACCTGGACCTGATGAAAGCGAGGGCCTCCAGGACCCCGGGCTCCCTGGACCACCTG
GACCTGATGGCTTCTGTTGGGCTGAAAGGAGCAAAAGGAAGAGCAGGCTTCCCTGGGCTTCCCGGCTC
CCCTGGAGCCCGGACCAAGGGGTGAAAGGTGACGCTGGGAATGCAGATGTACAGAAGGCGACGAA



[View online »](#)

GCTATCAAAGGTCTTCCGGGACTGCCAGGACCCAAGGGCTTCGCAGGCATCAACGGGGAGCCGGGGAGGA
AAGGGGACAGAGGAGACCCCGGCAACACGGCCTCCCTGGTTCCAGGGCTCAAGGGAGTGCCTGGCAA
CATTGGTGCTCCCGGACCCAAAGGAGCAAAAGGAGATTCCAGAACAATCACAACCAAAGGTGAGCCGGGA
CAGCCCGGCGTCCAGGTGTGCCGGATGAAAGGTGACGATGGCAGCCAGGCCGATGGGCTCGATG
GATTCCCGGCCCTCCAGGCCCTCCCGTGATGGCATCAAGGGCCCTCCAGGGGACCCAGGCTATCCAGG
AATACCTGGAACGAAGGGTACTCCAGGAGAAATGGCCCCCAGGACTGGGCCTTCCCGCCTCAAAGGC
CAACGTGGTTCCCTGGAGACGCCGGCTTACCTGGACCACAGGCTTCCCTGGCCCTCTGGCCCCGAC
GGACCCAGGACAAATAGATTGTGACACAGATGTGAAAAGGGCCGTTGGAGGTGACAGACAGGAGGCCAT
CCAGCCAGGTTGCATAGGAGGGCCAAAGGATTGCCAGGCCTGCCAGGACCCCCAGGCCCCACAGGTGCC
AAAGGCCTCCGAGGAATCCAGGCTTCGCAGGAGCTGATGGAGGACCAGGGCCAGGGGCTTCCAGGAG
ACGCAGGTGCGAAGGGTCCAGGACCCCGAGGTTTATAGGACCCCGAGGATCCAAAGGTGCAGTGGG
CCTCCCTGGCCAGATGGATCCCGAGTCCATCGGCCTGCCAGGGCCAGATGGGCCCTTGGGAAAGG
GGCCTCCCTGGAGAAGTCTGGGAGCTCAGCCGGGCCACGGGGAGATGCTGGTGTGCTGGACAGCCTG
GGCTTAAAGGCCTTCCCGGAGACAGAGGCCCCCTGGATTAGAGGAAGCCAAGGGATGCCTGGGATGCC
AGGGCTGAAGGGCCAGCCAGGCCTCCAGGACCTTCCGGCCAGCCAGGCCTGTATGGGCCTCCAGGACTG
CATGGATTCCAGGAGCTCCTGGCCAAGAGGGGCCCTTGGGGCTGCCAGGAATCCAGGCCGTGAAGGTC
TGCTGGTGTAGAGGGGACCCTGGGGACACAGGCCTCCTGGCCCTGTGGGCATGAAAGGTCTCTCTGG
TGACAGAGGAGATGCTGGCTTACAGGGGAGCAAGGCCATCCAGGAAGCCCTGGATTTAAAGGAATTGAT
GGAATGCCTGGGACCCCGGGCTAAAAGGAGATAGAGGCTCACCTGGGATGGATGGTTTCCAAGGCATGC
CTGGACTCAAAGGGAGACCCGGGTTTCCAGGGAGCAAAGGCGAGGCTGGATTTTTCGGAATACCCGGTCT
GAAGGGTCTGGCTGGTGAGCCAGTTTTAAAGGACGCCAGGGGACCCTGGGCCCCAGGACCACCTCCT
GTCATCCTGCCAGGAATGAAAGACATTAAGGAGAGAAAGGAGATGAAGGGCCTATGGGGCTGAAAGGAT
ACCTGGGCGCAAAAGGTATCCAAGGAATGCCAGGCATCCAGGGCTGTGAGGAATCCCTGGGCTCCTGG
GAGGCCCGGCCACATCAAAGGAGTCAAGGGAGACATCGGAGTCCCGGCATCCCGGTTTGGCAGGATTC
CCTGGGGTGGCTGGCCCCCTGGAATTACGGGATTCCAGGATTCATAGGAAGCCGGGTGACAAAGGTG
CCCCAGGGAGAGCAGGCCTGTATGGCGAGATTGGCGGACTGGTATTTCGGTGACATCGGGGACACTAT
AAATTTACCAGGAAGACCAGGCCTGAAGGGGGAGCGGGGACCCTGGAATACCAGGTCTGAAGGGATTC
TTTGGAGAGAAGGAACAGAAGGTGACATCGGCTTCCCTGGGATAACAGGCGTACTGGAGTCCAAGGCC
CTCCTGGACTTAAAGGACAAACAGGCTTCCAGGGCTGACTGGGCCTCCAGGGTCGACGGAGAGCTGGG
GCGGATTGGACTGCCTGGTGGCAAAGGAGATGATGGCTGGCCGGGAGCTCCGGGTTACCAGTTTTCCG
GGACTCCGTGGGATCCGGGCTTACACGGCTTCCAGGCACCAAGGGCTTCCAGGATCCCAGGTTCTG
ACATCCAGGAGACCCAGGCTTCCAGGCCCTCCTGGGAAAGAGGTGACCCAGGAGAGGGCAACACCCCT
TCCAGGCCCTGTGGGAGTCCCAGGACAGAAAGGAGACCAAGGAGCTCCAGGGGAACGAGGCCACCTGGG
AGCCCAGGACTTCAAGGGTTCCAGGCATCACACCCCTTCCAACATCTCTGGGGCACCTGGTGACAAAAG
GGGCGCCAGGGATATTTGGCCTGAAAGGTTATCGGGGCCACCAGGGCCACCAGGTTCTGCTGCTTCC
TGGAAAGCAAAGGTGACACAGGGAACCCAGGAGCTCCAGGAACCCAGGGACCAAAGGATGGGCCGGGAC
TCCGGGCCCCAGGGCAGGCCTGGTGTGTTGGTCTCCAGGAGAAAAAGGGCCAGGGGTGAACAAGGCT
TCATGGGGAACACTGGACCCACCGGGCGGTGGGCGACAGAGGCCCAAGGGACCAAGGGAGAGCCAGG
ATTCCTGGTGCCCGGGACTGTGGAGCCCCGGGATTGACAGGAATCCCCAGAAGATTGCCGTCCAA
CCAGGGACAGTGGTCCCAAGGGAGGCGAGGCCCTTGGGGCACCGGGGAGATGGGGCCCAAGGGCC
CCCCCGGAGAACCAGTTTTCTGGGGTCCAGGAAAGCTGGGCCCAAGGAAGAGGTGGTGTGCTGC
TGTTCGGCTTCCGGGAGATGAAGGACCCATAGGCCACCAGGGGCCGATTGGCCAAGAAGGTGCACCA
GGCCGTCCAGGGAGCCCGGGCTGCCGGTATGCCAGGCCGACGCTCAGCATCGGCTACCTCCTGGTGA
AGCACAGCCAGACGACCAGGAGCCATGTGCCAGTGGGCATGAACAACTCTGGAGTGGATACAGCCT
GCTGTACTTCAGGGCCAGGAGAAGGCGCACACCAGGACCTGGGGCTGGCGGGCTCCTGCCTGGCGGG
TTCAGCACCATGCCCTTCTGTACTGCAACCTGGTGTGTCTGCTACTATGCCAGCCGGAACGACAAGT
CCTACTGGCTCTACTACTGCGCGCTGCCATGATGCCCGTGGCCGAGGACGAGATCAAGCCCTACAT
CAGCCGCTGTTCTGTGTGTGAGGCCCGGCCATGCCATCGCGGTCCACAGTCAGGATGTCTCCATCCCA
CACTGCCAGCTGGGTGGCGGAGTTTGGGATCGGATATTCCTTCTCATGCACACGGCGCGGGAGACG
AAGCGGTGGCCAATCACTGGTGTACCGGGCAGCTGTCTAGAGGACTTCCGCGCCACACCATTCATCGA
ATGCAATGGAGGCCGCGGCACCTGCCACTACTACGCCAACAGTACAGCTTCTGGCTGACCACCATTC
GAGCAGAGCTTCCAGGGCTCGCCTCCGGCAGACGCTCAAGGCCGGCTCATCCGCACACATCAGCC

GCTGCCAGGTGTGCATGAAGAACCTG

ACGCGTACGCGGCCGCTCGAGCAGAACTCATCTCAGAAGAGGATCTGGCAGCAATGATATCCTGGATT
ACAAGGATGACGACGATAAGGTTTAA

Protein Sequence:

>RC217846 representing NM_001846
Red=Cloning site Green=Tags(s)

MGRDQRAVAGPALRRWLLLTGTVTVGFLAQSVLAGVKKFDVPCGGRDCSGGCQCYPEKGGRGQPGPVGPQG
YNGPPGLQGFPLQGRKGDKGERGAPVGTGPKGDVARGVSGFPGADGIPGHGQGGPRGRPGYDGCNGT
QGDSGPQGPPESEGTGPPGPQGPQKQKGEYALPKEERDRYRGEPEGLVGFQGGPRGHVGMGPV
GAPGRPGPPGPPGPKGQGNRGLGFYGVKGEKGDVQGPNGIPSDTLHPHIIAPTGVTFHPDQYKGEKGS
EGEPGIRGISLKGEEGIMGFPLRGYPGLSGEKSPGQKGSRLDGYQGGPDGPRGPKGEAGDPGPPGLPA
YSPHPSLAKGARGDPGFPGAQGEPSQGEPPDGLPGPPGLSIGDGDQRRGLPGEMGPKGFIGDGPGL
YGGPPGPDGKRGPPGPPGLPGPPGPDGFLFGLKGAAGRAGFPGLPGSPGARGPKGKGDAGECRCTEGDE
AIKGLPGLPGPKGFAGINGEPGRKGRDGPQHGLPGFPGLKGVPGNIGAPGPKGAKGDSRTITTKGERG
QPGVGPVPMKGGDGGSPGRDGLDGFPLPGPPGDGIKGGPDGYPGIPGTGTPGEMGPPGLGLPGLK
QRGFPGDAGLPGPPGFLGPPGAGTPGQIDCDTDVKRAVGGDRQEAIQPGCIGGPKGLPGLGPPGPTGA
KGLRGIPIGFAGADGGPGPRGLPGDAGREGFPPGPFIPRGSKGAAGVLPDGSPPGIPGLPGDGPGER
GLPGEVLGAQPGPRGDAGVPGQGLKGLPGDRGPPGFRGSQGMPPGLKQPGPLPGSPGQPLGYPPGL
HGFPGAPGQEGPLGLPIPGREGLPGDRGPDGTGAPGVGMKGLSGDRGDAGFTGEQGHGSPGFKGID
GMPGTPGLKGRGSPGMDGFQGMPLKGRPGFPGSKGEAGFFGIPGLKGLAGEPGFKGSRGDPGPPGPP
VILPGMKDIKGEKDEGPMGLKGYLGAAGIQQMPGIPGLSGIPGLPGRPGHIKGVKGDIGVPGIPGLPGF
PGVAGPPGITGFPFISRGDKGAPGRAGLYGEIGATGDFGDI GDTINLGRPGLKGERGTTGIPGLKGF
FGEKTEGDI GFGITGVTGVQPPGLKQGTGFPGLTGPPTSQELGRIGLPGGKGGDWPAGPLPGFP
GLRGIRGLHGLPGTKGFPSPGSDIHGDPGFPGERGDPGEANTLPGPVGVGQKGDQGAPGERGPPG
SPGLQGFPGITPPSNISGAPGDKGAPGIFGLKGYRGGPPGSAALPGSKGDTGNPGAPGTPGTGWAGD
SGPQGRPVFGLPGEKGRGEQGFMGNTGPTGAVGDRGPKGPKGDPGFPGAPGTGAPGIAIPQKIAVQ
PGTVGPQGRGPPGAPGEMGPQPPGEPGFRGAPGKAGPQGRGGVSAVPGFRGDEGPIGHQGP IQEGAP
GRPGSPGLPGMPGRSVSIGYLLVKHSQTDQEPMCPVGMNKLWSGYSLLYFEGQEKAHNQDLGLAGSCLAR
FSTMPFLYCNPGDVCYYASRNDKSYWLSTTAPLPMMPVAEDEIKPYISRCSVCEAPAI AIAVHSQDVSIP
HCPAGWRSWIGYSFLMHTAAGDEGGGQSLVSPGSCLEDFRATPFIECNGGRGTCHYYANKYSFWLTTIP
EQSFQGSADTLKAGLIRTHISRCQVCMKNL

TRTRPLEQKLISEEDLAANDILDYKDDDDKV

Chromatograms:

https://cdn.origene.com/chromatograms/mk8007_g01.zip

Restriction Sites:

SgfI-MluI

Cloning Scheme:


ACCN: NM_001846

ORF Size: 5136 bp

OTI Disclaimer: The molecular sequence of this clone aligns with the gene accession number as a point of reference only. However, individual transcript sequences of the same gene can differ through naturally occurring variations (e.g. polymorphisms), each with its own valid existence. This clone is substantially in agreement with the reference, but a complete review of all prevailing variants is recommended prior to use. [More info](#)

OTI Annotation: This clone was engineered to express the complete ORF with an expression tag. Expression varies depending on the nature of the gene.

Components: The ORF clone is ion-exchange column purified and shipped in a 2D barcoded Matrix tube containing 10ug of transfection-ready, dried plasmid DNA (reconstitute with 100 ul of water).

Reconstitution Method:

1. Centrifuge at 5,000xg for 5min.
2. Carefully open the tube and add 100ul of sterile water to dissolve the DNA.
3. Close the tube and incubate for 10 minutes at room temperature.
4. Briefly vortex the tube and then do a quick spin (less than 5000xg) to concentrate the liquid at the bottom.
5. Store the suspended plasmid at -20°C. The DNA is stable for at least one year from date of shipping when stored at -20°C.

RefSeq: [NM_001846.3](#), [NP_001837.2](#)

RefSeq Size: 6276 bp

RefSeq ORF: 5139 bp

Locus ID: 1284

UniProt ID: [P08572](#)

Cytogenetics: 13q34

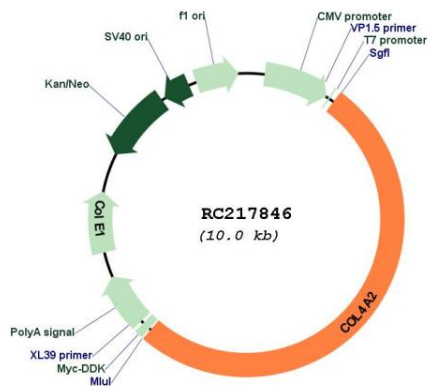
Protein Families: Transmembrane

Protein Pathways: ECM-receptor interaction, Focal adhesion, Pathways in cancer, Small cell lung cancer

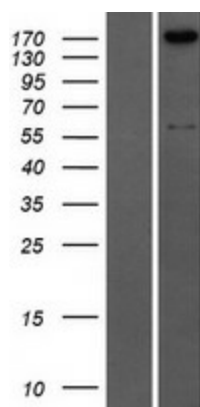
MW: 167.55 kDa

Gene Summary: This gene encodes one of the six subunits of type IV collagen, the major structural component of basement membranes. The C-terminal portion of the protein, known as canstatin, is an inhibitor of angiogenesis and tumor growth. Like the other members of the type IV collagen gene family, this gene is organized in a head-to-head conformation with another type IV collagen gene so that each gene pair shares a common promoter. [provided by RefSeq, Jul 2008]

Product images:



Circular map for RC217846



Western blot validation of overexpression lysate (Cat# [LY419704]) using anti-DDK antibody (Cat# [TA50011-100]). Left: Cell lysates from untransfected HEK293T cells; Right: Cell lysates from HEK293T cells transfected with RC217846 using transfection reagent MegaTran 2.0 (Cat# [TT210002]).