

Product datasheet for **RC217845**

CLEC9A (NM_207345) Human Tagged ORF Clone

Product data:

Product Type: Expression Plasmids
Product Name: CLEC9A (NM_207345) Human Tagged ORF Clone
Tag: Myc-DDK
Symbol: CLEC9A
Synonyms: CD370; DNNGR-1; DNNGR1; UNQ9341
Mammalian Cell Selection: Neomycin
Vector: pCMV6-Entry (PS100001)
E. coli Selection: Kanamycin (25 ug/mL)
ORF Nucleotide Sequence: >RC217845 representing NM_207345
Red=Cloning site Blue=ORF Green=Tags(s)

TTTTGTAATACGACTCACTATAGGGCGGCCGGAATTCGTCGACTGGATCCGGTACCGAGGAGATCTGCC
GCC**CGATCGCC**

ATGCACGAGGAAGAAATATACACCTCTCTTCAGTGGGATAGCCCAGCACCAGACACTTACCAGAAATGTC
TGTCTTCCAACAAATGTTCCAGGAGCATGCTGTCTTGTGATGGTGATTTTCATGTGTTTTCTGCATGGGATT
ATTAACAGCATCCATTTCTTGGCGTCAAGTTGTTGCAGGTGCCACCATTGCGATGCAGCAGCAAGAA
AAACTCATCCAACAAGAGAGGGCACTGCTAAACTTTACAGAATGGAAGAGAAGCTGTGCCCTTCAGATGA
AATATTGCCAAGCCTTCATGCAAACTCATTAAAGTTTCAGCCATAACAGCAGTCCTTGTCCAACAATTG
GATTTCAGAACAGAGAAAGTTGTTACTATGTCTCTGAAATTTGGAGCATTGGCACACCAGTCAAGAGAAT
TGTTTAAAGGAAGTTCCACGCTGCTACAAATAGAGAGCAAGAAGAAATGGATTTTACTGTCAGCT
TGAGGAAGATTAAGGAAGCTATGATTACTGGGTGGGTTGTCTCAGGATGGACACAGCGGACGCTGGCT
TTGGCAAGATGGCTCCTCTCCTTCTCCTGGCCTGTTGCCAGCAGAGAGATCCCAGTCAGCTAACCAAGTC
TGTGGATACGTGAAAAGCAATTCCTTCTTTCGTCTAACTGCAGCACGTGGAAATTTTTATCTGTGAGA
AGTATGCGTTGAGATCCTCTGTC

ACGCGTACGCGGCCGCTCGAGCAGAACTCATCTCAGAAGAGGATCTGGCAGCAAATGATATCCTGGATT
ACAAGGATGACGACGATAAGGTTTAA



[View online »](#)

Protein Sequence: >RC217845 representing NM_207345
 Red=Cloning site Green=Tags(s)

MHEEEIYTSLQWDSPAPDTYQKCLSSNKCSGACCLVMVISCVFCMGLLTASIFLGVKLLQVSTIAMQQQE
 KLIQGERALLNFTEWKRSALQMKYCAFMQNSLSSAHNSPCPNWVQRESCYYVSEIWSIWHTSQEN
 CLKKEGSTALLQIESKEEMDFITGSLRKIKGSYDYVWGLSQDGHSGRWLWQDGGSSPSPLLP AERSQSANQV
 CGYVKSNSLLSSNCSTWKYFICEKYALRSSV

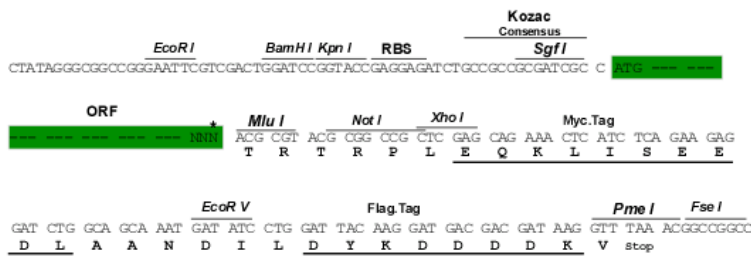
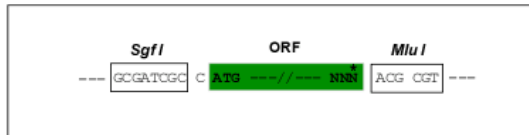
TRTRPLEQKLI SEEDLAANDILDYKDDDDKV

Chromatograms: https://cdn.origene.com/chromatograms/mk8014_b10.zip

Restriction Sites: SgfI-MluI

Cloning Scheme:

Cloning sites used for ORF Shuttling:



* The last codon before the Stop codon of the ORF

ACCN: NM_207345

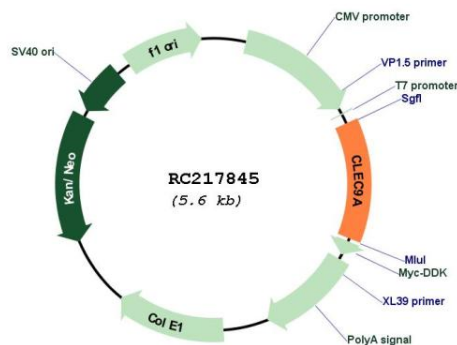
ORF Size: 723 bp

OTI Disclaimer: Due to the inherent nature of this plasmid, standard methods to replicate additional amounts of DNA in E. coli are highly likely to result in mutations and/or rearrangements. Therefore, OriGene does not guarantee the capability to replicate this plasmid DNA. Additional amounts of DNA can be purchased from OriGene with batch-specific, full-sequence verification at a reduced cost. Please contact our customer care team at custsupport@origene.com or by calling 301.340.3188 option 3 for pricing and delivery.

The molecular sequence of this clone aligns with the gene accession number as a point of reference only. However, individual transcript sequences of the same gene can differ through naturally occurring variations (e.g. polymorphisms), each with its own valid existence. This clone is substantially in agreement with the reference, but a complete review of all prevailing variants is recommended prior to use. [More info](#)

OTI Annotation: This clone was engineered to express the complete ORF with an expression tag. Expression varies depending on the nature of the gene.

Components:	The ORF clone is ion-exchange column purified and shipped in a 2D barcoded Matrix tube containing 10ug of transfection-ready, dried plasmid DNA (reconstitute with 100 ul of water).
Reconstitution Method:	<ol style="list-style-type: none"> 1. Centrifuge at 5,000xg for 5min. 2. Carefully open the tube and add 100ul of sterile water to dissolve the DNA. 3. Close the tube and incubate for 10 minutes at room temperature. 4. Briefly vortex the tube and then do a quick spin (less than 5000xg) to concentrate the liquid at the bottom. 5. Store the suspended plasmid at -20°C. The DNA is stable for at least one year from date of shipping when stored at -20°C.
RefSeq:	<u>NM_207345.4</u>
RefSeq Size:	1674 bp
RefSeq ORF:	726 bp
Locus ID:	283420
UniProt ID:	<u>Q6UXN8</u>
Cytogenetics:	12p13.2
Protein Families:	Transmembrane
MW:	27.1 kDa
Gene Summary:	CLEC9A is a group V C-type lectin-like receptor (CLR) that functions as an activation receptor and is expressed on myeloid lineage cells (Huysamen et al., 2008 [PubMed 18408006]). [supplied by OMIM, Aug 2008]

Product images:


Circular map for RC217845