

Product datasheet for **RC217842**

C19orf2 (URI1) (NM_003796) Human Tagged ORF Clone

Product data:

Product Type:	Expression Plasmids
Product Name:	C19orf2 (URI1) (NM_003796) Human Tagged ORF Clone
Tag:	Myc-DDK
Symbol:	C19orf2
Synonyms:	C19orf2; NNX3; PPP1R19; RMP; URI
Mammalian Cell Selection:	Neomycin
Vector:	pCMV6-Entry (PS100001)
E. coli Selection:	Kanamycin (25 ug/mL)



[View online »](#)

ORF Nucleotide Sequence:

>RC217842 representing NM_003796
 Red=Cloning site Blue=ORF Green=Tags(s)

TTTTGTAATACGACTCACTATAGGGCGGCCGGGAATTCGTCGACTGGATCCGGTACCGAGGAGATCTGCC
 GCC**CGCATCGCC**

ATGGAGGCGCCACCGTGGAGACGCCCCCGACCCTCGCCCCCTTCGGCCCCGGCCCTGCCCTGGTTC
 CGTTGCGCGCCCCGATGTGGCGGGCTGCGCGAGGAGCAGGAAAAGGTGGTCACTAACTGCCAAGAGAG
 AATCCAGCATTGGAAGAAGGTAGATAATGACTATAATGCCCTTCGAGAAAAGACTCAGCACCTTGCTGAT
 AAATTGCTTATAATATAATGGTACCATTTGGCCCTTTTGCCTTCATGCCAGAAAACTTGCCATACTA
 ATGAAGTCACTGTTTACTGGGGGACAACGGTTTGCAAAGTGCTCAGCAAAGCAGGCTGTAGGTTTAGT
 TGAGCACCGGAAAGAACATGTAAGAAAAACAATAGATGACTTAAAAAAGTGATGAAAAATTTTGAATCC
 AGAGTTGAATTCACAGAAGATTTGCAGAAAATGAGCGATGCTGCAGGTGATATTGTTGACATACGAGAAG
 AAATTAATGTGACTTCGAATTTAAAGCAAACACCGAATTGCTCATAAACCGCATTCCAAACAAAAAC
 TTCAGATATTTTGAAGCAGATATTGCAAATGATGTGAAATCCAAGATTGCTAGCTGATAAAGAAGCTG
 TGGGCTCGACTTGAAAGACTAGAGAGACAGGAAGAATTGCTGGGTGAACCTTGATAGTAAGCTGATACTG
 TGATTGCAAAATGGAGAAGATACGACATCTTCTGAAGAGGAAAAGGAAGATCGTAACACAAATGTGAATGC
 GATGCATCAAGTAACAGACTCTCATACTCCTTGTGATAAGGATGTTGCAAGTTCAGAACCATTCACTGGT
 CAAGTGAATAGTCAGTTGAACTGTTCACTGAAATGGTCCAGTCTTACCACAGTATGATGATGATGATG
 ATGATGATGACGACGACGACGACAACATTGACGACGATGATGGTGATAACGACCATGAGGCTTTAGGGGT
 TGGAGATAATTCTATACCAACAATATATTTTTCACATACTGTTGAGCCTAAGAGGGTCCGAATAAATACT
 GGAAAGAATACCACTTTAAAATTCAGTAAAAAGAAAGAAAGCCAAACGTAAACGAAAGAACAGCACTG
 CGAGTGGCCACTCTGCCAGGAGCTGCCACCATCAGGACGCTGCAGACATTTACAGAGCCTTTGTTGA
 TGTGTGAATGGAGAATATGTCCCTCGCAAATCCATCCTGAAGTCTCGAAGTAGAGAGAATAGTGTGTGT
 AGCGACACTAGTGAAGCAGTGCTGCTGAATTTGATGATAGGCGGGGAGTTTTGAGGAGTATCAGCTGCG
 AAGAAGCCACTTGCAAGTACACAGTACAGGATTTTGGAAAGGGAACCAAGAAAATCAAAGAACT
 TTTGCCCTTATCAGTAACACCTGAGGCTTTTTCTGGAAGTGTATAGAAAAAGAAATTTGTATCACCTTCC
 TTAACACCACCCAGCCATTGCTCATCCGCACTACCCACTATTCCAGAACGAAAGGAAGTTCTGTTGG
 AAGCATCTGAAGAACTGAAAGAGGGTTTCAAAGTTAAAGCTGCCAGATTGCAACAGAAAGAC

ACGCGTACGCGGCCGCTCGAGCAGAAACTCATCTCAGAAGAGGATCTGGCAGCAAATGATATCCTGGATT
 ACAAGGATGACGACGATAAGGTTTAA

Protein Sequence:

>RC217842 representing NM_003796
 Red=Cloning site Green=Tags(s)

MEAPTVEPPDPSPSPAPALVPLRAPDVARLREEQEKVVTNCQERIQHWKVDNDYNALRERLSTLPD
 KLSYNIMVPFGPFAFMPGKLVHTNEVTVLLGDNWF AKCSAKQAVGLVEHRKEHVRKTIDDLKVMKNFES
 RVEFTEDLQKMSDAAGDIVDIREEIKCDFEFKAKHRIAHPKPKTSDIFEADIANDVSKDLLADKEL
 WARLEELERQEELLGELDSKPDTVIANGEDTTSSEEEKEDRNTNVNAMHQVTDSTPCHKDVASSEPFSG
 QVNSQLNCSVNGSSSYHSDDDDDDDDDDDNIDDDGDNDHEALGVGDNSIPTIYFSHTVEPKRVRINT
 GKNTTLKFSEKKEEAKRKRKNSTGSGHSAQELPTIRTPADIYRAFVDVNGEYVPRKSILKSRSRENSVC
 SDTSESSAAEFDDRRGVLRSISCEEATCSDTSESILEEEEPQENQKLLPLSVTPEAFSGTVIEKEFVSPS
 LTPPPAIAHPALPTIPERKEVLLLEASEETGKRVSFKFAARLQKQD

TRTRPLEQKLISEEDLAANDILDYKDDDDKV

Chromatograms:

https://cdn.origene.com/chromatograms/mk8066_a04.zip

Restriction Sites:

Sgfl-MluI

Cloning Scheme:


ACCN: NM_003796

ORF Size: 1605 bp

OTI Disclaimer: The molecular sequence of this clone aligns with the gene accession number as a point of reference only. However, individual transcript sequences of the same gene can differ through naturally occurring variations (e.g. polymorphisms), each with its own valid existence. This clone is substantially in agreement with the reference, but a complete review of all prevailing variants is recommended prior to use. [More info](#)

OTI Annotation: This clone was engineered to express the complete ORF with an expression tag. Expression varies depending on the nature of the gene.

Components: The ORF clone is ion-exchange column purified and shipped in a 2D barcoded Matrix tube containing 10ug of transfection-ready, dried plasmid DNA (reconstitute with 100 ul of water).

- Reconstitution Method:**
1. Centrifuge at 5,000xg for 5min.
 2. Carefully open the tube and add 100ul of sterile water to dissolve the DNA.
 3. Close the tube and incubate for 10 minutes at room temperature.
 4. Briefly vortex the tube and then do a quick spin (less than 5000xg) to concentrate the liquid at the bottom.
 5. Store the suspended plasmid at -20°C. The DNA is stable for at least one year from date of shipping when stored at -20°C.

Note: Plasmids are not sterile. For experiments where strict sterility is required, filtration with 0.22um filter is required.

RefSeq: [NM_003796.3](#)

RefSeq Size: 2295 bp

RefSeq ORF: 1608 bp

Locus ID: 8725

UniProt ID: [O94763](#)

Cytogenetics: 19q12

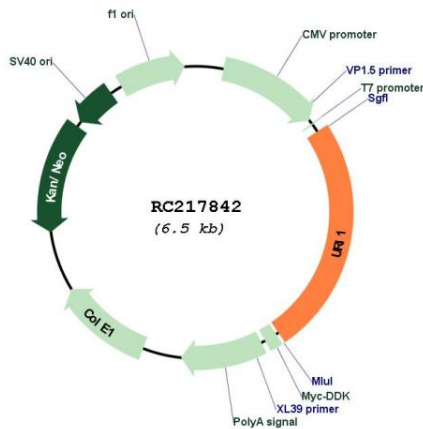
Domains: DUF232

Protein Families: Transcription Factors

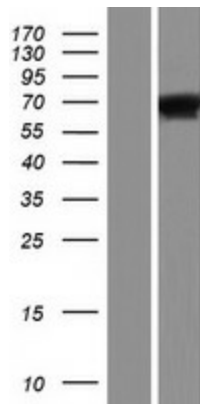
MW: 59.7 kDa

Gene Summary: This gene encodes member of the prefoldin family of molecular chaperones. The encoded protein functions as a scaffolding protein and plays roles in ubiquitination and transcription, in part through interactions with the RNA polymerase II subunit RPB5. This gene may play a role in multiple malignancies including ovarian cancer and hepatocellular carcinoma. Alternatively spliced transcript variants encoding multiple isoforms have been observed for this gene, and a pseudogene of this gene is located on the long arm of chromosome 22. [provided by RefSeq, Nov 2011]

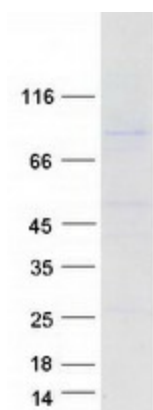
Product images:



Circular map for RC217842



Western blot validation of overexpression lysate (Cat# [LY418431]) using anti-DDK antibody (Cat# [TA50011-100]). Left: Cell lysates from untransfected HEK293T cells; Right: Cell lysates from HEK293T cells transfected with RC217842 using transfection reagent MegaTran 2.0 (Cat# [TT210002]).



Coomassie blue staining of purified URI1 protein (Cat# [TP317842]). The protein was produced from HEK293T cells transfected with URI1 cDNA clone (Cat# RC217842) using MegaTran 2.0 (Cat# [TT210002]).