

Product datasheet for **RC217831**

MIA40 (CHCHD4) (NM_001098502) Human Tagged ORF Clone

Product data:

Product Type: Expression Plasmids
Product Name: MIA40 (CHCHD4) (NM_001098502) Human Tagged ORF Clone
Tag: Myc-DDK
Symbol: CHCHD4
Synonyms: MIA40; TIMM40
Mammalian Cell Selection: Neomycin
Vector: pCMV6-Entry (PS100001)
E. coli Selection: Kanamycin (25 ug/mL)
ORF Nucleotide Sequence: >RC217831 representing NM_001098502
Red=Cloning site Blue=ORF Green=Tags(s)

TTTTGTAATACGACTCACTATAGGGCGGCCGGAATTCGTCGACTGGATCCGGTACCGAGGAGATCTGCC
GCC**CGATCGCC**

ATGTCCTATTGCCGGCAGGAAGGAAGGATCGAATCATATTTGTAACCAAGAAGATCATGAACTCCAA
GCAGTGCAGAATTGGTGGCTGATGACCCCAACGATCCATACGAGGAGCATGGATTGATACTGCCAAATGG
AAACATTAAGTGGAACTGCCATGCCTTGGGGGAATGGCCAGCGGTCCCTGTGGAGAACAGTTTAAGTCA
GCCTTTTCTGCTTCCACTATAGCACGGAGGAGATCAAGGGGTGCACTGTGTAGACCAGTTCGGGCCA
TGCAGGAATGCATGCAGAAATACCCAGACCTCTATCCCCAAGAGGATGAGGATGAGGAAGAGGAAAGAGA
GAAGAAGCCAGCAGAACAAGCAGAAGAAACAGCTCCCATTGAGGCCACTGCAACCAAGAAGAGGAGGGA
TCAAGT

ACGCGTACGCGGCCGCTCGAGCAGAACTCATCTCAGAAGAGGATCTGGCAGCAAATGATATCCTGGATT
ACAAGGATGACGACGATAAGGTTTAA

Protein Sequence: >RC217831 representing NM_001098502
Red=Cloning site Green=Tags(s)
MSYCRQEGKDRIIFVTKEDHETPSSAELVADDPNDPYEEHGLILPNGNINWNCPLGGMASGPCGEQFKS
AFSCFHYSTEEIKGSDCVQDQFRAMQECMQKYPDLYPQEDEDEEEEREKKPAEQAEETAPIEATATKEEEG
SS

TRTRPLEQKLISEEDLAANDILDYKDDDDKV

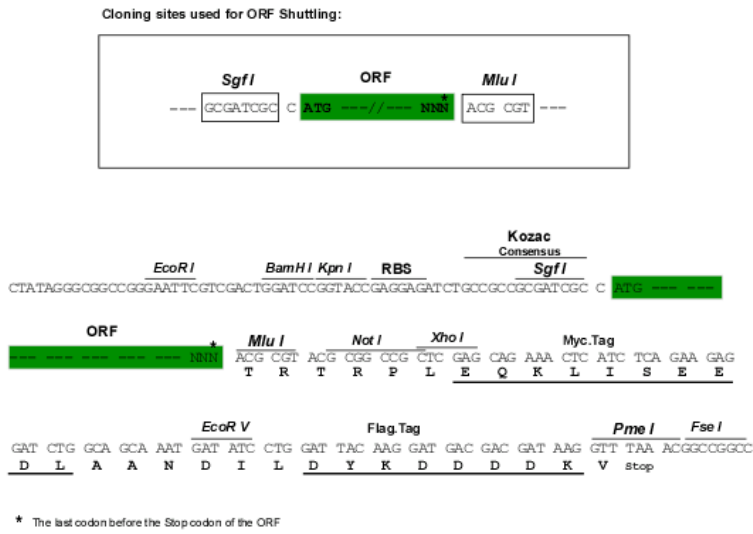
Chromatograms: https://cdn.origene.com/chromatograms/mg4226_d09.zip



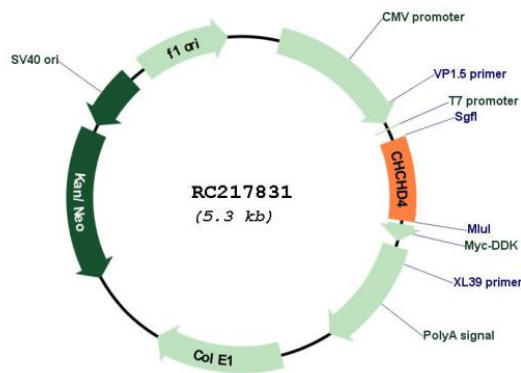
[View online >](#)

Restriction Sites: SgfI-MluI

Cloning Scheme:



Plasmid Map:



ACCN: NM_001098502

ORF Size: 426 bp

OTI Disclaimer: Due to the inherent nature of this plasmid, standard methods to replicate additional amounts of DNA in E. coli are highly likely to result in mutations and/or rearrangements. Therefore, OriGene does not guarantee the capability to replicate this plasmid DNA. Additional amounts of DNA can be purchased from OriGene with batch-specific, full-sequence verification at a reduced cost. Please contact our customer care team at custsupport@origene.com or by calling 301.340.3188 option 3 for pricing and delivery.

The molecular sequence of this clone aligns with the gene accession number as a point of reference only. However, individual transcript sequences of the same gene can differ through naturally occurring variations (e.g. polymorphisms), each with its own valid existence. This clone is substantially in agreement with the reference, but a complete review of all prevailing variants is recommended prior to use. [More info](#)

OTI Annotation: This clone was engineered to express the complete ORF with an expression tag. Expression varies depending on the nature of the gene.

Components: The ORF clone is ion-exchange column purified and shipped in a 2D barcoded Matrix tube containing 10ug of transfection-ready, dried plasmid DNA (reconstitute with 100 ul of water).

Reconstitution Method:

1. Centrifuge at 5,000xg for 5min.
2. Carefully open the tube and add 100ul of sterile water to dissolve the DNA.
3. Close the tube and incubate for 10 minutes at room temperature.
4. Briefly vortex the tube and then do a quick spin (less than 5000xg) to concentrate the liquid at the bottom.
5. Store the suspended plasmid at -20°C. The DNA is stable for at least one year from date of shipping when stored at -20°C.

RefSeq: [NM_001098502.2](#)

RefSeq Size: 1476 bp

RefSeq ORF: 429 bp

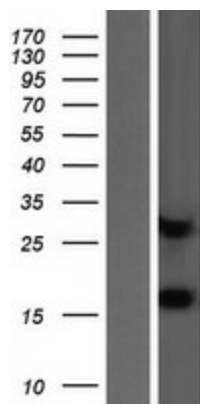
Locus ID: 131474

UniProt ID: [Q8N4Q1](#)

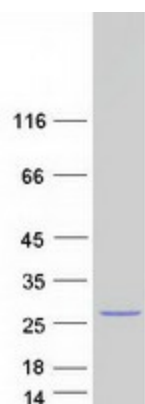
Cytogenetics: 3p25.1

MW: 15.8 kDa

Gene Summary: CHCHD4, a component of human mitochondria, belongs to a protein family whose members share 6 highly conserved cysteine residues constituting a -CXC-CX(9)C-CX(9)C- motif in the C terminus (Hofmann et al., 2005 [PubMed 16185709]).[supplied by OMIM, Mar 2008]

Product images:

Western blot validation of overexpression lysate (Cat# [LY420602]) using anti-DDK antibody (Cat# [TA50011-100]). Left: Cell lysates from untransfected HEK293T cells; Right: Cell lysates from HEK293T cells transfected with RC217831 using transfection reagent MegaTran 2.0 (Cat# [TT210002]).



Coomassie blue staining of purified CHCHD4 protein (Cat# [TP317831]). The protein was produced from HEK293T cells transfected with CHCHD4 cDNA clone (Cat# RC217831) using MegaTran 2.0 (Cat# [TT210002]).