

Product datasheet for **RC217822**

CDC20B (NM_152623) Human Tagged ORF Clone

Product data:

Product Type:	Expression Plasmids
Product Name:	CDC20B (NM_152623) Human Tagged ORF Clone
Tag:	Myc-DDK
Symbol:	CDC20B
Synonyms:	G6VTS76519
Mammalian Cell Selection:	Neomycin
Vector:	pCMV6-Entry (PS100001)
E. coli Selection:	Kanamycin (25 ug/mL)



[View online »](#)

ORF Nucleotide Sequence:

>RC217822 representing NM_152623
 Red=Cloning site Blue=ORF Green=Tags(s)

TTTTGTAATACGACTCACTATAGGGCGGCCGGAATTCGTCGACTGGATCCGGTACCGAGGAGATCTGCC
 GCC**CGGATCGCC**

ATGGAGTGGAAACTGGAGCGCACCCGCGCTCGGAGGGTCCGCACGGAAGAGGAGATGCTGTGGGAAAGTA
 TCATGCGTGTGCTCTCCAAGACTTGAAGCAGAAGAGAAGTCAAGATTCGCCAACGTACTCGATTCACT
 TAATGCTACGTATTCTGACTTTAAGAGCAACTTTGCGAAGAGGCTGTCCGCAGAGTTCTCTGTCGAGT
 AGCCCCATTACCACAAGGTGGCAGCAAAGTCAAAGTCTGCTCTGATTCTTTGGGAAAGAGC
 AGTCAACCACCTACCTCCAGAAGCTTCCGGATCAGTGTGAAGACACCGCTGAGAAAGAGACCTTGAC
 TCTAGGATCCCGCAAAGAACAAGTGAAGACCCAGCAAAGGAATTTCTGAAACAAGTAACTCTGCTCTC
 CATTCTTTGCAAGGCACCTCATGCAATGGACAGAGACTGGAAAGAAAGTGTGCTCAAAGGGCAGAAAT
 GCCTAAAACAACCTTTTGAACCCAGAAGCTGGTTCAGCAGGCTAATGGAAAAATGCAGCTCTGTGAGCA
 ATCCGAATGTGTTGGAAAGGCTCAAAGATGGAGTCAGAGATGAATCCTTCCATCTTAAAAGTTCTGGT
 GATATAAACGATTCCATACTCCAACCCAGAGGTGAAGATTCATATTACTGGTCTTCGAAATGACTACTATC
 TGAATATCCTAGATTGGAGTTTTCAGAATCTTGTGCCATAGCCCTGGGCTCTGCTGTATACATCTGGAA
 TGGGGAGAACCACAATGGGATTGAAAACATAGACTTAAGTCTCACTTGTAACTATATCTTCTGTGTCC
 TGGATAAAAGAGGGAACTTGCTGGCAGTTGGCACCAGCGAGGGAGAAGTGAATATGGGATGTGGTAA
 CTA AAAAGCGGCTGAGAAATATGCTTGGTCATTTGTGTCAGTAGTTGGGGCTCTGAGCTGGAATCACTTTAT
 CCTCAGCAGTGGGTCAAGACTGGGGCTGTTTATCATCACGATGTTCCGGTAGCCAGCATCATGTTGGA
 ACACCTCGCCACAAGCAAGCTGTGTGCTCTGAAGTGGTCACCGGATGGCAGGCTGCTTCCAGCGGCT
 GCAGTGTGACTGTGACAATATGGCCCCACGATCCAGGTGCCAGTGCACAGGGCCAACCGCTGAAAGT
 CATAACCCAGTCTACGGCAGTCAAGGCCATGGATTGGTGTCCCTGGCAGTCTGGGGTCTTGGCATTGGA
 GGAGGAATGAAGGATGGACGCTTACACATCTTGGATATAAATGCTGGGAAGAGCATCCAGACCCCAAGCA
 CAAACTCACAGATTTGTTCTTAATCTGGCTACCTAAGACAAAGGAGATTGCAACTGGTCAAGGACTCC
 CAAGAATGATGTGACTGTGTGGACCTGTCCACTGTGTCCAGGTGAGCCACAGGGGCAGAGTGTGCAC
 CTGTCTTTGAGTCCAGACCAGACCCGGGTGTTTCTGCTGCAGCTGATGGGACGGCTCTGTATGGAATT
 GCTAC

ACGCGTACGCGGCCGCTCGAGCAGAAACTCATCTCAGAAGAGGATCTGGCAGCAAATGATATCTGGATT
 ACAAGGATGACGACGATAAGGTTTAA

Protein Sequence:

>RC217822 representing NM_152623
 Red=Cloning site Green=Tags(s)

MEWKLERTAPRRVRTEEEMLWESIMRVLSKDLKQKRSQDSANVLDSVNATYSDFKSNFAKRLSAEVPVAS
 SPITTRWQQSQTRALSSDSFGEEQSTTYLPEASGSVLKTPPEKETLTLGSRKEQLKTPSKGISETSNSAL
 HFCKAPHAMDRDWKESVASKGQKCLKQLFVTQNVVQQANGKMLCEQSECVWKGCKDGVRFESFLKSSG
 DINDSILQPEVKIHITGLRNDYYLNILDWSFQNLVAIALGSVYIWNENHNGIENIDLSTCNYISSVS
 WIKEGTCLAVGTSEGEVQLWDVVTKRLRNMLGHL SVVGALSWNHFILSSGSRLGRVYHHDVVRVAQHHVG
 TLRHKQAVCALKWSPDGRLLSSGSDGLLTIWPHDPGASAQGQPLKVITQSTAVKAMDWCPWQSGVLAIG
 GGMKDGRLHILDINAGKSIQTPSTNSQICSLIWLPKTKEIATGQGTPKNDVTVWTCPTVSRSGHRGRVLH
 LSLSPDQTRVFSAAADGTASVWNCY

TRTRPLEQKLISEEDLAANDILDYKDDDDKV

Chromatograms:

https://cdn.origene.com/chromatograms/mk8016_c06.zip

Restriction Sites:

Sgfl-Mlul

Cloning Scheme:



ACCN: NM_152623

ORF Size: 1545 bp

OTI Disclaimer: Due to the inherent nature of this plasmid, standard methods to replicate additional amounts of DNA in E. coli are highly likely to result in mutations and/or rearrangements. Therefore, OriGene does not guarantee the capability to replicate this plasmid DNA. Additional amounts of DNA can be purchased from OriGene with batch-specific, full-sequence verification at a reduced cost. Please contact our customer care team at custsupport@origene.com or by calling 301.340.3188 option 3 for pricing and delivery.

The molecular sequence of this clone aligns with the gene accession number as a point of reference only. However, individual transcript sequences of the same gene can differ through naturally occurring variations (e.g. polymorphisms), each with its own valid existence. This clone is substantially in agreement with the reference, but a complete review of all prevailing variants is recommended prior to use. [More info](#)

OTI Annotation: This clone was engineered to express the complete ORF with an expression tag. Expression varies depending on the nature of the gene.

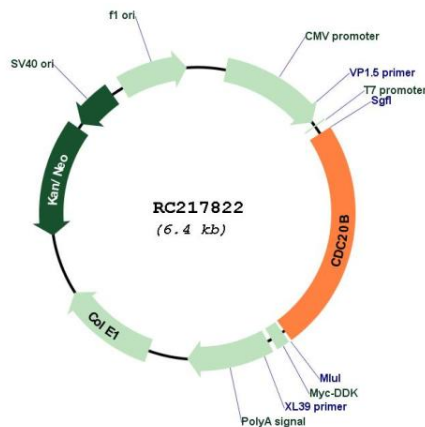
Components: The ORF clone is ion-exchange column purified and shipped in a 2D barcoded Matrix tube containing 10ug of transfection-ready, dried plasmid DNA (reconstitute with 100 ul of water).

- Reconstitution Method:
1. Centrifuge at 5,000xg for 5min.
 2. Carefully open the tube and add 100ul of sterile water to dissolve the DNA.
 3. Close the tube and incubate for 10 minutes at room temperature.
 4. Briefly vortex the tube and then do a quick spin (less than 5000xg) to concentrate the liquid at the bottom.
 5. Store the suspended plasmid at -20°C. The DNA is stable for at least one year from date of shipping when stored at -20°C.

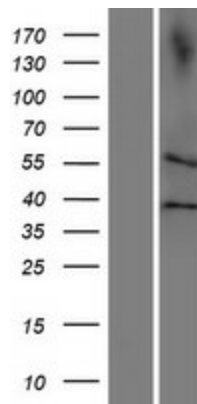
RefSeq: [NM_152623.2](#), [NP_689836.2](#)

RefSeq Size: 2946 bp
 RefSeq ORF: 1548 bp
 Locus ID: 166979
 UniProt ID: [Q86Y33](#)
 Cytogenetics: 5q11.2
 Protein Families: Druggable Genome
 MW: 56.7 kDa

Product images:



Circular map for RC217822



Western blot validation of overexpression lysate (Cat# [LY407427]) using anti-DDK antibody (Cat# [TA50011-100]). Left: Cell lysates from untransfected HEK293T cells; Right: Cell lysates from HEK293T cells transfected with RC217822 using transfection reagent MegaTran 2.0 (Cat# [TT210002]).