

Product datasheet for RC217807

Cyclin Y (CCNY) (NM_145012) Human Tagged ORF Clone

Product data:

Product Type:	Expression Plasmids
Product Name:	Cyclin Y (CCNY) (NM_145012) Human Tagged ORF Clone
Tag:	Myc-DDK
Symbol:	Cyclin Y
Synonyms:	C10orf9; CBCP1; CCNX; CFP1
Mammalian Cell Selection:	Neomycin
Vector:	pCMV6-Entry (PS100001)
E. coli Selection:	Kanamycin (25 ug/mL)
ORF Nucleotide Sequence:	>RC217807 representing NM_145012 Red=Cloning site Blue=ORF Green=Tags(s)

TTTTGTAATACGACTCACTATAGGGCGGCCGGAATTCGTCGACTGGATCCGGTACCGAGGAGATCTGCC
GCC**CGATCGCC**

ATGGGGAACACTACCTCGTGCTGCGTGTCCAGTCCCAAGCTCCGGAGGAATGCCCACTCCCGGCTGG
AGTCCTACCGCCAGACACGGACCTGAGCCGCGAGGACACGGGCTGCAACCTGCAGCACATCAGCGACCG
GGAGAACATAGACGATTTGAACATGGAATTCATCCTTCAGATCATCCTCGGGCCAGCACAATATTCCTC
AGTAAATCTCAGACAGACGTGAGAGAAAAACGCAAGAGTCTCTTCATTAACCATCATCCTCCAGGACAAA
TAGCAAGGAAATACAGTTCCTGCTCCACCATTTTCCTAGATGATAGCACAGTCAGTCAACCAAACCTCAA
GTATACAATTAATGTGTCGCTCTTGAATATATTATCACATCAAAAACAGGGACCCAGATGGAAGGATG
CTCTTAGATATTTTTGATGAAAATCTTCCACCTCTTTCGAAATCCGAAAGTGCCACCAGATTATGACAAA
ACAACCCAGAGCAGAAGCAGATTTACCGGTTGCTTCGGACACTGTTTCAGTGTGCTCAGCTGACGGCTGA
ATGTGCCATCGTCACCCTGGTGTACCTTAAAGACTTTTAAACATACGCAGAGATAGATATCTGTCCGGCC
AACTGGAAGCGGATTGTTTTAGGGGCGATCCTGCTGGCCTCCAAGGTGTGGGATGACCAGGCTGTATGGA
ATGTGGATTACTGCCAGATCCTGAAAGACATCACGGTGGAGGACATGAACGAGCTAGAGCGACAGTTTCT
TGAATTGCTGCAGTTCAACATCAATGTTCCCTTCCAGTGTCTATGCCAAGTATTATTTTGTCTTCGTTCT
CTGGCAGAAGCGAACAACCTGAGCTTTCCCTTGGAGCCCCTGAGCAGGGAGAGGCTCACAAAGCTTGAGG
CCATCTCTCGCCTCTGCGAGGACAAGTACAAGGACCTAAGAAGATCCGCGAGGAAGCGCTCAGCCAGTGC
AGACAACCTGACTCTGCCCGGTGGTCCCCAGCCATCATCTCT

AG**CGGACCG**ACGCGTACGCGGCCGCTCGAGCAGAAACTCATCTCAGAAGAGGATCTGGCAGCAAATGATATCC
TGGATTACAAGGATGACGACGATAAGGTTTAA



[View online »](#)

Protein Sequence: >RC217807 representing NM_145012
 Red=Cloning site Green=Tags(s)

```
MGNTTSCCVSSPKLRRNAHSRLESYRPDTDL SREDTGCNLQHISDRENIDDLNMEFNPSDHPRASTIFL
SKSQTDVREKRKSLFINHHPPGQIARKYSSCSTIFLDDSTVSQPNLKTYIKCVLAIIYYHIKNRDPDGRM
LLDIFDENLHPLSKSEVPPDYDKHNPEQKQIYRFVRTLFSAACLTAECAIVTLVYLERLLTYAEIDICPA
NWKRIVLGAILLASKVWDDQAVWNVDYQCILKIDITVEDMNELERQFLELLQFNINVPSSVYAKYYFDLRS
LAEANNLSFPLEPLSRERAHKLEAISRLCEDKYKDLRRSARKRSASADNLTLPWSPAIIIS
```

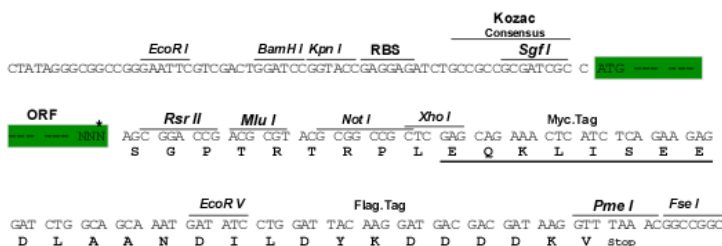
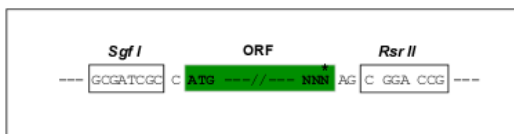
SGP TRRRLEQKLISEEDLAANDILDYKDDDDKV

Chromatograms: https://cdn.origene.com/chromatograms/mg3691_g02.zip

Restriction Sites: SgfI-RsrII

Cloning Scheme:

Cloning sites used for ORF Shuttling:



* The last codon before the Stop codon of the ORF

ACCN: NM_145012

ORF Size: 1023 bp

OTI Disclaimer: The molecular sequence of this clone aligns with the gene accession number as a point of reference only. However, individual transcript sequences of the same gene can differ through naturally occurring variations (e.g. polymorphisms), each with its own valid existence. This clone is substantially in agreement with the reference, but a complete review of all prevailing variants is recommended prior to use. [More info](#)

OTI Annotation: This clone was engineered to express the complete ORF with an expression tag. Expression varies depending on the nature of the gene.

Components: The ORF clone is ion-exchange column purified and shipped in a 2D barcoded Matrix tube containing 10ug of transfection-ready, dried plasmid DNA (reconstitute with 100 ul of water).

Reconstitution Method:

1. Centrifuge at 5,000xg for 5min.
2. Carefully open the tube and add 100ul of sterile water to dissolve the DNA.
3. Close the tube and incubate for 10 minutes at room temperature.
4. Briefly vortex the tube and then do a quick spin (less than 5000xg) to concentrate the liquid at the bottom.
5. Store the suspended plasmid at -20°C. The DNA is stable for at least one year from date of shipping when stored at -20°C.

RefSeq: [NM_145012.3](#), [NP_659449.3](#)

RefSeq Size: 2135 bp

RefSeq ORF: 1026 bp

Locus ID: 219771

UniProt ID: [Q8ND76](#)

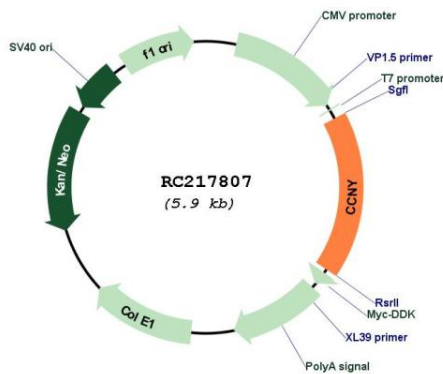
Cytogenetics: 10p11.21

Domains: CYCLIN, cyclin

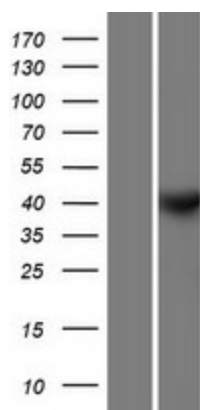
MW: 39.2 kDa

Gene Summary: Cyclins, such as CCNY, control cell division cycles and regulate cyclin-dependent kinases (e.g., CDC2; MIM 116940) (Li et al., 2009 [PubMed 18060517]).[supplied by OMIM, May 2009]

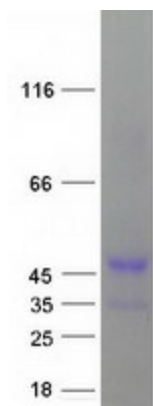
Product images:



Circular map for RC217807



Western blot validation of overexpression lysate (Cat# [LY408148]) using anti-DDK antibody (Cat# [TA50011-100]). Left: Cell lysates from untransfected HEK293T cells; Right: Cell lysates from HEK293T cells transfected with RC217807 using transfection reagent MegaTran 2.0 (Cat# [TT210002]).



Coomassie blue staining of purified CCNY protein (Cat# [TP317807]). The protein was produced from HEK293T cells transfected with CCNY cDNA clone (Cat# RC217807) using MegaTran 2.0 (Cat# [TT210002]).