

Product datasheet for **RC217806**

ECM2 (NM_001393) Human Tagged ORF Clone

Product data:

Product Type:	Expression Plasmids
Product Name:	ECM2 (NM_001393) Human Tagged ORF Clone
Tag:	Myc-DDK
Symbol:	ECM2
Mammalian Cell Selection:	Neomycin
Vector:	pCMV6-Entry (PS100001)
E. coli Selection:	Kanamycin (25 ug/mL)



[View online »](#)

ORF Nucleotide
Sequence:

>RC217806 representing NM_001393
Red=Cloning site Blue=ORF Green=Tags(s)

TTTTGTAATACGACTCACTATAGGGCGGCCGGAATTCGTCGACTGGATCCGGTACCGAGGAGATCTGCC
GCCGCGATCGCC

ATGAAGATTGCAGTTTTGTTTTGTTTTTCTGCTTATCATTTTTCAAACACTGACTTTGAAAAAATGAAG
AAATTCCTAGGAAGCAAAGGAGGAAGATCTACCACAGAAGGTTGAGGAAAAGTTCAACCTCACACAAGCA
CAGATCAAACAGACAGCTTGGAATTCAGCAAACACAGTTTTTACACCAGTAGCAAGACTTCCTATTGTT
AACTTTGATTATAGCATGGAGGAAAAGTTGAATCCTTTTCAAGTTTTCTGGAGTAGAATCAAGTTATA
ATGTGTTACCAGGAAAGAAGGGACACTGTTTGGTAAAGGGCATAACCATGTACAACAAAGCTGTGTGGTC
GCCTGAGCCCTGCACTACCTGCCTCTGCTCAGATGGAAGAGTTCTTTGTGATGAAACCATGTGCCATCCC
CAGAGGTGCCCCAAACAGTTATACCTGAAGGGGAATGCTGCCCGGTCTGCTCCGCTACTGTCTCCTATT
CTCTACTCAGTGGTATAGCATTAAATGATAGAAATGAATTTTCTGGTGATTCTTCAGAACAAGAGAACC
TACCAATTTACTTCATAAGCAACTGCCACCTCCTCAGGTGGGAATGGACCGAATAGTAAGAAAAGAAGCA
CTTCAATCTGAGGAGGATGAAGAAGTGAAGAAGAAGATACAGAGCAAAAGAGAGAGACCCCTGAATCTA
GAAATCAGGGGCAACTTTACAGTGAGGGGGACAGCAGAGGAGGAGACAGAAGCAGAGGCCCTGGAGAGGA
GAGGAGGCTGGCACACCAGCAACAACGCCAAGGAAGGGAGGAGGAGGAGGATGAGGAGGAGGAGGTTGAG
GAGGGTGAGGAGGATGAGGAGGACGAGGAGGACCCGGTAAAGAGGAGATATGTTCCGAATGCCCTCTCGAT
CCCCGTTCTCTGCTCCTCCAGAGGCACACTGCGCCTGCCAAGCGGGTCTCTGTCTACAGGACCAT
CAGCTGCATCAACGCCATGCTTACCAGATACCACCGTGACAGCACCACAGATAACAAGTCTGGAGCTC
ACTGGCAATTCATCGCCTCCATCCAGATGAAGCATTTAATGGATTACCAAATTTGAAAGGCTTGATC
TGAGTAAAAATAATATCACTTCTCAGGCATAGGTCCAAAAGCATTCAAGCTTCTGAAGAAGTTAATGCG
TTTGAATATGGATGGAAATAATTTGATACAGATTCCTTCAACAATTGCCATCTACATTAGAAGAATTTAAA
GTCAATGAGAACAATCTTCAGGCTATCGATGAAGAAAGTTTATCAGACTTAAATCAGTTGGTCACCTTAG
AATTGGAAGGAAACAATCTCAGTGAAGCCAATGTCAATCCTTTAGCTTTCAAACCTTTGAAGAGCCTAGC
CTACTTGCGTCTGGGAAAAATAAATTTAGAATTATACCGCAGGGTCTTCTGTTCTATTGAGGAATTA
TACCTAGAAAATAACCAAATTTGAAGAAATAACTGAAATTTGTTTCAATCATACCAGAAAGATCAATGTCA
TTGTAAGTACTGTTATAACAAAATTTGAAGAAATAGGATTGCTCCTTAGCCTGGATAAATCAAGAAAATCT
AGAATCCATTGATCTCTCTACAACAAGCTCTATCACGTCCCGTCTATCTACCCAAGTCTTGTGTCAC
CTAGTACTCCTTGGGAACAGATTGAACGGATCCCTGGCTATGTGTTGGCCACATGGAACCAAGGCTGG
AATACTTGTACCTGTCATTTAACAACTTGTCTGATGATGGCATGGACCGTCTCCTTCTATGGGGCATA
TCATTCTCTGAGAGAATTTCTGGATACAATGACTTAAAATCTATACCACCTGGGATACAAGAAATG
AAAGCACTACATTTTCTGAGGCTGAACAACAAGATACGGAACATTCTCCAGAAGAAATTTGCAATG
CTGAAGAGGATGATGACTCAAATCTGGAACATCTTCATCTTGAACAATATATTTAAAATTAGAGAAAT
ACCATCTTACACATTTTCATGCATAAGATCATACTCAAGTATCGTTCTTAAACCACAAAACATCAAG

ACGCGTACGCGGCCGCTCGAGCAGAACTCATCTCAGAAGAGGATCTGGCAGCAATGATATCCTGGATT
ACAAGGATGACGACGATAAAGTTTAA

Protein Sequence: >RC217806 representing NM_001393
Red=Cloning site Green=Tags(s)

MKIAVLCFFLLIIFQDFGKNEEIPRKQRKIYHRRLKSSSTSHKHRSNRQLGIQOTTVFTPVARLPV
 NFDYSMEEFKFSFSSFPGEVSSYNVLPGKKGHCLVKGITMYNKAVWSPEPCTTCLCSDGRVLCDETMCHP
 QRCPQTVIPEGECCPVCSATVSYSLLSGIALNDRNEFSGDSSEQREPTNLLHKQLPPPQVGMDRVKEA
 LQSEEEDEEVEKEDTEQKRETPESRNQGQLYSEGDSRGGDRKQRPGEERRLAHQQRQGEEEEDEEEEGE
 EGEEDEEEDPVRGDMFRMPSRSLPAPPRTLRPSGCSLSYRTISCSINAMLTQIPPLTAPQITSLEL
 TGNSIASIPDEAFNGLPNLERLDL SKNNITSSGIGPKAFKLLKLMRLNMDGNLIQIPSLPSTLEELK
 VNENNLQAIDEESSLNQLVTLEEGNNLSEANVNPLAFKPLKSLAYLRLGKNKFRIIPQGLPGSIEEL
 YLENNQIEEITEICFNHTRKINVIVLRYNKIEENRIAPLAWINQENLESIDL SYNKLYHVP SYLPKSLHL
 LVLLGNQIERIPGYVFGHMEPGLEYLYL SFNKLADDGMDRV SFYGAYHSLRELFLDHNDLKSIPPGIQEM
 KALHFLRLNKKIRNILEEICNAEEDDDSNLEHLHLENNYIKIREIPSYTFSCIRSYSSIVLKPQNIK

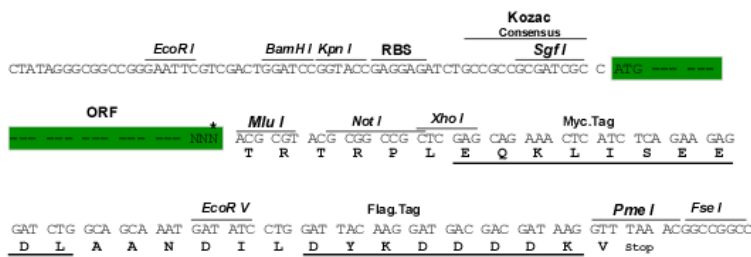
TRTRPLEQKLISEEDLAANDILDYKDDDDKV

Chromatograms: https://cdn.origene.com/chromatograms/mg4070_f07.zip

Restriction Sites: SgfI-MluI

Cloning Scheme:

Cloning sites used for ORF Shuttling:



* The last codon before the Stop codon of the ORF

ACCN: NM_001393

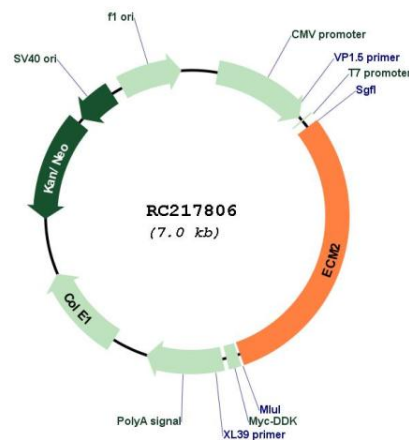
ORF Size: 2097 bp

OTI Disclaimer: The molecular sequence of this clone aligns with the gene accession number as a point of reference only. However, individual transcript sequences of the same gene can differ through naturally occurring variations (e.g. polymorphisms), each with its own valid existence. This clone is substantially in agreement with the reference, but a complete review of all prevailing variants is recommended prior to use. [More info](#)

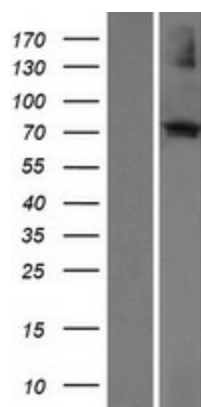
OTI Annotation: This clone was engineered to express the complete ORF with an expression tag. Expression varies depending on the nature of the gene.

Components:	The ORF clone is ion-exchange column purified and shipped in a 2D barcoded Matrix tube containing 10ug of transfection-ready, dried plasmid DNA (reconstitute with 100 ul of water).
Reconstitution Method:	<ol style="list-style-type: none">1. Centrifuge at 5,000xg for 5min.2. Carefully open the tube and add 100ul of sterile water to dissolve the DNA.3. Close the tube and incubate for 10 minutes at room temperature.4. Briefly vortex the tube and then do a quick spin (less than 5000xg) to concentrate the liquid at the bottom.5. Store the suspended plasmid at -20°C. The DNA is stable for at least one year from date of shipping when stored at -20°C.
RefSeq:	<u>NM_001393.3, NP_001384.1</u>
RefSeq Size:	3163 bp
RefSeq ORF:	2100 bp
Locus ID:	1842
UniProt ID:	<u>O94769</u>
Cytogenetics:	9q22.31
Protein Families:	Secreted Protein
MW:	79.79 kDa
Gene Summary:	ECM2 encodes extracellular matrix protein 2, so named because it shares extensive similarity with known extracellular matrix proteins. Three transcript variants encoding different isoforms have been found for this gene. [provided by RefSeq, Oct 2010]

Product images:



Circular map for RC217806



Western blot validation of overexpression lysate (Cat# [LY419966]) using anti-DDK antibody (Cat# [TA50011-100]). Left: Cell lysates from untransfected HEK293T cells; Right: Cell lysates from HEK293T cells transfected with RC217806 using transfection reagent MegaTran 2.0 (Cat# [TT210002]).