

Product datasheet for **RC217805**

PCDHGA4 (NM_018917) Human Tagged ORF Clone

Product data:

Product Type:	Expression Plasmids
Product Name:	PCDHGA4 (NM_018917) Human Tagged ORF Clone
Tag:	Myc-DDK
Symbol:	PCDHGA4
Synonyms:	PCDH-GAMMA-A4
Mammalian Cell Selection:	Neomycin
Vector:	pCMV6-Entry (PS100001)
E. coli Selection:	Kanamycin (25 ug/mL)



[View online »](#)

ORF Nucleotide
Sequence:

>RC217805 representing NM_018917
 Red=Cloning site Blue=ORF Green=Tags(s)

TTTTGTAATACGACTCACTATAGGGCGGCCGGGAATTCGTCGACTGGATCCGGTACCGAGGAGATCTGCC
 GCC**CGCATCGCC**

ATGGCGGCGCCTCCTGCTCGCCAGACCACCCGGCTGCTCCAGATCTGCCTTCTCCTGGGGTTCTGG
 TGGAAATCAGGGCCGAACAGATTCTACTCGGTGTTTGAGGAGCAGGAAGAAGGCTCAGTGGTGGGCAA
 CATCGCCAAGGACCTGGGGTTGGCGCCCGGGAGCTGGCGGAGCGCGGAGTCCGCATCGTCTCCAGAGGT
 AGGACGCAGCTTTTCGCCCTGAACCCGCGCAGCGGCACCTTGGTCACCGCGGGTAGGATAGACAGGGAGG
 AGCTCTGCGACAGATCTCCAAACTGTGTGACAAACCTGGAGATTCTTCTAGAAGATACAGTGAAGATTTT
 GCGGGTAGAGGTGAAATAATCGATGTTAATGATAACCCACCCAGTTTTGGGACAGAACAGAGGGAAATA
 AAAGTTGCTGAAAATGAAAATCCTGGGGCAAGATTTCTCTTCTGAAGCTTTTGATCCGGATGTAGGTG
 TAAACTCCCTGCAGGGTTACCAGCTCAACTCAAACGGTACTTTTCCCTGGACGTGCAAAGTGGGCGCA
 TGGGATTAAGTACCCAGAGCTGGTGTGGAACGCGCTCTAGATCGCGAGGAAGAGCGGTTCCACCACCTC
 GTTCTCACGGCCTTCGATGGAGGTGACCCGGTTCGCTCTGGCACTGCCAGGATTCTCATAACTTGTGG
 ATACCAACGATAATGCTCCCGTGTTCACCTCAGCCCGAGTACCACGTAAGTGTTCGTGAGAACGTTCTGT
 AGGCACTCGGCTACTCACCGTAAAAGCCACTGATCCAGATGAAGGAGCCAATGGAGACGTGACGATTCT
 TTCCGAAAGTAAAGACAAAATATCACAGCTATTTCAAGTTGAATTTCTCTGAGTGGGGATATAACAATAT
 TGGGGGGTCTAGATTATGAGGACTCTGGATTCTATGACATAGATGTAGAAGCCATGATGGGCTGGTCT
 CCGAGCTAGAAGCAAGGTAAGTGGTACAGTTCTGGATGAAAATGACAACGCCAGAAAGTACAGTTACA
 TCTCTCACAGCTCAGTCCAGGAATCTTCTTCCCGGGTACAGTAATTGCACTTTTCAACGTGCAATGACA
 GTGACTCAGGAGGAAATGGCCTAGTCAATGTTCTATTCCAGATAATCTGCCATTACACTTGAAGAGAC
 CTATGGAATTTATTCGGTTGTTGACACACAGAACACTGGACAGGGAAGAAGTCTCAGAATATAACATC
 ACTGTAAGTCCACTGACCAGGGAACCTCCACTGTCTACAGAACTCATATTTCACTGCAAGTATGG
 ACATCAATGACAACCCACCCACTTTCCCTCATGCTTCTACTCTGCTTACATTCTGAAAACAACCCAG
 AGGAGCCTCCATCTTATCTATGACTGCTCAAGACCCTGACAGTGGTGAATGCCGAATCACTTACTCC
 CTGGCCGAAGACACCTTCCAGGGTGCACCTCTGCTCCTATGTCTCCATCAACTCCAATACAGGGATCC
 TATATGCTCTTTGCTCCTCGACTATGAGCAGTTAGAGACCTGCAGCTGCTGATGACAGCCAGTACAG
 TGGAGACCCTCCACTCAGCAGCAATGTGCACTGAGCCTCTTTGTGCTGGACCAGAACGACAATGTCCT
 GAGATCCTGTACCCACCTTCCCTACTGATGGCTCCACTGGTGTGGAGCTGGCACCCGCTCCGAGATT
 CCGGCTACCTGGTGACCAAGTGGTGGCAGTGGACAGAGACTCAGGTGAGAAATGCCTGGCTGCTACAG
 CCTACTCAAGTCCAGCGAGCCGGGACTATTTGCAGTGGGGCTGCACACAGGCGAGGTGCGCACCCGACGG
 GCCCTGTGGACAGAGACGCGCTCAAGCAGAGGCTTGTAGTGGTCCAGGACCATGGCCAGCCCCCTC
 TCTCGCCACCGTCACACTCACTGTGGCTGTGGCCGACAGCATCCAGATGTCCTGGCTGACTTGGCGAG
 CCTCAAGCCTTACAGCAGACCCAGACGACTCGGGCTCACACTCTATCTCGTGGTGGCAGTGGCCGCTGC
 TCCTGCGTCTTCTGGCTTTTGTACGGTGTGCTAGCACTCAAGCTGAGACGCTGGCACAAGTACAGCC
 TGCTTACAGCTGAAGGCAGCAGTTGGCAGTGTGCTGCTCGCACTTTGTGGCGTGGACGGGGTTCCG
 GGCTTTCTGCAGACCTATCCACGAGGTCTCCCTCACCGGGACTCGCGGAAGAGTCACTGATCTTC
 TCCAACCCAGCTATGCAGACACGCTCATCAGCCGGGAGAGTTGTGAGAAAAGCGAGCCTTCTGATAA
 CTCAGGATTTACTTGAACAAGGAGACCCCTAATCTTACAGAACCCCGCCCAACAGGACTGGCGTTT
 CTCTCAGGCCAGAGACCCGGCACAGCGGCTCCAAAATGGCGATGACACCGGCACCTGGCCCAACAAC
 CAGTTTACACAGAGATGCTGCAAGCCATGATCTTGGCGTCCGCCAGTGAAGCTGCTGATGGGAGCTCCA
 CCCTGGGAGGGGGTGGCCGACCATGGGATTGAGCGCCGCTACGGACCCAGTTCACTTGCAGCAGT
 GCCCGACTACCGCCAGAATGTCTACATCCAGGCAGCAATGCCCACTGACCAACGCAGCTGGCAAGCGG
 GATGGCAAGGCCAGCAGGTGGCAATGGCAACAAGAAGAAGTCCGGCAAGAAGGAGAAGAAG

ACGCGTACGCGGCCGCTCGAGCAGAAACTCATCTCAGAAGAGGATCTGGCAGCAAATGATATCCTGGATT
 ACAAGGATGACGACGAT AAGGTTTAA

Protein Sequence: >RC217805 representing NM_018917
 Red=Cloning site Green=Tags(s)

MAAPPARPDHTRLLQICLLLGLVVEIRAEQILYSVFEEQEESVVGNIKDLGLAPRELAERGVRIVSRG
 RTQLFALNPRSGTLVAGRIDREELCDRSPNCVTNLEILLEDVTKILRVEVEIIDVNDNPPSFGTEQREI
 KVAENENPGARFPLPEAFDPDVGVNSLQGYQLNSNGYFSLDVQSGADGIKYPELVLERALDREEEAVHHL
 VLTAFDGGDPVRSGTARILIIIVDTNDNAPVFTQPEYHVSVRENVPVGTROLLTKATDPDEGANGDVTYS
 FRKVRDKISQLFQLNSLSGDITILGGLDYEDSGFYDIDVEAHDGPGLRARSKVLVTVLDENDNAPEVTVT
 SLTSSVQEESSPGTVIALFNVHSDSGGNGLVTC SIPDNLPFTLEKTYGNYRLLTHRTRLDREEVSEYNI
 TVTATDQGTPLSTETHISLQVMDINDNPTFPHASYSAYIPENNPRGASILSMTAQDPDSDGNARITYS
 LAEDTFQGAPLSSYVSINSNTGILYALCSFDYEQFRDLQLLMTASDSGDPPLSSNVSLSLFVLDQNDNVP
 EILYPTFPTDGGTVELAPRSADSGYLVTKVAVDRDSGQNAWLSYLLKSSEPGLFAVGLHTGEVRTAR
 ALLDRDALKQRLVVVVQDHGQPPLSATVTLTVAVADSIQVLAADLGLSKPSADPDDSGTLTLYLVVAVAAV
 SCVFLAFVTLLALKLRWHKSRLLHAEGSRLAGVPASHFVGVDGVRAF LQTY SHEVSLTADSRKSHLIF
 SQPSYADTLISRESCEKSEPLLITQDLLETGKDPNLQQAPPNTDWRFSQAQRPGTSGSQNGDDTGTWPNN
 QFDTEMLQAMILASASEAADGSSTLGGGAGTMGLSARYGPQFTLQHVPDYRQNVYIPGSNATLTNAAGKR
 DGKAPAGNGNKKKSGKKEKK

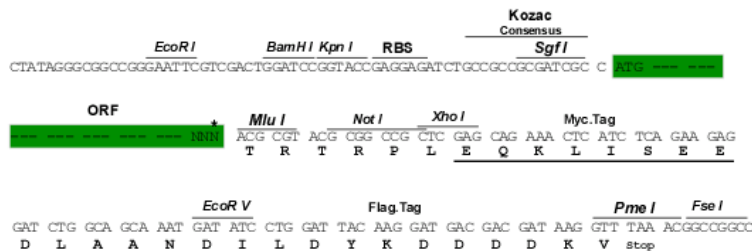
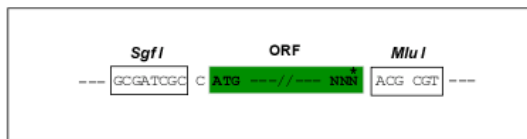
TRTRPLEQKLISEEDLAANDILDYKDDDDKV

Chromatograms: https://cdn.origene.com/chromatograms/mk8016_c08.zip

Restriction Sites: SgfI-MluI

Cloning Scheme:

Cloning sites used for ORF Shuttling:



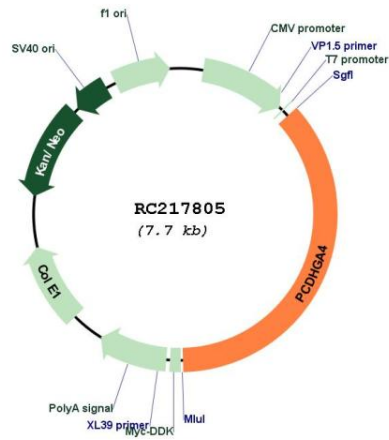
* The last codon before the Stop codon of the ORF

ACCN: NM_018917

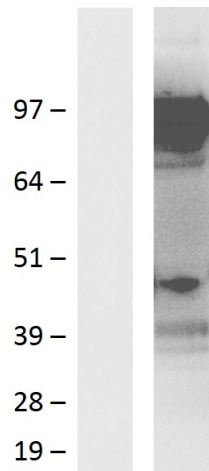
ORF Size: 2793 bp

OTI Disclaimer:	The molecular sequence of this clone aligns with the gene accession number as a point of reference only. However, individual transcript sequences of the same gene can differ through naturally occurring variations (e.g. polymorphisms), each with its own valid existence. This clone is substantially in agreement with the reference, but a complete review of all prevailing variants is recommended prior to use. More info
OTI Annotation:	This clone was engineered to express the complete ORF with an expression tag. Expression varies depending on the nature of the gene.
Components:	The ORF clone is ion-exchange column purified and shipped in a 2D barcoded Matrix tube containing 10ug of transfection-ready, dried plasmid DNA (reconstitute with 100 ul of water).
Reconstitution Method:	<ol style="list-style-type: none">1. Centrifuge at 5,000xg for 5min.2. Carefully open the tube and add 100ul of sterile water to dissolve the DNA.3. Close the tube and incubate for 10 minutes at room temperature.4. Briefly vortex the tube and then do a quick spin (less than 5000xg) to concentrate the liquid at the bottom.5. Store the suspended plasmid at -20°C. The DNA is stable for at least one year from date of shipping when stored at -20°C.
Note:	Plasmids are not sterile. For experiments where strict sterility is required, filtration with 0.22um filter is required.
RefSeq:	NM_018917.2 , NP_061740.1
RefSeq Size:	4602 bp
RefSeq ORF:	2889 bp
Locus ID:	56111
UniProt ID:	Q9Y5G9
Cytogenetics:	5q31.3
Domains:	CA
MW:	97.5 kDa
Gene Summary:	This gene is a member of the protocadherin gamma gene cluster, one of three related clusters tandemly linked on chromosome five. These gene clusters have an immunoglobulin-like organization, suggesting that a novel mechanism may be involved in their regulation and expression. The gamma gene cluster includes 22 genes divided into 3 subfamilies. Subfamily A contains 12 genes, subfamily B contains 7 genes and 2 pseudogenes, and the more distantly related subfamily C contains 3 genes. The tandem array of 22 large, variable region exons are followed by a constant region, containing 3 exons shared by all genes in the cluster. Each variable region exon encodes the extracellular region, which includes 6 cadherin ectodomains and a transmembrane region. The constant region exons encode the common cytoplasmic region. These neural cadherin-like cell adhesion proteins most likely play a critical role in the establishment and function of specific cell-cell connections in the brain. Alternative splicing has been described for the gamma cluster genes. [provided by RefSeq, Jul 2008]

Product images:



Circular map for RC217805



Western blot validation of overexpression lysate (Cat# [LY412929]) using anti-DDK antibody (Cat# [TA50011-100]). Left: Cell lysates from untransfected HEK293T cells; Right: Cell lysates from HEK293T cells transfected with RC217805 using transfection reagent MegaTran 2.0 (Cat# [TT210002]).