

Product datasheet for **RC217803**

CHD2 (NM_001042572) Human Tagged ORF Clone

Product data:

Product Type:	Expression Plasmids
Product Name:	CHD2 (NM_001042572) Human Tagged ORF Clone
Tag:	Myc-DDK
Symbol:	CHD2
Synonyms:	DEE94; EEOC
Mammalian Cell Selection:	Neomycin
Vector:	pCMV6-Entry (PS100001)
E. coli Selection:	Kanamycin (25 ug/mL)



[View online »](#)

ORF Nucleotide Sequence:

>RC217803 representing NM_001042572
 Red=Cloning site Blue=ORF Green=Tags(s)

TTTTGTAATACGACTCACTATAGGGCGGCCGGAATTCGTCGACTGGATCCGGTACCGAGGAGATCTGCC
 GCC**GCGATCGCC**

ATGATGAGAAATAAGGACAAAAGCCAAGAGGAGGACAGTTCGCTACACAGCAATGCATCGAGTCACTCAG
 CCTCTGAAGAAGCTTCGGTTCAGACTCAGGCAGTCAGTCGAAAAGTGAGCAGGGAAGTGATCCAGGAAG
 TGGACATGGCAGCGAGTCGAACAGCAGCTCTGAATCTTCTGAGAGTCAGTCGGAATCTGAGAGCGAATCA
 GCAGGTTCCAAATCCCAGCCAGTCTCCAGAAGCCAAAGAGAAGCCAGCCTCTAAGAAGGAACGGATAG
 CTGATGTGAAGAAGATGTGGGAAGAATATCCTGATGTTTATGGGGTCAGGCGGTCAAACCGAAGCAGACA
 AGAACCATCGCGATTTAATATTAAGGAAGAGGCAAGTAGCGGGTCTGAGAGTGGGAGCCAAAAAGAAGA
 GGCCAGAGGCAGCTGAAAAACAAGAAAAATGAAACAGGAACCCCTCAGAAGATGAACAGGAACAAGGCA
 CCAGTGCAGAGAGTGAGCCAGAACAAAAAAGTAAAAGCCAGAAGACCTGTCCCAGAAGAACAGTGCC
 CAAACCTCGTGTTAAAAAGCAGCCGAAGACTCAGCGTGGAAAGAGAAAAAGCAAGATTCTCTGATGAG
 GATGATGATGATGACGAAGCTCCAAAAGGCAGACTCGTCGAAGAGCGGTAAAAACGTTAGTTACAAGG
 AAGATGATGACTTTGAGACTGACTCAGATGATCTCATTGAAATGACTGGAGAAGGAGTTGATGAACAGCA
 AGATAATAGTGAAACTATTGAAAAGTCTTAGATTCAAGACTGGGAAAGAAAGGACCCACTGGAGCATCT
 ACTACTGTATATGCGATTGAAGCTAATGGCGACCTAGTGGTGACTTTGACACTGAAAAGGATGAAGGTG
 AAATCCAGTACCTCATCAAGTGAAGGGTGGTCTTACATCCACAGCACATGGGAGAGTGAAGAATCCTT
 ACAGCAACAGAAAGTGAAGGGCTAAAAAACTAGAGAACTTCAAGAAAAAGAGGACGAAATCAAAACA
 TGGTTAGGAAAGTTTCTCTGAAGATGTAGAATATTTCAATTGCCAACAGGAGCTGGCTCAGAGTTGA
 ATAAACAGTATCAGATAGTAAAGAGTAAAGCTGTGAAGACAAGTAAATCTACATTTGGTCAAACAGA
 TTTTCCAGCTCATAGTCGGAAGCCGGCACCTCAAATGAGCCGAATATCTATGTAATGGATGGGACTC
 CCTATTGAGAGTGTAGCTGGGAAGATGAAGCCCTCATTGAAAGAAATCCAGAATTGCATTGACAGCT
 TCCACAGTAGGAACAACCTAAAAACCTCCCAACAAGAGAATGCAAGGCCTGAAGCAGAGACCAGGATT
 TGTAGCTTTAAAGAAACAACCTGCATATTTAGGAGGGGAGAATCTGGAACCTCGAGATTATCAGCTAGAA
 GGTCTAAACTGGCTAGCTCATTCTGGTGCAAG

ACGCGTACGCGGCCGCTCGAGCAGAAACTCATCTCAGAAGAGGATCTGGCAGCAAATGATATCCTGGATT
 ACAAGGATGACGACGATAAGGTTTAA

Protein Sequence:

>RC217803 representing NM_001042572
 Red=Cloning site Green=Tags(s)

MMRNKDKSQEEDSSLHSNASSHSASEEASGSDSGSQSESEQSDPGSGHGSESNSSSESSESQSESESES
 AGSKSQPVLPAAKEKPAKKERLADVKKMWEIYDPVYGVRRSNRSRQEPSRFNIEKEEASSGSESGSPKRR
 GQRQLKKQEKWKQEPSEDEQEQTSAESEPEQKVKARRPVPRRTVPKPRVKKQPKTQRGRKKQDSSDE
 DDDDEAPKRQTRRRRAAKNVSYKEDDDFEITDSDLLIEMTGEGVDEQDQDNSETIEKVLDSRLGKKGATGAS
 TTYAIEANGDPSGDFDTEKDEGEIQYLKWKWGSYIHSTWESESLQQQKVKGLKLENFKKKEDEIKQ
 WLGVSPEDVEYFNCQQLASELNKQYQIVERVIAVKTSKSTLGQTFPAHSRKPAPSNEPEYLCKWMGL
 PYSECSWEDEALIGKKFQNCIDSFHSRNNSKTIPTRECKALKQRPRFVALKKQPAYLGGENLELRDYQLE
 GLNWLHWSWCK

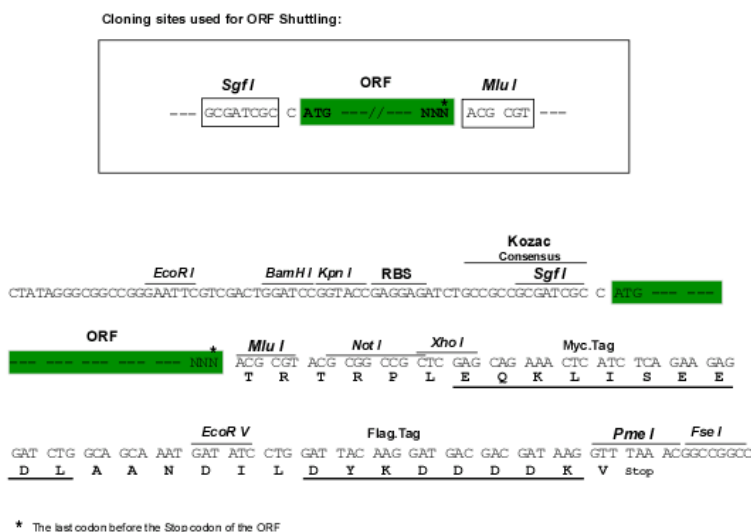
TRTRPLEQKLISEEDLAANDILDYKDDDDKV

Chromatograms:

https://cdn.origene.com/chromatograms/mk8063_g01.zip

Restriction Sites:

SgfI-MluI

Cloning Scheme:


ACCN: NM_001042572

ORF Size: 1503 bp

OTI Disclaimer: The molecular sequence of this clone aligns with the gene accession number as a point of reference only. However, individual transcript sequences of the same gene can differ through naturally occurring variations (e.g. polymorphisms), each with its own valid existence. This clone is substantially in agreement with the reference, but a complete review of all prevailing variants is recommended prior to use. [More info](#)

OTI Annotation: This clone was engineered to express the complete ORF with an expression tag. Expression varies depending on the nature of the gene.

Components: The ORF clone is ion-exchange column purified and shipped in a 2D barcoded Matrix tube containing 10ug of transfection-ready, dried plasmid DNA (reconstitute with 100 ul of water).

Reconstitution Method:

1. Centrifuge at 5,000xg for 5min.
2. Carefully open the tube and add 100ul of sterile water to dissolve the DNA.
3. Close the tube and incubate for 10 minutes at room temperature.
4. Briefly vortex the tube and then do a quick spin (less than 5000xg) to concentrate the liquid at the bottom.
5. Store the suspended plasmid at -20°C. The DNA is stable for at least one year from date of shipping when stored at -20°C.

RefSeq: [NM_001042572.3](#)

RefSeq Size: 2395 bp

RefSeq ORF: 1506 bp

Locus ID: 1106

UniProt ID: [O14647](#)

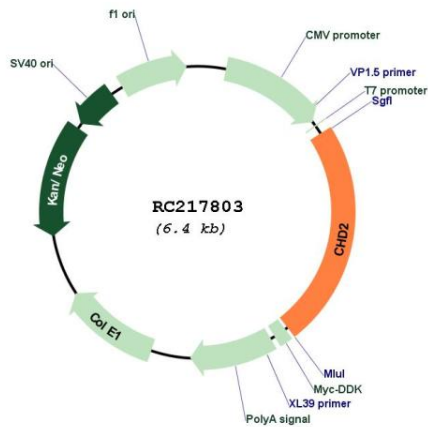
Cytogenetics: 15q26.1

Protein Families: Transcription Factors

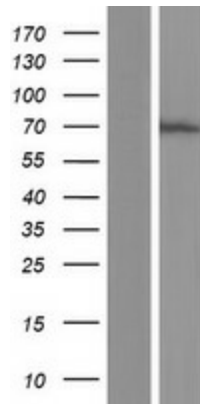
MW: 56.6 kDa

Gene Summary: The CHD family of proteins is characterized by the presence of chromo (chromatin organization modifier) domains and SNF2-related helicase/ATPase domains. CHD genes alter gene expression possibly by modification of chromatin structure thus altering access of the transcriptional apparatus to its chromosomal DNA template. Alternatively spliced transcript variants encoding distinct isoforms have been found for this gene. [provided by RefSeq, Jul 2008]

Product images:



Circular map for RC217803



Western blot validation of overexpression lysate (Cat# [LY420985]) using anti-DDK antibody (Cat# [TA50011-100]). Left: Cell lysates from untransfected HEK293T cells; Right: Cell lysates from HEK293T cells transfected with RC217803 using transfection reagent MegaTran 2.0 (Cat# [TT210002]).