

Product datasheet for RC217802

LUZP1 (NM_033631) Human Tagged ORF Clone

Product data:

| | |
|---------------------------|---|
| Product Type: | Expression Plasmids |
| Product Name: | LUZP1 (NM_033631) Human Tagged ORF Clone |
| Tag: | Myc-DDK |
| Symbol: | LUZP1 |
| Synonyms: | LUZP |
| Mammalian Cell Selection: | Neomycin |
| Vector: | pCMV6-Entry (PS100001) |
| E. coli Selection: | Kanamycin (25 ug/mL) |
| ORF Nucleotide Sequence: | >RC217802 representing NM_033631 Red=Cloning site Blue=ORF Green=Tags(s) |

TTTTGTAATACGACTCACTATAGGGCGGCCGGAATTCGTCGACTGGATCCGGTACCGAGGAGATCTGCC
GCCCGATCGCC

ATGGCCGAATTTACAAGCTACAAGGAGACGGCCTCCAGCCGCCACTTGCGGTTTAAAGCTACAGAGTCTAA
GCCCGCCTTGATGAGTTGGAGGAAGCCACAAAAACCTCCAGAAAGCAGAGGATGAACCTCTGGATCT
CCAGGACAAGGTGATTCAGGCAGAAGGTAGCAACTCCAGCATGTTGGCGGAGATTGAAGTCTGCGCCAG
CGGGTCTGAGAATTGAAGGCAAAGACGAGGAAATTAAGAGAGCAGAGGATCTGTGTCGTCTGATGAAGG
AGAACTTGAAGAGGAAGAAAACCTCACCCGGGAGCTGAAATCTGAGATTGAGCGGCTTCAGAAACGAAT
GGCTGAATTAGAGAAGCTAGAAGAGGCCTTCAGCAGGAGTAAGAATGACTGTACCCAGCTGTGCTGAGC
CTGAATGAGGAGAGAAATCTGACCAAGAAAATCTCCTCTGAGCTGGAATGCTCAGAGTCAAAGTAAAAG
AACTAGAATCTTCTGAGGACCGCCTGGATAAACTGAGCAGAGTTTAGCGTCAGAGTTAGAAAAGCTGAA
ATCATTAACTCTGAGCTTTGTAAGTGAAGAGAAAATACTTGAATGAAAAGGAGAAAAGAAAATGAGAAATTG
ATAAAAGAACTCACTCAAAAAGTAGAGCAGAACAAAAAATGAACCGAGATTATACAAGGAATGCTTCTA
ATCTGAAAGAAATGACCTACGGATTGAGGATGGCATCTTCCACACTGCCGTCCAAAGAAATCAAGAAG
GAAGGGTGGTCTGGACTACCTAAAGCAGGTAGAGAATGAAACAAGAAAACAAATCAGAAAAATGAAAAGAAC
CGCAATCAGGAAGACAACAAAGTCAAAGACCTTAACCAAGAGATTGAGAACTTAAAGACGCAATCAAAC
ACTTTGAATCGTTGGAAGAAGAGCTTAAGAAAATGAAGTCCAAAAATAACGACCTTCAGGATAATTACCT
AAGTGAACAAAATAAAAACAATTTATTAGCCAGCAACTGGAGGAGATAAAGCTACAAATCAAGAAACAG
AAAGAGTTAGAAAATGGAGAGGTAGAAGGGGAAGATGCTTTCCTGTCCAGCAAAGGCAGACATGAGAGGA
CTAAGTTTAGAGGCCACGGAAGTGAAGCTTCTGTGTCCAAGCACACAGCGCGGAACTGTCTCCTCAGCA
TAAGCGGGAACGACTCCGGAACAGGGAGTTTGTCTCAACAAATGAAAATATTCTCTGAGCAACAGGCAG
GTTTCTTCTCCAGTTTCAACACAGGAGGGCAGCAAAAGCTTCTCACATGGGGGTGAGTACAGACAGTG
GGACTCAGGAGACAAAGAAAAGTGAAGACCGGTTTGTACCCAGCTCCTCAAGAGCGAAGGGAAGAAGTC
TAGGGAGCAGCCCTCAGTGTGAGTCGCTACCCCGGCTGCTCAGGAGCACAGTAAAGCGTGAAGGGG



[View online »](#)

ACTTCCAAGCCAGGCACCGAGAGTGGACTGAAGGGAAAAGTGGAGAAGACAACACGAACGTTTGTGACA
 CCACCCATGGATCTGTTCCCAAGTACCCATTGGGTAGAGCTGACAAGGCTTCTGACACCTCCTCTGAGAC
 TGTCTTTGGCAAGAGGGGACACGTGCTTGGCAACGGAAGTCAAGTAACTCAGGCTGCAAACCTCTGGCTGT
 TCTAAGGCCATTGGAGCCCTGGCCTCATCTCGAAGATCCTCTCAGAAGGGCTCTCTAAAGGCAAAAAGG
 CTGCCAATGGCCTTGAGGCTGATAACAGTTGCCGAATTCCAAGGCTCCTGTTCTATCGAAGTATCCTTA
 TAGCTGTAGAAGCCAAGAGAACATCCTTCAGGGATTTTCAACCTCACATAAAGAAGGGGTTAATCAACCT
 GCAGCAGTTGTGATGGAAGACAGCAGTCCGCATGAAGCCTTGAGGTGTCGAGTCATCAAATCCAGTGCA
 GAGAGAAGCCAGACTCAGATGATGACTTGGACATAGCATCTCTTGTACTGCCAAGTTGGTAAATACAAC
 CATCACTCCAGAGCCAGAGCCAAAACCACAGCCTAACTCTAGAGAAAAGGCTAAAACCCGAGGGGACCT
 AGAACCTCCCTATTTGAGAATGATAAAGATGCTGGAATGGAGAATGAATCTGTGAAATCTGTCAGAGCCT
 CCACCAATACCATGGAGCTCCCAGATACCAATGGTGTGGGGTAAAAAGCCAAAGGCCCTTTAGCCCCAG
 AGAGGCGTTGCGGTCTAGAGCCATCATCAAACCTGTTATTGTTGATAAGGATGTGAAAAAATCATGGGA
 GGATCTGGAACAGAGACTACGTTGGAGAAAACAGAAACCCGTCTCAAACCCAGGGCCAAACAAAGTGACAA
 GTAGCATTACTATATATCCATCTGACAGCAGCAGCCCAGAGCTGCTCCGGGTGAGGCCCTGAGGGAGAG
 GCACACATCCACTAGCAATATCCAGGTGGGGCTGGCAGAGCTCACATCAGTTAGCAACCATGTCAGCTCC
 CCTTTTGAAGCTCTCCATTCAAAAACATGACATCACCCCTGCAGCTTGCAGAAGCGGAGAGAATGGCAGATG
 GGCCCTGAAGAACAGGCCAGAAAACAGTGGTCTCTCGGAGCAGCATTATAATCAAGCCATCGGATCCTGT
 GGAGAGGAATAGCCATGCACCTCCAGCGGAGACAATCAGGTGGAAAAGCCATAGTGCCCTTTCAGAAGTG
 GGCTTCTCAGATGCCAGACATGTTACTGTGCGGAATGCCTGGAAGAGTAGGCGAGACTTGAATCTTTAG
 AAGACCCCAACTCGAATAGGTAAAAACGTGGAATCTACCAATAGCAATGCCTACACCCAGAGGTCTTC
 CACAGACTTCTCAGAACTCGAACAGCCAGGTCTGCCTTTTGGAGCAGGGCACTCGAAGGGTAGGACCA
 AGTTCAGGGGATGCCCTGAGCCCTCCTCAGAAGGACCCAAAGTAGCCTCACTGTGTGAGAGGTGCTTA
 CCCGTGGAATCGGGTAGGAGACACCATCACTGTGCGAGCCTGGAACCACTCAGCAAGCATGGAGGAAGA
 AGGGGAAGACTGTACACTCAGTGTCTACAGGCAACTGCACAACCTCCCTGGATCCGTCTGAACTGCCTGGG
 AAGCAGGGGCTGCCAGAGTCTGGGCGAGTACGGGCCGAGGAACGATTACGGCCAACCAGGCCCTGTGCTG
 AGGAGAAC

ACGCGTACGCGGGCCGCTCGAGCAGAAAACATCTCAGAAGAGGATCTGGCAGCAAATGATATCCTGGATT
 ACAAGGATGACGACGATAAGGTTTAA

Protein Sequence:

>RC217802 representing NM_033631
 Red=Cloning site Green=Tags(s)

MAEFTSYKETASSRHLRFKQLSLSRRLDELEEATKNLQKADELDDLQDKVIQAEAGSNSSMLAEIEVLRQ
 RVLRIEGKDEEIKRAEDLCRLMKEKLEEEENLTRELKSEIERLQKRMAELEKLEEFSSKNDCTQLCLS
 LNEERNLTKKISSELEMLRVKVELESSEDRDLKTEQSLASELEKLSLTLFVSRKYLNKEKENEKLE
 IKELTQKLEQNKMNDRYTRNASLERNDLRIEDGISSTLPSKESRRKGGLDYKQVENE TRNKSENEKN
 RNQEDNKVKDLNQEIEKLTQIKHFELEEELKKMKSNNNDLQDNYLSEQNKNLLASQLEEIKLQIKKQ
 KELENVEVEGEDAFLSSKGRHERTKFRHGSEASVSKHTARELSPQHKRERLRNREFALNNENYSLSNRQ
 VSSPSFTNRRAAKASHMGVSTDSGTQETKTKEDRFVPSKSEGGKSREQPSVL SRYPPAAQEHSKAWKG
 TSKPGTESGLKGVKVEKTRTFSDTTHGSVPSDPLGRADKASDTSSETVFGKRGHV LNGSQTQAANS GC
 SKAIGALASSRRSSSEGLSKGKKAANGLEADNSCPNSKAPVLSKYPYSCR SQENILQGFSTSHKEGVNQP
 AAVVMEDSSPHEALRCRVIKSSGREKPDSDDDLDIASLVTAKLVNTTITPEPEPKQPNSREKAKTRGAP
 RTSLFENDKDAGMENESVKSVRASNTMELPDTNGAGVKSQRPFSPREALRSRAI IKPVI VDKDVKKIMG
 GSGTETTLEKQKPVSKPGPNKVTSSIT IYPSDSSPRAAPGEALRERHTSTSNIQVGLAELTSVSNHVSS
 PFELSIHKHDITLQLAEAERMADGPKNRPETVVSRSII IKPSDPVERN SHAPPAETIRWKSHPSEV
 GFSDARHVTVRNAWKSRRDLKSLLEDPPTRIGKNVESTNSNAYTQRSSTDFSELEQPRSC LFEQGTRRVGP
 SSGDAPEPSSRRQTSSLTYSEVLTRNRVGDITVAAWNHSASMEEEGEDCTLSVYRQLHNSLDPSELPG
 KQGLPESGRVRAEERLRPTRCAEEN

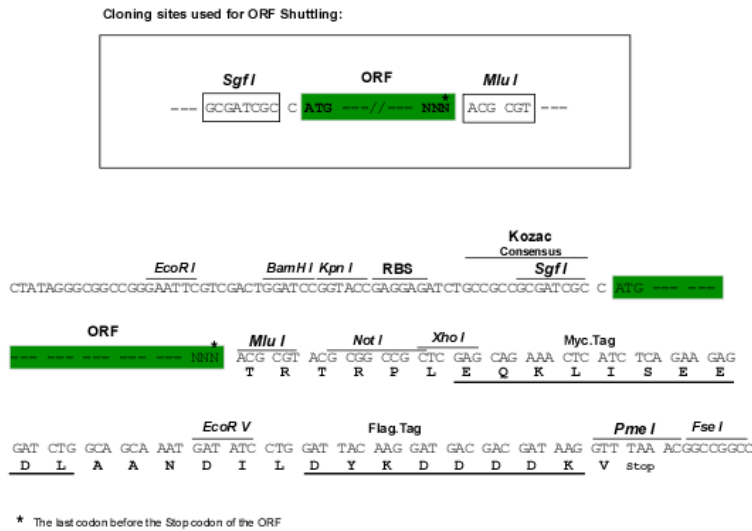
TRTRPLEQKLISEEDLAANDILDYKDDDDKV

Chromatograms:

https://cdn.origene.com/chromatograms/mk6596_b07.zip

Restriction Sites: SgfI-MluI

Cloning Scheme:



ACCN: NM_033631

ORF Size: 3228 bp

OTI Disclaimer: The molecular sequence of this clone aligns with the gene accession number as a point of reference only. However, individual transcript sequences of the same gene can differ through naturally occurring variations (e.g. polymorphisms), each with its own valid existence. This clone is substantially in agreement with the reference, but a complete review of all prevailing variants is recommended prior to use. [More info](#)

OTI Annotation: This clone was engineered to express the complete ORF with an expression tag. Expression varies depending on the nature of the gene.

Components: The ORF clone is ion-exchange column purified and shipped in a 2D barcoded Matrix tube containing 10ug of transfection-ready, dried plasmid DNA (reconstitute with 100 ul of water).

Reconstitution Method:

1. Centrifuge at 5,000xg for 5min.
2. Carefully open the tube and add 100ul of sterile water to dissolve the DNA.
3. Close the tube and incubate for 10 minutes at room temperature.
4. Briefly vortex the tube and then do a quick spin (less than 5000xg) to concentrate the liquid at the bottom.
5. Store the suspended plasmid at -20°C. The DNA is stable for at least one year from date of shipping when stored at -20°C.

Note: Plasmids are not sterile. For experiments where strict sterility is required, filtration with 0.22um filter is required.

RefSeq: [NM_033631.2](#), [NP_361013.2](#)

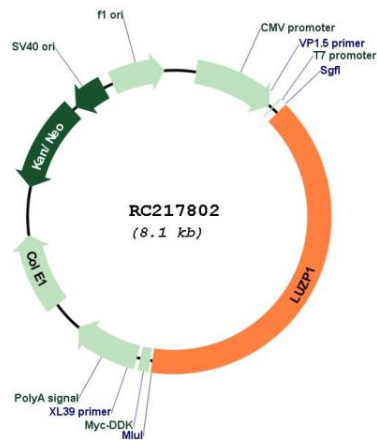
RefSeq Size: 7555 bp

RefSeq ORF: 3231 bp

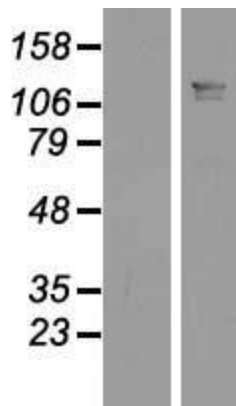
Locus ID: 7798
UniProt ID: [Q86V48](#)
Cytogenetics: 1p36.12
MW: 120.1 kDa

Gene Summary: This gene encodes a protein that contains a leucine zipper motif. The exact function of the encoded protein is not known. In mice this gene affects neural tube closure. Alternative splicing results in multiple transcript variants. [provided by RefSeq, Dec 2008]

Product images:



Circular map for RC217802



Western blot validation of overexpression lysate (Cat# [LY428164]) using anti-DDK antibody (Cat# [TA50011-100]). Left: Cell lysates from untransfected HEK293T cells; Right: Cell lysates from HEK293T cells transfected with [RC227732] using transfection reagent MegaTran 2.0 (Cat# [TT210002]).