

Product datasheet for **RC217791**

TACC1 (NM_006283) Human Tagged ORF Clone

Product data:

Product Type:	Expression Plasmids
Product Name:	TACC1 (NM_006283) Human Tagged ORF Clone
Tag:	Myc-DDK
Symbol:	TACC1
Synonyms:	Ga55
Mammalian Cell Selection:	Neomycin
Vector:	pCMV6-Entry (PS100001)
E. coli Selection:	Kanamycin (25 ug/mL)



[View online »](#)

ORF Nucleotide Sequence:

>RC217791 representing NM_006283
 Red=Cloning site Blue=ORF Green=Tags(s)

TTTTGTAATACGACTCACTATAGGGCGGCCGGAATTCGTCGACTGGATCCGGTACCGAGGAGATCTGCC
 GCC**CGGATCGCC**

ATGGCGTTAGCCCGTGGCAGATCCTGTCCCCGTGCAGTGGCGAAATGGACGTGGTCTCGCGTACGCG
 GCGGGGCCGCGCGAGGACGAGGCTGGCGGGCCGAGGGCGACCCGAGGAGGAGGATTCGCAAGCCGA
 GACCAAATCCTTGAGTTTCAGCTCGATTCTGAAGGTAATTTTGAGACTCCTGAAGCTGAAACCCCGATC
 CGATCACCTTTCAAGGAGTCTGTGATCCATCACTCGATTGGCAGGACCTGGGGCCAAAAGCCAAGAAT
 CACAAGAAGCTGATGAACAGCTTGTAGCAGAAGTGGTTGAAAAATGTTTCATCTAAGACTTGTCTAAACC
 TTCAGAAAATGAAGTGCCACAGCAGGCCATTGACTCTCACTCAGTCAAGAATTTTCAGAGAAGAACCTGAA
 CATGATTTTAGCAAAATTTCCATCGTGAGGCCATTTTCAATAGAAACGAAGGATTCACGGATATCTCGG
 CAGTCTCGGAACAAAAGCAGCTCATGGCTGTGTAAGTGCAGTCTCAGGCAAGGCTCTGCCTTCAGCCC
 GCCAGACGCCCTCCAGGACGAGGCGATGACAGAAGGCAGCATGGGGGTCAACCTCGAGGCCCTCCGCAGAA
 GCTGATCTAAAAGCTGGCAACTCCTGTCCAGAGCTTGTGCCAGCAGAAGAAGCAAGCTGAGAAAAGCCCA
 AGCCTGTCCCCCTGAGGAAGAAAGCAATTTGGAGGAGAGTTCTCAGACACCAACGCTGCTGTGGAGGGCAC
 ACCTCTCCCCAAGGCATCCTATCACTTCAGTCTGAAGAGTTGGATGAGAACACAAGTCTTTGCTAGGA
 GATGCCAGGTTCCAGAAGTCTCCCCCTGACATTAAGAAACTCCCGGCACCTCAGTAGTGACACCAACG
 ACTCAGGGGTTGAGCTGGGGGAGGAGTCCAGGAGCTCACCTCTCAAGCTTGAAGTTGATTTACAGAGA
 TACAGGAAACATAGAGGCCAGGAAAGCCCTTCCAAGGAAGCTTGGCAGGAAACTGGGTAGCACACTGACT
 CCCAAGATACAAAAGATGGCATCAGTAAGTCAAGCAGGTTTGAACAGCCTACAGACCCAGTGGCAGGAG
 ACGGGCCTCTCTCCAAACATCTTCCAAGCCAGATCCTAGTCAAGTGGGAGAGCCCAAGCTTCAACCCCTT
 TGGGAGCCACTCTGTTCTGCAGAACTCCCAACCCCTCTTCTGAGGGCTCCTACCACTTTGACCCAGAT
 AACTTTGACGAATCCATGGATCCCTTTAAACCAACTACGACCTTAACAAGCAGTACTTTTGTCTCCCA
 CTGGTAATCACGTTAATGAAATCTTAGAATCACCCAAGAAGGCAAGTTCGCGTTTAAACAGAGTGGCTG
 TAAGGTGAAGAAGCATGAAACTCAGTCTCTCGCCCTGGATGCATGTTCTCGGGATGAAGGGGAGTGCAT
 TCCAGATTTAGACATTTCTAATAGGGATGGCCATGCTACTGATGAGGAGAACTGGCATCCACGTCAT
 GTGGTCAGAAATCAGCTGGTCCGAGGTGAAAGGTGAGCCAGAGGAAGACCTGGAGTACTTTGAATGTT
 CAATGTTCTGTGTCTACCATAAATCATGCGTTTTTCATCCTCAGAAGCAGGCATAGAGAAGGAGACGTGC
 CAGAAGATGGAAGAAGACGGTCCACTGTGCTTGGGCTGCTGGAGTCTCTGCAGAGAAGGCCCTGTGT
 CGGTGTCCTGTGGAGGTGAGAGCCCCCTGGATGGGATCTGCCTCAGCGAATCAGACAAGACAGCCGTGCT
 CACCTTAATAAGAGAAGAGATAATTACTAAAGAGATTGAAGCAAATGAATGGAAGAAGAAATACGAAGAG
 ACCCGGCAAGAAGTTTTGGAGATGAGGAAAATTGTAGTGAATATGAAAAGACTATTGCTCAAATGATTG
 AAGATGAACAAAGGACAAGTATGACCTCTCAGAAGAGCTTCCAGCAACTGACCATGGAGAAGGAACAGGC
 CCTGGCTGACCTTAACCTGTGGAAAGGTCCCTTTCTGATCTCTTCAGGAGATATGAGAACCTGAAAGGT
 GTTCTGGAAGGGTTCAAGAAGAATGAAGAAGCCTTGAAGAAATGTGCTCAGGATTAAGTCCAGAGTTA
 ACAAGAGGAGCAGCGATACCAGGCCCTGAAAAATCCACGCAGAAGAGAACTGGACAAAGCCAATGAAGA
 GATTGCTCAGGTTCAACAAAAGCAAAGGCTGAGAGTGCAGCTCTCCATGCTGGACTCCGCAAAGAGCAG
 ATGAAGGTGGAGTCCCTGAAAAGGGCCCTGCAGCAGAAGAACAAGAAATTTGAAGAACTGACAAAAATCT
 GTGATGAGCTGATTGCAAGCTGGGAAAGACTGAC

ACGCGTACGCGGCCGCTCGAGCAGAACTCATCTCAGAAGAGGATCTGGCAGCAAATGATATCCTGGATT
 ACAAGGATGACGACGATAAGGTTTAA

Protein Sequence: >RC217791 representing NM_006283
Red=Cloning site Green=Tags(s)

MAFSPWQILSPVQWAKWTWSAVRGGAGEDEAGGPEGDPEEEDSQAETKSLSFSSDSEGNFETPEAETPI
RSPFKESCDPSLGLAGPAKSQESQEADEQLVAEVVEKCSSKTCSENEVPQQAIDSHSVKNFREPEE
HDFSKISIVRPFISIETKDSTDISAVLGTAAHGCVTAVSGKALPSSPPDALQDEAMTEGSMGVTLEASAE
ADLKAGNSCEPELVPSRRSKLRKPKVPLRKKAIIGGEFSDTNAAVEGTPLPKASYHFSPEELDENTSPLLG
DARFQKSPPDIKETPGTSSDTNDSGVELGEESRSPKLEFDFTEDTGNIEARKALPRKLGRKLGSTLT
PKIQKDGISKSAGLEQPTDPVARDGPLSQTSSKPDPSQWESPSFNPFSGSHSVLQNSPPLSSEGSYHFDPD
NFDESMDPFKPTTTLTSSDFCSPTGNHVNEILESPKKAKSRLITSGCKVKKHETQSLALDACSRDEGAVI
SQISDISNRDGHATDEEKLASTSCGQKSAGAEVKGEPEEDLEYFECSNVPVSTINHAFFSSEAGIEKETC
QKMEEDGSTVLGLESSEAEKAPVSVSCGGESPLDGICLSESDKTAVLTLIREEIIITKEIEANEWKKKYEE
TRQEVLEMRKIVAEYEKTI AQMIEDEQRTSMTSQKSFQQLTMEKEQALADLNSVERSLSDLFRRYENLKG
VLEGFKKNEEALKKCAQDYLRVKQEEQRYQALKIHAEKLDKANEEIAQVTRKAKAESAAALHAGLRKEQ
MKVESLERALQQKNQEIEELTKICDELI AKLGKTD

TRTRPLEQKLISEEDLAANDILDYKDDDDKV

Chromatograms: https://cdn.origene.com/chromatograms/mk8016_c10.zip

Restriction Sites: Sgfl-Mlul

Cloning Scheme:


ACCN: NM_006283

ORF Size: 2415 bp

OTI Disclaimer: The molecular sequence of this clone aligns with the gene accession number as a point of reference only. However, individual transcript sequences of the same gene can differ through naturally occurring variations (e.g. polymorphisms), each with its own valid existence. This clone is substantially in agreement with the reference, but a complete review of all prevailing variants is recommended prior to use. [More info](#)

OTI Annotation: This clone was engineered to express the complete ORF with an expression tag. Expression varies depending on the nature of the gene.

Components: The ORF clone is ion-exchange column purified and shipped in a 2D barcoded Matrix tube containing 10ug of transfection-ready, dried plasmid DNA (reconstitute with 100 ul of water).

Reconstitution Method:

1. Centrifuge at 5,000xg for 5min.
2. Carefully open the tube and add 100ul of sterile water to dissolve the DNA.
3. Close the tube and incubate for 10 minutes at room temperature.
4. Briefly vortex the tube and then do a quick spin (less than 5000xg) to concentrate the liquid at the bottom.
5. Store the suspended plasmid at -20°C. The DNA is stable for at least one year from date of shipping when stored at -20°C.

RefSeq: [NM_006283.1](#), [NP_006274.1](#)

RefSeq Size: 7758 bp

RefSeq ORF: 2418 bp

Locus ID: 6867

UniProt ID: [O75410](#)

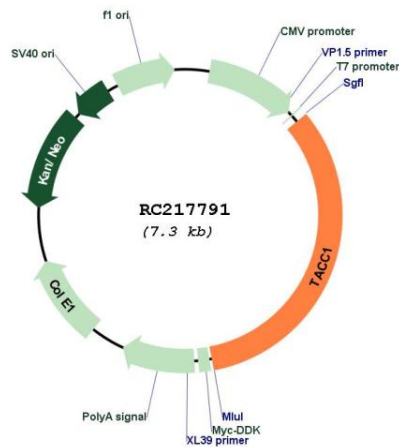
Cytogenetics: 8p11.22

Domains: TACC

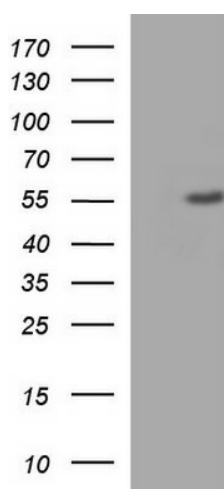
MW: 87.6 kDa

Gene Summary: This locus may represent a breast cancer candidate gene. It is located close to FGFR1 on a region of chromosome 8 that is amplified in some breast cancers. Several transcript variants encoding different isoforms have been found for this gene. [provided by RefSeq, Jun 2017]

Product images:



Circular map for RC217791



HEK293T cells were transfected with the pCMV6-ENTRY control (Cat# [PS100001], Left lane) or pCMV6-ENTRY TACC1 (Cat# RC217791, Right lane) cDNA for 48 hrs and lysed. Equivalent amounts of cell lysates (5 ug per lane) were separated by SDS-PAGE and immunoblotted with anti-TACC1 (Cat# [TA590577]).