

Product datasheet for **RC217784**

LENEP (NM_018655) Human Tagged ORF Clone

Product data:

Product Type: Expression Plasmids
Product Name: LENEP (NM_018655) Human Tagged ORF Clone
Tag: Myc-DDK
Symbol: LENEP
Synonyms: LEP503
Mammalian Cell Selection: Neomycin
Vector: pCMV6-Entry (PS100001)
E. coli Selection: Kanamycin (25 ug/mL)
ORF Nucleotide Sequence: >RC217784 representing NM_018655
Red=Cloning site Blue=ORF Green=Tags(s)

TTTTGTAATACGACTCACTATAGGGCGGCCGGAATTCGTCGACTGGATCCGGTACCGAGGAGATCTGCC
GCC**CGATCGCC**

ATGCAGCCCCGGACACAGCCCCTAGCCCAAACCTACCCTTCTCCTCGGAGGGGCCCTCGAGACTG
GGCTGCGGGTGCCTGTCATTAAGATGGGCACAGGGTGGGAGGGCTTCCAGCGACCCTGAAGGAAGTCGC
CTACATCCTCCTGCTGCTGGTGTATCAAGGAAGTCTGGAT

ACGGTACGCGGCCGCTCGAGCAGAACTCATCTCAGAAGAGGATCTGGCAGCAAATGATATCCTGGATT
ACAAGGATGACGACGATAAGGTTTAA

Protein Sequence: >RC217784 representing NM_018655
Red=Cloning site Green=Tags(s)

MQPRTQPLAQTLFFLLGGAPRDTGLRVPVIKMTGWEGFQRTLKEVAYILLCCWCIKELL

TRTRPLEQKLISEEDLAANDILDYKDDDDKV

Chromatograms: https://cdn.origene.com/chromatograms/mk8102_e03.zip

Restriction Sites: Sgfl-MluI



[View online »](#)

Cloning Scheme:


ACCN: NM_018655

ORF Size: 183 bp

OTI Disclaimer: The molecular sequence of this clone aligns with the gene accession number as a point of reference only. However, individual transcript sequences of the same gene can differ through naturally occurring variations (e.g. polymorphisms), each with its own valid existence. This clone is substantially in agreement with the reference, but a complete review of all prevailing variants is recommended prior to use. [More info](#)

OTI Annotation: This clone was engineered to express the complete ORF with an expression tag. Expression varies depending on the nature of the gene.

Components: The ORF clone is ion-exchange column purified and shipped in a 2D barcoded Matrix tube containing 10ug of transfection-ready, dried plasmid DNA (reconstitute with 100 ul of water).

Reconstitution Method:

1. Centrifuge at 5,000xg for 5min.
2. Carefully open the tube and add 100ul of sterile water to dissolve the DNA.
3. Close the tube and incubate for 10 minutes at room temperature.
4. Briefly vortex the tube and then do a quick spin (less than 5000xg) to concentrate the liquid at the bottom.
5. Store the suspended plasmid at -20°C. The DNA is stable for at least one year from date of shipping when stored at -20°C.

RefSeq: [NM_018655.3](#)

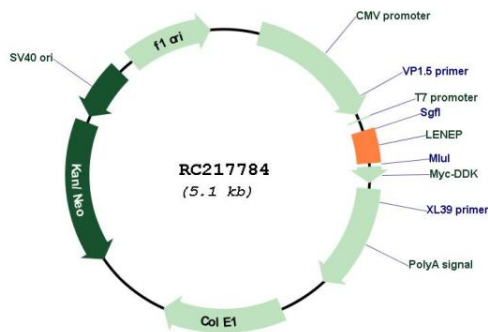
RefSeq Size: 671 bp

RefSeq ORF: 186 bp

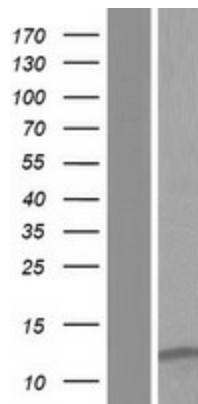
Locus ID: 55891
UniProt ID: [Q9Y5L5](#)
Cytogenetics: 1q21.3
MW: 6.9 kDa

Gene Summary: The ocular lens is a tissue of epithelial origin and devoid of blood vessels and nerves. Cells of the lens epithelium are responsible for the growth and maintenance of the lens through mitosis, protein synthesis, and active transport of ions and metabolites across the lens capsule. Lens epithelial protein is expressed exclusively in lens epithelial cells and may play a role in cell differentiation. [provided by RefSeq, Jul 2008]

Product images:



Circular map for RC217784



Western blot validation of overexpression lysate (Cat# [LY412962]) using anti-DDK antibody (Cat# [TA50011-100]). Left: Cell lysates from untransfected HEK293T cells; Right: Cell lysates from HEK293T cells transfected with RC217784 using transfection reagent MegaTran 2.0 (Cat# [TT210002]).