

Product datasheet for **RC217778**

REPS2 (NM_004726) Human Tagged ORF Clone

Product data:

Product Type:	Expression Plasmids
Product Name:	REPS2 (NM_004726) Human Tagged ORF Clone
Tag:	Myc-DDK
Symbol:	REPS2
Synonyms:	POB1
Mammalian Cell Selection:	Neomycin
Vector:	pCMV6-Entry (PS100001)
E. coli Selection:	Kanamycin (25 ug/mL)



[View online »](#)

ORF Nucleotide
Sequence:

>RC217778 representing NM_004726
Red=Cloning site Blue=ORF Green=Tags(s)

TTTTGTAATACGACTCACTATAGGGCGGCCGGGAATTCGTCGACTGGATCCGGTACCGAGGAGATCTGCC
GCC**CGGATCGCC**

ATGGAGGCGGCAGCGCGCGCGCGCGCGGCAGCGGCAGCGGCAGCGCGGGCGGGGGCTGTGGCTCCG
GGCCGCCCGCGCTGCTGCTGAGCGAGGGCGAGCAGCAGTGTACTCCGAGCTCTTCGCGCGCTGTGCCGG
CGCCGCGGGCGGGGGCCCCGGGTCTGGGCCCCCGAGGCCCGCAGAGTCGCCCGGCACGGCCACTGCG
GCCCGCGGCCCGTGGCTGACCTGTTTCGGGCATCGCAGCTGCCCGCGAGACGCTGCACCAGATCACAG
AACTGTGTGGTGCAAAGCGGGTTGGTTATTTGGTCCAACACAGTTTACATTGCCCTGAAATTAATTGC
TGCAGCACAATCTGGCCTCCCGTACGGATAGAGAGTATTAATGTGAATTGCCTCTGCCTCGCTTTATG
ATGTCAAAGAATGATGGTGAGATACGATTTGGGAACCCAGCTGAGCTGCATGGAATAAGTTTCAGATTC
CATATTTAACTACAGAAAAAATTCCTTCAAAGAATGGACGATGAGGATAAACAGCAGGAAACACAGTC
TCCACGATGTCACCCCTCGCCTCCCTCCTTCTCCCGCCTCATTACCAGAGGGTGCCTTGAGCCAT
GGCTACAGCAAATGCGGAGCAGCGCAGAACAGATGCATCCAGCACCTTATGAAGCTAGGCAGCCCTTG
TCCAGCCCAGGGATCCTCATCAGGGGGCCAGGAACCAAGCCCTTCGGCATCAGGCTTCCCTTATCCG
GTCCTTTTCAGTGGAGAGGGAACACAGGATAACAGCAGTTACCCCGACGAACCTTGAGGATAACAGAA
GAACAGCGCGAGTACTATGTCAATCAGTTCCGATCCCTTCAGCCAGACCAAGCTCTTTCATTTTCAGTT
CTGTGGCAAGAACTTCTCACCAATCAAAGCTTTCATTCCAGAACTCCTATATATGGGAGCTTAG
TGATGCTGACTGTGATGGAGCCCTGACCCTGCCTGAGTTCTGTGCTGCGTTTCATCTCATTGTGGCTCGG
AAGAACGGCTACCATTCCTGAGGGCCCTCCCTCCAACCTGCAGCCAGAATACCTGCAGGCAGCTTTTC
CTAAGCCCAAATGGGACTGTCAATTATTTGATTCTTATTCTGAGTCACTGCCGGCAAATCAACAACCTCG
TGACTTGAATCGGATGGAGAAGACATCTGTAAAGACATGGCTGACCTTCTGTCCCTAACCAGGATGTA
ACTAGTGATGACAAACAAGCTTTGAAAAGTACTATCAATGAAGCCTTACCAAAGGACGTGCTGAGGATC
CAGCAACTCCCAAGGATTCACACAGTCTCAAAGCAAGACCAAGATCCAGATCTTACTCTAGCACCTCCAT
AGAAGAGGCCATGAAAAGGGGCGAGGACCCTCCACCCCGCCACCTCGGCCACAGAAAACCCATTCCAGA
GCCTCCTCCTGGATCTGAATAAAGTCTTCCAGCCAGTGTGCCAGCTACCAAGTCAGGATTGTTACCCC
CACCACCTGCGCTCCCTCCAAGACCTTGTCCATCACAGTCTGAACAAGTGTGGAGGCCGAGTTACTCCC
ACAGCTGAGCAGAGCCCCATCCAGGCTGCAGAAAAGTAGTCCAGCAAAGAAGGATGTAAGTATTCTCAG
CCACCATCAAAGCCATTTCGTAGGAAATTCAGACCAGAAAACCAAGCTACAGAAAACCAAGACCTTCCA
CTGCTGCAAGTGGCCAGCTTCTGCGGCAACCATGAAACCGCATCCAACAGTCCAAAAGCAGTCTTCCAA
ACAGAAGAAGGCCATTCAAAGTCTATCCGAAAAATAAAGAGGCAAACGCAGTGTGGCTCGGCTGAAC
AGTGAGCTCCAGCAGCAGCTCAAGGAGTTTCATCAAGAACGAATTGCATTGAAAAACCAATTGGAACAAC
TTCGTCCGGTCACTGTGTTG

ACGGTACGCGGCCGCTCGAGCAGAACTCATCTCAGAAGAGGATCTGGCAGCAAATGATATCCTGGATT
ACAAGGATGACGACGATAAGGTTTAA

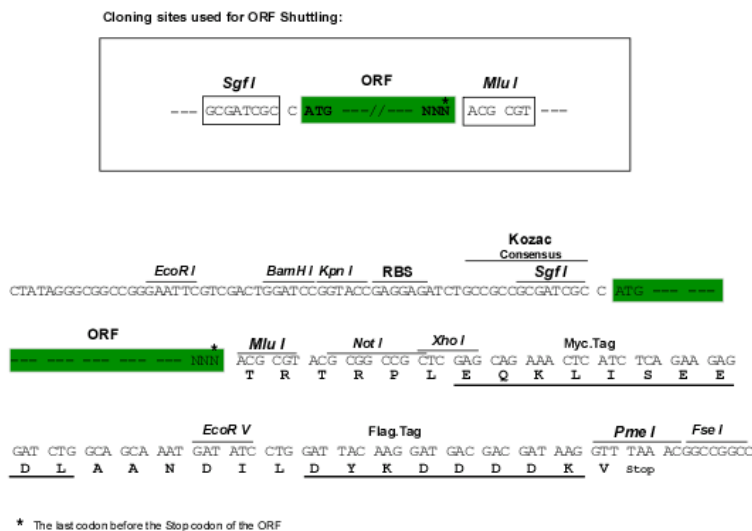
Protein Sequence: >RC217778 representing NM_004726
Red=Cloning site Green=Tags(s)

```
MEAAAAAAAAAAAAAAAAAGGGCGSGPPPLLLSEGEQQCYSELFARCAGAAGGGPGSGPPEAARVAPGTATA
AAGPVADLFRASQLPAETLHQITELCGAKRVGYFGPTQFYIALKLIAAAQSLPVRIESIKCELPLPRFM
MSKNDGEIRFGNPAELHGTVQIPYLTTEKNSFKRMDDEDKQEQETQSPTMSPLASPPSSPPHYQRVPLSH
GYSKLRSSAEQMHPAPYEARQPLVQPEGSSGGPGTKPLRHQASLIRSFVERELQDNSSYPDEPWRITE
EQREYYVNQFRSLQDPSSFISGSVAKNFFTKSKLSIPELSYIWELSDADCDGALTLPEFCAAFHLIVAR
KNGYPLPEGLPPTLQPEYLQAAFPKPKWDCQLFDSYSESLPANQQPRDLNRMEKTSVKDMADLPVFNQDV
TSDDKQALKSTINEALPKDVSEDPATPKDSNSLKARPRSRSYSSTIEEAMKRGEDPPTPPRPQKTHSR
ASSLDLNVFQPSVPAKSGLLPPPAPPPRCPQSQSEQVSEAEALLPQLSRAPSQAAESSPAKDKVLYSQ
PPSKPIRRKFRPENQATENQEPSTAASGPASAATMKPHPTVQKQSSKQKKAIQTAIRKNKEANAVLARLN
SELQQQLKEVHQERIALENQLEQLRPVTVL
```

TRTRPLEQKLISEEDLAANDILDYKDDDDKV

Restriction Sites: SgfI-MluI

Cloning Scheme:



ACCN: NM_004726

ORF Size: 1980 bp

OTI Disclaimer: The molecular sequence of this clone aligns with the gene accession number as a point of reference only. However, individual transcript sequences of the same gene can differ through naturally occurring variations (e.g. polymorphisms), each with its own valid existence. This clone is substantially in agreement with the reference, but a complete review of all prevailing variants is recommended prior to use. [More info](#)

OTI Annotation: This clone was engineered to express the complete ORF with an expression tag. Expression varies depending on the nature of the gene.

Components: The ORF clone is ion-exchange column purified and shipped in a 2D barcoded Matrix tube containing 10ug of transfection-ready, dried plasmid DNA (reconstitute with 100 ul of water).

Reconstitution Method:

1. Centrifuge at 5,000xg for 5min.
2. Carefully open the tube and add 100ul of sterile water to dissolve the DNA.
3. Close the tube and incubate for 10 minutes at room temperature.
4. Briefly vortex the tube and then do a quick spin (less than 5000xg) to concentrate the liquid at the bottom.
5. Store the suspended plasmid at -20°C. The DNA is stable for at least one year from date of shipping when stored at -20°C.

RefSeq: [NM_004726.3](#)

RefSeq Size: 7964 bp

RefSeq ORF: 1983 bp

Locus ID: 9185

UniProt ID: [Q8NFH8](#)

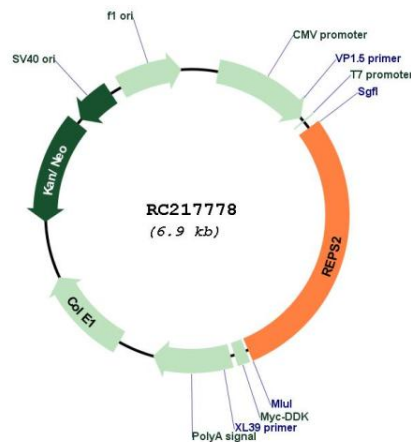
Cytogenetics: Xp22.2

Domains: EH, EFh

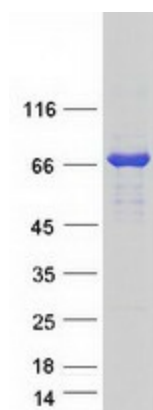
MW: 71.4 kDa

Gene Summary: The product of this gene is part of a protein complex that regulates the endocytosis of growth factor receptors. The encoded protein directly interacts with a GTPase activating protein that functions downstream of the small G protein Ral. Its expression can negatively affect receptor internalization and inhibit growth factor signaling. Multiple transcript variants encoding different isoforms have been found for this gene. [provided by RefSeq, Jul 2008]

Product images:



Circular map for RC217778



Coomassie blue staining of purified REPS2 protein (Cat# [TP317778]). The protein was produced from HEK293T cells transfected with REPS2 cDNA clone (Cat# RC217778) using MegaTran 2.0 (Cat# [TT210002]).