

Product datasheet for **RC217777**

VR1 (TRPV1) (NM_080706) Human Tagged ORF Clone

Product data:

Product Type:	Expression Plasmids
Product Name:	VR1 (TRPV1) (NM_080706) Human Tagged ORF Clone
Tag:	Myc-DDK
Symbol:	VR1
Synonyms:	VR1
Mammalian Cell Selection:	Neomycin
Vector:	pCMV6-Entry (PS100001)
E. coli Selection:	Kanamycin (25 ug/mL)



[View online »](#)

ORF Nucleotide Sequence:

>RC217777 representing NM_080706
 Red=Cloning site Blue=ORF Green=Tags(s)

TTTTGTAATACGACTCACTATAGGGCGGCCGGAATTCGTCGACTGGATCCGGTACCGAGGAGATCTGCC
 GCC**CGGATCGCC**

ATGAAGAAATGGAGCAGCACAGACTTGGGGCAGCTGCGGACCCACTCCAAAAGGACACCTGCCAGACC
 CCCTGGATGGAGACCCTAACTCCAGGCCACCTCCAGCCAAGCCCCAGCTCTCCACGGCCAAGAGCCGCAC
 CCGGCTCTTTGGGAAGGGTGACTCGGAGGAGGCTTCCCGGTGGATTGCCCTCACGAGGAAGGTGAGCTG
 GACTCCTGCCGACCATCACAGTCAGCCCTGTTATCACCATCCAGAGGCCAGGAGACGGCCCCACCGGTG
 CCAGGCTGCTGTCCAGGACTCTGTGCCGCCAGCACCAGAGAAGACCCTCAGGCTCTATGATCGCAGGAG
 TATCTTTGAAGCCGTTGCTCAGAATAACTGCCAGGATCTGGAGAGCCTGCTGCTTCTGCAGAAGAGC
 AAGAAGCACCTCACAGACAACGAGTTCAAAGACCCTGAGACAGGGAAGACCTGTCTGCTGAAAGCCATGC
 TCAACCTGCACGACGGACAGAACACCACCATCCCCCTGCTCCTGGAGATCGCGCGGCAAACGGACAGCCT
 GAAGGAGCTTGTCAACGCCAGCTACACGGACAGCTACTACAAGGGCCAGACAGCACTGCACATCGCCATC
 GAGAGACGCAACATGGCCCTGGTACCCTCCTGGTGGAGAACGGAGCAGACGTCCAGGCTGCGGCCCATG
 GGGACTTCTTTAAGAAAACCAAAGGGCGGCCCTGGATTCTACTTCGGTGAAGTGCCTGTCCCTGGCCGC
 GTGCACCAACAGCTGGGCATCGTGAAGTTCCTGCTGCAGAACTCCTGGCAGACGGCCGACATCAGCGCC
 AGGGACTCGGTGGGAACACGGTGTGCACGCCCTGGTGGAGGTGGCCGACAACACGGCCGACAACACGA
 AGTTTGTGACGAGCATGTACAATGAGATTCTGATGCTGGGGGCCAAACTGCACCCGACGCTGAAGCTGGA
 GGAGCTCACCAACAAGAAGGGAATGACGCCGCTGGCTCTGGCAGCTGGGACCGGGAAGATCGGGGTCTTG
 GCCTATATTCTCCAGCGGAGATCCAGGAGCCCGAGTGCAGGCACCTGTCCAGGAAGTTCACCGAGTGGG
 CCTACGGGCCCGTGCACTCCTCGCTGTACGACCTGTCTGCATCGACACCTGCGAGAAGAAGTTCGGTGG
 GGAGGTGATCGCCTACAGCAGCAGCGAGACCCCTAATCGCCACGACATGCTCTTGGTGGAGCCGCTGAAC
 CGACTCCTGCAGGACAAGTGGGACAGATTCTGCAAGCGCATCTTCTACTTCAACTTCTGGTCTACTGCC
 TGTACATGATCATCTTACCATGGCTGCCTACTACAGGCCGTTGGATGGCTTGCCTCCCTTAAAGATGGA
 AAAAACTGGAGACTATTTCCGAGTTACTGGAGAGATCCTGTGTGTTAGGAGGAGTCTACTTCTTTTTTC
 CGAGGGATTAGTATTTCTGCAGAGGCCGCGCTCGATGAAGACCCTGTTTGTGGACAGCTACAGTGAGA
 TGCTTTTCTTCTGCAGTCACTGTTTATGCTGGCCACCGTGGTGTACTTCAGCCACCTCAAGGAGTA
 TGTGGCTTCCATGGTATTCTCCCTGGCCTTGGGCTGGACCAACATGCTCTACTACACCCGCGGTTTCCAG
 CAGATGGGCATCTATGCCGTCATGATAGAGAAGATGATCCTGAGAGACCTGTGCCGTTTTCATGTTTGTCT
 ACATCGTCTTCTTGTCCGGTTTTCCACAGCGGTGGTGCAGCTGATTGAAGACGGGAAGAATGACTCCCT
 GCCGCTGAGTCCACGTGCACAGGTGGCGGGGCCCTGCCTGCAGGCCCCCGATAGCTCCTACAACAGC
 CTGTACTCCACCTGCCTGGAGCTGTTCAAGTTCACCATCGGCATGGGCGACCTGGAGTTCACTGAGAACT
 ATGACTTCAAGGCTGTCTTATCATCTCTGCTGGCCTATGTAATTCTCACCTACATCCTCCTGCTCAA
 CATGCTCATCGCCCTCATGGGTGAGACTGTCAACAAGATCGCACAGGAGAGCAAGAACATCTGGAAGCTG
 CAGAGAGCCATCACCATCCTGGACACGGAGAAGAGCTTCTTAAGTGCATGAGGAAGGCCTTCCGCTCAG
 GCAAGCTGCTGCAGGTGGGTACACACCTGATGGCAAGGACGACTACCGGTGGTGTCTCAGGTTGGACGA
 GGTTGAAGTGGACACCTGGAACACCAACGTGGGCATCATCAACGAAGACCCGGGCAACTGTGAGGGCGTC
 AAGCGCACCTGAGCTTCTCCCTGCGGTCAAGCAGAGTTTCAGGCAGACACTGGAAGAAGTTCCTGCTGG
 TCCCCCTTTAAGAGAGGCAAGTCTCGAGATAGGCACTGCTCAGCCCAGGAAGTTTATCTGCGACA
 GTTTTCAGGGTCTCTGAAGCCAGAGGACGCTGAGGTCTTCAAGAGTCTGCCGCTTCCGGGGAGAAG

ACGCGTACGCGGCCGCTCGAGCAGAACTCATCTCAGAAGAGGATCTGGCAGCAAATGATATCCTGGATT
 ACAAGGATGACGACGATAAGGTTTAA

Protein Sequence: >RC217777 representing NM_080706
Red=Cloning site Green=Tags(s)

MKKWSSTDLGAAADPLQKDTCPDPLDGDPNRPPPAKPQLSTAKSRTRLFGKGDSEEAFPVDCPHEEGEL
DSCPTITVSPVITIQRPDGPPTGARLLSQDSVAASTEKTLRLYDRRSIFEAVAQNNCQDLESLLLFLQKS
KKHLTDNEFKDPETGKTCLLKAMLNLDHGQNTTIPLLLEIARQTDLSKELVNASYTDSYKGGTALHIAI
ERRNMALVTLVENGADVQAAAHGDFFKKTKGRPGFYFGELPLSLAACTNQLGIVKFLQNSWQTADISA
RDSVGNVTLHALVEVADNTADNTKFVTSMYNEILMLGAKLHPTLKLEELTNKKGMTPLALAAGTGKIGVL
AYILQREIQEPECRHLSRKFTWAYGPHSSLYDLSCIDTCEKNSVLEVIAYSSSETPNRHMMLLVEPLN
RLLQDKWDRFVKRIFYFNFLVYCLYMIIFTMAAYRVPDGLPPFKMEKTGDYFRVTGEILSVLGGVYFFF
RGIQYFLQRRPSMKTLFVDSYSEMLFFLQSLFMLATVVL YFSHLKEYVASMVFLALGWTNMLYYTRGFQ
QMGYAVMIEKMILRDLCRFMFVYIVFLFGFSTAVVTLIEDGKNDSLPESTSHRWRGPACRPPDSSYNS
LYSTCLELKFFTIGMGDLEFTENYDFKAVFIILLLAYVILTYILLNMLIALMGETVNKIAQESKNIWKL
QRAITILDTEKSFLLKCMRKAFRSGKLLQVGYTPDGKDDYRWCFRVDEVNWTWNTNVGIINEDPGNCEGV
KRTLFSLSRVSRRVSGRHWKFNALVPLLREASARDRQSAQPPEEVYLRQFSGSLKPDAEVFKSPAASGEK

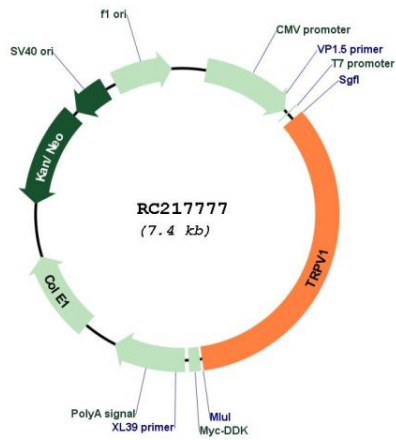
TRTRPLEQKLISEEDLAANDILDYKDDDDKV

Chromatograms: https://cdn.origene.com/chromatograms/mk6097_a03.zip

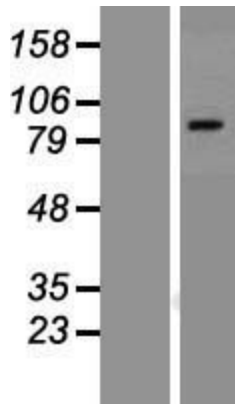
Restriction Sites: Sgfl-Mlul

OTI Annotation:	This clone was engineered to express the complete ORF with an expression tag. Expression varies depending on the nature of the gene.
Components:	The ORF clone is ion-exchange column purified and shipped in a 2D barcoded Matrix tube containing 10ug of transfection-ready, dried plasmid DNA (reconstitute with 100 ul of water).
Reconstitution Method:	<ol style="list-style-type: none">1. Centrifuge at 5,000xg for 5min.2. Carefully open the tube and add 100ul of sterile water to dissolve the DNA.3. Close the tube and incubate for 10 minutes at room temperature.4. Briefly vortex the tube and then do a quick spin (less than 5000xg) to concentrate the liquid at the bottom.5. Store the suspended plasmid at -20°C. The DNA is stable for at least one year from date of shipping when stored at -20°C.
RefSeq:	NM_080706.3
RefSeq Size:	4415 bp
RefSeq ORF:	2520 bp
Locus ID:	7442
UniProt ID:	Q8NER1
Cytogenetics:	17p13.2
Protein Families:	Druggable Genome, Ion Channels: Transient receptor potential, Transmembrane
Protein Pathways:	Neuroactive ligand-receptor interaction
MW:	94.8 kDa
Gene Summary:	Capsaicin, the main pungent ingredient in hot chili peppers, elicits a sensation of burning pain by selectively activating sensory neurons that convey information about noxious stimuli to the central nervous system. The protein encoded by this gene is a receptor for capsaicin and is a non-selective cation channel that is structurally related to members of the TRP family of ion channels. This receptor is also activated by increases in temperature in the noxious range, suggesting that it functions as a transducer of painful thermal stimuli in vivo. Four transcript variants encoding the same protein, but with different 5' UTR sequence, have been described for this gene. [provided by RefSeq, Jul 2008]

Product images:



Circular map for RC217777



Western blot validation of overexpression lysate (Cat# [LY412871]) using anti-DDK antibody (Cat# [TA50011-100]). Left: Cell lysates from untransfected HEK293T cells; Right: Cell lysates from HEK293T cells transfected with [RC223028] using transfection reagent MegaTran 2.0 (Cat# [TT210002]).