

Product datasheet for **RC217776**

MST3 (STK24) (NM_003576) Human Tagged ORF Clone

Product data:

Product Type:	Expression Plasmids
Product Name:	MST3 (STK24) (NM_003576) Human Tagged ORF Clone
Tag:	Myc-DDK
Symbol:	MST3
Synonyms:	HEL-S-95; MST3; MST3B; STE20; STK3
Mammalian Cell Selection:	Neomycin
Vector:	pCMV6-Entry (PS100001)
E. coli Selection:	Kanamycin (25 ug/mL)



[View online »](#)

ORF Nucleotide Sequence:

>RC217776 representing NM_003576
 Red=Cloning site Blue=ORF Green=Tags(s)

TTTTGTAATACGACTCACTATAGGGCGGCCGGAATTCGTCGACTGGATCCGGTACCGAGGAGATCTGCC
 GCC**CGGATCGCC**

ATGGACTCCAGAGCCAGCTTTGGGACTGGCCTTGAATAAAAGGAGGGCCACTCTACCTCATCCTGGAG
 GGAGCACGAACCTAAAGGCAGACCCAGAAGAGCTTTTTACAAAACCTAGAGAAAATTGGGAAGGGCTCCTT
 TGGAGAGGTGTTCAAAGGCATTGACAATCGGACTCAGAAAAGTGGTTGCCATAAAGATCATTGATCTGGAA
 GAAGCTGAAGATGAGATAGAGGACATCAACAAGAAATCACAGTCTGAGTCAAGTGTGACAGTCCATATG
 TAACCAAAATATTATGGATCCTATCTGAAGGATACAAAATTATGGATAATAATGGAATATCTTGGTGGAGG
 CTCCGCACTAGATCTATTAGAACCTGGCCATTAGATGAAACCCAGATCGCTACTATATTAAGAGAAATA
 CTGAAAGGACTCGATTATCTCCATTCGGAGAAGAAAATCCACAGAGACATTAAGCGGCCAACGCTCTGC
 TGTCTGAGCATGGCGAGGTGAAGCTGGCGGACTTTGGCGTGGCTGGCCAGCTGACAGACACCCAGATCAA
 AAGGAACACCTTCGTGGGCACCCATTCTGGATGGCACCCGAGGTCATCAACAGTTGGCCTATGACTCG
 AAGGCAGACATCTGGTCCCTGGGATAACAGCTATTGAACTTGCAAGAGGGGAACCACCTATTCCGAGC
 TGCACCCCATGAAAGTTTTATTCCCTATTCCAAAGAACAACCCACCGACGTTGGAAGGAAACTACAGTAA
 ACCCCTCAAGGAGTTTGTGGAGGCTGTTTGAATAAAGGAGCCGAGCTTTAGACCCACTGCTAAGGAGTTA
 TTGAAGCACAAGTTTATACTACGCAATGCAAAGAAAATTCCTACTTGACCGAGCTCATCGACAGGTACA
 AGAGATGGAAGGCCGAGCAGAGCCATGACGACTCGAGCTCCGAGGATCCGACCGGAAACAGATGGCCA
 AGCCTCGGGGGCAGTGATTCTGGGGACTGGATCTTACAATCCGAGAAAAAGATCCCAAGAATCTCGAG
 AATGGAGCTCTTCAGCCATCGGACTTGGACAGAAAATAGATGAAAGACATCCCAAAGAGGCCTTTCTCTC
 AGTGTATCTACAATTATTTCTCTCTGTTTGCAGAGTTGAAGGAGAAGAGCCAGGCGTGGGAGGGAA
 CTTGGGGTCCATTGAAGAGCTGCGAGGGCCATCTACCTAGCGGAGGAGGCGTGCCTGGCATCTCCGAC
 ACCATGGTGGCCAGCTCGTGCAGCGGCTCCAGAGATACTCTTAAGTGGTGGAGGAACCTCATCCAC

ACGCGTACGCGGCCGCTCGAGCAGAAACTCATCTCAGAAGAGGATCTGGCAGCAATGATATCCTGGATT
 ACAAGGATGACGACGATAAGGTTTAA

Protein Sequence:

>RC217776 representing NM_003576
 Red=Cloning site Green=Tags(s)

MDSRAQLWGLALNKRRATLPHPGGSTNLKADPEELFTKLEKIGKGSFGEVFKGIDNRTQKVVAIKIIDLE
 EAEDIEDIQQEITVLSQCDSPYVTKYYGSYLKDTKLWIIMEYLGGSALDLEPGPLDETIATILREI
 LKGLDYLHSEKKIHRDIKAANVLLSEHGEVKLADFGVAGQLTDTQIKRNTFVGTFFWMAPEVIKQLAYDS
 KADIWSLGITAIELARGEPPHSELHPMKVLFILPKNNPPTLEGNYSKPLKEFVEACLNKEPSFRPTAKEL
 LKHKFIILRNAKTSYLTELIDRYRKAQEQSHDDSSSESDAETDQASGGSDSGDWIFTIREKDPKNLE
 NGALQPSDLDRNKMKDIPKRPFSQCLSTIISPLFAELKEKSQACGGNLSIEELRGAIYLAEEACPGISD
 TMAVQLVQRLQRYSLSGGGTSSH

TRTRPLEQKLISEEDLAANDILDYKDDDDKV

Chromatograms:

https://cdn.origene.com/chromatograms/mg4089_b02.zip

Restriction Sites:

SgfI-MluI

Cloning Scheme:

ACCN:

NM_003576

ORF Size:

1329 bp

OTI Disclaimer:

Due to the inherent nature of this plasmid, standard methods to replicate additional amounts of DNA in E. coli are highly likely to result in mutations and/or rearrangements. Therefore, OriGene does not guarantee the capability to replicate this plasmid DNA. Additional amounts of DNA can be purchased from OriGene with batch-specific, full-sequence verification at a reduced cost. Please contact our customer care team at custsupport@origene.com or by calling 301.340.3188 option 3 for pricing and delivery.

The molecular sequence of this clone aligns with the gene accession number as a point of reference only. However, individual transcript sequences of the same gene can differ through naturally occurring variations (e.g. polymorphisms), each with its own valid existence. This clone is substantially in agreement with the reference, but a complete review of all prevailing variants is recommended prior to use. [More info](#)

OTI Annotation:

This clone was engineered to express the complete ORF with an expression tag. Expression varies depending on the nature of the gene.

Components:

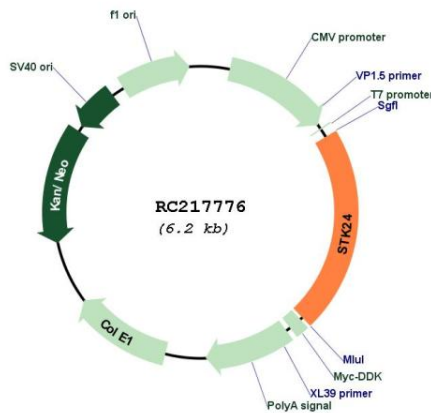
The ORF clone is ion-exchange column purified and shipped in a 2D barcoded Matrix tube containing 10ug of transfection-ready, dried plasmid DNA (reconstitute with 100 ul of water).

Reconstitution Method:

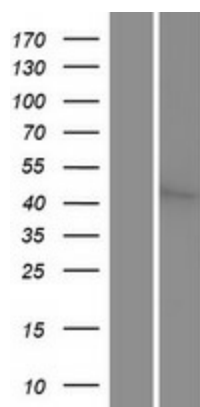
1. Centrifuge at 5,000xg for 5min.
2. Carefully open the tube and add 100ul of sterile water to dissolve the DNA.
3. Close the tube and incubate for 10 minutes at room temperature.
4. Briefly vortex the tube and then do a quick spin (less than 5000xg) to concentrate the liquid at the bottom.
5. Store the suspended plasmid at -20°C. The DNA is stable for at least one year from date of shipping when stored at -20°C.

Note:	Plasmids are not sterile. For experiments where strict sterility is required, filtration with 0.22um filter is required.
RefSeq:	<u>NM_003576.4, NP_003567.2</u>
RefSeq Size:	4539 bp
RefSeq ORF:	1332 bp
Locus ID:	8428
UniProt ID:	<u>Q9Y6E0</u>
Cytogenetics:	13q32.2
Domains:	ppkinase, TyrKc, S_TKc
Protein Families:	Druggable Genome, Protein Kinase
MW:	49.1 kDa
Gene Summary:	This gene encodes a serine/threonine protein kinase that functions upstream of mitogen-activated protein kinase (MAPK) signaling. The encoded protein is cleaved into two chains by caspases; the N-terminal fragment (MST3/N) translocates to the nucleus and promotes programmed cells death. There is a pseudogene for this gene on chromosome X. Alternative splicing results in multiple transcript variants. [provided by RefSeq, Nov 2013]

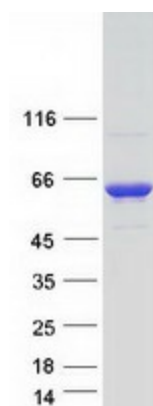
Product images:



Circular map for RC217776



Western blot validation of overexpression lysate (Cat# [LY418583]) using anti-DDK antibody (Cat# [TA50011-100]). Left: Cell lysates from untransfected HEK293T cells; Right: Cell lysates from HEK293T cells transfected with RC217776 using transfection reagent MegaTran 2.0 (Cat# [TT210002]).



Coomassie blue staining of purified STK24 protein (Cat# [TP317776]). The protein was produced from HEK293T cells transfected with STK24 cDNA clone (Cat# RC217776) using MegaTran 2.0 (Cat# [TT210002]).