

## Product datasheet for RC217774

### I Afadin (AFDN) (NM\_001040000) Human Tagged ORF Clone

#### Product data:

Product Type:	Expression Plasmids
Product Name:	I Afadin (AFDN) (NM_001040000) Human Tagged ORF Clone
Tag:	Myc-DDK
Symbol:	I Afadin
Synonyms:	AF6; I-afadin; MLL-AF6; MLLT4
Mammalian Cell Selection:	Neomycin
Vector:	pCMV6-Entry (PS100001)
E. coli Selection:	Kanamycin (25 ug/mL)
ORF Nucleotide Sequence:	>RC217774 representing NM_001040000 Red=Cloning site Blue=ORF Green=Tags(s)

TTTTGTAATACGACTCACTATAGGGCGGCCGGAATTCGTCGACTGGATCCGGTACCGAGGAGATCTGCC  
GCC**CGATCGCC**

ATGTCGGCGGGCGCCGTGACGAGGAGCGGCGGAAGCTGGCCGACATCATCCACCACTGGAACGCCAACCGCTGGACCTGTTTCGAGATCAGCCAGCCGACCGAGGATTTGGAGTTCCATGGAGTGATGAGATTTTATTTCAAGATAAAGCTGCTGGAACTTTGCAACAAAATGTATTCGGTCTCTAGTACTGCCCACTCAAGATGTAATCGAAACGCTCGCGGAGAAATTCGACCTGATATGCGAATGCTGTCCTCTCCAAGTATTCCTCTATGAAGTGCATGTCAGCGGAGAAAGAAGATTGGATATAGATGAGAAACCTCTAGTTGTACAAGTGAATTGGAACAAAGATGATCGGGAAGGCAGATTTGTTCTTAAGAATGAGAATGACGCCATTCTCCTAAGAAGGCTCAAAGTAATGGACCTGAAAAGCAGGAAAAAGAAGGGTTATCCAGAACTCAAGAGAAGTCTCTCAAAGAAGAAAAAGAGAAAAAGAGAGAAAAAGAGGCATTGCGACAGGCATCTGATAAAGATGATAGACCTTTCCAAGGGGAGGATGTTGAAAATTCGACTGGCTGCTGAGGTTTACAAAGACATGCCGAAACCAGCTTTACTCGAACCATTTCTAATCCTGAGGTGTTATGAAACGACGGAGGCAGCAAAAATTTGAAAAAGAAATGCAGGAATTTTCGGAGCTCAGATGGCGGCCTGATTCAGTGGAACATTGAGAATTTATGCAGATAGTTTAAAACCAATATCCCTACAAGACAATCCTGCTGTCTACTACAGATCCTGCAGACTTTGCTGTGGCTGAACTTTAGAGAAGTATGGTCTGAAAAAGAAAACCCTAAGGATTACTGCATCGCCCGGTTATGCTTCTCTCTGGAGCCCAGCATTCTGATGAAAAGGGTGCTAAAGAAATTTATTCTTGATGATGATGAGTGCCTTTACAATCTTCAGGAATGGCCAAGTGACAAAGGGATTTTAGTCTTTCAGTTGAAGAGGAGGCCACCAGACCACATCCCAAAGAAAACCAAGAAACACTTGGAAAGGCAAGACACCCAAGGAAAGGAGAGAGCTGACGGTCTGGCTATGGCTCCACCCTTCTCCGAGAGCTGCCCTATTTAGTAGAGTTAAGCCAGGGAGAAGGAATCACTTTGCCACTACAATACACTTACGAAGATGTTTCTGACTCTAGAGATAAGCCAAAGCTTTACCGCTTCAGTTAAGTGTACTGAAGTTGGGACAGAAAAGTTGGATGACAACTCTATCCAGTTGTTGGCCAGGAATTCAGCCCCATCACTGTGACCTTACCAACATGGATGGAGTGGTCACTGTGACGCCAGAAAGTATGGAAGCAGAAACCTACGTGGAAGGCCAGCGCATCTCAGAAACCACCATGCTGCAGAGTGGCATGAAAGTGCAG



[View online >](#)

TTTGGGGCGTCCCATGTATTTAAGTTTGTGGACCCAGTCAGGATCATGCTCTTGCAAAAAGATCTGTGG  
 ATGGAGGCCTGATGGTTAAGGGCCAAGACATAAACCTGGAATTGTTTCAGGAGACAACTTTTGATTTGGG  
 AGGAGATATTCATAGTGGGACAGCATTACCGACAAGCAAGAGCACCCTAGGCTGGACAGCGACAGAGTG  
 TCGTCTGCCTCTAGCACAGCCGAGCGGGGAATGGTGAAGCCGATGATCAGAGTAGAACAGCAGCCAGATT  
 ATCGCAGGCAAGAAAGCAGAACACAGGATGCTTCTGGGCTGAGCTGATACTACCTGCAAGCATTGAATT  
 CAGGGAAAAGTTCTGAAGATTCATTTTGTCTGCCATTATAAATACTAATAGCTCTACAGTCCACTTT  
 AAGTTGTCCCCTACATATGTATTATATATGTCATGCCGGTATGTATTGTCCAACCCAGTACAGACCTGACA  
 TCAGCCCTACAGAGCGCACACATAAAGTCATTGCAGTCGCAACAAGATGGTGAGCATGATGGAGGTGT  
 CATCCAGAAACAGAAGAATATTGCAAGGGCACTTGCCCTCTGGATGGCAAATGCATCTGAACTTCTCAAC  
 TTCATTAAGCAAGACCGAGACCTTAGTCGGATCACACTGGATGCTCAAGATGTTTTAGCACATTTGGTTC  
 AAATGGCATTTAAATACTTGGTTCAGTCTTCAATCAGAACTTAATAATTACATGCCAGCCTTTCTAGA  
 TGACCCTGAAGAGAACAGTCTGCAACGACCAAAAATAGATGATGTGCTGCACACGCTCACAGGAGCCATG  
 TCCTTGTACGACGCTGCAGAGTCAATGCCGCCCTGACCATCCAGCTCTTCTCTCAGCTCTTCCACTTCA  
 TCAATATGTGGCTGTTCAATAGATTGGTGACCGACCCAGATTCCGGGGCTGTGCTCCCACTTACTGGGGTGC  
 GATTATCCGTGAGCAGTGGGCCATATTGAAGCCTGGGCTGAGAAGCAGGGGCTGGAAGTGGCTGCGGAC  
 GTGCATCTGAGCAGGATCGTGCAGGCAACGACTTTGCTTACCATGGATAAGTATGCACCTGATGACATTC  
 CAAATATAAACAGCACCTGCTTTAAGTTAAATTCATTACAACCTCAAGCCTTATTACAGAACTATCACTG  
 TGCACCTGATGAGCCTTTTATCCCAACGGATCTTAGAAAAATGTAGTACTGTGGCTGAAAACACTGCC  
 GATGAGCTGGCCCGCAGTGTGAAGGGAAGTGCAGTTGGAGGAGGATCCTGATCTGCAGCTGCCGTTTC  
 TTTTGCCAGAAGATGGTTATTCTTGTGATGTTGTCAGAAACATCCAAATGGTTTACAAGAAATTTTAGA  
 CCCTCTGTGCCAGAGAGGATTTGCAGGTTAATCCTCACACAGTTCACCAGGTAATGGACAATATAT  
 TTTGAAGTGCAGATTATGAAGTCACTTCTGCGTGAGAACACAGAGCTGGCTCAGCCTCTGAGGAAAG  
 AACCTGAAATAACTACTGTGACCTAAAAAGCAGAATGGAATGGGCTTAGCATTGTTGCAGCAAAGGG  
 TGCTGGTCAAGATAAACTAGGAATCTATGTGAAGTCGGTGTGAAAGGAGGTGCTGCAGATGTGGATGGA  
 CGTCTAGCTGCAGGTGATCAGCTCCTCAGTGTGGATGGACGAAGTCTGGTTGGACTCTCTCAGGAAAGGG  
 CGGCAGAACTCATGACAAGAACAAGCTCTGTGGTGAAGTAGCAAGCAGGGTGCATCTACCA  
 CGGTCTGGCCACCCTTCTCAATCAGCCATCCCCATGATGCAGAGAATTCAGATCGTGTGGCTCAGGT  
 AAACCCGACCAAAGAGTGAAGGCTTTGAGCTCTATAATAATTCAACTCAAAATGGGCTCCTGAGAGTC  
 CTCAGTGCCTTGGCAGAAATAGTGAACCAAAGAAATGCCTGGTGTGACAGACTGATGAAAAATAG  
 AGCTGATCACCCTCCAGCCCCAACGTAGCAAATCAGCCTCCTAGTCTGGAGGGAAAAGTGCATATGCC  
 TCTGGAACAACAGCGAAGATAACATCTGTCTCTACTGAAACCTCTGCAGTGGAGCAGACGCCCTCCGC  
 CTAGACCTGAAGCCTACCCATCCCCACTCAGAGTACACCAGAGAGATTTTACCTTCCAGCTTCCAA  
 ATCCCAGGATCGGATGGCTCCTCCTCAGAACCAGTGGCCAAATATGAGGAAAAGCCACATATGCACACA  
 GATAGTAATCATTCCAGTATTGCAATTCAGCGTGTACACGTTCCCAAGAAGAACTTCGAGAAGATAAAG  
 CTTACCAACTTGAGCGGCATCGAATAGAGGCAGCTATGGACCGAAAGTCTGATAGTGATATGTGGATAAA  
 TCAGAGCTCCTCACTGGACTCCAGTACCTTAGCCAGGAGCATCTGAACCATTCTTAAGTCGGTCACC  
 CCTGCTTCCACTGACCAAAAGTGGCCCTGGCCGTTGGAAAACACCAGCAGCCATACCGGCCACCCTG  
 TGGCCGCTCCCAGCCAATCCGAACAGACCTGCCTCCGCCACCCCGCCACCTCCAGTCCACTATGCCGG  
 TGATTTGATGGAATGTCCATGGATTTGCCCTCTCCACCACCCCTTCCGCCAACCCAGATAGGGCTGCCG  
 TCTGCGCAGGTGGCTGCTGCTGAACGGAGAAAGAGAGAAGAACATCAGCGTTGGTATGAGAAGGAGAAGG  
 CCCGCCTGGAGGAGGAGCGGGAGAGGAAGCGGAGAGAGCAGGAGAGGAAGTTGGGCCAGATGCGCACTCA  
 GTCCTTAAACCCTGCTCCGTTTTCTCCCCTGACTGCACAGCAGATGAAGCCCGAAAAGCCTTCCACACTC  
 CAGCGGCCACAGGAAACAGTCAATCGGGAGCTGCAGCCTCAGCAGCAGCCCCGCAGATCGAGCGCAGAG  
 ACTTGCAGTACATTACAGTCAAGAGAGGAGCTTTCTCGGGGACAGTCTGTCCCCGACCCGTTGGAA  
 GCGGGACGCCAAGGAGAAGCTGGAGAAGCAGCAGCAGATGCACATCGTGGACATGCTGAGCAAGGAGATC  
 CAGGAGCTCCAGAGCAAACCGGACCGCAGCGCCGAGGAGAGCAGCGGCTGCGCAAGCTCATGCTGGAGT  
 GGCAGTCCAGAAGAGACTCCAGGAGTCAAGCAGAAGGACGAAGATGACGAGGAGGAGGAGGACGATGA  
 TGTGGACACCATGCTGATCATGCAGCGCTGGAGGCTGAACGAAGAGCGAGGGACGAGGAGCGGAGCGG  
 CAGCAGCAGTTAGAAGAGATGCGCAAGCGGGAAGCGGAAGACCGAGCGAGGAAGAGGAAGAGCGCCGG  
 GGCAGGAGGAGGAGCGAACAACAGGACGCTGAAGAAAAGTTATGGTCCTT

ACGCGTACGCGGCCGCTCGAGCAGAACTCATCTCAGAAGAGGATCTGGCAGCAAATGATATCCTGGATT

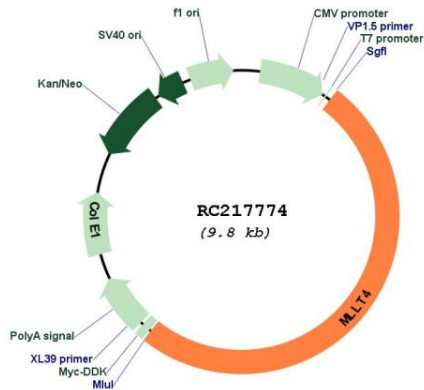


<b>ACCN:</b>	NM_001040000
<b>ORF Size:</b>	4953 bp
<b>OTI Disclaimer:</b>	<p>Due to the inherent nature of this plasmid, standard methods to replicate additional amounts of DNA in E. coli are highly likely to result in mutations and/or rearrangements. Therefore, OriGene does not guarantee the capability to replicate this plasmid DNA. Additional amounts of DNA can be purchased from OriGene with batch-specific, full-sequence verification at a reduced cost. Please contact our customer care team at <a href="mailto:custsupport@origene.com">custsupport@origene.com</a> or by calling 301.340.3188 option 3 for pricing and delivery.</p> <p>The molecular sequence of this clone aligns with the gene accession number as a point of reference only. However, individual transcript sequences of the same gene can differ through naturally occurring variations (e.g. polymorphisms), each with its own valid existence. This clone is substantially in agreement with the reference, but a complete review of all prevailing variants is recommended prior to use. <a href="#">More info</a></p>
<b>OTI Annotation:</b>	This clone was engineered to express the complete ORF with an expression tag. Expression varies depending on the nature of the gene.
<b>Components:</b>	The ORF clone is ion-exchange column purified and shipped in a 2D barcoded Matrix tube containing 10ug of transfection-ready, dried plasmid DNA (reconstitute with 100 ul of water).
<b>Reconstitution Method:</b>	<ol style="list-style-type: none"> <li>1. Centrifuge at 5,000xg for 5min.</li> <li>2. Carefully open the tube and add 100ul of sterile water to dissolve the DNA.</li> <li>3. Close the tube and incubate for 10 minutes at room temperature.</li> <li>4. Briefly vortex the tube and then do a quick spin (less than 5000xg) to concentrate the liquid at the bottom.</li> <li>5. Store the suspended plasmid at -20°C. The DNA is stable for at least one year from date of shipping when stored at -20°C.</li> </ol>
<b>RefSeq:</b>	<a href="#">NM_001040000.3</a>
<b>RefSeq Size:</b>	7629 bp
<b>RefSeq ORF:</b>	4956 bp
<b>Locus ID:</b>	4301
<b>UniProt ID:</b>	<a href="#">P55196</a>
<b>Cytogenetics:</b>	6q27
<b>Protein Families:</b>	Druggable Genome
<b>Protein Pathways:</b>	Adherens junction, Leukocyte transendothelial migration, Tight junction
<b>MW:</b>	187.7 kDa

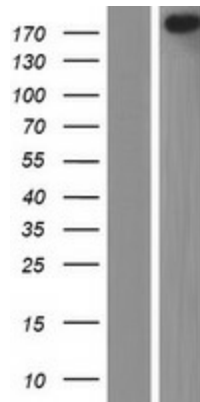
**Gene Summary:**

This gene encodes a multi-domain protein involved in signaling and organization of cell junctions during embryogenesis. It has also been identified as the fusion partner of acute lymphoblastic leukemia (ALL-1) gene, involved in acute myeloid leukemias with t(6;11) (q27;q23) translocation. Alternatively spliced transcript variants encoding different isoforms have been described for this gene, however, not all have been fully characterized.[provided by RefSeq, May 2011]

**Product images:**



Circular map for RC217774



Western blot validation of overexpression lysate (Cat# [LY421870]) using anti-DDK antibody (Cat# [TA50011-100]). Left: Cell lysates from untransfected HEK293T cells; Right: Cell lysates from HEK293T cells transfected with RC217774 using transfection reagent MegaTran 2.0 (Cat# [TT210002]).