

Product datasheet for **RC217772**

CERKL (NM_001030311) Human Tagged ORF Clone

Product data:

Product Type:	Expression Plasmids
Product Name:	CERKL (NM_001030311) Human Tagged ORF Clone
Tag:	Myc-DDK
Symbol:	CERKL
Synonyms:	RP26
Mammalian Cell Selection:	Neomycin
Vector:	pCMV6-Entry (PS100001)
E. coli Selection:	Kanamycin (25 ug/mL)



[View online »](#)

ORF Nucleotide Sequence:

>RC217772 representing NM_001030311
 Red=Cloning site Blue=ORF Green=Tags(s)

TTTTGTAATACGACTCACTATAGGGCGGCCGGGAATTCGTCGACTGGATCCGGTACCGAGGAGATCTGCC
 GCC**GCGATCGCC**

ATGCCCTGGAGGAGCGCAGGAACCGGGTGAAGTCCCTGGAGGGCGGCCGGGAGGAAGAGGCCCCCGG
 AGGCTGCCGCTGTGCCTCCGGCGCTGTTAACGTCCCGCAGCAGACGAGGCGGCCGGCCAGCGGATTCT
 GCTCCGGGGCATCTTTGAGATCGGGAGGACAGTTGTGACGTGGTCTGAGCGAGCGAGCACTGCGGTGG
 CGGCCATTACGCCGAGCGCCCGCGGGTATTCTAAGTATGACTTGCTATGTAAGAAGAATTTATTG
 AACTCAAAGACATATTCTCTGTGAACTGAAACGGCGTTGTTCTGTTAAACAGCAGAGAAGTGGTACTTT
 ATTAGGTATCACACTTTCATCTGCTTGAAAAAGGAACAAAATAAACTAAAGAATTTACACTTGATCTT
 ATTAATTTAAGTGAAGACCACTGTGACATATGGTTTAGACAGTCAAGAAAATATTGGCAGGCTTTCCAA
 ACAGACCGAAGTCATTAATAACTCCTTAACCCCAAAGTCAAAAAAGAAGCTACCCAGGTTTATTA
 TGAGAAGTTGAACCTCTGTTGAAGCTTGCAAGAAATAAACTGATGTAACAATAATGGAATATGAAGGG
 CAGCTCTGTCACTGCTTAAGGAATGTGAACCTCCAGGGATTTGATGGTGGGCATCGGAAACCATTGTTCCG
 CAATACATTGGAGTGTACAGAGATTGTTCACTGGCATGCAAACGTTAGAACCAAGTGTGCTGTGTTGG
 TGGAGATGGATCTGCTAGCGAAGTAGCCATGCTTTGCTTCTGAGAGCTCAGAAGAATGCTGGGATGGAA
 ACAGACCGAATCTGACTCCTGTGAGAGCACAGCTTCCACTTGGCTTAATACCAGCAGGATCTACCAATG
 TATTGGCACATTTCTTTCATGGAGTTCCCTCATGTGATAACTGCAACATTGCACATTATAATGGGGCATGT
 ACAGCTGGTCGACGTCTGCACCTCAGCACCGCTGGCAAGCTTCTCGCTTTGGGTTCTCAGCCATGTTT
 GGCTTTGGTGAAGAACCTTGGCTCTGGCAGAAAATATCGATGGATGTCCTCAACCAACGGAGAGATT
 TTGCTGTTGTTAAGGCACTGGCAAACTAAGGCAGAAGACTGTGAAATATCATTTTTACATTTAACAG
 CTCTGATGATGTGCAAGAAAGGAGGGCACAGGGATCTCCCAAATCTGACTGTAATGATCAATGGCAAATG
 ATCCAGGGTCAGTTCTTGAATGTGAGCATTATGGCAATTCCTTGCCTGTGTTCACTGGCACCTAGAGGCT
 TGGCACCTAATACCAGATTAATAATGGAAGTATGGCTCTTATAATTGCCGAAACACTTCTCGCCAGA
 ATTTATAAAACACCTGAAAAGATATGCCAGTGTAAAAAATCAGTTCAATTTTCCATTTGTTGAGACTTAC
 ACTGTTGAGGAAGTAAAAGTTCATCCAAGGAATAATACTGGTGGATATAATCCAGAGGAGGAGGAGGATG
 AAAGTCTTCAGAAAATGTTTCCCTTGAATGTAGATGGTATTAAATGGAAGTGCATCAGAGGTCCA
 TATTAGATTGCATCCAAGACTTATCAGTCTTTATGGAGGAAGCATGGAAGAAATGATTCCAAAG

ACGCGTACGCGGCCGCTCGAGCAGAACTCATCTCAGAAGAGGATCTGGCAGCAAATGATATCCTGGATT
 ACAAGGATGACGACGATAAGGTTTAA

Protein Sequence:

>RC217772 representing NM_001030311
 Red=Cloning site Green=Tags(s)

MPWRRRRNRVSALEGGREEEAPPEAAAVPPALLTSPQQTEAAAERILLRIGIFEIGRDCSDVVLSEALRW
 RPIQPERPAGDSKYDLLCKEEFIELKIDIFSVKLRRCRSVKQQRSGTLLGITLFICLKKEQNKLNSTLDL
 INLSEHCDIWRQFKKILAGFPNRPKSLKILLNPQSHKKEATQVYVEKVEPLLKLAGIKTDVTIMEYEG
 HALSLLKECELQGFDDGHRKPLFAIHWSVQRLFTGMQTLPSVVCVGGDSASEVAHALLRAQKNAGME
 TDRILTPVRAQLPLGLIPAGSTNVLAHSLHGVPVHITATLHIIMGHVQLVDVCTFSTAGKLLRFGFSAMF
 GFGGRTLALAEKYRWMSPNQRRDFAVVKALAKLKAEDCEISFLPFNSDDVQERRAQSPKSDCNDQWQM
 IQGQFLNVSIMAIPLCLSVAPRGLAPNTRLNNGSMALIIARNTSRPEFIKHLKRYASVKNQFNPFVETY
 TVEEVKVHPRNNTGGYNPEEEDETAENCFWNVDGDLMEVASEVHIRLHPRLISLYGGSMEEMIPK

TRTRPLEQKLISEEDLAANDILDYKDDDDKV

Chromatograms:

https://cdn.origene.com/chromatograms/mk6124_e08.zip

Restriction Sites:

Sgfl-MluI

Cloning Scheme:


ACCN: NM_001030311

ORF Size: 1674 bp

OTI Disclaimer: The molecular sequence of this clone aligns with the gene accession number as a point of reference only. However, individual transcript sequences of the same gene can differ through naturally occurring variations (e.g. polymorphisms), each with its own valid existence. This clone is substantially in agreement with the reference, but a complete review of all prevailing variants is recommended prior to use. [More info](#)

OTI Annotation: This clone was engineered to express the complete ORF with an expression tag. Expression varies depending on the nature of the gene.

Components: The ORF clone is ion-exchange column purified and shipped in a 2D barcoded Matrix tube containing 10ug of transfection-ready, dried plasmid DNA (reconstitute with 100 ul of water).

- Reconstitution Method:**
1. Centrifuge at 5,000xg for 5min.
 2. Carefully open the tube and add 100ul of sterile water to dissolve the DNA.
 3. Close the tube and incubate for 10 minutes at room temperature.
 4. Briefly vortex the tube and then do a quick spin (less than 5000xg) to concentrate the liquid at the bottom.
 5. Store the suspended plasmid at -20°C. The DNA is stable for at least one year from date of shipping when stored at -20°C.

RefSeq: [NM_001030311.2](#)

RefSeq Size: 1677 bp

RefSeq ORF: 1677 bp

Locus ID: 375298

UniProt ID: [Q49MI3](#)

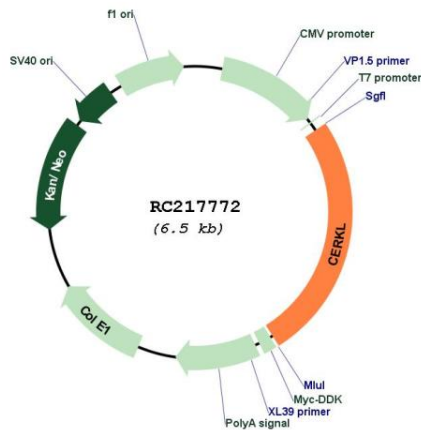
Cytogenetics: 2q31.3

Protein Families: Druggable Genome

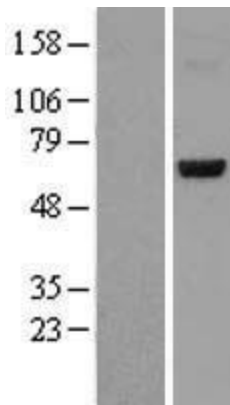
MW: 62.4 kDa

Gene Summary: This gene was initially identified as a locus (RP26) associated with an autosomal recessive form of retinitis pigmentosa (arRP) disease. This gene encodes a protein with ceramide kinase-like domains, however, the protein does not phosphorylate ceramide and its target substrate is currently unknown. This protein may be a negative regulator of apoptosis in photoreceptor cells. Mutations in this gene cause a form of retinitis pigmentosa characterized by autosomal recessive cone and rod dystrophy (arCRD). Alternative splicing of this gene results in multiple transcript variants encoding different isoforms and non-coding transcripts. [provided by RefSeq, May 2010]

Product images:



Circular map for RC217772



Western blot validation of overexpression lysate (Cat# [LY400410]) using anti-DDK antibody (Cat# [TA50011-100]). Left: Cell lysates from untransfected HEK293T cells; Right: Cell lysates from HEK293T cells transfected with RC217772 using transfection reagent MegaTran 2.0 (Cat# [TT210002]).