

Product datasheet for **RC217758**

CCDC69 (NM_015621) Human Tagged ORF Clone

Product data:

| | |
|---------------------------|---|
| Product Type: | Expression Plasmids |
| Product Name: | CCDC69 (NM_015621) Human Tagged ORF Clone |
| Tag: | Myc-DDK |
| Symbol: | CCDC69 |
| Mammalian Cell Selection: | Neomycin |
| Vector: | pCMV6-Entry (PS100001) |
| E. coli Selection: | Kanamycin (25 ug/mL) |
| ORF Nucleotide Sequence: | >RC217758 representing NM_015621 Red=Cloning site Blue=ORF Green=Tags(s) |

TTTTGTAATACGACTCACTATAGGGCGGCCGGAATTCGTCGACTGGATCCGGTACCGAGGAGATCTGCC
GCC**CGATCGCC**

ATGGGCTGCAGACACAGCAGGCTGAGCAGCTGCAAACCCCGAAAAAGAAGCGCCAAGAACCAGAACCAG
AACAGCCACCCAGACCAGAGCCCATGAATTAGGTCCCCTCAATGGGGACACAGCTATAACTGTCCAGCT
CTGTGCATCAGAGGAGGCTGAGCGGCACCAGAAGGATATAACCAGAATTCTCCAGCAACATGAGGAGGAA
AAGAAGAAATGGGCACAACAGGTGGAGAAGGAAAGGGAGCTAGAGCTTCGAGACAGACTGGATGAGCAGC
AAAGGGTCCTGGAAGGAAAGAATGAAGAGGCCCTGCAAGTCCTCCGGGCCTCATATGAACAGGAGAAAGA
AGCGCTTACCCACTCTTTCCGGGAGGCCAGTTCTACCCAGCAGGAGACCATAGACAGACTGACCTCACAG
CTGGAGGCTTTCCAGGCCAAAATGAAGAGGGTGGAGGAGTCCATTCTGAGCCGAACTATAAGAAACATA
TCCAGGATTATGGGAGCCCCAGCCAGTTCTGGGAGCAGGAGCTGGAGAGCTTACACTTTGTATCGAGAT
GAAGAATGAGCGTATTATGAGCTGGACAGGCGGCTGATCCTCATGGAAACAGTGAAGAGAAAAATCTG
ATATTGGAGGAAAAAATTACGACCCTGCAACAGGAAAAATGAGGACCTCCATGTCCGAAGCCGCAACCAGG
TGGTCCTGTCAAGGCAGCTGTGAGAAGACCTGCTTCTCACGCGTGAGGCCCTGGAGAAGGAGGTGCAGCT
GCGGCGACAGCTCCAGCAGGAGAAGGAGGAGCTGTTGTACCGGGTCTTGGGGCCAATGCCTGCCTGCC
TTCCCTCTGGCCCTGTCACTCCCACTGAGGTCTCTTTCTCGCCACA

AG**CGGACCG**ACGCGTACGCGGCCGCTCGAGCAGAACTCATCTCAGAAGAGGATCTGGCAGCAAATGATATCC
TGGATTACAAGGATGACGACGATAAGGTTAA



[View online »](#)

Protein Sequence: >RC217758 representing NM_015621
 Red=Cloning site Green=Tags(s)

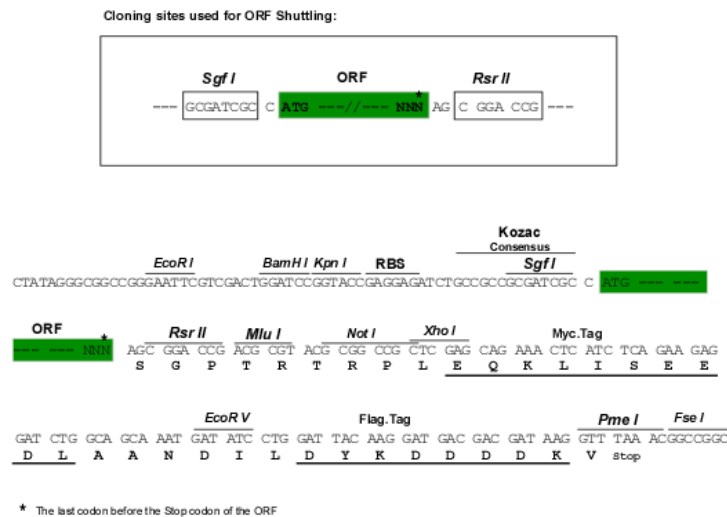
MGCRHSRLSSCKPPKKRQEPEPEQPPRPEPHELGPLNGDTAIVQLCASEEAERHQKDITRILQQHEEE
 KKKWAQQVEKERELRLDRLDEQQRVLEGKNEEALQVLRASYEQEKEALTHSFREASSTQQETIDRLTSQ
 LEAFQAKMKRVEESILSRNYKKHIQDYGSPSQFWEQELESLHFVIEMKNERIHELDRRLILMETVKEKNL
 ILEEKITTLQQENEDLHVRSRNQVLSRQLSEDLTLTREALEKEVQLRRQLQQEKEELLYRVLGANASPA
 FPLAPVTPTEVSFLAT

SGPTRTRRLEQKLISEEDLAANDILDYKDDDDKV

Chromatograms: https://cdn.origene.com/chromatograms/mk8016_d02.zip

Restriction Sites: SgfI-RsrII

Cloning Scheme:



ACCN: NM_015621

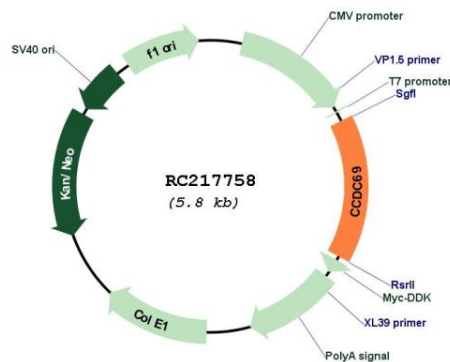
ORF Size: 888 bp

OTI Disclaimer: Due to the inherent nature of this plasmid, standard methods to replicate additional amounts of DNA in E. coli are highly likely to result in mutations and/or rearrangements. Therefore, OriGene does not guarantee the capability to replicate this plasmid DNA. Additional amounts of DNA can be purchased from OriGene with batch-specific, full-sequence verification at a reduced cost. Please contact our customer care team at custsupport@origene.com or by calling 301.340.3188 option 3 for pricing and delivery.

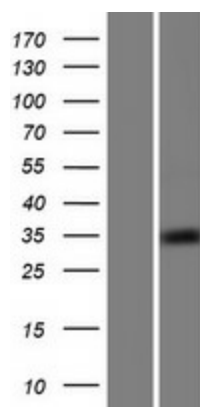
The molecular sequence of this clone aligns with the gene accession number as a point of reference only. However, individual transcript sequences of the same gene can differ through naturally occurring variations (e.g. polymorphisms), each with its own valid existence. This clone is substantially in agreement with the reference, but a complete review of all prevailing variants is recommended prior to use. [More info](#)

| | |
|-------------------------------|---|
| OTI Annotation: | This clone was engineered to express the complete ORF with an expression tag. Expression varies depending on the nature of the gene. |
| Components: | The ORF clone is ion-exchange column purified and shipped in a 2D barcoded Matrix tube containing 10ug of transfection-ready, dried plasmid DNA (reconstitute with 100 ul of water). |
| Reconstitution Method: | <ol style="list-style-type: none"> 1. Centrifuge at 5,000xg for 5min. 2. Carefully open the tube and add 100ul of sterile water to dissolve the DNA. 3. Close the tube and incubate for 10 minutes at room temperature. 4. Briefly vortex the tube and then do a quick spin (less than 5000xg) to concentrate the liquid at the bottom. 5. Store the suspended plasmid at -20°C. The DNA is stable for at least one year from date of shipping when stored at -20°C. |
| Note: | Plasmids are not sterile. For experiments where strict sterility is required, filtration with 0.22um filter is required. |
| RefSeq: | NM_015621.3 |
| RefSeq Size: | 3416 bp |
| RefSeq ORF: | 891 bp |
| Locus ID: | 26112 |
| UniProt ID: | A6NI79 |
| Cytogenetics: | 5q33.1 |
| MW: | 34.6 kDa |
| Gene Summary: | May act as a scaffold to regulate the recruitment and assembly of spindle midzone components. Required for the localization of AURKB and PLK1 to the spindle midzone. [UniProtKB/Swiss-Prot Function] |

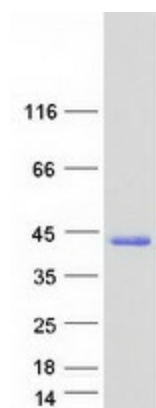
Product images:



Circular map for RC217758



Western blot validation of overexpression lysate (Cat# [LY414459]) using anti-DDK antibody (Cat# [TA50011-100]). Left: Cell lysates from untransfected HEK293T cells; Right: Cell lysates from HEK293T cells transfected with RC217758 using transfection reagent MegaTran 2.0 (Cat# [TT210002]).



Coomassie blue staining of purified CCDC69 protein (Cat# [TP317758]). The protein was produced from HEK293T cells transfected with CCDC69 cDNA clone (Cat# RC217758) using MegaTran 2.0 (Cat# [TT210002]).