

Product datasheet for **RC217756**

BRAP (NM_006768) Human Tagged ORF Clone

Product data:

Product Type:	Expression Plasmids
Product Name:	BRAP (NM_006768) Human Tagged ORF Clone
Tag:	Myc-DDK
Symbol:	BRAP
Synonyms:	BRAP2; IMP; RNF52
Mammalian Cell Selection:	Neomycin
Vector:	pCMV6-Entry (PS100001)
E. coli Selection:	Kanamycin (25 ug/mL)



[View online »](#)

ORF Nucleotide Sequence:

>RC217756 representing NM_006768
 Red=Cloning site Blue=ORF Green=Tags(s)

TTTTGTAATACGACTCACTATAGGGCGGCCGGAATTCGTCGACTGGATCCGGTACCGAGGAGATCTGCC
 GCC**CGGATCGCC**

ATGAGTGTGCTACTGTTGTTATCCGATTGGAGCTCGCGAACACTCGCCTGTCCCCGCCGGCTTCGGCT
 TCAGCGCCGCGGCCGGGAAATGTCTGATGAGGAGATAAAAAAGACGACACTAGCCTCAGCTGTAGCCTG
 TTTAGAAGGCAAGTCACCAGGAGAGAAAGTAGCGATTATCCATCAGCATCTCGGCCGTCGAGAAATGACA
 GATGTGATCATTGAGACCATGAAGTCCAACCCAGATGAACTAAAACTACAGTGGAGAAAGGAAGTCTT
 CAGAAGCCTCCCCACTGCGCAAAGAAGTAAAGATCACAGTAAGGAATGCATAAACGCTGCCCCAGATTC
 TCCGTCCAAACAGCTTCCAGACCAGATTCATTCTTCAGTGAAATCCATCAGTTGAAATAGTTCATGGT
 ATTATGCACCTATATAAGACAAAATAAGATGACCTCCTAAAAGAAGATGTGCGGCGCAGTGCCATGCTGT
 GTATTCTCACAGTCCCTGCTGCAATGACCAGTCATGACCTTATGAAGTTTGTGCCCATTTAACGAAGT
 AATTGAACAAATGAAAATTATCAGAGACTCTACCCAACCAATATATGGTGCTGATAAAGTTTCGTGCA
 CAGGCTGATGCGGATAGTTTTATATGACATGCAATGGCCGCGAGTTCAACTCAATAGAAGATGACGTTT
 GCCAGCTAGTGTATGTGGAAAGAGCTGAAGTGCTCAAATCTGAAGATGGCGCCAGCTCCAGTGATGGA
 CCTGACTGAACTCCCAAGTGCACGGTGTGTCTGGAGCGCATGGACGAGTCTGTGAATGGCATCCTCACA
 ACGTTATGTAACCACAGCTTCCACAGCCAGTGTCTACAGCGCTGGGACGATACCAGTGTCTGTTTGGC
 GGTACTGTCAAACGCCGAGCCAGTAGAAGAAAATAAGTGTTTTGTAGTGTGGTGTTCAGGAAAATCTTTG
 GATTTGTTAATATGCGGCCACATAGGATGTGGACGGTATGTGAGTGTGGTGTTCAGGAAAATCTTTG
 GAAACGACACACGATGCCATGCAGCTTACCAACCATCGAGTCTGGGACTATGCTGGAGATAACTATG
 TTCATCGACTGGTTGCAAGTAAAACAGATGGAATAAATAGTACAGTATGAATGTGAGGGGATACTGCCA
 GGAAGAGAAAATAGATGCCCTTACAGTTAGAGTATTCATATTTACTAACAAGCCAGCTGGAATCTCAGCGA
 ATCTACTGGGAAAACAAGATAGTTCGGATAGAGAAGGACACAGCAGAGGAAATTAACAACATGAAGACCA
 AGTTTAAAGAAAATGAGAAGTGTGATAATCTAGAGCACAACTAAATGATCTCCTAAAAGAAAAGCA
 GTCTGTGGAAAGAAAGTGCAGTAAACACAAAAGTGGCAAAACCTACCAACGAGCTCAAAGAGGAG
 CAGGAAATGAACAAGTGTTCGAGCAACCAAGTCTCCTGCAGAACAGCTAAAAGAGGAGGAGAGGG
 TGCTGAAGGAGACCTGTGACCAAAAAGATCTGCAGATCACCGAGATCCAGGAGCAGCTGCGTGACGTCAT
 GTTCTACCTGGAGACACAGCAGAAGATCAACCATCTGCCTGCCGAGACCCGCGAGGAAATCCAGGAGGGA
 CAGATCAACATCGCCATGGCCTCGGCTCGAGCCCTGCCTCTTCGGGGGCGAGTGGGAAGTTGCCCTCCA
 GGAAGGGCCGACGAAGAGGGGCAAG

ACGCGTACGCGGCCGCTCGAGCAGAAACTCATCTCAGAAGAGGATCTGGCAGCAAATGATATCCTGGATT
 ACAAGGATGACGACGATAAGGTTTAA

Protein Sequence:

>RC217756 representing NM_006768
 Red=Cloning site Green=Tags(s)

MSVSLVVIRLELAEHSPVPAGFGFSAAGEMSDEEIKKTTLASAVACLEGKSPGEKVAIHQHLGRREMT
 DVIETMKNPDELKTTVEERKSSSEASPTAQRSKDHSKECINAAPDSPSKQLPDQISFFSGNPSVEIVHG
 IMHLYKTNKMTSLKEDVRRSAMLCLTVPAAAMTSHDLMKVFVAPFNEVIEQMKIIRDSTPNQYMLIKFRA
 QADADSFYMTNCRQFNSEDDVCQLVYVERAEVLKSEDGASLPVMDL TELPKCTVCLERMDES VNGILT
 TLCNHSFHSQCLQRWDDTTPVCRYCQTPEPVEENKCFECGVQENLWICL ICGHIGCGRYVSRHAYKHFE
 ETQHTYAMQLTNRVWDYAGDNYVHRLVASKTDGKIVQYCEGDTQCEEKIDALQLEYSYLLTSQLESQR
 IYWENKIVRIEKDTAEEINNMKTKFKETIEKCDNLEHKLNDLLKEKQSVKCTQLNTKVAKLTNELKEE
 QEMNKCLRANQVLLQNKLKEEERVLKETCDQKDLQITEIQEQLRDMFYLETQKINHLPAETRQEIQEG
 QINIAMASASSPASSGSGKLP SRKGRSKRGK

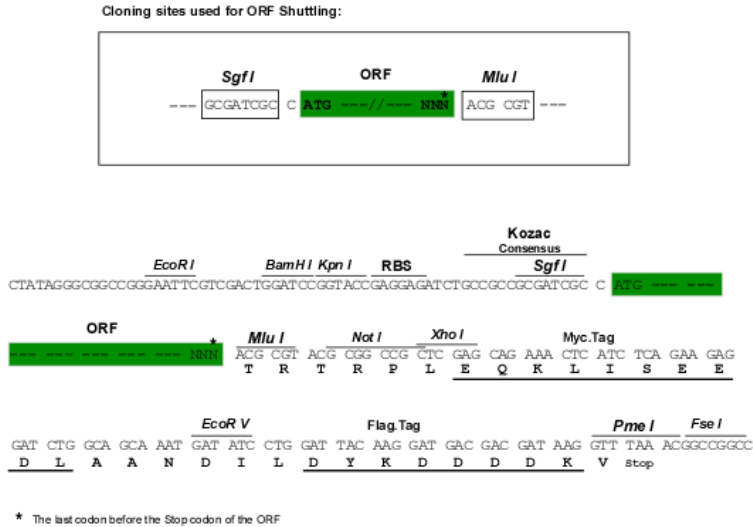
TRTRPLEQKLISEEDLAANDILDYKDDDDKV

Chromatograms:

https://cdn.origene.com/chromatograms/mk6160_a06.zip

Restriction Sites: SgfI-MluI

Cloning Scheme:



ACCN: NM_006768

ORF Size: 1776 bp

OTI Disclaimer: The molecular sequence of this clone aligns with the gene accession number as a point of reference only. However, individual transcript sequences of the same gene can differ through naturally occurring variations (e.g. polymorphisms), each with its own valid existence. This clone is substantially in agreement with the reference, but a complete review of all prevailing variants is recommended prior to use. [More info](#)

OTI Annotation: This clone was engineered to express the complete ORF with an expression tag. Expression varies depending on the nature of the gene.

Components: The ORF clone is ion-exchange column purified and shipped in a 2D barcoded Matrix tube containing 10ug of transfection-ready, dried plasmid DNA (reconstitute with 100 ul of water).

Reconstitution Method:

1. Centrifuge at 5,000xg for 5min.
2. Carefully open the tube and add 100ul of sterile water to dissolve the DNA.
3. Close the tube and incubate for 10 minutes at room temperature.
4. Briefly vortex the tube and then do a quick spin (less than 5000xg) to concentrate the liquid at the bottom.
5. Store the suspended plasmid at -20°C. The DNA is stable for at least one year from date of shipping when stored at -20°C.

Note: Plasmids are not sterile. For experiments where strict sterility is required, filtration with 0.22um filter is required.

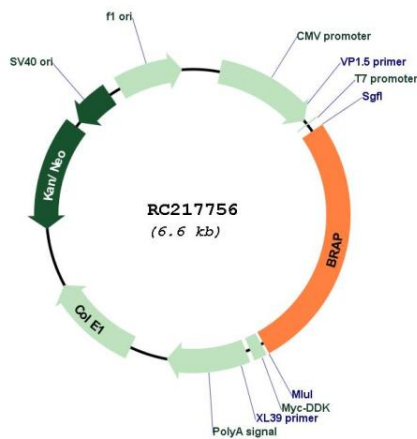
RefSeq: [NM_006768.5](#)

RefSeq Size: 2063 bp

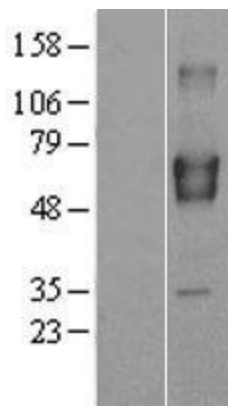
RefSeq ORF: 1779 bp

Locus ID: 8315
UniProt ID: [Q7Z569](#)
Cytogenetics: 12q24.12
Protein Families: Druggable Genome
MW: 67.1 kDa
Gene Summary: The protein encoded by this gene was identified by its ability to bind to the nuclear localization signal of BRCA1 and other proteins. It is a cytoplasmic protein which may regulate nuclear targeting by retaining proteins with a nuclear localization signal in the cytoplasm. [provided by RefSeq, Jul 2008]

Product images:



Circular map for RC217756



Western blot validation of overexpression lysate (Cat# [LY402023]) using anti-DDK antibody (Cat# [TA50011-100]). Left: Cell lysates from untransfected HEK293T cells; Right: Cell lysates from HEK293T cells transfected with RC217756 using transfection reagent MegaTran 2.0 (Cat# [TT210002]).