

## Product datasheet for RC217742

### PBX4 (NM\_025245) Human Tagged ORF Clone

#### Product data:

Product Type:	Expression Plasmids
Product Name:	PBX4 (NM_025245) Human Tagged ORF Clone
Tag:	Myc-DDK
Symbol:	PBX4
Mammalian Cell Selection:	Neomycin
Vector:	pCMV6-Entry (PS100001)
E. coli Selection:	Kanamycin (25 ug/mL)
ORF Nucleotide Sequence:	>RC217742 representing NM_025245 Red=Cloning site Blue=ORF Green=Tags(s)

TTTTGTAATACGACTCACTATAGGGCGGCCGGAATTCGTCGACTGGATCCGGTACCGAGGAGATCTGCCGCCCGATCGCC

ATGGCCGCCCCGCGCCCGCCGCGCCATCGCCCCCGCCCCGCGGCCTCGACACGAGCGACGTCTGCGCAGATCATGGCCATCACCGACCAGAGCCTGGACGAGGCACAGGCCAGAAAGCATGCTCTGAATTGCCATCGGATGAAGCCTGCTCTGTTACGCGTGTCTGTGAGATCAAGGAAAAGACAGTGGTAAGCATCCGTGGCATTCAAGACGAAGATCCCCCTGACGCCAGCTCCTGAGGCTGGATAACATGCTGCTGGCTGAGGGCGTGTGCAGGCCGAGAAGAGAGGAAGAGGAGGAGCGGTGGCCAGGGCCGACAGCAACACAGGTGGCTGTCCAAATGACAATAGCATTGAGCACTCTGACTACAGGGCCAAGCTGTCCAGATCCGACAGATTTACCACTCTGAGCTAGAGAAATATGAACAGGCCTGTCGTGAGTTCACCACGCACGTACCAACCTCCTCCAGGAGCAGAGCAGGATGAGGCCTGTCTCCCCTAAGGAGATTGAGCGCATGGTCGGCGCCATTACCGCAAGTTCAGCGCATCCAGATGCAGTTGAAGCAGAGCACCTGTGAGGCAGTGATGACCCTGCGTTGCGGGCTGCTCGATGCCAGGCGCAAGCGCGGAATTTAGCAAGCAGGCGACGGAAGTGCTGAATGAGTATTTTTACTCCCATCTGACAACCTTACCCAGCGAAGAAGCCAAAGAAGAGCTGGCCAGGAAGGGCGCCTCACCATCTCCAGGTCTCTAACTGGTTTGGCAACAAAAGAAATCCGGTATAAAAAGAACATGGGGAAGTTTCAAGAAGAGGCTACATTTACACGGGTAAAACGGCTGTGGATACCACGGAAGTTGGGGTCCCAGGGAACACGCCAGCTGCCTGTCAACACCTAGCTCCGGCTCCTCTGGACCCTTCCGCTGCCAGCGCTGGGAGCGCCTTCTCACCCTGCGGACTCTGGCCTCTCTCCAGCCTCCTCTGGGGAGGCTGCTGCAGTCCCAGGCCAGGGTAGCTGGCAGGGGCCACCCCCAACCTGCAACTGCCTCACCTGCTGGAGACCCTGGCAGCATCAACTCCAGTACATCTAAT

ACGCGTACGCGGCCGCTCGAGCAGAACTCATCTCAGAAGAGGATCTGGCAGCAATGATATCCTGGATTACAAGGATGACGACGATAAGGTTTAA



[View online »](#)

**Protein Sequence:** >RC217742 representing NM\_025245  
Red=Cloning site Green=Tags(s)

MAAPRRPAPSPAPRRDLTSDVLQQIMAITDQSLDEAQARKHALNCHRMKPAFVSVLCEIKEKTVVSIRG  
 IQDEDPDAQLLRLDNMLLAEGVCRPEKRGRGGAVARAGTATPGGCPNDNSIEHSDYRAKLSQIRQIYHS  
 ELEKYEQACREFTHVTNLLQEQRMRPVSPKEIERMVGAIHGKFSAIQMQLKQSTCEAVMTLRSRLDA  
 RRKRRNFSKQATEVLENYFYSHLNNPYPSEEAKEELARKGGLTISQVSNWFGNKIRIRYKKNMGKFQEEAT  
 IYTGKTAVDTTVEVGPVGNHASCLSTPSSGSSGPFPLPSAGDAFLRLTLASLQPPPGGCLQSQAQGSWQ  
 GATPQPATASPAGDPGSINSSTSN

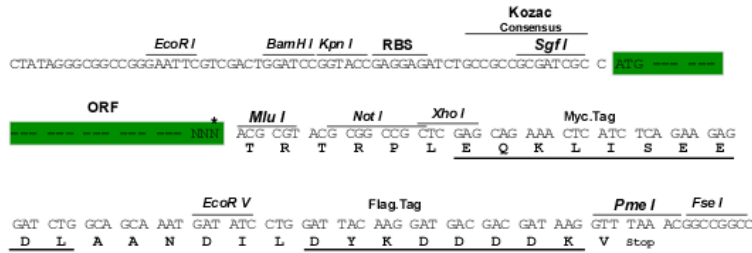
TRTRPLEQKLISEEDLAANDILDYKDDDDKV

**Chromatograms:** [https://cdn.origene.com/chromatograms/mg3959\\_b01.zip](https://cdn.origene.com/chromatograms/mg3959_b01.zip)

**Restriction Sites:** Sgfl-MluI

**Cloning Scheme:**

Cloning sites used for ORF Shuttling:



\* The last codon before the Stop codon of the ORF

**ACCN:** NM\_025245

**ORF Size:** 1122 bp

**OTI Disclaimer:** The molecular sequence of this clone aligns with the gene accession number as a point of reference only. However, individual transcript sequences of the same gene can differ through naturally occurring variations (e.g. polymorphisms), each with its own valid existence. This clone is substantially in agreement with the reference, but a complete review of all prevailing variants is recommended prior to use. [More info](#)

**OTI Annotation:** This clone was engineered to express the complete ORF with an expression tag. Expression varies depending on the nature of the gene.

**Components:** The ORF clone is ion-exchange column purified and shipped in a 2D barcoded Matrix tube containing 10ug of transfection-ready, dried plasmid DNA (reconstitute with 100 ul of water).

**Reconstitution Method:**

1. Centrifuge at 5,000xg for 5min.
2. Carefully open the tube and add 100ul of sterile water to dissolve the DNA.
3. Close the tube and incubate for 10 minutes at room temperature.
4. Briefly vortex the tube and then do a quick spin (less than 5000xg) to concentrate the liquid at the bottom.
5. Store the suspended plasmid at -20°C. The DNA is stable for at least one year from date of shipping when stored at -20°C.

**Note:** Plasmids are not sterile. For experiments where strict sterility is required, filtration with 0.22um filter is required.

**RefSeq:** [NM\\_025245.3](#)

**RefSeq Size:** 1443 bp

**RefSeq ORF:** 1125 bp

**Locus ID:** 80714

**UniProt ID:** [Q9BYU1](#)

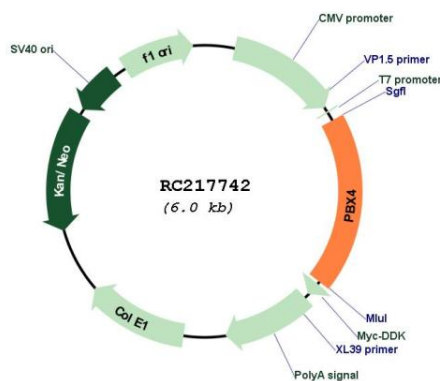
**Cytogenetics:** 19p13.11

**Protein Families:** Transcription Factors

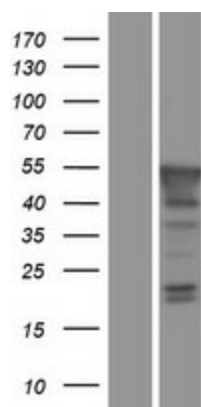
**MW:** 40.7 kDa

**Gene Summary:** This gene encodes a member of the pre-B cell leukemia transcription factor family. These proteins are homeobox proteins that play critical roles in embryonic development and cellular differentiation both as Hox cofactors and through Hox-independent pathways. The encoded protein contains a homeobox DNA-binding domain, but specific functions of the protein have not been determined. Alternatively spliced transcript variants have been observed for this gene. [provided by RefSeq, May 2011]

### Product images:



Circular map for RC217742



Western blot validation of overexpression lysate (Cat# [LY410807]) using anti-DDK antibody (Cat# [TA50011-100]). Left: Cell lysates from untransfected HEK293T cells; Right: Cell lysates from HEK293T cells transfected with RC217742 using transfection reagent MegaTran 2.0 (Cat# [TT210002]).