

Product datasheet for RC217732

ARMCX3 (NM_177947) Human Tagged ORF Clone

Product data:

Product Type:	Expression Plasmids
Product Name:	ARMCX3 (NM_177947) Human Tagged ORF Clone
Tag:	Myc-DDK
Symbol:	ARMCX3
Synonyms:	ALEX3; dj545K15.2; GASP6
Mammalian Cell Selection:	Neomycin
Vector:	pCMV6-Entry (PS100001)
E. coli Selection:	Kanamycin (25 ug/mL)
ORF Nucleotide Sequence:	>RC217732 ORF sequence Red=Cloning site Blue=ORF Green=Tags(s)

TTTTGTAATACGACTCACTATAGGGCGGCCGGAATTCGTCGACTGGATCCGGTACCGAGGAGATCTGCC
GCC**CGATCGCC**

ATGGGCTACGCCAGGAAAGTAGGCTGGGTGACCGCAGGCCTGGTATTGGGGCTGGCGCCTGCTATTGCA
TTTATAGACTGACTAGGGGAAGAAAACAGAACAAGGAAAAATGGCTGAGGGTGGATCTGGGGATGTGGA
TGATGCTGGGGACTGTTCTGGGGCCAGGTATAATGACTGGTCTGATGATGATGACAGCAATGAGAGC
AAGAGTATAGTATGGTACCCACCTTGGGCTCGGATTGGGACTGAAGCTGGAACCAGAGCTAGGGCCAGGG
CAAGGGCCAGGGCTACCCGGGCAGTCCGGCTGTCCAGAAACGGGCTTCCCCAATTCAGATGATACCGT
TTTGTCGCCCTCAAGAGCTACAAAAGTTCTTTGCTTGGTTGAGATGTCTGAAAAGCCTTATATTCTTGAA
GCAGCTTTAATTGCTCTGGGTAACAATGCTGCTTATGCATTTAACAGAGATATTATTCGTGATCTGGGTG
GTCTCCCAATTGTGCAAAAGATTCTCAATACTCGGGATCCCATAGTTAAGGAAAAGGCTTTAATTGTCT
GAATAACTTGAGTGTGAATGCTGAAAAACAGCGCAGGCCTAAAGTATACATGAATCAAGTGTGTGATGAC
ACAATCACTTCTCGTTGAACTCATCTGTGCAGCTTGTGGACTGAGATTGCTTACAAATATGACTGTTA
CTAATGAGTATCAGCACATGCTTGCTAATTCCATTTCTGACTTTTTTCGTTTATTTTCAGCGGGAATGA
AGAAACCAAACTCAGGTTCTGAAACTCCTTTTGAATTTGGCTGAAAATCCAGCCATGACTAGGGAAGTCT
CTCAGGGCCCAAGTACCATCTTCACTGGGCTCCCTCTTTAATAAGAGGAGAACAAGAAGTTATTCTTA
AACTTCTGGTCATATTTGAGAACATAAATGATAATTTCAAATGGGAAGAAAATGAACCTACTCAGAAATCA
ATTCGGTGAAGGTTCACTTTTTTCTTTTTAAAAGAATTTCAAGTGTGTGCTGATAAGGTTCTGGGAATA
GAAAGTACCATGATTTTTTGGTAAAAGTAAAAGTTGGAAAATTCATGGCCAACTTGTGAACATATGT
TCCCAAAGAGCCAGGAA

ACGCGTACGCGGCCGCTCGAGCAGAAACTCATCTCAGAAGAGGATCTGGCAGCAATGATATCTGGATT
ACAAGGATGACGACGATAAGGTTTAA



[View online »](#)

Protein Sequence: >RC217732 protein sequence
Red=Cloning site Green=Tags(s)

MGYARKVGVWVTAGLVIGAGACYCIYRL TRGRKQNKKEKMAEGGSGDVDDAGDCSGARYNDWSDDDDDSNES
 KSIWVYPPWARIGTEAGTRARARARARARARRAVQKRASPNSSDVTLSPELQKVLCLVEMSEKPYILE
 AALIALGNAAAYAFNRDIIRDLGGLPIVAKILNTRDPIVKEKALIVLNNLSVNAENQRRLKVYMNQVCD
 TITSRNLNSSVQLAGLRLLTNMTVTNEYQHMLANSISDFRFLFSAGNEETKLQVLKLLNLNLAENPAMTREL
 LRAQVPSSLGSLFNKKNKEVILKLLVIFENINDNFKWEENEPTQNQFEGESLFFFLKEFQVCADKVLGI
 ESHHDFLVKVKVGKFMAKLAEHMFPKSQE

TRTRPLEQKLISEEDLAANDILDYKDDDDKV

Chromatograms: https://cdn.origene.com/chromatograms/mk6416_c04.zip

Restriction Sites: SgfI-MluI

Cloning Scheme:



* The last codon before the Stop codon of the ORF

ACCN: NM_177947

ORF Size: 1137 bp

OTI Disclaimer: The molecular sequence of this clone aligns with the gene accession number as a point of reference only. However, individual transcript sequences of the same gene can differ through naturally occurring variations (e.g. polymorphisms), each with its own valid existence. This clone is substantially in agreement with the reference, but a complete review of all prevailing variants is recommended prior to use. [More info](#)

OTI Annotation: This clone was engineered to express the complete ORF with an expression tag. Expression varies depending on the nature of the gene.

Components: The ORF clone is ion-exchange column purified and shipped in a 2D barcoded Matrix tube containing 10ug of transfection-ready, dried plasmid DNA (reconstitute with 100 ul of water).

Reconstitution Method:

1. Centrifuge at 5,000xg for 5min.
2. Carefully open the tube and add 100ul of sterile water to dissolve the DNA.
3. Close the tube and incubate for 10 minutes at room temperature.
4. Briefly vortex the tube and then do a quick spin (less than 5000xg) to concentrate the liquid at the bottom.
5. Store the suspended plasmid at -20°C. The DNA is stable for at least one year from date of shipping when stored at -20°C.

RefSeq: [NM_177947.3](#)

RefSeq Size: 3367 bp

RefSeq ORF: 1140 bp

Locus ID: 51566

UniProt ID: [Q9UH62](#)

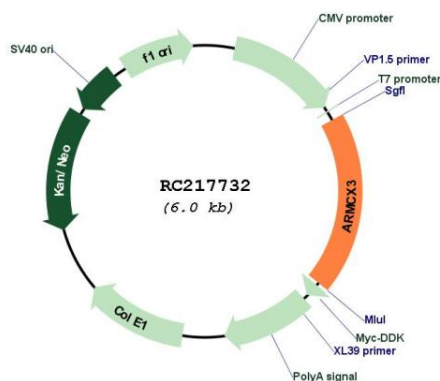
Cytogenetics: Xq22.1

Protein Families: Transmembrane

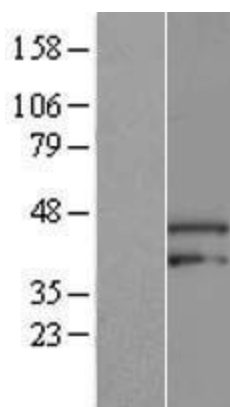
MW: 42.5 kDa

Gene Summary: This gene encodes a member of the ALEX family of proteins which may play a role in tumor suppression. The encoded protein contains a potential N-terminal transmembrane domain and a single Armadillo (arm) repeat. Other proteins containing the arm repeat are involved in development, maintenance of tissue integrity, and tumorigenesis. This gene is closely localized with other family members on the X chromosome. Three transcript variants encoding the same protein have been identified for this gene. [provided by RefSeq, Jul 2008]

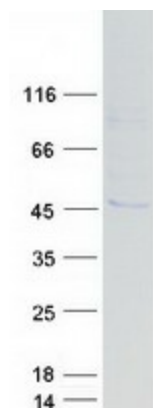
Product images:



Circular map for RC217732



Western blot validation of overexpression lysate (Cat# [LY413862]) using anti-DDK antibody (Cat# [TA50011-100]). Left: Cell lysates from untransfected HEK293T cells; Right: Cell lysates from HEK293T cells transfected with [RC221471] using transfection reagent MegaTran 2.0 (Cat# [TT210002]).



Coomassie blue staining of purified ARMCX3 protein (Cat# [TP317732]). The protein was produced from HEK293T cells transfected with ARMCX3 cDNA clone (Cat# RC217732) using MegaTran 2.0 (Cat# [TT210002]).